



**FIREBRAND**  
BAR & RESTAURANT

**CUT OUT & BRING THIS VOUCHER  
TO ENJOY 20% OFF YOUR FOOD BILL**

VOUCHER VALID UNTIL 01/05/2016

OFFER VALID MONDAY - THURSDAY FOR ANY FOOD EATEN IN THE RESTAURANT OR TAKEAWAY. DRINKS NOT INCLUDED.  
FIREBRAND BAR & RESTAURANT IS OPEN MONDAY - SATURDAY 5PM - 11PM, WITH FOOD SERVED UNTIL 10PM.

5-7 SOUTHGATE STREET, LAUNCESTON, PL15 9DP. 01566 770722 - WWW.FIREBRANDBAR.CO.UK



**Andrew  
Hosking**

Springfield  
Tregaller Lane, Daws House  
Launceston, Cornwall  
PL15 7JH  
Tel 01566 772537/  
775818

Designer & Maker of  
Quality Furniture & Joinery

### Parish Magazine Committee

Helena Northmore (778744  
hmnorthmore@msn.com)  
Helen Masters (775545)  
Phil Parsons (777179),  
Cherry Pyke (776998),  
Sue Vernon (772640),  
Mary Stoneman (773375)  
Alison Barham (777561)  
Phil Fox (773125)

Copy for the next issue of the  
Magazine should be given to a member  
of the editorial committee not later  
than **5th July 2016**.

*(Please remember to attach your name  
and telephone number in case of  
queries.)*

## South Petherwin Parish Magazine



Issue no 73

May 2016



### **Ness's victory smile!**

Ness Elcock crossing the finishing line at the London Marathon on April 24th. She completed the gruelling 26.2 mile race in 4 hours 36 minutes and raised a massive £3622 for muscular dystrophy in the process! Ness who is a school cook at Launceston College, and lives in Petherwin Water said her son suffers from the disease and was the inspiration for her amazing fund raising. She added 'if you want to do something badly enough and are willing to put in the effort, anything is achievable. Never give up.' Well done Ness!

## Parish News

### Fatal traffic accident

On Friday 6th May at around 3.15pm there was a fatal collision on the B3254 near Pennygillam roundabout. Two vehicles were involved and the emergency services were called. The 77 year old driver in one of the cars was airlifted to Derriford hospital but pronounced dead on arrival. It is unknown at this stage whether he was a local resident. The road was closed for four hours and the Police are appealing for witnesses. Anyone who can assist is asked to contact police by email at 101@dc.police.uk or telephone on 101, quoting log number 519 of 06/05/16.

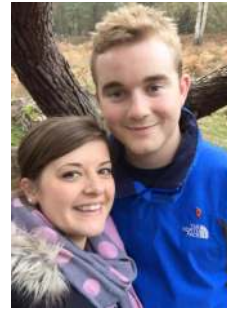
### Possible new homes for South Petherwin

On Wednesday 4<sup>th</sup> May there was a public consultation in the Sunday School room regarding plans to build 50 x 2, 3 & 4 bedded homes, on the field opposite the chapel. Each will have 2 parking spaces. The proposal was put forward by Philip Parsons, who wished to inform the village about the scheme for the land adjacent to the track to West Petherwin farm. The plans also include a public play area. Many people viewed the plans throughout the afternoon and early evening and had the opportunity to question both Phil and the architect from Trewin Design. The plans can be seen on the parish website & a survey is available for anyone to complete at:

<http://www.smartsurvey.co.uk/s/DM8FT/>

### Fire at Honiton farm

A cloud of dense dark smoke was seen over South Petherwin on Saturday 7th May resulting from a fire which quickly got out of control at Honiton Farm. Emergency services were summoned and nine crews attended with breathing apparatus, and were eventually able to bring the fire under control. Fortunately there were no injuries, but a farm building and tractor were badly damaged.



*Congratulations!*

To Katy Northmore and Sean Bailey  
On their engagement  
Much love from  
Mum, Dad, and all the familyxx



### TABLE TOP SALE

Village hall  
on Saturday 30<sup>th</sup> July  
between 10.30am - 2.30pm.

This is to raise necessary funds for the village defibrillator as there are annual ongoing costs for its upkeep.

Tables will cost £5. Phone Sue 772640 or Phil 773125 to book a table  
Come & have a cup of coffee and cake and pick up a bargain or two.



**SUMMER FAYRE**  
**At St Paternus Church**  
**On**  
**Saturday 16th July**  
**10.30 onwards**

*Tombola, books, cakes,  
bric-a-brac, phoenix cards  
and much more*

**Everyone welcome!**

### Congratulations!

Photo sent in by the proud family of Dr Sarah Stoneman. She completed the Marathon in 3hrs 50mins. Despite having run the 26.2 miles in such an amazing time she is still managing to smile. Sarah would like to thank all her sponsors for supporting her.



Dr Sarah Stoneman

If you'd like to advertise any item for sale, or celebrate a birthday or anniversary, or just shout about something special please email -hmnorthmore@msn.com or contact any of the magazine committee (details back page)



# Noticeboard

## CONCERT



7.30pm



Friday 24<sup>th</sup> June

St Paternus Parish Church

A lighthearted concert with  
Shelley Jeffery and the  
Launceston Male Voice Choir

Tickets £6 each on the door

All proceeds to the  
refurbishment of the  
village clock

Details from Nigel Parker 01566  
773233  
nigparco121@btinternet.com

★HAPPY★  
BIRTHDAY!

To  
*Shirley Russell*  
On

28th April 2016  
Love and best wishes  
from  
All at the knitting group



## Oil Syndicate

I intend to 'retire' from running the village oil  
syndicate at the end of August.  
If anyone would like to take it on please contact  
me, Sue Vernon, on 772640  
or at sue\_vernon@sky.com



*Thanks Sue for running the syndicate so well, saving us all some money.*

## A Plea for the Community Shop.....

*From Mike Ryalls*

Don't we live in a lovely village? We have a chapel, a church, a pub, a Post Office and a shop. Even some of us have now accepted the windmill! An estate agents' dream you might say.



On Saturday 30<sup>th</sup> April, in the morning, the Shop Committee held their AGM in the Church. It was nice to welcome about half a dozen of you, plus the Committee, to hear how the Shop and P.O., which you said you wanted, was doing. It turned out, as I wrote last time, that the Shop is losing money, despite the hard work of Sue and Kate and the support of the Diocese. Many suggestions were made as to how we could improve on this situation – opening at different hours, making the access better, advertising the fact that we could and do make deliveries, making it plain to **ALL** that at the moment the Shop is not financing itself. This all means, as I said last time, that the Diocesan funding will eventually run dry.

*Do you want this to happen?*

*And Sue Vernon*

It is a sad fact that unless **ALL OF US** buy from the shop regularly, **ONCE A WEEK**, (once a month won't be enough), it and the Post Office, **will close** within the next 12 months. It is not even paying its way at present, so expenses are coming out of the reserve funds, and they will not last long.

I know goods are somewhat more expensive than the supermarkets. However, I suspect nearly all of us can afford a few pence more on one or two items a week – *just in the interest of keeping the shop alive*. The milk and bread are local products, as are other items. A village that has a shop and Post Office is much more attractive to house purchasers and a something all of us may come to be thankful for as we get older and less mobile.

There are plans afoot to install a *ramp* at the entrance door, and for those who find the steps into the churchyard too difficult, there is a *parking space* at the other gate, giving level access. There is also a possibility of *changing the opening hours* to suit more people – do please let someone in the shop know if you have a preference. You can speak to Sue or Kate on 788198 – they'd very much like to hear your views. They also need more volunteers to work behind the counter and meet new people. I understand that the till is very easy to use!

By the way, do you know that there is now a **village notice board** at the shop – a good place to advertise goods and services, for a small fee. **So please, please**, make a conscious decision to pop in and buy from the shop **ONCE A WEEK, just to keep it open** for the good of the whole village.



## Parish Clerk's Notes

On May 11<sup>th</sup> the Parish Council held its Annual General Meeting. This is the time when the Chairman and Vice Chairman are elected, and members of committees and working groups are chosen. Councillor Dawn Rogers decided to stand down after a year as Chairman, and many thanks to her for all her hard work. Councillor Julie Butler was elected as the new Chairman, and Councillor Phil Parsons was re-elected as Vice Chairman.

On May 18<sup>th</sup>, the parish held its Annual Parish meeting, where groups and associations come along to share with attendees how their year has been, which projects they have worked on etc and also what the future may hold. The meeting was very well attended and it is great to have so many different clubs and societies in our community.

On the agenda was Neighbourhood Planning, and whether or not there is a wish amongst the community for this. A Neighbourhood Plan is a community-led project to have an influence in deciding where houses, shops & offices should be built, what they should look like & what infrastructure should be provided. If you would like to know more or be involved, please contact me.

You can contact me, Alison Barham on **01566 772596** or email [parishcouncil@southpetherwinpc.org](mailto:parishcouncil@southpetherwinpc.org).



**H. R. JASPER AND SON LTD**  
WHOLESALE BUTCHERS

BOTATHAN ABATTOIR  
SOUTH PETHERWIN  
LAUNCESTON  
CORNWALL PL15 7JL

**Tel: 01566 772843 (3 lines) Fax: 01566 776648**

## LOVATON BOARDING CATTERY

Feline Advisory Bureaux Listed Cattery  
Daws House, Launceston, PL15 7JF

Home from home holiday for your cats, run by a qualified Veterinary Nurse; pick up and delivery service available. Modern purpose built PVC cattery, deluxe heated penthouse chalets  
Please ring Andrea for more information on 01566 778501 or email [andrea@lovatoncattery.co.uk](mailto:andrea@lovatoncattery.co.uk) or visit [www.lovatoncattery.co.uk](http://www.lovatoncattery.co.uk)

## Adrian Davey Painting & Decorating

Exterior & Interior Painting, Wallpapering  
**Home 01566 780477 Mobile 07729500390**

NIC PARKER  
Mobile  
hairstylist



Fully Qualified  
over 20 years experience  
Competitive rates  
Ladies, Gents  
and Children



**Tel: 01566 772393**  
**Mob: 07816 183125**

36 Trelinnoe Gardens South Petherwin



Fully Insured Lady Gardener  
RHS Level 2 Certified

Do you need extra help to keep  
your garden just the way  
you like it?

Whether it's regular appointments or a particular garden project, I offer:  
Planting and care of beds, border & Containers, design and re-design  
ideas, weeding, digging and general tidying, pruning and cutting down, lawn and hedge cutting

**07968 170130**



## CASTLE VETERINARY GROUP LIMITED

Pennygillam Way, Launceston, PL15 7ED

Telephone: Farm 01566 772371; Pets 01566 772211

Website: [www.castleveterinarygroup.co.uk](http://www.castleveterinarygroup.co.uk)

Monday - Friday 8.30am - 6.30pm & Sat 8.30am - 12.30pm

24 hour in-house emergency service  Find us on Facebook

Vaccination Amnesty - Is your cat or dog overdue their booster?  
Restart their vaccinations for the price of an annual booster during May.

20<sup>th</sup> – 24<sup>th</sup> June 2016 is Rabbit Awareness Week.  
Give your rabbit a free vet check and save 15% off rabbit vaccinations.



**STONE COTTAGE ?**

**SOLID WALLS ?**

**ARE YOUR INTERNAL WALL SURFACES  
COLD / CONDENSATING?**

**CALL YOUR LOCAL EXPERTS  
FAMILY RUN BUSINESS  
30 YEARS EXPERIENCE  
FREE SURVEY / QUOTE**

**CALL CHRIS LYLE PLASTERING  
AND PROPERTY MAINTANENCE**

**OFFICE 01579 371236  
MOB 07861783082**

[www.chrislyleplastering.co.uk](http://www.chrislyleplastering.co.uk)



**SERIES  
ESTABLISHED 1856**

**Your local paper  
published  
every Thursday**

**Tindle House  
Westgate Street  
Launceston  
01566 772424**

**Also available on-line  
[www.launceston-today.co.uk](http://www.launceston-today.co.uk)**

## CORNISH WRITERS

*By Alison Barham*

Charles Causley (1917 – 2003) was born in Launceston. His father died when Causley was only fifteen years old. He went to grammar school, where getting 10 out of 10 for a sonnet was one of the early signs of his poetical talent. Later Causley became a teacher.

His work is characterised by its simplicity; his poems for adults are very similar in style to those written for children. His poetry often has deeper meanings hidden behind the simplicity. Causley often includes spiritual references, and takes inspiration from the folklore of his native Cornwall. He often wrote in ballad form. This is one of my favourites:

### I Saw A Jolly Hunter

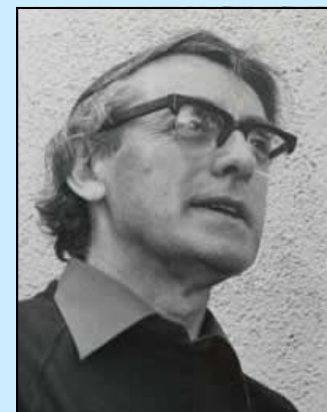
I saw a jolly hunter  
With a jolly gun  
Walking in the country  
In the jolly sun.

In the jolly meadow  
Sat a jolly hare.  
Saw the jolly hunter.  
Took jolly care.

Hunter jolly eager-  
Sight of jolly prey.  
Forgot gun pointing  
Wrong jolly way.

Jolly hunter jolly head  
Over heels gone.  
Jolly old safety catch  
Not jolly on.

Bang went the jolly gun.  
Hunter jolly dead.  
Jolly hare got clean away.  
Jolly good, I said.



Charles Causley died in 2003. His grave may be seen next to that of his mother in the cemetery by St Thomas Church. In 2006, the Charles Causley Trust bought his house in Launceston. The Charles Causley Festival, which started in 2010, will be held this year from June 3<sup>rd</sup> – 5<sup>th</sup> and will feature a series of events including readings, performances, walks, exhibitions and workshops. Contact the Launceston Tourist Information Board for more details.





## Meet the triplets!

It is probably an understatement to say that Donna and Daniel Wheadon were shocked when they learnt they were having triplets! Donna said 'We don't have a family history of multiple births and the triplets were conceived naturally'.



*From l to r ; Paige, Florence and Ebony*

The three baby girls, Ebony, Paige and Florence were born on 31<sup>st</sup> October 2015 at Exeter hospital. Two months premature, they each weighed less than 4lbs. Paige developed a heart problem and was taken to the neo natal unit at Bristol hospital while her two sisters remained in Exeter hospital. It was a worrying time for Donna and Daniel but happily all three babies were discharged in early December and the whole family moved in with Donna's parents in Boyton for three months.

The triplets are now thriving, and Donna and Daniel and the babies are back in their own home in Trelinnoe Gardens and adjusting to a new hectic routine. The couple would like to thank their families, and especially Donna's Mum, for all their help and support. With so much interest from family and friends Donna has started a facebook page called 'The Wheadon Triplets.' Donna said she and Daniel find having triplets 'a real challenge, but definitely in a good way'. We wish them every happiness.

## Village Hall News

### *To the Village Hall Committee;*

Regarding an article in the last magazine about removing the stage in the village hall, I have canvassed the skittles and table tennis groups, both of which use the hall weekly, to find out if there would be any objections. There was a positive response to the suggestion with no one objecting and only a few abstaining. There were also offers of help should the dismantling and removal go ahead. Between these two groups there is a combined membership of 36 with only 3 members in both groups.

*Peter Northmore*

The above letter was the only response received regarding the dismantling of the stage in the hall. Therefore the work will be carried out in the near future following the next committee meeting.

*Sue Vernon, Secretary*



## South Petherwin Community Shop

Opening hours: Mon - Sat 8.00 a.m. - 12.00 noon



The Shop and Post Office are located inside St Paternus church. Don't be put off by the big church door though. We offer a good range of everyday items, lots of local produce and a friendly helpful service. We can also stock other items if you would like to make suggestions for your favourite grocery items. Many people are amazed at the range of items the shop sells. Someone said "we are short of nothing that we haven't got"! Which means, I think, if you want it we either have it or can get it.

**We really need your regular custom and support  
to make the shop thrive in the Village.**

### Special Offers

**Kernow Chocolate £2.25 each – 2 for £4.00**

**Burts Crisps – various flavours 60p each 2 for £1.00**

**Cornish Tea – 40 Teabags only £1.49**

***Come to the shop to see other daily special offers!***

## Dog owners – You Are Responsible

Most people who own a dog are very responsible. You feed and exercise your dog, and you ensure it is regularly vaccinated and wormed. However, fail to clear up your dog's faeces and you could also be responsible – for causing a child to contract toxocariasis.

Toxocariasis causes serious illness and even blindness. It is caused by a parasite known as Toxocara Canis (also known as Roundworm). These parasites live in dogs' digestive systems. Eggs are released in the faeces of infected animals and contaminated soil. If someone ingests infected material, the eggs may hatch into larvae and can lead to toxocariasis.

Toxocariasis usually affects children aged between one and four years but can occur in people of all ages. Young children are most at risk because they are more likely to put things into their mouths and less likely to wash their hands properly. Symptoms of toxocariasis can include seizures, breathing difficulties, a very red and painful eye, and clouded vision, usually only in one eye. The main reason for dog fouling laws is because dog faeces are unhygienic and a health hazard. Dog fouling is unsightly, unpleasant and can lead to toxocariasis in humans. **Please, if you own a dog, be responsible, clear up after them.**

*Phil Fox*

## Gardening Matters

This is such a wonderful time of year for gardeners as the sun gains strength and the growing season really gets going. The recent cold snap has been replaced with warmer, drier days which enables us to enjoy the garden and catch up with some jobs.



### Jobs for May

- Seedlings and young plants can be hardened off to help acclimatise them to being outdoors by the end of May.
- Canna Lillies and Dahlias can be planted out in fresh compost once the danger of frost has passed.
- In drier spells, ensure newly planted trees, shrubs and perennials are watered regularly.
- Sow beans, cucumbers, squashes and courgettes, ready to be planted outside at the end of the month.
- Make regular sowings of quick crops such as lettuce, radishes, rocket and basil.
- Check the growth of climbers and perennials and tie them in and stake them as they grow to prevent damage from wind and rain.
- ‘The Chelsea Chop’ is a term given for chopping back perennials towards the end of May to delay their flowering and enabling them to flower on shorter, stronger stems with less need for staking.



Looking particularly good now is the cherry blossom, from the Prunus family. There are many varieties to suit different sites, soils and varying size of garden.

Contact me at [samnella@talktalk.net](mailto:samnella@talktalk.net)  
**Ella Charman**

## Country Code

I was recently approached by local farmer David Richards, who was in some distress. Two of his cows had aborted and were lying dead in his field. He was sure they had been worried by a dog/dogs. He would like to make it clear that people should not walk their dogs in fields with livestock, particularly when they are in calf or lamb.

**Helen Masters**

Devon and Cornwall



**Diamond**  
Home and Holiday Cleaning services

Cleaning specialists in all domestic  
and tenancy homes,  
holiday properties and businesses

tel ; Magdalena  
**07956003029**

Email: [mags19770720@wp.pl](mailto:mags19770720@wp.pl)



Specialist manufacturer of top quality sheds, stables, summer houses, garages, gates and fencing at sensible prices, made to your requirements

Lower Landlake, Launceston,  
Cornwall PL15 9LU. Tel-**01566 774791**

[www.landlakesawmills.com](http://www.landlakesawmills.com) . Email- [landlakesawmills@outlook.com](mailto:landlakesawmills@outlook.com)

## Ben Kelly Building & Carpentry



**Local, experienced and reliable tradesman taking on all aspects of residential and commercial building and carpentry.**



New builds  
Extensions  
Renovations  
Conversions  
Kitchens—supply & fit



Bathrooms—supply & fit  
Tiling  
Plastering  
Carpentry  
Landscaping & patios

**Covering Launceston, Tavistock and all surrounding areas.  
Please call me on 07890 763454 or 01566 777074 (evenings)  
to discuss your requirements.**



PVCu WINDOWS & DOORS CONSERVATORIES KITCHENS & BATHROOMS  
GLASS BALUSTRADES BUILDING SUPPLIES

Kings Hill Industrial Estate, Bude EX23 8QN [www.kjbromell.co.uk](http://www.kjbromell.co.uk) 01288 357020

- ◆ we manufacture, supply and fit double glazed PVCu windows, doors and custom designed conservatories
- ◆ we design and supply beautiful, functional kitchens, bathrooms and wet rooms to help you create your ideal home
- ◆ open up the view from your patio or balcony with glass balustrading supplied and fitted by our skilled craftsmen
- ◆ at our site in Bude we have a large building supplies shop – open to both trade and the public.

**Come and see what we have to offer!**

# Jonathan Blake

## Money Management

**Jonathan Blake lives in South Petherwin and offers personal service and access to uncomplicated independent financial advice.**

Jonathan Blake Money Management Limited  
Unit 1, Holwood Business Centre Blunts, SALTASH  
Cornwall PL12 5DW

**Tel: 01752 851748 Mobile: 07970 011651**

**E-mail: [info@jbmml.co.uk](mailto:info@jbmml.co.uk)**  
**[www.jonathanblakemoney.co.uk](http://www.jonathanblakemoney.co.uk)**

Jonathan Blake Money Management Limited is authorised and regulated by the Financial Conduct Authority.

**CHRIS LYLE**  
**PLASTERING**  
&  
**Property maintenance**  
T: 07861783082



Traditional Plastering Over 25 Years experience  
Concrete Paths/Patio Slabs  
Lime Works  
Members of Guild of Builders & Contractors  
Tyroleaning  
Damp Proof Works Friendly / Reliable  
Dry Lining  
Plastering over Artex Local Family Business  
External rendering  
Painting- Internal/External . Recommendations available  
Free Quotations/ Insurance quotes / Fully Insured

Visit for more information  
[www.chrislyleplastering.co.uk](http://www.chrislyleplastering.co.uk)  
Rezare Cottage, Rezare, Launceston, PL15 9NX  
E: [chrislyleplastering@yahoo.co.uk](mailto:chrislyleplastering@yahoo.co.uk)

**HIRST CONSTRUCTION Ltd**  
**HIRST ENVIRONMENTAL SERVICES Ltd**

**Week St Mary, Holsworthy**  
**SEPTIC TANK CLEARANCE/**  
installation of all septic/ treatment  
plants. Blockages.  
Bedding sand (bulk)-plant hire/skips  
Mini digger work/groundworks. Free  
estimates

**SEASONED WOOD LOGS**



1/2 load softwood  
only £70. **Delivered**  
**free to South**  
**Petherwin Area**

[www.hirstconstruction.co.uk](http://www.hirstconstruction.co.uk)  
**01288 341095/07836533535**

## Ruby's Garage



Car, 4x4 & Light Commercial

Sales, Service & Spares

Your local family owned independent garage for over 40 years  
Specialising in advanced vehicle technology

- Servicing and MOT facilities
- Workshop equipped with latest all makes Diagnostic Equipment
- Competitive prices on Tyres, Batteries and Clutches
- Specialist in 4x4's with wide range of spares currently in stock
- Suppliers of new and used Cars, 4x4's and Light Commercials
- Full bodyshop facilities including insurance work carried out
- Air Conditioning checks and servicing carried out

*For more information or advice, contact us by the following:*  
TEL: **01566 782402/782536** FAX: **01566 782741**  
e-mail: [brubys@aol.com](mailto:brubys@aol.com) or visit us at [www.rubysgarage.co.uk](http://www.rubysgarage.co.uk)





# Group Travel



## 2016 Excursions

26th May	River Fal cruise and candlestick ice cream farm
23rd June	Powderham Castle and River Exe Cruise
7/8th July	RHS Wisley and Hampton Court Garden Show
25th July	Seaton Tramway and Donkey Sanctuary
7th Aug	Festival of British Eventing—Gatcombe
14th Aug.	Jurassic Coast—Sea Cruise to Sidmouth
17th Aug	British Firework Championships
27/28th Aug	Great Dorset Steam Fair Weekend

16 - 70 SEAT COACHES FOR PRIVATE HIRE, CORPORATE WORK & WEDDINGS,  
(CAN INCLUDE HEN AND STAG PARTY PACKAGE) AIRPORT BUS TRANSFERS

ENTERPRISE PARK, MIDWAY ROAD, BODMIN, PL31 2FQ.

Tel: 01208 77989 /01208 72669 or Website: [www.grouptravelcoachhire.co](http://www.grouptravelcoachhire.co)

Email: [benneymoon@btinternet.co](mailto:benneymoon@btinternet.co)



BoilerCare Ltd.

South Petherwin and Daws House residents get  
a 10% service discount.

We carry out services and repairs for oil fired  
boilers and cookers in the Launceston area.

Our engineers carry spares as standard and aim  
to fix breakdowns in one visit.

Speak to us on **01566 782 789** for more information,  
or visit our website at [www.esgboilercare.co.uk](http://www.esgboilercare.co.uk)



## The first step for bright young things.

Our experienced staff develop “*warm and caring relationships with the children that foster a general sense of trust and well-being*”  
and “*help to promote the development of early communication skills and a positive attitude to learning.*” Ofsted

Monday, Tuesday, Wednesday & Thursday : 9am – 3pm

Friday : 9am – 1pm Lunch Club: 12 – 1pm

£9 half day / £18 full day

We now have places for funded two year olds.

For more information call Rachel on 01566 779476

Charity Number: 1024955



## R Mears & Sons Chimney Sweeps

Established over 30 years

Vac Brush. Full CCTV investigations.  
Pots, Cowlings & Bird Protection fitted.  
Solid Fuel Appliances, Rayburns,  
Woodburners, Stoves etc serviced.

Fully Insured.

Tel: 01840 261221

Mob: 07737 533392

[www.sweepcornwall.com](http://www.sweepcornwall.com)



# What Does South Petherwin Think?

## THE EUROPEAN UNION

Stay in? Brexit? Or just don't know yet?  
A group of residents visiting the community shop  
were asked their opinion



***Richard Whitford, Trevethy Farm***

I'm for Brexit. We need to leave the EU to get our sovereignty back. So that we have English laws for English people. I've held this view for a long time and certainly haven't been persuaded by any politicians. They all leave me cold.

***Paul Waters, Strand Farm Hse, Trecrogo***

I'd stay in. It keeps us close with Europe. I work at Lewannick school where we do 'Comenius' trips—taking our children to different countries like the Czech republic and Slovenia. It gives them an understanding of different countries and cultures and a sense of being European.



***Abi Caine, South Petherwin***

I shall vote to stay in mainly for environmental reasons. Cornwall receives millions of pounds of EU funding which provides some environmental protection. Also because the EU helps keep Europe together and prevent repetition of the disasters in the past like the disintegration of the League of Nations

## Methodist News



### **Lent Lunch**

On Friday 18th March, we held our Lent Lunch. A choice of homemade soup and rolls were served, followed by cheese and biscuits, tea and coffee, and was thoroughly enjoyed by all those who attended. As a result a donation of £90 was sent to Christian Aid

### **Prayer Meetings for the Chapel and Community**

A series of half hour prayer meetings are being held for the life of the chapel. These are being led by Rev Jo Smart. All are welcome as we pray together to discern God's will for the chapel and the community in which we have been placed. These are held on Mondays on a fortnightly basis between 6.30-7.00 pm, the dates of which are confirmed in our weekly notice sheets

### **Chapel Anniversary Service**

Our Chapel Anniversary Service was held on Sunday May 8<sup>th</sup> and led by Revd Jo Smart. She had previously invited the children from South Petherwin Primary school to look around the chapel and learn something of its history. This was then made into a project by the children and their wonderful work was displayed for all to see.



Rev Jo spoke about how the chapel had been built 145 years ago and on 25<sup>th</sup> May 1871 the foundation stone was laid. Throughout the years it has meant more than just a building, enriched by the gifts and talents of our church family and appreciated by our visitors who have met here and been welcomed for all sorts of events. Matthew Parsons played a medley of hymns old and new on his keyboard which he had arranged for the service and which was thoroughly enjoyed by all.

Revd Jo then presented certificates to Mary Stoneman and Gordon Maunder for their part in enriching the life of the chapel with their music as organists over 50 years and 60 years respectively. Mrs Valerie Hosking read a lesson which was followed by a talk from Rev'd Jo and the service concluded with prayers led by Jo and Phil Parsons.

***Mary Stoneman***





## School News

By Helen Masters



This term our whole school project is "Going for Gold" to tie in with the Rio Olympics. We are learning about Brazil and the rainforest as well as being determined and doing our best. We will be studying this topic across the curriculum.

Miss Mills bought a second hand Maypole and has been running an after school Maypole dancing club, which the children have loved and picked up very quickly. Every class also had a turn during school time.

Classes 1&2 had a fantastic, but freezing day in the snow and hail at Roadford Lake. They enjoyed pond dipping, bug hunting and leaf finding.

Up and coming events are the SATs tests for years 6 and 2. A wine and Wisdom on Saturday 25th June at the football club. Contact the school for teams. Skate Park at the school July 9th.

We learnt about the Queen and her reign for her 90th birthday. Class 2 drew some pictures of her. Don't forget to pop along to the Methodist Chapel to see the work the children have done for the Anniversary



Olivia aged 5



Chloe aged 7



Ben aged 6

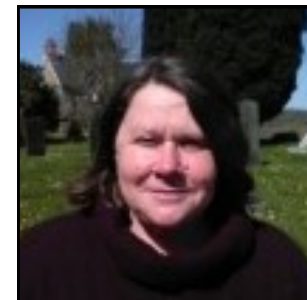


### **Bill Salt, Trelinnoe Gardens**

I'm definitely for leaving the EU. I'd like us to get control back of our country; like who comes in or out. At the moment far too much is decided in Brussels.

### **Barbara Cobbledick, Old Wit Farm**

I'm for staying in the EU. It seems to me that the EU looks after its farmers. If we leave, the subsidies could be affected.



### **Sam Payne, Tregeller close, Dawes House**

I'm undecided. Haven't made up my mind yet. But what I do know is that I want the outcome of the referendum to be fact based not decided by politics.

### **Leanne Turner, Trelinnoe Close**

I would say probably leave but I'm still undecided. I'll definitely vote but I need to find out more. I want to hear about the pro's and cons and weigh it all up.



### **Sue Vernon, Tiny Meadows**

It's so difficult to know which way to vote. No one really knows what will happen with either result because you can't see into the future. But my gut instinct tells me to vote to leave so I'll probably go with that.



## Radford Plumbing

Kitchen & Bathroom Fitting

Kitchens, Bathrooms, Wet Rooms

General Plumbing, Tiling Electrical Work,

Flooring Carpentry, Plastering



- Free Quotes
- All work to high standards and guaranteed
- We manage your project from start to finish

**Guy Radford**

01566 782 070 / 07825 611 580

[guy@radfordplumbing.co.uk](mailto:guy@radfordplumbing.co.uk)

[www.radfordplumbing.co.uk](http://www.radfordplumbing.co.uk)

Wood View, North Hill, Launceston, PL15 7PQ

## James Williams Carpentry

- Bespoke Storage Solutions, Decking
- Window & Door Replacement & Repairs
- Kitchen & Bathroom Supply and Fitting
- Doors
- Plastering
- Flooring
- Tiling



We take pride in our excellent reputation

to

please our customers through hard work, precise workmanship and good housekeeping.

Please view our website

**[www.jameswilliamscarpentry.co.uk](http://www.jameswilliamscarpentry.co.uk)**

**STARTS THEATRE**  
**SUMMER 2016**

**BOOK NOW!**  
T: 01579 362382  
W: [starts.co.uk](http://starts.co.uk)



**NEVILL HOVEY & CO LTD**  
CHARTERED ACCOUNTANTS

**Tim Smith FCA CTA**

Southgate Close, Launceston, Cornwall PL15 9DU

Telephone: (01566) 772109 Fax: (01566) 772072

Email: [tim@nevillhovey.co.uk](mailto:tim@nevillhovey.co.uk)

[www.nevillhovey.co.uk](http://www.nevillhovey.co.uk)

## Mobile Foot Care

*Sally Isaac S.A.C. Dip. FHPT/FHPP*

Gentle and professional  
foot care in the comfort  
of your own home

If you suffer discomfort from  
**corns, callus, ingrown toenails,  
cracked heels, thickened nails  
etc. or just have difficulty cutting  
your toenails** give me a ring



Telephone Sally on 07961 076 168



## LANDSCAPING & GARDENING

At Hine landscape gardening,  
we have available a team of expertise.  
We can help you realise the potential  
of whatever outdoor project  
you have in mind large or small.

Maintenance - Lawns - Trees - Clearance - Stonewalling

**07967 387748**

[www.hinegardening.co.uk](http://www.hinegardening.co.uk)  
[e:hinelandscaping@yahoo.com](mailto:e:hinelandscaping@yahoo.com)

Trecrogo Chapel House, South Pethewin, Launceston

## SERENE REIKI

Natural healing for the body and mind.

**Reiki** is an invisible, gentle energy that works by balancing  
a person's energy system, promoting the body's own natural  
ability to heal, on all levels.

**Japanese Face and Foot massage.**

**Japanese face massage** can improve the appearance of the skin.

**Japanese Foot massage** the feet are the very foundation for our physical being.

**Serene Reiki gift vouchers £25 buy your loved one a very special gift.**

**Sue Bonsor Reiki Practitioner/Teacher/Master, & Tsuboki Face & Foot  
Masseur based in Daws House, Launceston, Cornwall. Call me on 07771 976436.**

See me on [www.serenereiki.co.uk](http://www.serenereiki.co.uk) Member of the UK Reiki Federation



**Oil, Gas & LPG  
Boiler Servicing & Repair  
Plumbing & Heating  
Over 35 Years Experience**

**Tel: Launceston 880 123**

**COME VISIT OUR  
BATHROOM SHOWROOM  
AT**

**KENNARDS HOUSE**

(We are opposite Trethorne Leisure Park)

[www.dowsons-online.co.uk](http://www.dowsons-online.co.uk)



## Otho Peter

### *Prominent Launceston Architect*

Otho Peter was a prominent Launceston  
architect, responsible for buildings such as  
the Town Hall, Liberty House and Barclays  
Bank. He was also a talented watercolourist  
and Lawrence House Museum hold a collec-  
tion of paintings made by him in 1905 of  
local bridges, including Trekelland Bridge.



*Otho Peter's watercolour of St Thomas Bridge*

It is perhaps slightly ironical that the caption to this picture in the Museum  
described the bridge as 'the best preserved' bridge in East Cornwall, since we know  
how many times it has been damaged and repaired in recent years.

The Museum are showing an exhibition of the Otho Peter watercolours this sum-  
mer, but with a difference. Alongside the paintings will be photographs taken by  
members of the Launceston Camera Club of the surviving thirty-one bridges.  
These superb photographs have been taken as far as possible from the same place  
where Otho rested his easel, and will provide a new insight into the locations and  
the changes that have taken place in the past 100 years. The exhibition should be  
well worth a visit (and it's free!)

*Kaye Montgomery*

## Clock Fund Raising



We are delighted  
to be able to  
report that the  
final total raised  
by Sue Vernon  
and Barbara Cobbledick  
from their sponsored zip  
wire is £1,904.39. This  
will all go towards the  
restoration and  
mechanisation of the  
church clock. Thank you  
so much to everyone who  
very generously  
sponsored them.



## Pader Wynn





### *A letter from the Methodist Minister*



The caption for this year's 36<sup>th</sup> London Marathon was "one in a million" to celebrate the millionth runner in the event's history who would cross the finishing line. Sunday 24<sup>th</sup> April saw over 39,000 people from all different backgrounds and experiences assemble at Greenwich Park to run the 26.2 miles or 42 kilometres. They had all come for different reasons, inspired by something in their lives that had brought them to the starting line. For many it would push them beyond their limits, they would achieve things they never thought possible and that moment of crossing the finishing line would fill them with a mixture of euphoria and total exhaustion all at the same time. Of course, it is amazing what can be achieved when others believe in us and we are supported, encouraged and united in a common goal.

As Christians, we are united in a common goal, which is inspired by God's love for us as "one in a million." Like many, we know that life can push us beyond our limits as we encounter difficulties and upsets. We therefore strive to support and encourage each other and all who may be struggling by spreading God's love, hope and justice. However, we cannot do this on our own. St Paul, in his letter to Timothy, reminds us that the Lord stands with us and gives us strength. When we acknowledge this, then we are able to achieve and face things that we never thought possible.

*'I have fought the good fight, I have finished the race, I have kept the faith'*  
1 Tim 4:7

**Rev Jo Smart**

**jcsmart@me.com 01566 782240**

### **Sadly We Say Goodbye to**

**Sylvia Cheeseworth** — Sylvia was married to the late Alf Cheeseworth and spent all her married life in the village. For many years she enjoyed working at Bowden Derra, caring for others. Sylvia was very fond of Elvis Presley and his music was played at her funeral. She also loved wild flowers and telling cheeky stories, and was never happier than when chatting to people. Being interviewed by Radio Cornwall about the opening of the community shop was a real highlight for her. She was a regular at the Lunch Club since its beginning, and her wicked sense of humour will be sadly missed by all those who knew her.



## Melanie Young

### Local Chimney Sweep and Vac

Master sweep trained

Fully insured



**Tel: 01566 889006**  
**Mobile: 07773 333718**  
**swws@hotmail.co.uk**

## **David Elcock**

### **PLUMBING & HEATING**

**Tel: 01566 774249**  
**Mobile: 07977 041905**

Trevalle,  
Daws House,  
Launceston,  
Cornwall  
PL15 7JE



Our experienced dedicated equine Vets now provide a weekly half price visit on Mondays in the Launceston area. We offer a comprehensive, affordable service for all horses, big or small, from stud work to routine vaccinations. Our fully mobile digital X-ray units, scanners and dental tools allow us to bring modern Veterinary skills to your stable.

Phone 01579 382663

Follow us on Facebook for the latest offers and news

**facebook**





The Trailer Centre,  
Nr. Launceston 01566 782794

[www.prjengineering.co.uk](http://www.prjengineering.co.uk)

4 miles from Launceston on B3254  
Email: [sales@prjengineering.co.uk](mailto:sales@prjengineering.co.uk)  
Postcode: PL15 7QH

**Opening Times:**  
Mon - Fri  
8:30 - 1, 1:30 - 5  
Saturday  
9 - 12



TRAILER CENTRE

MAIN DISTRIBUTOR FOR

'BRITAIN'S LEADING  
TRAILER  
MANUFACTURER'



COVERING CORNWALL AND DEVON

**WIDE RANGE OF TRAILERS  
AVAILABLE FOR HIRE FROM £40 A DAY**



**EXTENSIVE RANGE OF SPARES IN STOCK  
COVERING MOST MAKES OF TRAILER**



**SALES \* HIRE  
SERVICE \* REPAIRS**

**FULLY EQUIPPED WORKSHOP  
FACILITIES FOR SERVICE AND REPAIRS**

**LARGE SELECTION OF CHILDREN'S  
FARMING TOYS INC. BRUDER & ROLLY TOYS**



*New unisex hair salon  
NOW OPEN!*

*Newton Farm, Lewannick,  
Launceston, PL15 7QH*

*Free parking & competitive prices*

*Call Steph on 07506741243 or email  
[steph\\_cornelius@hotmail.co.uk](mailto:steph_cornelius@hotmail.co.uk)  
to book an appointment*

**GEORGE BATEMAN**

*Property Maintenance*


*Small Building Work,*

*Interior & Exterior*

*Decorating, etc.*


*No Job too Small*

**Tel: 01566 773752**



**South Petherwin Bell ringers**

*By Nigel Parker*




The South Petherwin Band of Bell ringers have been very active recently. We have marked two special events with peals on Thursday 21<sup>st</sup> April to honour the Queen's 90<sup>th</sup> Birthday, and again on Saturday 23<sup>rd</sup> April to mark both Saint George's Day and the 400<sup>th</sup> anniversary of Shakespeare's death. On both occasions it was an 'Open Tower' and both regular ringers and visitors took part. All those in the Church said what a very happy and relaxed 'fun' ring it was and how they enjoyed particularly being able, in a small way, to express their feelings of gratitude to the Queen for all that she has done during the 62 years that she has been our Sovereign.

We have also continued to ring almost every Sunday before the 11.15 Service and hold regular practice sessions on Mondays from 7.30pm to 9.00pm to which ringers - old and new - are most welcome, regardless of whether they are experienced or just want 'to give it a try'. Also in the last few months, at our Monday evening training sessions we have had visits, advice and guidance from some experienced Ringers from other Cornish Towers. We would also like to say thank you to a group from the Truro Diocesan Guild of Ringers (affectionately known as 'The Old Codgers') who visited in February and rang a full Peal of 1250 'changes' in 44 minutes in memory of Leon Vanstone, our late Tower Captain who died last year.

**Bimbo's**

Many people have queried what this group is that is listed in the calendar of the parish magazine. Is it a toddler group or perhaps a children's club? BIMBOS stands for 'Bones In Mind Beats Osteoporosis.' It takes place in the Methodist Sunday school hall every Monday morning (except the last Mondays of each month which are Lunch Club days) at 9.30am and lasts about an hour. It is class for anyone of later years, male or female, who wants to do all they can to help keep the bone thinning disease at bay. It uses gentle resistance and balance improving exercises, together with co-ordination games, and ends with a period of relaxation.

Osteoporosis can occur in both men and women and does not itself, cause any pain – you would not know that your bones are becoming fragile until one breaks and you have a scan. If undetected it can eventually become very debilitating and cause many other problems. The right exercises plus plenty of sunshine (when available!) and a diet rich in calcium can go a long way to a more comfortable later life. Bimbos are a friendly bunch and would welcome new members – **just ring Vi Brook on 779243** and introduce yourself. There is a small charge of £1 per session to cover the cost of the hall.



## The Really Useful Page

<u>WHAT</u>	<u>WHEN</u>	<u>WHERE</u>	<u>WHO</u>
Lunch Club	Mon 27th June Mon 25th July	Methodist Hall 12.30pm	Wendy Smith 782204
Coffee morning	Sat 11th June Sat 9th July	Methodist Hall 10.30am	Tony Smith 782204
Knitting	Most Thursdays at 2pm	West Petherwin Farm	Muriel Parsons 773027
BIMBO's (over 50's keep fit)	Every Monday (except B/hols and lunch club dates)	Methodist Hall	Vi Brook 779243
Bell ringers	7.30 pm Mondays	St Paternus Church	Nigel Parker 773233
Skittles	7pm Tuesdays	Village Hall	Peter Northmore 778744 Vi Brook 779243
Bingo	Last Wednesday of the month 2pm	Village Hall	Pat Locke 774671
Table Tennis	10am Tuesday mornings	Village Hall	Sue Vernon 772640
S. Petherwin Cricket Team	Weekly practice and fixtures	S. Petherwin Cricket ground	07810 493583 07973 909556

**Community Shop  
and Post Office**  
(In St Paternus Church)



**Opening Hours-**  
**Mon - Sat 8am - 12.00**  
(Not open on Sunday)

### **Cornwall Council**

**Tel 0300 1234 100**

**Website;**  
**www.cornwall.gov.uk**

**Email ; enquiries@cornwall.gov.uk**

**Cornwall Councillor: Neil Burden**  
**01566 782286 nburden@cornwall.gov.uk**



### **Useful Information**

**The Little Red Bus** (Launceston Community Transport Partnership) covers South Petherwin area on Thursdays. For information, ring 777960

**Village Hall:** To hire hall, contact Sue Vernon 772640

**Methodist Hall** To hire hall, contact Wendy Smith 782204

**Oil Syndicate** Contact Sue Vernon 772640

### **Local Member of Parliament**

#### **SCOTT MANN (con)**

##### **Contact details;**

**Westminster**  
Scott Mann MP  
House of Commons  
London  
SW1A 0AA



**Constituency**  
Office of Scott Mann MP  
10, Market House Arcade  
Fore Street  
Bodmin  
PL31 2JA

**Telephone 01208 74337**

### **Church Services**

#### **St Paternus Church (C of E)**

Sunday worship at 11.15  
(no service on 5th Sunday of the month)

Vicar; Rev Anne Brown  
01566 770649

Church wardens ;  
Deborah Adams 7744244  
Barbara Cobbledick 772559

#### **Methodist Chapel**

Sunday Service at 11am

Minister; Rev Jo Smart 782921 (NB new number)  
Steward; Tony Smith 782204

### **Rubbish and Recycling Collection Dates**

Both rubbish and recycling are collected on a **WEDNESDAY**.

Rubbish is collected every Wednesday.

Recycling on alternate weeks.

Next recycling dates are 25th May  
8th and 22nd June and 6th and 20th July

**For more information go to-**  
**www.cornwall.gov.uk**



### **Useful Numbers**

#### **Emergencies:**

Police Ambulance Fire Brigade Coastguard  
999

Police (Non emergency-general Enquiries) 101  
Email;  
101@devonandcornwall.pnn.police.uk

Environment Agency—Emergency Hotline  
0800 807060

South West Water 0800 169 1144  
Western Power Distribution - emergency 0800  
6783105  
Crime stoppers 0800 555111

### **South Petherwin Parish Council**

The Parish Council meets on the second Wednesday each month at 7.30 pm in the village hall. It is open for anyone to come and listen in.

#### **Parish Councillors are:**

Chairman: Julie Butler  
Clerk: Alison Barham  
Tel; **772596** or email;  
**parishcouncil@southpetherwinpc.org**

#### **Councillors:**

Michael Screech, Andrew Hosking,  
Adrian Fimmimore, Roger Kneebone,  
Nik Burgess, Dawn Rogers, Phil Parsons John Whit-  
ing, Chris Powlesland