



**FIREBRAND**  
BAR & RESTAURANT

**CUT OUT & BRING THIS VOUCHER  
TO ENJOY 20% OFF YOUR FOOD BILL**

VOUCHER VALID UNTIL 01/05/2016

OFFER VALID MONDAY - THURSDAY FOR ANY FOOD EATEN IN THE RESTAURANT OR TAKEAWAY. DRINKS NOT INCLUDED.  
FIREBRAND BAR & RESTAURANT IS OPEN MONDAY - SATURDAY 5PM - 11PM, WITH FOOD SERVED UNTIL 10PM.

5 - 7 SOUTHGATE STREET, LAUNCESTON, PL15 9DP. 01566 770722 - WWW.FIREBRANDBAR.CO.UK



**Andrew  
Hosking**

Springfield  
Tregaller Lane, Daws House  
Launceston, Cornwall  
PL15 7JH  
Tel 01566 772537/  
775818

Designer & Maker of  
Quality Furniture & Joinery

### Parish Magazine Committee

Helena Northmore (778744  
hmnorthmore@msn.com)  
Helen Masters (775545)  
Phil Parsons (777179),  
Cherry Pyke (776998),  
Sue Vernon (772640),  
Mary Stoneman (773375)  
Alison Barham (777561)

Copy for the next issue of the  
Magazine should be given to a member  
of the editorial committee not later  
than **4th May 2016**.

*(Please remember to attach your name  
and telephone number in case of  
queries.)*

## South Petherwin Parish Magazine



Issue no 72

March 2016

# 100 YEARS OLD!

**Margaret having a 'whale' of a time  
celebrating her 100th birthday**



*Margaret at 23 yrs old*

Margaret Whale, nee Alford, celebrated her 100<sup>th</sup> birthday on Wednesday 9<sup>th</sup> March with family, friends and staff at Pendruccombe House in Launceston. Margaret received many cards and flowers on her special day from amongst others, Launceston Mayor Cllr Brian Hogan and the staff at Pendruccombe House. But she particularly treasured the cards received from Her Majesty The Queen and The Secretary of State.

Margaret was born at Bathpool North Hill, but on her marriage to William in 1940, went to live at Hendra farm, Altarnun. In 1942 they moved to Penfoot farm, Tregaller Lane, South Petherwin, where they farmed and brought up their family, John, Joyce and Mary.

On their retirement from the farm they moved down the road to Pentor, Tregaller Lane. William sadly died in December 1990. In September 2009 Margaret gave up her home and moved to Pendruccombe Residential Home and later when her mobility started to fail her, moved into the Nursing Home. Her daughter Mary Stoneman says she has been happy and well cared for there and particularly enjoys the good food. She still has the ability to see and hear well and also has interesting conversations about 'the good old days'





### Notes from the Parish Clerk

We have been given several useful pieces of information from services and associations recently.

Firstly, the Devon and Cornwall Police have advised that after a recent review of 'levels of engagement', a member of the neighbourhood policing team will attend an AGM or similar meeting every year. Last year they attended the Annual Parish Meeting, so we will probably keep with this arrangement.

They have also supplied us with Useful Information Sheets on how to contact them. I have put these sheets in the parish noticeboards, and they are also on the parish website. [www.southpetherwin.com](http://www.southpetherwin.com)

The Parish Council were also sent some information from the Fire Service about a free home fire safety check. One of the councillors tried out this service and was very impressed with this efficient (and free!) service. The number to contact is: 0800 3581 999.

Finally, in case you spot any new potholes in your neighbourhood, you can report them using this email address: [handee@cormacltd.co.uk](mailto:handee@cormacltd.co.uk).

**You can contact me on 01566 772596  
or email [parishcouncil@southpetherwinpc.org](mailto:parishcouncil@southpetherwinpc.org).**

*Alison Barham, Parish Clerk*


### A personal message from Revd Canon Anne Brown

It was with sadness that on Sunday 7<sup>th</sup> February I announced that I would be leaving the Three Rivers Team which includes South Petherwin Church. I have loved my time here, but feel that I am called to continue God's work in another area. I will not be leaving until September but know that this time will go quickly

Thank you to all of you who have made Chris and I so welcome and supported our ministry.

*More details of events to mark Anne's leaving at a later date. She will be greatly missed by many in the Parish*



**GO FOR IT !**  
  
**Good Luck to  
Dr Sarah Stoneman**  
  
**who is running  
in the London Marathon  
on 24th April**  
  
**in aid of the Charity  
RNIB.**  
  
**Love Mum xxx**

### **South Petherwin Chapel Anniversary Celebrations**

**Sunday 8<sup>th</sup> May at 3.00pm**

**To be led by our Minister  
Rev Jo Smart.**

**Followed by a cream tea**

*All welcome.*

**CONCERT**  
**7.00pm**  
**Friday 24th June**  
**St Paternus Parish Church**



**A joint 'fun' concert with  
Shelley Jeffery and the  
Launceston Male Voice choir**

**All proceeds to the refurbishment of the  
Church clock**

**Details from Nigel Parker  
tel; 01566 773233  
[nigparco121@btinternet.com](mailto:nigparco121@btinternet.com)**



If you'd like to advertise any item for sale, or celebrate a birthday or anniversary, or just shout about something special please email [hmnorthmore@msn.com](mailto:hmnorthmore@msn.com) or contact any of the magazine committee (details back page)



# Noticeboard

## Knitted Daffodils!



**Lewannick Church will be decorated  
with knitted daffodils from**

**Saturday 26th March**

**Come and see the amazing work of  
the great knitters of Lewannick and  
further afield**

Any money raised will be shared  
between Marie Curie cancer care and  
the Church.

## Launceston Then!

Launceston Then!  
is a website full of  
interesting  
photo's facts and  
nostalgia  
about Launceston.

**Go to [www.launcestonthen.co.uk](http://www.launcestonthen.co.uk)**

## Happy Easter !

**Sunday  
27th March**



## DON'T FORGET!

**To change your clock**

**Clocks go forward one hour on  
Saturday 26th March**



## LAMBING SEASON

**PLEASE WALK YOUR DOG RESPONSIBLY**

Keep to footpaths

Keep dogs on leads



## South Petherwin Community Fund

A few months ago we wrote in the magazine that there had been several successful applications for grants to the South Petherwin Community Fund. These were from groups and individuals all of whom add something to the well-being and/or profile of South Petherwin.

We want to build on the success so far and are continually looking for new beneficiaries that fulfil the application criteria. The application form is very easy to complete and applications are considered by people who live or work within the parish. A few organisations have had more than one allocation of funds and the benefits can already be felt within the community and specifically the groups themselves. Others are still awaiting answers or funding from other sources in order to complete projects.

- \* All decisions on funding made by the trustees.
- \* Non profit making and no third party involved.
- \* Confidentiality valued and no personal details required.
- \* Accounts audited by the Parish Council and Cornwall County Council.
- \* The fund cannot be used for normal living expenses.
- \* We do not fund political or religious organisations.

We would also like others to get involved in the administration of the fund. At present there are six and we would welcome the involvement of others from within the community. Unless an individual interest is declared in an application all committee members carry equal weight in discussions on allocation of funds. There are four meetings a year and each takes about an hour. Committee members are generally only asked to make decisions on funding. There is no additional work.

## New funds available

The committee is meeting in May and applications should be submitted by Friday 6th May. Applications can be by post or email. If by email, a signed application form must be received by the committee before funds are released. Applicants will also be required to demonstrate appropriate use of the funds.

## Moving the stage in the village hall

It has been suggested that the stage in the village hall could be removed in order to make more room for activities in the hall. A decent sized cupboard could then be built into one corner near the kitchen door, for storage of items that are currently under the stage. This would also make the toilet more easily accessible. The village hall committee would like to hear the views of everyone on this subject.

Please be kind enough to ring Sue or Peter Vernon (secretary & chairman) on 772640 or e-mail to [sue\\_vernon@sky.com](mailto:sue_vernon@sky.com) and let them know what you think.





## South Petherwin Community Shop



**Opening hours:**  
**Monday to Sat 8.00 a.m. - 12.00 noon**

The Shop and Post Office are located inside St Paternus church. Don't be put off by the big church door though, We offer a good range of everyday items, lots of local produce and a friendly helpful service. We can also stock other items if you would like to make suggestions for your favourite grocery items.

### **SPECIAL PROMOTIONS**

Don't miss out on our special promotions – keep an eye out for Special Offers and take a look in the shop for other discounted products and deals.

**All served with a smile and a helping hand**



## **COMMUNITY SHOP** **Open Day and AGM**

**Saturday 30<sup>th</sup> April**

South Petherwin Church

AGM at 11 am

Refreshments

Come and hear how the project is going,  
Sign up to volunteer in the shop, or buy some shares

**Come along and support Your Shop!**

### **VOLUNTEERS NEEDED**

Do you have a couple of hours a week to spare to join the merry band who happily keep the shop going.? If so please call into the shop or ring **Sue or Kate on 01566 788198**.

## **LOVATON BOARDING CATTERY**

Feline Advisory Bureaux Listed Cattery

Daws House, Launceston, PL15 7JF

Home from home holiday for your cats, run by a qualified  
Veterinary Nurse; pick up and delivery service available.

Modern purpose built PVC cattery, deluxe heated penthouse chalets

*Please ring Andrea for more information on 01566 778501 or email  
[andrea@lovatoncattery.co.uk](mailto:andrea@lovatoncattery.co.uk) or visit [www.lovatoncattery.co.uk](http://www.lovatoncattery.co.uk)*

## **Adrian Davey** **Painting & Decorating**

Exterior & Interior Painting, Wallpapering

**Home 01566 780477 Mobile 07729500390**



Fully Qualified  
over 20 years experience  
Competitive rates  
Ladies, Gents  
and Children



**Tel; 01566 772393**  
**Mob; 07816 183125**

**36 Trelinnoe Gardens South Petherwin**



Fully Insured Lady Gardener  
RHS Level 2 Certified

**Do you need extra help to keep  
your garden just the way  
you like it?**

Whether it's regular appointments or a  
particular garden project, I offer:  
Planting and care of beds, border &  
Containers, design and re-design  
ideas, weeding, digging and general tidying,  
pruning and cutting down, lawn and hedge  
cutting

**07968 170130**



## CASTLE VETERINARY GROUP LIMITED

Pennygillam Way, Launceston, PL15 7ED

Telephone: Farm 01566 772371; Pets 01566 772211

Website: [www.castleveterinarygroup.co.uk](http://www.castleveterinarygroup.co.uk)

Monday - Friday 8.30am - 6.30pm & Sat 8.30am - 12.30pm

24 hour in-house emergency service  Find us on Facebook

**Your dog must be microchipped and registered  
by 6<sup>th</sup> April to comply with the law.**

Please contact the surgery to arrange an appointment or  
come to our £10 special offer drop-in clinics on  
Wednesdays 16<sup>th</sup>, 23<sup>rd</sup> and 30<sup>th</sup> March

## A Community Shop plea....

*We Use it or we lose it.....*



Recently, Valda and I along with the other Community Shop Volunteers enjoyed a very pleasant lunch at Trethorne Golf Club. The Managers, Sue and Kate, wanted to show a little appreciation for what we have done over the last few months. Thank you both for the thought.

However, I feel that I have to point out that at present the outgoings are more than the income at the Shop and Post Office. When the Community Shop Project was first mooted some time ago by our friendly Canon, Anne, bless her, a questionnaire was filled in by many. This suggested that such a Shop would be supported by the village.

Consequently the Canon went ahead and made a case for the Diocese to fund such a Project. I might say the Diocese has been very generous but the funds are not inexhaustible and the time has come to draw your attention to this fact. The Shop and Post Office are not about to close. But unless it gathers more support from the Village it will.

*Mike Ryalls*



**STONE COTTAGE ?**

**SOLID WALLS ?**

**ARE YOUR INTERNAL WALL SURFACES  
COLD / CONDENSATING?**

CALL YOUR LOCAL EXPERTS  
FAMILY RUN BUSINESS  
30 YEARS EXPERIENCE  
FREE SURVEY / QUOTE

**CALL CHRIS LYLE PLASTERING  
AND PROPERTY MAINTANENCE**

OFFICE 01579 371236  
MOB 07861783082

[www.chrislyleplastering.co.uk](http://www.chrislyleplastering.co.uk)



**Your local paper  
published  
every Thursday**

**Tindle House  
Westgate Street  
Launceston  
01566 772424**

Also available on-line  
[www.launceston-today.co.uk](http://www.launceston-today.co.uk)



**H. R. JASPER AND SON LTD**  
*WHOLESALE BUTCHERS*

**BOTATHAN ABATTOIR  
SOUTH PETHERWIN  
LAUNCESTON  
CORNWALL PL15 7JL**

**Tel: 01566 772843 (3 lines) Fax: 01566 776648**



## Zip-a-di-dooda!

Saturday 27th February dawned cold but thankfully dry. As I lay in my warm bed, I wondered again why on earth I had thought going on the zip wire at the Eden project would be a great way to raise funds for the restoration of the church clock. It had seemed a brilliant idea some weeks ago and now just seemed scary. Was it too late to back out ? Sadly yes. Get a grip Sue, I told myself.



Barbara Cobbledick, Jane Groome (who came for fun!) and I arrived at the Eden Project and were buckled into our harnesses, given our goggles and crash helmets, and together with a couple of rather nice young men, were taken by minibus to the starting point for the zip wire. This in itself was interesting as you are taken up above the domes past working parts of Eden not normally seen. After some brief instructions about what to expect, we climbed the steps to the launch platform, some 97m high (about 300ft for the more mature of us). Terrifying doesn't begin to describe it.

Barbara bravely went first, so I was able to see how the harness worked. I was somewhat heartened to find that the two strapping young chaps were also noticeably nervous! Three straps are hooked onto the trolley that rides the cable, and another is attached separately to the cable, keeping your legs on the horizontal. Once you are hooked up you have to put both hands down on the platform and put your feet on the bar behind you, straightening your legs. So far, so good. By this time you are horizontal with your chin over the edge of the platform, looking into the valley, and feeling as if you are tilting head first down (you're not). Then.... your lovely instructor says 'take your hands off the floor and put them along your sides'. *I don't think I've ever felt so insecure!* However, after allowing the harness to take the weight of my body, I managed to do it; but gazing down on the abyss, I had to give myself a good talking to – if everyone else can do it Sue, so can you.



Then I was off, and after a few moments I settled down to try and enjoy it. There was a certain amount of wind up there and at one point it turned me sideways for a few seconds, which was alarming. As you come to the end of the 660m (720 yd) cable, the ground slopes up quite quickly towards the instructor, who catches you and helps you out of all the paraphernalia.

## Papillon Fund

The Cornwall Community Foundation (CCF) is welcoming applications to the Papillon Fund for the benefit of the local community. We award small grants to grassroots, front line, volunteer led organisations who are making a positive impact in their area.



The Papillon Fund supports community projects, within the parishes of St Thomas and South Petherwin. Out of area applications may be considered on the condition the beneficiaries attending the project reside within the listed Parishes (evidence of this will be required). Grants range from £250 to £1,000, larger sums can be awarded in exceptional circumstances. First time applicants will take priority.

Application forms and grant guidelines, including full eligibility, are available to download from our website [www.cornwallfoundation.com](http://www.cornwallfoundation.com), or contact the office on 01566779333 for further information.

**The application deadline date is 18<sup>th</sup> April 2016.**

## Vanessa Elcock keeps on running

In our November issue Vanessa Elcock, who lives in Petherwin Water, talked about training to run the London marathon in April 2016 in aid of muscular dystrophy. Vanessa's eldest son Tristan has FSH muscular dystrophy, a cruel muscle wasting disease for which at present, there is no cure.



Vanessa set herself a target of raising £1600. She has already smashed this and is now well on her way to raising £2,500. The London Marathon is on 24th April 2016. If you would like to support Vanessa go to [www.justgiving.com/vanessa-Elcock](http://www.justgiving.com/vanessa-Elcock)

## MCC Annual Lands End Trial

Britains oldest sporting club for motorcycles and cars, The MCC, will be holding their 94th annual Lands End Trial between 25th-26th March. One of the observed routes will use the old county road at South Petherwin otherwise known as 'Petherwin Old Hill'. The classes of vehicles include pre war, vintage, elderly or novice entrants.

Starting on Saturday 26th March at 10.15am local residents are welcome to watch the fun as cars scramble up 'old Hill'.



## A letter from Anne and Les Richardson

How lovely to open the January Parish Magazine, and have such warm good wishes from everyone, for our return home to the village. We are not quite up to the antics of the two figures illustrated, but hopefully getting there.

For those of you who don't know, our car was struck from behind on the A30 by a large lorry. We are so grateful to the rescue services on that night, and to the staff at Derriford hospital. Thank you again for the friendship of the Parish.

*Anne and Les Richardson  
Daws House*

## No-churn ice cream

Serves 8

- ½ a 397g can sweetened condensed milk
- 600ml pot double cream
- 1 tsp vanilla extract.

### **Method**

1. Put the condensed milk, cream and vanilla into a large bowl. Beat with an electric whisk until thick and quite stiff, a bit like clotted cream. Scrape into a freezer container or a large loaf tin, cover with cling film and freeze until solid.

Recipe from Good Food magazine, August 2010



Wow! I'd done it **and** I'd kept my eyes open! Would I do it again? Yes, if I had good reason and would maybe enjoy it more, being prepared for what to expect. But for fun?? No!

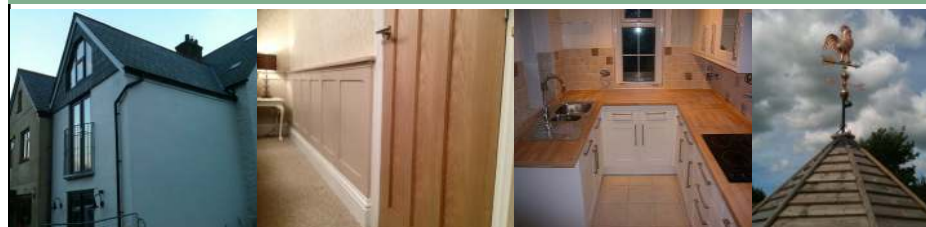
Both Barbara and I would like to thank everyone who has generously sponsored us. There is more money to collect now that the deed is done, so we will let you know, in the next edition, how much we (and you) have raised towards the refurbishment and automation of the village clock. I knocked on lots of doors only to find that people were out, so if anyone I missed would like to contribute to this village project, I'd be very happy to come and collect your contribution. There is also a bucket in the shop for donations.

*Sue Vernon - 772640*



*L to R—Barbara, Jane and Sue*

## **Ben Kelly Building & Carpentry**



**Local, experienced and reliable tradesman taking on all aspects of residential and commercial building and carpentry.**

- |                         |                          |
|-------------------------|--------------------------|
| ➤ New builds            | ➤ Bathrooms—supply & fit |
| ➤ Extensions            | ➤ Tiling                 |
| ➤ Renovations           | ➤ Plastering             |
| ➤ Conversions           | ➤ Carpentry              |
| ➤ Kitchens—supply & fit | ➤ Landscaping & patios   |

**Covering Launceston, Tavistock and all surrounding areas.  
Please call me on 07890 763454 or 01566 777074 (evenings)**



PVCu WINDOWS & DOORS CONSERVATORIES KITCHENS & BATHROOMS  
GLASS BALUSTRADES BUILDING SUPPLIES

Kings Hill Industrial Estate, Bude EX23 8QN [www.kjbromell.co.uk](http://www.kjbromell.co.uk) 01288 357020

- ◆ we manufacture, supply and fit double glazed PVCu windows, doors and custom designed conservatories
- ◆ we design and supply beautiful, functional kitchens, bathrooms and wet rooms to help you create your ideal home
- ◆ open up the view from your patio or balcony with glass balustrading supplied and fitted by our skilled craftsmen
- ◆ at our site in Bude we have a large building supplies shop – open to both trade and the public.

**Come and see what we have to offer!**

# Jonathan Blake

## Money Management

**Jonathan Blake lives in South Petherwin and offers personal service and access to uncomplicated independent financial advice.**

Jonathan Blake Money Management Limited  
Unit 1, Holwood Business Centre Blunts, SALTASH  
Cornwall PL12 5DW

**Tel: 01752 851748 Mobile: 07970 011651**

**E-mail: [info@jbmml.co.uk](mailto:info@jbmml.co.uk)**  
**[www.jonathanblakemoney.co.uk](http://www.jonathanblakemoney.co.uk)**

Jonathan Blake Money Management Limited is authorised and regulated by the Financial Conduct Authority.

**CHRIS LYLE**  
**PLASTERING**  
&  
**Property maintenance**  
T: 07861783082



Traditional Plastering Over 25 Years experience  
Concrete Paths/Patio Slabs  
Lime Works  
Members of Guild of Builders & Contractors  
Tyroleaning  
Damp Proof Works Friendly / Reliable  
Dry Lining  
Plastering over Artex Local Family Business  
External rendering  
Painting- Internal/External . Recommendations available  
Free Quotations/ Insurance quotes / Fully Insured

Visit for more information  
[www.chrislyleplastering.co.uk](http://www.chrislyleplastering.co.uk)  
Rezare Cottage, Rezare, Launceston, PL15 9NX  
E: [chrislyleplastering@yahoo.co.uk](mailto:chrislyleplastering@yahoo.co.uk)

**HIRST CONSTRUCTION Ltd**  
**HIRST ENVIRONMENTAL SERVICES Ltd**

**Week St Mary, Holsworthy**  
**SEPTIC TANK CLEARANCE/**  
installation of all septic/ treatment  
plants. Blockages.  
Bedding sand (bulk)-plant hire/skips  
Mini digger work/groundworks. Free  
estimates

**SEASONED WOOD LOGS**



1/2 load softwood  
only £70. **Delivered**  
**free to South**  
**Petherwin Area**

[www.hirstconstruction.co.uk](http://www.hirstconstruction.co.uk)  
**01288 341095/07836533535**

## Ruby's Garage



Car, 4x4 & Light Commercial

Sales, Service & Spares

Your local family owned independent garage for over 40 years  
Specialising in advanced vehicle technology

- Servicing and MOT facilities
- Workshop equipped with latest all makes Diagnostic Equipment
- Competitive prices on Tyres, Batteries and Clutches
- Specialist in 4x4's with wide range of spares currently in stock
- Suppliers of new and used Cars, 4x4's and Light Commercial
- Full bodyshop facilities including insurance work carried out
- Air Conditioning checks and servicing carried out

*For more information or advice, contact us by the following:*  
TEL: **01566 782402/782536** FAX: **01566 782741**  
e-mail: [brubys@aol.com](mailto:brubys@aol.com) or visit us at [www.rubysgarage.co.uk](http://www.rubysgarage.co.uk)





# Group Travel



## 2016 Excursions

1 <sup>st</sup> – 7 <sup>th</sup> APR - LAKES, DALES & MOORS	7 <sup>th</sup> / 8 <sup>th</sup> JUL – WISLEY & HAMPTON CT
26 <sup>th</sup> APR – GREENWAY HOUSE	7 <sup>th</sup> AUG – GATCOMBE FESTIVAL
7 <sup>th</sup> MAY - MALVERN SPRING SHOW	14 <sup>th</sup> AUG - SEA CRUISE TO SIDMOUTH
7 <sup>th</sup> MAY - BADMINTON TRIALS	2 <sup>nd</sup> – 4 <sup>th</sup> SEP - BURGHLEY TRIALS
26 <sup>th</sup> MAY - RIVER FAL CRUISE	3 <sup>rd</sup> – 4 <sup>th</sup> SEP - GT DORSET STEAM FAIR
23 <sup>rd</sup> JUNE - POWDERHAM CASTLE	13 <sup>th</sup> SEP - WIDECOMBE FAIR

**FUTURE** – HOYS (OCT), SEATON TRAMWAY, AUTUMN TOUR, TURKEY & TINSEL

16 - 70 SEAT COACHES FOR PRIVATE HIRE, CORPORATE WORK & WEDDINGS

**ENTERPRISE PARK, MIDWAY ROAD, BODMIN, PL31 2FQ. Tel: 01208 77989 / 01208 72669 or Website: [www.grouptravelcoachhire.co](http://www.grouptravelcoachhire.co) Email: [benneymoon@btinternet.co](mailto:benneymoon@btinternet.co)**



**The first step for bright young things.**  
Our experienced staff develop “*warm and caring relationships with the children that foster a general sense of trust and well-being*” and “*help to promote the development of early communication skills and a positive attitude to learning.*” Ofsted

Monday, Tuesday, Wednesday & Thursday : 9am – 3pm  
Friday : 9am – 1pm Lunch Club: 12 – 1pm  
£9 half day / £18 full day

We now have places for funded two year olds.  
For more information call Rachel on 01566 779476  
Charity Number: 1024955



**Boiler**care Ltd.

**South Petherwin and Daws House residents get a 10% service discount.**

We carry out services and repairs for oil fired boilers and cookers in the Launceston area.

Our engineers carry spares as standard and aim to fix breakdowns in one visit.

Speak to us on **01566 782 789** for more information, or visit our website at [www.esgboilercare.co.uk](http://www.esgboilercare.co.uk)



## R Mears & Sons Chimney Sweeps

Established over 30 years

Vac Brush. Full CCTV investigations.  
Pots, Cowlings & Bird Protection fitted.  
Solid Fuel Appliances, Rayburns,  
Woodburners, Stoves etc serviced.

Fully Insured.

Tel: 01840 261221  
Mob: 07737 533392  
[www.sweepcornwall.com](http://www.sweepcornwall.com)



## ELF CAPS

*Two colourful fungi to look out for at this time of year*

In the winter and early spring, before all the wealth of spring wild flowers bursts upon us, there are still colourful wild plants to be seen locally.

In woods around the area it is quite common to find the very pretty little fungus known as the scarlet elf cap or elf cup. It is usually found growing on decaying branches in damp woodland, often among leaf litter, and its bright red colour catches the eye against the brown of the wood and surrounding green moss, ivy and other undergrowth. Its tiny very delicate appearance gives a clue to its common name associating it with elves and fairies. Its botanical name is *Sarcoscypha coccinea*.

There is another similar fungus to be found in our local woods. It does not stand out so much as the scarlet elf cap and is a little more difficult to spot. This is the green elf cup fungus, botanical name *Chlorociboria aeruginascen*. Although it can produce a fruiting body similar in shape to the scarlet elf cap, its more common manifestation is something that looks like a greenish stain on rotting logs, especially oak.



*Stain caused by mycelium of Green Elf Cup*



*Fruiting bodies of the Scarlet Elf Cap*

Have a look and see if you can find these two pretty fungi, before we are overwhelmed by the flood of wood anemones, bluebells and other woodland plants that we are lucky enough to enjoy in spring.

*Kaye Montgomery*



## Cornish Writers

### **Winston Graham**

*By Alison Barham*

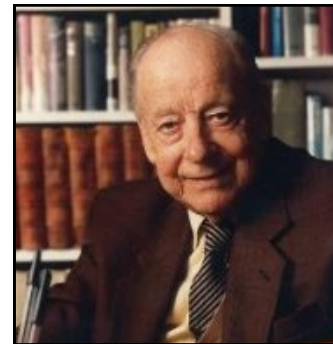
**Winston Graham** was born in Manchester in 1908, however he moved to Perranporth with his parents when he was 17 and started writing from a young age. He is best known for his Poldark novels set in Cornwall at the end of the 18th and beginning of the 19th centuries, which were made into a hugely popular television series during the '70's and were successfully reprised in 2015 (with the long-awaited second series still to come to our TV screens), although these books were only a small proportion of his overall work.



*Aidan Turner in the TV production of Pol-*

In addition to their romantic power, the Poldark novels depict with great accuracy the fluctuating fortunes of mining and the conditions of the time in the countryside and in the fishing communities. During the war years Graham served in the Auxiliary Coastguard Service in Cornwall and spent many long quiet hours alone on watch. This must have helped him when writing his acute observations of the sea, as shown in this extract from one of the later Poldark novels:

"Today waves were hitting the rocks below Wheal Leisure with such weight that they generated a new surf running at right angles to the flow of the sea with geysers of water spouting high from the collisions. A new and irrational surf broke against the gentler rocks below the Long Field. Mountains of spume collected wherever the sea drew breath and then blew like bursting shells across the land. The sea was so high there was no horizon and the clouds so low that they sagged into the sea."



*Winston Graham*

Winston Graham died in 2003 and in 2008, to celebrate the centenary of his birth and his long connection with Cornwall, the Royal Cornwall Museum set up an Exhibition: *Poldark's Cornwall: the life and works of Winston Graham*. In 2015 the book *Poldark's Cornwall* was republished. This is a semi-autobiographical book with beautiful photos of the Cornish sea and landscape. In it he also describes what inspired him to write the Poldark novels and how the first television series came to be made.



## Gardening Matters

March is here, and so far this year, gardening weather days have been very few and far between. Hopefully, now as the days get longer, the weather will allow us to get out in the garden and here are some of the jobs for this time of year.



### Jobs in Spring

- Cut back and clear old growth and leaf litter from perennials to make way for the new shoots to emerge.
- Clumps of snowdrops can be dug up and divided and replanted to enjoy next year. The best time to do this is after flowering whilst the stems are still green.
- Now is a good time to move and plant new perennials and shrubs and to divide and split perennials that have a habit of spreading and becoming too invasive.
- Prune summer flowering shrubs such as Hydrangeas, roses, fuchsias and buddleia.
- As roses are pruned, remove all dead and diseased leaf material from round the base of the plant and apply a fresh mulch of compost. This helps to prevent black spot.
- As Hostas start to shoot from the crown, sprinkle a layer of horticultural grit and slug pellets round the base to keep slug damage at bay when in full leaf.
- Use fleece or cloches to heat up the ground ready for sowing and to give early sowings greater protection from wind and rain.

Looking at their best now are Hellebores, with their elegant flowers which brighten up the winter garden.



contact me at [samnella@talktalk.net](mailto:samnella@talktalk.net)

*Ella Charman*

## Sadly we say good bye to ;

**Margaret Stenlake** of Jackmar, Tregaller Lane, who sadly passed away on 14th January 2016. Following their marriage, Margaret and her husband John (known as Jack Stenlake) came to live in their newly built bungalow in Tregaller Lane, some sixty years ago. Margaret was a very private, home loving person. Her late husband Jack ran a Plant Hire and Digger machinery business and was well known in the area. Margaret was buried at chapel in a private graveside service.



.....  
**Robert Storey.** Bob sadly passed peacefully away on 5th February 2016. He and his wife Margaret moved to South Petherwin almost 29 years ago and have been very happy here. A very keen gardener, Bob could always be seen in the garden of their bungalow in Trelinnoe Close.



Bob was one of the few surviving veterans of the WW11 Russian Convoys, for which he was awarded the Arctic Star by the British government. Over 70 years ago these Arctic Convoy veterans took part in what Winston Churchill called 'the worst journey in the world'. In November 2014, at County Hall in Truro, the Russian Ambassador presented him with the Ushakov Medal in recognition and with the thanks of the Russian government.

.....  
**Ralph Taylor.** We are sorry to report the death of Ralph Taylor, who lived with Bernard and Barbara Wadland for almost 40 years, many of them spent in South Petherwin. A North Yorkshire man by birth, he was a keen fisherman, and loved to go sea fishing for mackerel. He would often smoke the fish in a small home smoker, before giving them away to friends. He was also fond of photography and could often be seen cycling down the lanes with his camera on his back, looking for likely subjects. Many may also remember his three wheeler car that he used to drive before failing health prevented him from doing so. He will be missed.



## Radford Plumbing

Kitchen & Bathroom Fitting

Kitchens, Bathrooms, Wet Rooms

General Plumbing, Tiling Electrical Work,

Flooring Carpentry, Plastering



- Free Quotes
- All work to high standards and guaranteed
- We manage your project from start to finish

**Guy Radford**

**01566 782 070 / 07825 611 580**

[guy@radfordplumbing.co.uk](mailto:guy@radfordplumbing.co.uk)

[www.radfordplumbing.co.uk](http://www.radfordplumbing.co.uk)

Wood View, North Hill, Launceston, PL15 7PQ

## Neighbourhood Watch Scheme

A Neighbourhood Watch Scheme enables communities to work together with the police and limit the opportunity for crime and anti social behaviour through increased awareness of crime prevention measures.

Your Local Neighbourhood Watch team co-ordinators are:

The Village	Helen Masters 775545
Tiny Meadows	Richard Beacham 773614
Tregaller Lane & Tremeale	Mary Stoneman 773375 and Crispin Earle 774038
Daws House	Andrea Foster 779181
School Watch	Gillian Sleep 773300

If you are interested in joining please contact one of the above.

### Police Contact Details

For all emergencies—999

For non emergencies and general enquiries –101

Or email; [101@devonandcornwall.pnn.police.uk](mailto:101@devonandcornwall.pnn.police.uk)

## James Williams Carpentry

- Bespoke Storage Solutions, Decking
- Window & Door Replacement & Repairs
- Kitchen & Bathroom Supply and Fitting
- Doors
- Plastering
- Flooring
- Tiling



We take pride in our excellent reputation

to

please our customers through hard work, precise workmanship and good housekeeping.

Please view our website

**[www.jameswilliamscarpentry.co.uk](http://www.jameswilliamscarpentry.co.uk)**



**NEVILL HOVEY & CO LTD**  
CHARTERED ACCOUNTANTS

**Tim Smith FCA CTA**

Southgate Close, Launceston, Cornwall PL15 9DU

Telephone: (01566) 772109 Fax: (01566) 772072

Email: [tim@nevillhovey.co.uk](mailto:tim@nevillhovey.co.uk)

**[www.nevillhovey.co.uk](http://www.nevillhovey.co.uk)**

## Mobile Foot Care

*Sally Isaac S.A.C. Dip. FHPT/FHPP*

**Gentle and professional  
foot care in the comfort  
of your own home**

*If you suffer discomfort from  
corns, callus, ingrown toenails,  
cracked heels, thickened nails  
etc. or just have difficulty cutting  
your toenails give me a ring*



**Telephone Sally on 07961 076 168**



## LANDSCAPING & GARDENING

At Hine landscape gardening,  
we have available a team of expertise.  
We can help you realise the potential  
of whatever outdoor project  
you have in mind large or small.

Maintenance - Lawns - Trees - Clearance - Stonewalling

**07967 387748**

[www.hinegardening.co.uk](http://www.hinegardening.co.uk)  
e:hinelandscaping@yahoo.com

Trecrogo Chapel House, South Pethewin, Launceston

## SERENE REIKI

Natural healing for the body and mind.

**Reiki** is an invisible, gentle energy that works by balancing  
a person's energy system, promoting the body's own natural  
ability to heal, on all levels.

**Japanese Face and Foot massage.**

**Japanese face massage** can improve the appearance of the skin.

**Japanese Foot massage** the feet are the very foundation for our physical being.

**Serene Reiki gift vouchers £25 buy your loved one a very special gift.**

**Sue Bonsor Reiki Practitioner/Teacher/Master, & Tsuboki Face & Foot  
Masseur based in Daws House, Launceston, Cornwall. Call me on 07771 976436.**

See me on [www.serenereiki.co.uk](http://www.serenereiki.co.uk) Member of the UK Reiki Federation



## A Timely Comment and Second Hand Information

*By Nigel Parker*



What possible connection could there be  
between the magnificent Canadian Parlia-  
ment building in the Capital Ottawa, and  
South Petherwin Church Clock ? A little ob-  
scure, but a connection there is !

Last September I was fortunate enough to be  
one of the 80 choristers from 18 Cornish Male  
Choirs who held five 'Sell-Out' concerts over  
14 days in Eastern Canada. The party of over  
200 toured from Niagara in the West to Que-  
bec in the East and one of the concert loca-  
tions was Ottawa where the Canadian Parlia-  
ment resides – almost a replica of our own  
Houses of Parliament. We were all invited to

view the buildings and the famous clocktower  
that replicates 'Big Ben'. It was a great sur-  
prise to discover that the famous clock itself  
had been made by the same clockmaking firm  
as our own village clock – Gillett and Johnson  
of Croydon and that the workings were the  
same design as ours. The Ottawa clock may  
have been more splendid – with a full set of  
Westminster chimes and a 32 bell Carillon ( it  
certainly cost a lot more than our own ! ) and  
had been installed some six years after ours  
in 1921, but the movement and mechanisms  
identical – and of course it does not have to  
be wound by hand.

Which is why we are now trying to raise  
enough money to renovate our own two clock  
faces and 'electrify' the tedious twice weekly  
winding process by our stalwart 'gang' of  
volunteers. Any and all donations will be re-  
ceived most gratefully by Mike Ryalls.

*Details of a concert in aid of the Church Clock  
refurbishment fund on page 31*



**Oil, Gas & LPG  
Boiler Servicing & Repair  
Plumbing & Heating  
Over 35 Years Experience**

**Tel: Launceston 880 123**

**COME VISIT OUR  
BATHROOM SHOWROOM  
AT  
KENNARDS HOUSE**

(We are opposite Trethorne Leisure Park)

[www.dowsons-online.co.uk](http://www.dowsons-online.co.uk)



## Pader wynn

*By Roger Ryle*





## School News

By Helen Masters



This half term our studies of the Polar regions got off to an excellent start with a visit from Anthony Jinman, the explorer, just back from the Antarctic. He spoke to every class and answered lots of questions. He was very impressed with the children's knowledge and will hopefully be returning to visit.

Our new literacy programme, Read Write Inc, is having amazing results and the children are really enjoying reading. This was evident on World Book Day when everyone could dress up as their favourite book characters and share their favourite books.

We will be working with the bell ringers after their special request to help them raise funds for the church clock. We are also looking forward to helping with the Chapel's anniversary, when the children will be sketching and writing.



DO YOU HAVE ANY OLD LEGO?

We would love to give it a new home to help with engineering skills. Please drop any unloved Lego in to school. Thank you.



Specialist manufacturer of top quality sheds, stables, summer houses, garages, gates and fencing at sensible prices, made to your requirements

Lower Landlake, Launceston,  
Cornwall PL15 9LU. Tel-01566 774791

[www.landlakesawmills.com](http://www.landlakesawmills.com) . Email- [landlakesawmills@outlook.com](mailto:landlakesawmills@outlook.com)

## Melanie Young

### Local Chimney Sweep and Vac

Master sweep trained

Fully insured

Tel: 01566 889006  
Mobile: 07773 333718  
[swws@hotmail.co.uk](mailto:swws@hotmail.co.uk)

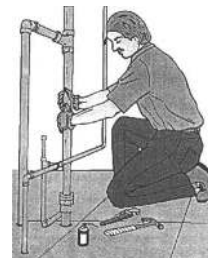


## David Elcock

### PLUMBING & HEATING

Tel: 01566 774249  
Mobile: 07977 041905

Trevalle,  
Daws House,  
Launceston,  
Cornwall  
PL15 7JE



Our experienced dedicated equine Vets now provide a weekly half price visit on Mondays in the Launceston area. We offer a comprehensive, affordable service for all horses, big or small, from stud work to routine vaccinations. Our fully mobile digital X-ray units, scanners and dental tools allow us to bring modern Veterinary skills to your stable.

Phone 01579 382663

Follow us on Facebook for the latest offers and news

facebook





**PRJ ENGINEERING LTD**  
**TRAILER CENTRE**

The Trailer Centre,  
Nr. Launceston 01566 782794  
[www.prjengineering.co.uk](http://www.prjengineering.co.uk)

4 miles from Launceston on B3254  
Email: [sales@prjengineering.co.uk](mailto:sales@prjengineering.co.uk)  
Postcode: PL15 7QH

**Opening Times:**  
Mon - Fri  
8:30 - 1, 1:30 - 5  
Saturday  
9 - 12



TRAILER CENTRE

MAIN DISTRIBUTOR FOR

'BRITAINS LEADING  
TRAILER  
MANUFACTURER'



COVERING CORNWALL AND DEVON

WIDE RANGE OF TRAILERS  
AVAILABLE FOR HIRE FROM £40 A DAY



EXTENSIVE RANGE OF SPARES IN STOCK  
COVERING MOST MAKES OF TRAILER



FULLY EQUIPPED WORKSHOP  
FACILITIES FOR SERVICE AND REPAIRS

LARGE SELECTION OF CHILDRENS  
FARMING TOYS INC. BRUDER & ROLLY TOYS

**SALES \* HIRE  
SERVICE \* REPAIRS**



**Bliss**  
HAIR STUDIO

*New unisex hair salon  
NOW OPEN!*

*Newton Farm, Lewannick,  
Launceston, PL15 7QH*

*Free parking & competitive prices*

*Call Steph on 07506741243 or email  
[steph\\_cornelius@hotmail.co.uk](mailto:steph_cornelius@hotmail.co.uk)  
to book an appointment*

**GEORGE BATEMAN**

*Property Maintenance*

*Small Building Work,*

*Interior & Exterior*

*Decorating, etc.*

*No Job too Small*

**Tel: 01566 773752**

## Harry's christening



On Sunday January 10<sup>th</sup> we were delighted to welcome to our morning service in the Chapel, family, friends and our own members who had come along to celebrate and support the baptism of Harry Seth Pearce. The service was led by Rev Jo Smart.

Harry had been brought along by his parents Karl and Michelle Pearce. (daughter and son in law of Seth and Wendy Davey) Harry was presented with a lighted candle, 'The Light of the World' by a representative of our chapel Mrs Valerie Hosking together with a Certificate of baptism which was also presented to each of his godparents, Jon Davey, Ben Mitchell, Ian Mitchell, (unable to attend) and Gemma Golder. He was taken around the chapel to meet the congregation by Rev Jo and his very proud brother Freddie.

A song especially chosen by the family was sung ; 'If I were a butterfly' with the actions being done by the children present and some adults, and which took a few of us back to our Sunday School Days. It was a joy to share this special service with Harry's family and friends on such a happy occasion. The organist was Mr Gordon Maunder.



Left to Right; Jon Davey, Ben Mitchell, Gemma Golder, Harry, Michelle, Karl and Freddie Pearce.  
*Photo with permission of the family*

## The Really Useful Page

<u>WHAT</u>	<u>WHEN</u>	<u>WHERE</u>	<u>WHO</u>
Lunch Club	Mon 25th April Mon 23rd May	Methodist Hall 12.30pm	Wendy Smith 782204
Coffee morning	Sat 9th April Sat 14th May	Methodist Hall 10.30am	Tony Smith 782204
Knitting	Most Thursdays at 2pm	West Petherwin Farm	Muriel Parsons 773027
BIMBO's (over 50's keep fit)	Every Monday (except B/hols and lunch club dates)	Methodist Hall	Vi Brook 779243
Bell ringers	7.30 pm Mondays	St Paternus Church	Nigel Parker 773233
Skittles	7pm Tuesdays	Village Hall	Peter Northmore 778744 Vi Brook 779243
Bingo	Last Wednesday of the month 2pm	Village Hall	Pat Locke 774671
Table Tennis	10am Tuesday mornings	Village Hall	Sue Vernon 772640
S. Petherwin Cricket Team	Weekly practice and fixtures	S. Petherwin Cricket ground	07810 493583 07973 909556

**Community Shop  
and Post Office**  
(In St Paternus Church)



**Opening Hours-**  
**Mon - Sat 8am - 12.00**  
(Not open on Sunday)

### Cornwall Council

**Tel 0300 1234 100**

**Website;**  
**www.cornwall.gov.uk**

**Email ; enquiries@cornwall.gov.uk**

**Cornwall Councillor: Neil Burden**  
**01566 782286 nburden@cornwall.gov.uk**



### Useful Information

**The Little Red Bus** (Launceston Community Transport Partnership) covers South Petherwin area on Thursdays. For information, ring 777960

**Village Hall:** To hire hall, contact Sue Vernon 772640

**Methodist Hall** To hire hall, contact Wendy Smith 782204

**Oil Syndicate** Contact Sue Vernon 772640

### Local Member of Parliament

#### **SCOTT MANN (con)**

#### **Contact details;**

**Westminster**  
Scott Mann MP  
House of Commons  
London  
SW1A 0AA



**Constituency**  
Office of Scott Mann MP  
10, Market House Arcade  
Fore Street  
Bodmin  
PL31 2JA

**Telephone 01208 74337**

### Church Services

#### St Paternus Church (C of E)

Sunday worship at 11.15 (no service on 5th Sunday of the month)

**Easter Saturday ; 6pm** Service of reflection  
**Easter morning sunrise service.** 6.30am Trebartha swan pool followed by breakfast in the laundry rooms

Vicar; Rev Anne Brown  
01566 770649

Church wardens ;  
Deborah Adams 7744244 Barbara Cobbledick 772559

#### Methodist Chapel

Sunday Service at 11am  
Minister; Rev Jo Smart 782921 (NB new number)  
Steward; Tony Smith 782204

### **Rubbish and Recycling Collection Dates**

Both rubbish and recycling are collected on a **WEDNESDAY**.

Rubbish is collected every Wednesday.

Recycling on alternate weeks.

Next recycling dates are 30th March  
13th and 27th April

**For more information go to-**  
**www.cornwall.gov.uk**



### Useful Numbers

#### **Emergencies:**

Police Ambulance Fire Brigade Coastguard  
999

Police (Non emergency-general Enquiries) 101  
Email;  
101@devonandcornwall.pnn.police.uk

Environment Agency—Emergency Hotline  
0800 807060

South West Water 0800 169 1144  
Western Power Distribution - emergency 0800  
6783105  
Crime stoppers 0800 555111

### South Petherwin Parish Council

The Parish Council meets on the second Wednesday each month at 7.30 pm in the Methodist Chapel. It is open for anyone to come and listen in.

#### **Parish Councillors are:**

Chairman: Dawn Rogers  
Clerk: Alison Barham  
Tel; **772596** or email;  
**parishcouncil@southpetherwinpc.org**

#### **Councillors:**

Michael Screech, Andrew Hosking,  
Adrian Finnimore, Roger Kneebone,  
Nik Burgess, Julie Butler, Phil Parsons  
John Whiting, Chris Powlesland