

GEORGE BATEMAN

Property Maintenance

Small Building Work,

Interior & Exterior

Decorating, etc.

No Job too Small

Tel: 01566 773752



*New unisex hair salon
NOW OPEN!*

*Newton Farm, Lewannick,
Launceston, PL15 7QH*

Free parking & competitive prices

*Call Steph on 07506741243 or email
steph_cornelius@hotmail.co.uk
to book an appointment*

South Petherwin Parish Magazine



Issue no 69

Sept 2015

Parish welcomes new headteacher!

Meet Theresa Mills, the new head teacher at South Petherwin school. She took up her post in early September. We wish her every success and look forward to seeing her around the parish.

Full story on page 22



Parish Magazine Committee

Helena Northmore (778744 hmnorthmore@msn.com) Helen Masters (775545) Phil Parsons (777179), Cherry Pyke (776998), Sue Vernon (772640), Peter Northmore (778744), Mary Stoneman (773375) Alison Barham (777561)

Advertising rates are as follows, for a full year (six issues): quarter page: £30 half page: £60 full page: £120. Please speak to Alison Barham on 777561. email; paulandaliteal@btinternet.com. Personal announcements are free of charge.

Copy for the next issue of the Magazine should be given to a member of the editorial committee not later than **7th November 2015**. (Please remember to attach your name and telephone number in case of queries.)

No More Jokes About Loose Canons or Big Guns Please

If I have ever in the past, considered the Honorary Canons of Truro Cathedral, it has been in terms of them having the role as a long service award, bestowed on clergy in recognition of their years of hard work, ministering, or for their commitment to strenuous theological vigour. So to find myself one morning in July, reading a letter, inviting me to become an Honorary Canon of Truro Cathedral, was a shock. I was flabbergasted, to say the least!

I have neither been ministering for years, or ever been committed to academic vigour. I even checked with the Bishop's Chaplin that it was correct. All that said, it is a great honour and I will be installed as a honorary Canon, to the Stall of St Neot, in Truro Cathedral on September 27th during the service of Evensong at 4pm. In many ways I see this honour as a reflection on the parishes to which I have been called to serve and their willingness to engage with the Good News of Christ. So I thank you all for your support and encouragement.

Rev Anne Brown

*Congratulations Anne for the honour and well deserved recognition of your work in the parish.—
Magazine committee*

Defibrillator

You may have noticed that the toilets are being painted, which is in preparation for a new noticeboard. This will feature a parish map, important information about the defibrillator, emergency contacts and any other details on fundraising etc. There will also be a plaque thanking all our sponsors.

If you kindly put your name down for the VETS scheme (the emergency call system for the village), this is on hold at present as currently the local ambulance service will not automatically dial the VETS number when you get through to them. It would mean that after dialling 999, you would then need to call a separate VETS number, and we felt that this would not always be possible in the time of an emergency. We are hoping that this will change in the future and will keep you posted.

Thanks to the support of the parish council agreeing to a formal arrangement allowing SPED to use the parish toilet wall for the benefit of non-commercial promotion of parish information.

Alison Barham



South Petherwin Website

Catch up on all the latest parish news and information! Visit the website at www.southpetherwin.com.



A big hello
to all the children
starting reception at South
Petherwin school
this term!

And good luck
and best wishes
to all those
starting Year 7
at a new school



Parish Council Diary Dates 2015

Parish Council Meetings
are on the second Wednesday
each month.

They are held
May to- October at the Village Hall,

November to April at the
Methodist Chapel Hall

**Members of the public welcome at
all these meetings**

Launceston Then!

Launceston Then! is a website
full of interesting photo's, facts
and nostalgia about Launceston.

Go to
www.launcestonthen.co.uk



at Sterts Theatre, Upton Cross.

There will be a final performance of
Addams Family, the Musical,
on Sat. 31st Oct. at 6.30pm.

Before that there will be
spooky goings on in the grounds,
Halloween food & games.

Dress up, go, & have some fun.
01579 362382 www.sterts.co.uk



Noticeboard



Happy 80th birthday

Sylvia Cheeseworth
On
22nd September 2015

Love Robin, Helen, Jacob,
Callum and Morwenna xx

South Petherwin Methodist Chapel

Harvest Festival Services

SUNDAY 4th October 11.00am
Led by Rev P Craig (Bude)

TUESDAY 6th October 6.45pm
Short service led by
Rev Mary Williamson
Followed by a Harvest Supper: £5
Bookings please to
Mary Stoneman Tel 773375

Advertising

We have some advertising spaces available, so if you would like more details please contact Alison Barham on 01566 772596. The Parish Magazine is free and distributed to all households in the Parish, reaching over 930 people.

FOR SALE

**Kitchen/utility Stainless
Steel Right hand bowl sink
with taps
£20**

**Tel
773375**

FOR SALE!

If you'd like to advertise any item for sale, or celebrate a birthday or anniversary, or just shout about something special please email -hmnorthmore@msn.com or contact any of the magazine committee (details back page)

Wind Turbine Application

A planning application is being prepared for Cornwall Council for the erection of one wind turbine, approximately 77m height to tip, on land to the west of Botathan Abattoir, South Petherwin. For more information or to make comments on the proposal, please contact me at: wtconsultationresponse@gmail.com.

Comments which are received and subsequently submitted to the Local Planning Authority as evidence of the consultation may be published by the Local Planning Authority on the Council's website upon registration of a valid planning application. The deadline for submission of comments is 18th September 2015.

A public notice has been issued in the local newspaper accordingly and further information will be provided in due course on a website.

Walter Wonnacott

Parish Clerk News

We are now in the quieter season of the Parish Council year due to the summer holidays.

Two big issues are being worked on at the moment. In order to give greater public transparency, all councils are required by law to publish their agendas, minutes and financial information in an easily accessible public format. We are very lucky to have our Parish Website, where the Parish Council minutes are already posted. With the help of Roger Pyke we are now posting meeting agendas, and will be looking into the format for financial information in the near future.

Secondly, in a major cost-cutting initiative, Cornwall Council will stop sending out paper copies of planning applications to town and parish councils, starting from January 2016. Many councils have expressed concerns as not all councillors have access to computers and/or WiFi and they are worried that the Council cost savings will have a knock-on effect on their budgets. Luckily all the Councillors in South Petherwin have access to computers, but we will be considering how the changes may affect us, and will look at any additional resources that may be required.

Following last year's successful mobile Skatepark event in the school grounds the parish council is planning to hold a repeat event in the Autumn. Further details will be advertised closer to the event.

**You can contact me on 01566 772596
or email parishcouncil@southpetherwinppc.org.**

*Alison Barham,
Parish Clerk*

South Petherwin Community Shop is OPEN!



**Opening hours: Monday to Saturday
8.00 a.m. - 12.00 noon**

We're a new, friendly and convenient local shop in the village with a good range of essential food, household items and newspapers. We are situated within St Paternus Church – just come through the main Church door and you'll see us in the back corner. At the moment we are open 8-12.00 Monday to Saturday and really great news – we'll be running the new local Post Office soon too which is opening on the 17th September. You will find most of the food drink and household items you will need including: fresh bread, milk, cheese, cream, snacks, cereals, tinned foods, fresh local vegetables, cold meats, greetings cards, newspapers, etc.

For the Community – by the Community!

It's a community shop and is run by Sue with able assistance from Kate and a small team of fantastic local volunteers. The shop is here for everyone in the local community (and visitors from outside too!) - so please do tell us what you think, what else you might like to see us selling and also if you would like to get involved. We're looking for more volunteers who can help out with a range of shop related tasks for a few hours in the week.

Call in and see us – let us know if you have any specific requests for stock items or if you would like to be one of our volunteers

Telephone 01566 788198

Email southpethcommshop@btconnect.com

www.facebook.com/southpetherwincommunityshop



Post Office opening 17th September 2015

all served with a smile and a helping hand

Alabaster Ministries with Roz Heyns is a new ministry but plans are well underway to begin caring for these dear ones. At the other end of the spectrum Roz is also seeking to help young girls. The culture is such that no girl from the age of eight onwards can say NO to a man – be it her father, brother, uncle, or friend passing through which explains some of the high rate of births.

But life in Malawi is not easy for anyone. Unable to bend my knees to use a 'hole' in the ground, I was spared the difficulty of sleeping in a tent and stayed in lodges when travelling. Please don't imagine a lodge as in the west. I have slept in dirty, sweaty, lorry driver sheets. Often there was no running water and I had to use a bucket with a mug to wash with, and to flush the loo. I also travel with a kettle to make a cuppa—but when the socket is falling out of the wall with bare wires, I have often used one higher up the wall but then have to stand holding the kettle while it boils.

While the Malawians are happy people they have no understanding of time – despite the majority now having mobiles! The longest I have waited for a church meeting to start is 5 hours! Churches which are small, have mud floors, (but the team and I do get a chair) and are generally dark to keep out the sun, but I much prefer the meetings outside under a tree.

Despite their poverty people in Malawi have a wonderful sense of humour as this signpost shows. And we complain of potholes?

Penny Shelswell

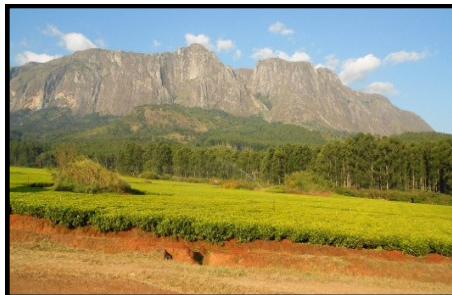


No apologies for reprinting this great cartoon by Roger Pyke.

You're calling *me* God? To work in Malawi? Surely not!

Penny Shelswell, who lives in South Petherwin, describes her voluntary work as a missionary in Malawi and her surprise to find herself there!

Life is full of surprises and none more so than in 2009 when I clearly heard the Lord say, 'I want you to go to Malawi'. I burst out laughing at such a ludicrous suggestion! I was in my mid sixties and had never thought of going to Africa. Plus the fact that as a child I had heard that missionaries— whatever they might be— met lions, poisonous snakes, and lots of creepy crawlies. Not for me thank you. But I have since learned the more ludicrous the idea the more likely it is to be of the Lord!



Having now visited every year for seven years, I can honestly say the Lord was right, despite my misgivings. It is a beautiful and friendly nation known as 'The Warm Heart Of Africa'. There are mountains, rivers, plains and game parks, not to mention the 360 mile long Lake Malawi, and of course the lovely climate. It never has frost or snow! Efforts at tourism have been made but there is still a long way to go. It is staggering to see so many people working on the land in their 'gardens' – what we would call fields - of about 2 to 3 acres. I have yet to see even an ox pulling a plough; it is all dug, planted and watered by hand.

My main role is to teach the Word of God in the little villages. Seeing people released from demonic spirits, healed and come alive by the power of the Lord through His Word is a great joy and privilege. A wonderful highlight this year was the greatest miracle of all, 26 people making decisions to follow Jesus in one area church alone.

In the future I shall be working in the south only and mainly with the elderly, some 400 or more! There is no care for elderly people. This photo shows two sisters. The one in the pink headband was 97 and recently died leaving the older sister, who is blind and 99 to care for herself.



STONE COTTAGE ?

SOLID WALLS ?

**ARE YOUR INTERNAL WALL SURFACES
COLD / CONDENSATING?**

**CALL YOUR LOCAL EXPERTS
FAIRLY RUN BUSINESS
30 YEARS EXPERIENCE
FREE SURVEY / QUOTE**

**CALL CHRIS LYLE PLASTERING
AND PROPERTY MAINTANENCE**

**OFFICE 01579 371236
MOB 07861783082**

www.chrislyleplastering.co.uk



**SERIES
ESTABLISHED 1856**

**Your local paper
published
every Thursday**

**Tindle House
Westgate Street
Launceston
01566 772424**

**Also available on-line
www.launceston-today.co.uk**

**Pennygillam Way
Launceston, PL15 7ED**

Monday - Friday 8.30am-6.30pm
Saturday 8.30am-12.30pm

Free Nurse Clinics:
Adolescent checks
Senior health checks
Dental check
Weight check
Rabbit check



**Pets Tel 01566 772211
Farm Tel 01566 772371**

Consultations by appointment only
24hr in-house emergency service

New Bereavement Clinics:
Our qualified ALLY nurses
can provide you with support,
both before and after
the sad loss of your pet.

Castle Veterinary Group

Personal, Professional & Compassionate Care

www.castleveterinarygroup.co.uk

JOHN RAWLING

Farmer, County Councillor, JP, and Methodist Minister who was instrumental in building the road through South Petherwin

There is a fascinating story on the South Petherwin website (www.southpetherwin.com) about John Rawling who was born in 1841 in Bradstone Devon. His father William was a farmer at Oldwit farm in South Petherwin. (Currently owned by Julian and Barbara Cobbledick). On leaving school, John went to work on his father's farm, taking over when his father died in 1868. John married Caroline Nickell in Bodmin in 1884 and they had three sons, the eldest of whom, William tragically drowned off Trebarwith at the young age of eighteen.



John was very successful in public life. He acted as the South Petherwin representative on the Launceston Board of Guardians, and a member of the main roads and bridges committee. He helped unemployed miners in Stoke Climsland by arranging for them to do useful work on improving the roads in that area. Following this successful venture, a new committee was formed with John as the Hon Secretary to make improvements to the roads in South Petherwin. Funds were apparently easier to raise in those days and John collected a massive £900 to finance the project.

The committee wanted to use a scheme incorporating Vicarage Lane, which was owned jointly by John and Rev H. T. May. John was willing to give up his part, but Rev May wished to keep the lane private. The map shows what was Vicarage lane from Squances Corner (Wesley House) down to the old vicarage. By using this lane a through road could be built from Squances Corner to Petherwin Water thus doing away with the need to go around the steep climb of the old road.



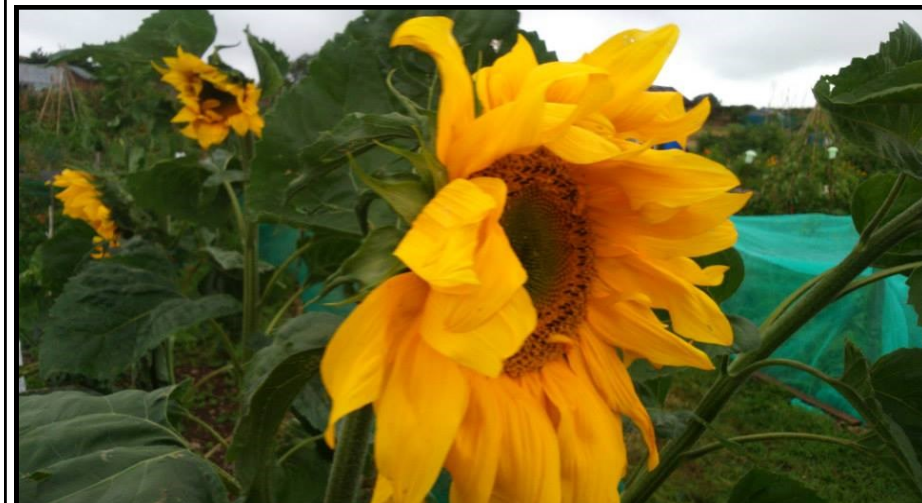
The committee asked the surveyor to draw up an alternative plan but this proved too costly. John was convinced the Vicarage Lane plan was the most effective and after some persuasion, managed to obtain Rev May's consent. The construction of the road took 4 years and necessitated cutting into sheer rock in places to a depth of 15 to 20 feet. The new road running from Squances Corner in South Petherwin to Petherwin Water was completed in 1889 at a total cost of £1,462



We always have space for anyone who wants to join our group with plots ranging in size from quarter plots to full plots, and even if you don't have much time to spare, a little plot can yield aplenty.

Contact for information: southpetherwinallotments@gmail.com

Rosemarie Lane



All photo's by Abi Caine

South Petherwin Allotment Group

The allotment group have had a very busy season with two new plot holders joining us. The site is such a peaceful place we all enjoy our time there as a haven from our busy lives.

In July we had our summer work day.

We had planned what we needed to do, and thanks to all who turned up on the day we managed to finish setting up our composting toilet (a very necessary utility on the site!).

We also set up another rainwater harvester for three IBC's to enable us to fill the water tank and gravity feed the troughs around the site. An IBC is a big plastic container used by industry for liquids. (see the photo) It has a tap and a metal protective cage and allotment gardeners use them for water storage.



During our summer work day we made a bonfire of any burnable natural rubbish and in the evening lit this and had a barbeque for family and friends. Thanks to an ingenious re-styling of a metal wheelbarrow we had an excellent fast cooking barbie big enough for everyone to cook their food.



John was a remarkable man who held many high profile positions during the rest of his life. He served as a County Councillor for 15 years, was a director of Dunheved College, and a Justice of the Peace. He was a pioneer of new farming techniques and was regarded as one of the leading agriculturalists in the area. He was chairman of the County farmers union. John was also a devout Wesleyan and preached for over 50 years in the local area. For some thirty of those years he ran a young man's class at South Petherwin

John died on 20th September 1912 at the age of 71 and is interred at South Petherwin Methodist Chapel.

Helena Northmore

Thanks to Roger Pyke for discovering this story and inviting the magazine to reproduce it. For the full version, go to www.launcestonthen.co.uk

Cornish Customs

Now we are in full swing of harvest time. 'Crying the neck' and 'Guldize' are Cornish harvest traditions. 'Crying the neck' goes back to the days when the reaping had to be done either with the hook or scythe and the harvest therefore often lasted for many weeks. The neck was the very last handful of standing corn and the cry would go up 'We have it! We have it!'

The neck itself was quickly woven into a "shock" or Corn Dolly which was then carried to oversee the Harvest feast known in Cornish as 'Guldize' (sometimes Goel Dheys, Goldize or Nickly Dize). On the evening of the day on which the neck was cut the harvesters would repair to the farmhouse kitchen where everyone would sit down to a substantial meal of broiled pork and potatoes, followed by apple pie, cream and 'fuggans' (bit like a rock bun), all washed down with cider and spirits. A regular Guldize event is held in Penzance every year in late September.

Alison Barham

Cereal Harvest

This summer, reports of the cereal harvest around the parish farms have been mixed. The winter barley, planted in the Autumn and harvested at the end of July and beginning of August hit records highs of nearly 4 ton acre, with several averaging three tons or more.

The spring corn, planted in March and April, is looking promising, yield wise, but the heavy rain and winds are delaying harvesting and possibly the overall yield. No doubt as the school term begins and the days shorten the sun will shine and the combine harvesters roar as once again the crops are safely gathered in.



Photo courtesy of Phil Parsons



PVCu WINDOWS & DOORS CONSERVATORIES KITCHENS & BATHROOMS
GLASS BALUSTRADES BUILDING SUPPLIES

Kings Hill Industrial Estate, Bude EX23 8QN www.kjbromell.co.uk 01288 357020

- ◆ we manufacture, supply and fit double glazed PVCu windows, doors and custom designed conservatories
- ◆ we design and supply beautiful, functional kitchens, bathrooms and wet rooms to help you create your ideal home
- ◆ open up the view from your patio or balcony with glass balustrading supplied and fitted by our skilled craftsmen
- ◆ at our site in Bude we have a large building supplies shop – open to both trade and the public.

Come and see what we have to offer!

Jonathan Blake

Money Management

Jonathan Blake lives in South Petherwin and offers personal service and access to uncomplicated independent financial advice.

Jonathan Blake Money Management Limited
Unit 1, Holwood Business Centre Blunts, SALTASH
Cornwall PL12 5DW

Tel: 01752 851748 Mobile: 07970 011651

**E-mail: info@jbmml.co.uk
www.jonathanblakemoney.co.uk**

Jonathan Blake Money Management Limited is authorised and regulated by the Financial Conduct Authority.

**CHRIS LYLE
PLASTERING
&
Property maintenance**
T: 07861783082



Traditional Plastering Over 25 Years experience
Concrete Paths/Patio Slabs
Lime Works
Members of Guild of Builders & Contractors
Tyroleaning
Damp Proof Works Friendly / Reliable
Dry Lining
Plastering over Artex Local Family Business
External rendering
Painting- Internal/External . Recommendations available
Free Quotations/ Insurance quotes / Fully Insured

Visit for more information
www.chrislyleplastering.co.uk
Rezare Cottage, Rezare, Launceston, PL15 9NX
E: chrislyleplastering@yahoo.co.uk

**HIRST CONSTRUCTION Ltd
HIRST ENVIRONMENTAL SERVICES Ltd**

Week St Mary, Holsworthy
SEPTIC TANK CLEARANCE/
installation of all septic/ treatment
plants. Blockages.
Bedding sand (bulk)-plant hire/skips
Mini digger work/groundworks. Free
estimates

SEASONED WOOD LOGS



1/2 load softwood
only £70. **Delivered
free to South
Petherwin Area**

www.hirstconstruction.co.uk
01288 341095/07836533535

Ruby's Garage



Car, 4x4 & Light Commercial

Sales, Service & Spares

Your local family owned independent garage for over 40 years
Specialising in advanced vehicle technology

- Servicing and MOT facilities
- Workshop equipped with latest all makes Diagnostic Equipment
- Competitive prices on Tyres, Batteries and Clutches
- Specialist in 4x4's with wide range of spares currently in stock
- Suppliers of new and used Cars, 4x4's and Light Commercial
- Full bodyshop facilities including insurance work carried out
- Air Conditioning checks and servicing carried out

For more information or advice, contact us by the following:
TEL: 01566 782402/782536 FAX: 01566 782741

Group Travel

Enterprise park, Midway Road, Bodmin, PL31 2FQ

2015 EXCURSIONS

14-20th Oct	Scotland Cairngorms 7 days, 6 nights half board
26th Oct	Halloween at Harry Potter World
7th Nov	Bridgewater Carnival
16-20th Nov	Turkey and Tinsel Isle of Wight
28th Nov	Clarks Shopping Village
4-7th Dec	Bruges and Brussels Christmas Markets
13th Dec	Mousehole and Angarrack Lights
20th Dec	Olympia World Showjumping Qualifier



FOR BOOKINGS AND BROCHURE

PLEASE CONTACT 01208 77989/ 01208 72669

16 TO 70 SEAT COACHES AVAILABLE FOR PRIVATE HIRE, CORPORATE WORK,
WEDDINGS (CAN INCLUDE STAG & HEN PARTY PACKAGE) AIRPORT TRANSFERS.

Website; www.grouptravelcoachhire.com

Email: benneymoon@btinternet.com



BoilerCare Ltd.

**South Petherwin and Daws House residents get
a 10% service discount.**

We carry out services and repairs for oil fired
boilers and cookers in the Launceston area.

Our engineers carry spares as standard and aim
to fix breakdowns in one visit.

Speak to us on **01566 782 789** for more information,
or visit our website at www.esgboilercare.co.uk



Gardening Matters

This summer has certainly shown that rarely are two growing seasons the same. From high temperatures early on to sharp fluctuations in day and night temperatures and then in August, rain. This years' weather has had an impact on the success of many fruit and vegetable crops and summer flowering plants.

Jobs in September

Pruning/Picking

- Continue deadheading and picking flowers to extend their flowering period.
- Evergreen hedges can be trimmed back to a tidy shape which should last through the winter.
- Keep picking fruit and vegetable crops to prolong their production.
- Herbaceous perennials can be cut back once flowering is over or can be left until early spring.

Sowing and planting

- Seeds that can still be sown include winter onions to mature next year, spinach beat will remain through the winter and winter lettuces can be sown under cover in a greenhouse or under a cloche.
- Strawberries have started to send out runners and these can be severed and replanted to establish for next year.
- Start planning and planting spring flowering bulbs.
- Now is a good time to move and divide herbaceous perennials.
- Keep Camellias well-watered in autumn to help establish healthy buds for flowers next spring.

If you would like to share your growing successes or disasters from this summer in the magazine feel free to email me at; samnella@talktalk.net

Ella Payne



Beautiful Gardens of South Petherwin

This stunning garden belongs to Bernard and Barbara Wadham who live in Trelinnoe Gardens.

New Methodist Minister

We give a warm welcome to our new Probationary Minister Rev Jo Smart as she takes up her exciting new journey within our Launceston Circuit. She has come with excellent recommendations from her last church at Ivybridge just across the Tamar.

Rev Jo, with her husband Andi and family, have just moved into The Manse, at Coads Green and we hope that they are settling in well.

We very much look forward to meeting Rev Jo when she takes her first Communion Service at South Petherwin Chapel on 20th September 2015 and she is with us again on Sunday 25th October 2015.

Mary Stoneman



South Petherwin Community Fund

Invites applications from individuals or organisations for money which has been donated by operators of some of the wind turbines in the Parish.

**Easy application forms are available from
Rachel Jeffery:
rjeffery1978@hotmail.com
01566 777974 or 07932838999**

**Completed applications should be submitted
by Friday 2nd October**

**Funds must be used to enhance the lives of Parishoners
or raise the profile of the Parish
Applicants do not need to live in the Parish.**

Applications to become a fund trustee are welcome.

LOVATON BOARDING CATTERY

Feline Advisory Bureaux Listed Cattery

Daws House, Launceston, PL15 7JF

Home from home holiday for your cats, run by a qualified
Veterinary Nurse; pick up and delivery service available.

Modern purpose built PVC cattery, deluxe heated penthouse chalets

*Please ring Andrea for more information on 01566 778501 or email
andrea@lovatoncattery.co.uk or visit www.lovatoncattery.co.uk*

Adrian Davey Painting & Decorating

Exterior & Interior Painting, Wallpapering

Home 01566 780477 Mobile 07729500390

NIC PARKER



**Mobile
hair-
dresser**

*Fully Qualified
over 20 years experience
Competitive rates
Ladies, Gents and Children*



**Tel; 01566 772393
Mob; 07816 183125**

36 Trelinnoe Gardens South Petherwin



**Fully Insured Lady Gardener
RHS Level 2 Certified**

**Do you need extra help to keep
your garden just the way
you like it?**

Whether it's regular appointments or a particular garden project, I offer:
Planting and care of beds, border & Containers, design and re-design ideas, weeding, digging and general tidying, pruning and cutting down, lawn and hedge cutting

07968 170130



School News By Helen Masters



Theresa Mills: New Headteacher

Theresa studied History at Exeter University followed by teacher training at Cambridge University. She has been teaching for 27 years and during this time has been an Advanced Skills teacher at Wadebridge and Head of School at St Stephens Academy in Launceston, which was her last post.

Theresa lives in Launceston and is committed to improving community and village links. She is looking forward to getting to know everyone and is committed to ensuring that every child at South Petherwin achieves their potential. We would like to welcome Theresa to our school and village and hope she will thoroughly enjoy her time with us.

Curriculum

This term, Early years and Class 2 are learning about Light, the Enormous Turnip, Poetry and in Science: materials. Class 2 will be doing Forest schools one morning a week, enjoying outdoor education. Classes 3 and 4 are also learning about light, as well as Tudor homes and the Vikings.

Wanted

We are looking for people to listen to children read. It only needs to be for 20 minutes, at any time suitable for you. We would also be grateful for helpers for cooking, gardening or any crafts, also at a time to fit in with you. Thank you in anticipation.
School tel; 776363

CRICKET SEASON ENDS

As the cricket season comes to an end South Petherwin Cricket Club and visiting teams have all appreciated the new rolling wicket covers. If a shower threatens to stop the game the new covers are rolled over keeping



the wicket dry. The club would like to thank the funders and the team that put it together.

For more info about the cricket club ring
07810 493583
07973 909556



H. R. JASPER AND SON LTD

WHOLESALE BUTCHERS

BOTATHAN ABATTOIR
SOUTH PETHERWIN
LAUNCESTON
CORNWALL PL15 7JL

Tel: 01566 772843 (3 lines) Fax: 01566 776648

HOUSE AND GARDEN WOODCRAFT

Multi-skilled tradesman with over 30 years experience: professional carpenter and joiner-general household maintenance-bespoke handmade household & garden furniture-kitchens and bathrooms-small household plumbing jobs



Looking for an honest worker and a reliable friendly service?

If so, call Arthur Philp on
01566775289 or
07890104755



**Andrew
Hosking**

Springfield
Tregaller Lane, Daws House
Launceston, Cornwall
PL15 7JH
Tel 01566 772537/
775818

Designer & Maker of
Quality Furniture & Joinery

Radford Plumbing

Kitchen & Bathroom Fitting

*Kitchens, Bathrooms, Wet Rooms
General Plumbing, Tiling Electrical Work,
Flooring Carpentry, Plastering*



- Free Quotes
- All work to high standards and guaranteed
- We manage your project from start to finish

Guy Radford

01566 782 070 / 07825 611 580

guy@radfordplumbing.co.uk

www.radfordplumbing.co.uk

Wood View, North Hill, Launceston, PL15 7PQ



Specialist manufacturer of top quality sheds, stables, summer houses, garages, gates and fencing at sensible prices, made to your requirements

Lower Landlake, Launceston,
Cornwall PL15 9LU. **Tel-01566 774791**

www.landlakesawmills.com . Email- landlakesawmills@outlook.com

Rubbish and Recycling Collection Dates

Both rubbish and recycling are collected on a **WEDNESDAY**.

Rubbish is collected every Wednesday

Recycling (and garden waste for subscribers) on alternate weeks.

Next recycling dates are 14th and 28th Oct 11th and 25th Nov

Helpline number-; 0300 1234 141



A CAKE FOR DI

By Sue Vernon

I was given a schedule for Launceston Show when I bought my ticket this year and it jogged my memory – 12 months ago my friend Di had asked why I didn't enter any baking in the craft competition. After some discussion I agreed to do so the following year if she let me have a schedule in good time. Very sadly, Di died at the beginning of this year and so I entered the set cake competition in memory of her. I hope she would have been very pleased that I actually achieved second place.

Set recipe -

Date & Walnut cake

225g /8oz chopped dates

225g/8oz castor sugar

1 egg, beaten

1 tsp baking powder

1 tsp vanilla essence

1 tsp bicarbonate of soda

75g/3oz butter, softened

50g/2oz chopped walnuts

1 tsp salt

300g/10oz plain flour

Topping

5 tbspn brown sugar

4 tbspn double cream

50g/2oz butter

50g/2oz walnuts to decorate

Heat oven to 180C/ 350C

Pour 250ml/1 cup of boiling water over the dates and bicarb of soda. Leave to stand for as long as it takes to mix the dough. Grease & line a 9" round cake tin.

Cream the butter, egg & sugar together until pale & fluffy.

Add sieved flour, salt, baking powder, vanilla essence & chopped walnuts & mix well. Add the date mixture & beat until smooth. Pour into prepared cake tin & bake for 35 – 50 minutes until a skewer inserted in the centre comes out clean. Cool on a wire rack.

Topping

When cake is cold, make topping:

Put brown sugar, butter & cream into a small pan. Bring to the boil for 3 minutes only. Allow to cool for a while. Spread over cake & decorate with walnuts.

Mobile Foot Care

Sally Isaac S.A.C. Dip. FHPT/FHPP

**Gentle and professional
foot care in the comfort
of your own home**

*If you suffer discomfort from
**corns, callus, ingrown toenails,
cracked heels, thickened nails**
etc. or just have **difficulty cutting**
your toenails give me a ring*



Telephone Sally on 07961 076 168



LANDSCAPING & GARDENING

At Hine landscape gardening,
we have available a team of expertise.
We can help you realise the potential
of whatever outdoor project
you have in mind large or small.

Maintenance - Lawns - Trees - Clearance - Stonewalling

07967 387748

www.hinegardening.co.uk
e: hinelandscaping@yahoo.com

Trecrogo Chapel House, South Pethewin, Launceston

SERENE REIKI

Natural healing for the body and mind.

Reiki is an invisible, gentle energy that works by balancing
a person's energy system, promoting the body's own natural
ability to heal, on all levels.

Japanese Face and Foot massage.

Japanese face massage can improve the appearance of the skin.

Japanese Foot massage the feet are the very foundation for our physical being.

Serene Reiki gift vouchers £25 buy your loved one a very special gift.

Sue Bonsor Reiki Practitioner/Teacher/Master, & Tsuboki Face & Foot
Masseur based in Daws House, Launceston, Cornwall. Call me on 07771 976436.

See me on www.serenereiki.co.uk Member of the UK Reiki Federation



Scam Telephone Calls!

Where would we be without another telephone nuisance call? We
have the Microsoft - 'Madam, we have detected a virus on your
computer software' one, numerous PPI ones but recently two new
ones have come to light.



The first one was a recorded message, from a very English sounding gentleman,
informing me that I am due a refund from my bank. He told me if I wanted to find
out more press 5 or if not press 9. Of course I did neither and swiftly put the
telephone down.

A few days later, I received one from a lady who already knew my name! I immedi-
ately asked 'to whom am I speaking please?' and after getting her to repeat it twice
(some business name I think) still could not catch it. She then proceeded to inform
me that she understood I was suffering a lot of pain, to which I again promptly put
the telephone down.

Please be very vigilant when answering these calls and do NOT divulge any
personal information. Hopefully they will eventually go away. My favourite phrase
being 'Have I asked you to call me?' The call is ended immediately! The plug was
pulled!

Mary Stoneman

Neighbourhood Watch Co-ordinator



Oil, Gas & LPG



Boiler Servicing & Repair



Plumbing & Heating

Over 35 Years Experience

Tel: Launceston 880 123

**COME VISIT OUR
BATHROOM SHOWROOM
AT**

KENNARDS HOUSE

(We are opposite Trethorne Leisure Park)

www.dowsons-online.co.uk



R Mears & Sons Chimney Sweeps

Established over 30 years

Vac Brush. Full CCTV investigations.
Pots, Cowlings & Bird Protection fitted.

Solid Fuel Appliances, Rayburns,
Woodburners, Stoves etc serviced.

Fully Insured.

Tel: 01840 261221

Mob: 07737 533392

www.sweepcornwall.com



Moths and Butterflies

Moths that flutter in the night

There are various visitors to our gardens during the night: badgers, foxes, a bat or two, a few moths – a few moths!

One night in July a group of ‘mothers’, led by Mary and Tony Atkinson, conducted a survey of moths at Petherwin Water. They recorded over 300 hundred moths of nearly 80 different species. Some wonderful names included the july highflier, dingy footman, small fan-footed wave, coxcomb prominent, scalloped oak, mother of pearl, swallow tail, the delightfully named uncertain, and a spectacular specimen of the elephant hawk moth.



Elephant Hawk Moth

A bright light was set up throughout the night to attract the moths to the trap. In the morning the trap was opened up and interesting specimens were put into test tubes so that they could be studied more closely. Records were made of the various species. Where the identification was not clear, the specimens were photographed for closer examination. The moths were then released back into the wild. The records will be submitted to the Cornwall County Moth Recorder, and after verification will be added to the national database. If you are interested in moth identification or would like further information, have a look at the website:

<http://www.cornwallmothgroup.org.uk>.

After the mothning event, the Launceston Area Parish Wildlife Group held a botanical walk, led by Ian Bennalick in West Petherwin Wood (by kind permission of Phil and Jo Parsons) and the surrounding footpaths. It was a little late for the best of the common twayblade but a few specimens were still to be seen, together with many other interesting plants. These brought the number of recorded species in a one square kilometre area to over 200. More information about the Wildlife



Common Twayblade



The first step for bright young things.

Our experienced staff develop “*warm and caring relationships with the children that foster a general sense of trust and well-being*” and “*help to promote the development of early communication skills and a positive attitude to learning.*” Ofsted

Monday, Tuesday, Wednesday & Thursday : 9am – 3pm

Friday : 9am – 1pm Lunch Club: 12 – 1pm

£9 half day / £18 full day

We now have places for funded two year olds.

For more information call Rachel on 01566 779476

Charity Number: 1024955

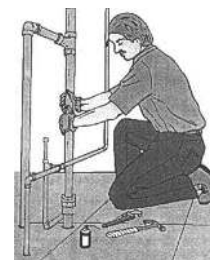
David Elcock

PLUMBING & HEATING

Tel: 01566 774249

Mobile: 07977 041905

Trevale,
Daws House,
Launceston,
Cornwall
PL15 7JE



Our experienced dedicated equine Vets now provide a weekly half price visit on Mondays in the Launceston area. We offer a comprehensive, affordable service for all horses, big or small, from stud work to routine vaccinations. Our fully mobile digital X-ray units, scanners and dental tools allow us to bring modern Veterinary skills to your stable.

Phone 01579 382663

Follow us on Facebook for the latest offers and news

facebook

PRJ ENGINEERING LTD
TRAILER CENTRE

The Trailer Centre, Nr. Launceston 01566 782794
www.prjengineering.co.uk

4 miles from Launceston on B3254
Email: sales@prjengineering.co.uk
Postcode: PL15 7QH

MAIN DISTRIBUTOR FOR

'BRITAIN'S LEADING TRAILER MANUFACTURER'

for Williams Trailers

COVERING CORNWALL AND DEVON

WIDE RANGE OF TRAILERS AVAILABLE FOR HIRE FROM £40 A DAY

EXTENSIVE RANGE OF SPARES IN STOCK COVERING MOST MAKES OF TRAILER

FULLY EQUIPPED WORKSHOP FACILITIES FOR SERVICE AND REPAIRS

LARGE SELECTION OF CHILDREN'S FARMING TOYS INC. BRUDER & ROLLY TOYS

Opening Times:
Mon - Fri 8:30 - 1, 1:30 - 5
Saturday 9 - 12

SALES * HIRE
SERVICE * REPAIRS

JAMES WILLIAMS CARPENTRY

Bespoke Storage Solutions
Window & Door Replacement & Repairs
Kitchens & Bathroom Fitting
Hanging Doors
Plastering Flooring Tiling

We take pride in our excellent reputation to please our customers through hard work, precise workmanship and good housekeeping.

Please check out our website

www.jameswilliamscarpentry.co.uk

T: 01566 248308 M: 074113 77720

Group and their many activities can be found on their website: <http://www.launcestonparishwildlife.org.uk>.

Both events were organised by Jen Bousfield, who even managed to arrange appropriate weather for two very rewarding and enjoyable activities.

Kaye Montgomery



Well, well, what have we here?

And butterflies that flutter in the day

For several years now I have enjoyed watching the butterflies that come to feed from the buddleia bushes in our garden. We have both purple and white buddleia and the white ones are by far the most popular with the butterflies. In a good year for butterflies we usually see plenty of red admirals, peacocks, small tortoiseshells, small and large whites, and earlier in the year, orange tips and the odd brimstone.

In addition to these, this year, during July and August, we have seen speckled woods, painted ladies, common blues, gatekeepers, meadow



Comma butterfly



Silver-washed fritillary

browns, and much to our delight, two butterflies that we hadn't seen before—commas and silver-washed fritillaries. Luckily I was able to capture these on my camera. It is lovely to think that all these butterflies were seen in one small corner of South Petherwin and I'm sure there are some butterfly visitors that we have missed.

If you too love these beautiful creatures I can really recommend planting a buddleia (especially a white one) in your garden and just keep watching. You never know what might turn up!

Wendy Lewis

The Really Useful Page

<u>WHAT</u>	<u>WHEN</u>	<u>WHERE</u>	<u>WHO</u>
Lunch Club	Mon 26th Oct Mon 23rd Nov	Methodist Hall 12.30pm	Wendy Smith 782204
Coffee morning	Sat 10th Oct and Sat 14th Nov	Methodist Hall 10.30am	Tony Smith 782204
Knitting	Most Thursdays at 2pm	West Petherwin Farm	Muriel Parsons 773027
BIMBO's	Every Monday (except B/hols and lunch club dates)	Methodist Hall	Vi Brook 779243
Bell ringers	7pm Mondays	St Paternus Church	Leon Vanstone 773619
Skittles	7pm Tuesdays	Village Hall	Peter Northmore 778744 Vi Brook 779243
Bingo	Last Wednesday of the month 2pm	Village Hall	Pat Locke 774671
Table Tennis	10am Tuesday mornings	Village Hall	Sue Vernon 772640
S. Petherwin Cricket Team	Weekly practice and fixtures	S. Petherwin Cricket ground	07810 493583 07973 909556

Useful Information

The Little Red Bus (Launceston Community Transport Partnership) covers South Petherwin area on Thursdays. For information, ring 777960
Village Hall: To hire hall, contact Sue Vernon 772640
Methodist Hall To hire hall, contact Wendy Smith 782204
Oil Syndicate Contact Sue Vernon 772640

Cornwall Council

Tel 0300 1234 100

Website;
www.cornwall.gov.uk

Email ; enquiries@cornwall.gov.uk

Cornwall Councillor: Neil Burden
01566 782286 nburden@cornwall.gov.uk



Dates for your diary

Sunday 20th September

Harvest Service, supper and auction. 6pm
 St Paternus Church
 Contact Barbara Cobbledick 772559

Sunday 4th October

Harvest Festival Service. 11am. Methodist Chapel
 Contact Tony Smith 782204

Tuesday 6th Oct

Service at 6.45pm followed by harvest supper
 Methodist Chapel. Contact Mary Stoneman 773775

Sunday 8th November

Remembrance Sunday. Meet at war memorial at 10.45 followed by Service in St Paternus Church

Church Services

St Paternus Church (C of E)

Sunday worship at 11.15 (no service on 5th Sunday of the month)

Vicar; Rev Anne Brown 01566 770649

Church wardens ;

Deborah Adams 7744244

Barbara Cobbledick 772559

Methodist Chapel

Sunday Service at 11am

Minister; Rev Jo Smart 782240

Steward; Tony Smith 782204

Community Shop

(In St Paternus Church)

Opening Hours-

Mon - Sat 8am - 12.00

(Not open on Sunday)

Post office open from 17th Sept

South Petherwin School dates

Half Term— 26th Oct—30th Oct

(school starts on Mon 2nd Nov)

End of term- Friday 18th Dec

Tel—01566 776363

New

South Petherwin Parish Council

The Parish Council meets on the second Wednesday each month at 7.30 pm in the Village Hall . It is open for anyone to come and listen in.

Parish Councillors are:

Chairman: Dawn Rogers

Clerk: Alison Barham

Tel; 772596 or email;

parishcouncil@southpetherwinpc.org

Councillors:

Michael Screech, Andrew Hosking,
 Adrian Finnimore, Roger Kneebone,
 Nik Burgess, Julie Butler, Phil Parsons
 John Whiting, Chris Powlesland

Useful Numbers

Emergencies:

Police Ambulance Fire Brigade Coastguard 999

Police (Non emergency-general Enquiries) 101

E; Launceston@devonandcornwall.pnn.police.uk

Environment Agency—Emergency Hotline 0800 807060

South West Water 0800 169 1144

Western Power Distribution - emergency 0800 6783105

Crime stoppers 0800 555111

S. Petherwin School 01566 776363

Citizens Advice Bureau

Contact number ; **03444 111444.**

Lines open 10am - 4pm. Alternatively text the word 'CAB' to 82727 for a ring back service.

The Launceston office is only an outreach centre open once a month. The main office is located in Bodmin.

Access information on **www.citizensadvice.org.uk**