

GEORGE BATEMAN

*Property Maintenance
Small Building Work, Interior & Exterior
Decorating, etc. No Job too Small*

Tel: 01566 773752

SERENE REIKI

Natural healing for the body and mind.

Reiki is an invisible, gentle energy that works by balancing a person's energy system, promoting the body's own natural ability to heal, on all levels.



Japanese Face and Foot massage.

Japanese face massage can improve the appearance of the skin.

Japanese Foot massage the feet are the very foundation for our physical being.

Serene Reiki gift vouchers £25 buy your loved one a very special gift.

Sue Bonsor Reiki Practitioner/Teacher/Master, & Tsuboki Face & Foot Masseuse based in Daws House, Launceston, Cornwall. Call me on 07771 976436.

See me on www.serenereiki.co.uk **Member of the UK Reiki Federation**

Parish Magazine Committee

Helena Northmore (778744 hmnorthmore@msn.com) Helen Masters (775545) Phil Parsons (777179), Cherry Pyke (776998), Sue Vernon (772640), Peter Northmore (778744), Mary Stoneman (773375) Alison Barham (777561)

Advertising rates are as follows, for a full year (six issues): quarter page: £30 half page: £60 — full page: £120. Please speak to Peter Northmore (778744) Personal announcements are free of charge.

Copy for the next issue of the Magazine should be given to a member of the editorial committee not later than **7th January 2015**. *(Please remember to attach your name and telephone number in case of queries.)*

South Petherwin Parish Magazine



Issue no 64

November 2014



HERE WE GO AWASSAILIN'!



Remember how you used to like singing carols? Well plans are afoot to bring back carolling in the village this year, and to make it special we'd like to carry withy lanterns that we have made ourselves, to light our way as we process round the village. Come and join us and make it a great start to Christmas.

Lantern making will be on **Saturday 20th December** in the village hall from 10a.m to 4p.m. Old clothes are essential, and please bring a small torch to fix inside your lantern and £2 towards materials. Wholesome refreshments will be available including hot food for £2.50 and homemade cakes. (Please no unaccompanied children under 9 years old, and no unaccompanied children to be left longer than 2 hours. Adults with or without children welcome.) Last entry to make a lantern will be 2pm.

Everyone wanting to join in the carol singing will meet in the hall on **Sunday 21st December at 5pm** returning by 6.30 p.m. so that those who wish to join the Carol Service in the Church can do so, and take their lanterns with them. If we are rained out on the Sunday please check the village website and water pump for an alternate date. Musicians very welcome to accompany carols. See you all there!! Booking recommended for lantern making; call **Abi 07943 699208**.





New Play Area opened!

The new recreational play area in the school grounds was opened on Saturday 27th September.

This is a working partnership between the Parish Council and school. Parish Councillor Andrew Hoskin opened the play area thanking the funders, Parish Council, PTA, school and volunteers who together made the whole event so successful.



Over fifty children enjoyed the new play area but the skatepark proved to be the centre of activity. Bikes, skateboards and scooters zoomed up and down the ramps.

"Brilliant fun" commented one young user.

Why be a Parish Councillor?

Are you over 18? A UK, Commonwealth or EU citizen? Registered to vote in the Parish or lived or worked in the Parish for the last 12 months? You could be eligible to become a Parish Councillor.

The Parish Council currently has 3 vacancies for Councillors. It is seeking volunteers to be co-opted for a period up to the next elections in 2017. This means you will not need to stand for election at this time. Oh, and you don't have to be a member of a political party.

As long as you are over 18 it doesn't matter how much or how little experience in life you have. Many young people are now engaging with their local community in this way and are finding it a rewarding experience. It is also a useful addition to the CV.

So, however old you are, if you're employed or not, in education, looking after a family, why not contact me for an informal chat to find out a little more.

Alan Brook, Parish Clerk
01566 777183 email: sparishclerk@icloud.com

Good bye to John Atkinson

The South Petherwin Bell ringers would like to thank John Atkinson for all his hard work and support over the past years and wish him well for the future.



John Atkinson receiving an award from the Bishop of Truro in 2012

St Paternus Church



Christmas Fayre

Saturday 29th November 2014
10am-12pm

Tea, coffee, mince pies, Butterfly cards
Raffle, Tombola, Games, cake stall
bric-a-brac

If you are interested in a table for the fayre please ring Barbara on 01566 772559 (evenings)



Don't forget the South Pether win website
Go to www.southpetherwin.com

If you'd like to advertise any item for sale, or celebrate a birthday or anniversary, or just shout about something special please email -hmnorthmore@msn.com or contact any of the magazine committee (details back page)

Noticeboard

The South Petherwin Magazine committee would like to thank all those who have advertised in this magazine during 2014 and wish you a prosperous and successful new Year.

The committee would also like to thank all those who have contributed to the magazine by sending in articles and photo's and the kind volunteers who distribute every issue whatever the weather! A happy Christmas to you and all our readers.



Holly Bennett-Speare (15) Poppy Bennett-Speare (11) and Samuel Shovell (4 1/2) looking very scary trick or treating at Halloween

**Coads Green Amateur Players
Present**

**The Three Musketeers
Written by Hilary Mackelden**

At

**Coads Green Social Centre
On Friday 23rd, Saturday 24th,
Thursday 29th, Friday 30th
& Saturday 31st January 2015**

**All performances start at 7:30pm
Contact Linda on 01566782431 or
email coadsgreenpanto@gmail.com**

to book your tickets.

Adults £5 Children £2.50

**Proceeds to
Tavistock Muscular Dystrophy
& Cornwall Air Ambulance**

Wind Turbine Community Fund Grants

The Community Fund trustees met during October and allocated funds to two applicants. The Parish Church was granted funds towards a secure and stable collapsible table for use after services and fundraising events. South Petherwin pre-school was given a grant towards IT equipment. A third applicant was referred back for further information.

The next round of grants will be early in 2015. Please look out for notices around the Parish and in this magazine. The application process is very straightforward and is open to anyone, individual or organisation, who can demonstrate a need which will promote the Parish or enhance Parish life.

Coffee Morning for Pancreatic Cancer

On a windy day in October half term, Valerie Hoskin opened her house to friends, family and neighbours in aid of Pancreatic Cancer UK. Pancreatic cancer is the fifth most common cause of cancer death in the UK with one of the lowest survival rates. Despite this, it only receives 1% of the total cancer research spend.



Valerie and her family and friends worked hard to provide a successful coffee morning, which was extremely well attended. Apart from refreshments, there was a cake stall, raffle, Phoenix cards, and two excellent mobile stalls run by Valerie's grandchildren Theo and Josie, with guessing games and items to buy. The coffee morning raised a staggering £650. This is not the first of Valerie's amazing charity events, and many thanks go to her for her hard work and generosity in ensuring a successful result.

Alison Barham

Defibrillator News

Following a public meeting in the village hall on 16th October, it has been decided to go ahead with the deal provided by Community Heartbeat Trust (CHT), who also provided the defibrillators in North Hill and St Giles on the Heath. The representative of CHT will be in the village hall on **Thursday 11th December at 7pm** to demonstrate the G5 defibrillator and answer any questions that we have and tell us how to proceed. Please come along and add your support to this very worthwhile project, and see how you can become involved in helping to get this project off the ground, if you should wish to do so.

Sue Vernon 772640

Manager

Required for

South Petherwin Community Shop and Post Office

We are looking for a person with a passion for customer service and an eye for detail, who can help us set up and run the Community Shop and Post Office, which will be situated within the Parish Church in South Petherwin. The shop will be staffed by volunteers from the community.

This is an exciting new project and the successful candidate will be expected to embrace a broad range of responsibilities, including; the day to day ordering and stock management, general Post Office duties which include daily administration of assets, monthly balance, and management of the team of volunteers.

A DBS disclosure is required for this position and training for all Post Office duties will be given. Previous retail / sales / customer background would be beneficial. It is envisaged that the position will be for 20 hours a week, over 5 days, and starting pay will be at the rate of £8.00 p/h.

Closing date November 28th 2014

Please send a CV in the first instance to,

Anne Brown

The Rectory

52 Trelinnoe Gardens

South Petherwin PL15 7TH

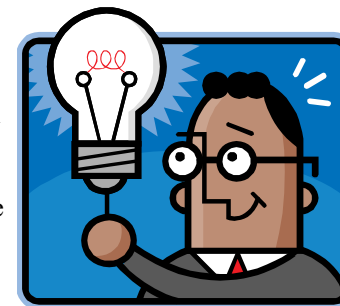
threeeriversteam@btinternet.com

Christmas laughter !

Just before Christmas, an honest politician, a generous lawyer and Santa Claus all got into the lift at the Ritz Hotel in London. As the lift travelled from the 5th floor down to the ground level, one by one they noticed a £50 note lying on the lift floor. Which one picked up the £50 note, and handed it in at reception? Santa of course, The other two don't actually exist

Powerless in Petherwin!

A couple of weeks ago I drove home, anticipating a hearty bowl of second day stew before pantomime rehearsal an hour later. As I approached our cottage, my evident lack of observation failed to notice that the street lights were out. I did notice that the bungalow opposite had romantic candles flickering in the window and two large vans with blindingly flashing lights were parked nearby.



Concerned that these lights would trouble my husband – who was unwell and probably in bed as the house was in darkness – I unlocked the front door and was immediately attacked by a large furry paw. I quickly flicked the light switch – nothing. Now I have no idea why the human reaction is to repeat a pointless exercise, but I admit to flicking it a further four times before realising we had a power cut. Hesitantly poking my way towards the utility room to grab the torch, I tripped over Ripley and fed him with a pouch of meat that slithered down my hand and missed the bowl.

Then, after more inept fumbling, I noticed the torch had gone. Retrieving my mobile, I pressed the screen, gained some brief, feeble light and scaled the stairs to check on my husband. He was missing. After some moments of borderline panic, I noticed my phone had a message on it. Our kind neighbours across the fence had taken him back to their home. Slightly worried about the fate of our tropical fish who were gulping with melancholy doom in a cooling tank downstairs, I headed for the front door, knocking over the torch my husband had sensibly left for me. I lamented over the stew that needed a microwave and felt hungry. The street was fairly lively, everyone chatting about the power cut caused by delays with Western Power who were working on a pole a few doors down. People had pulled together in good wartime spirits, sharing tea lights and giving support.

Arriving at our neighbours' home, I found my husband relaxing in a chair with a glass of water. I was offered wine - which I briefly resisted - and we spent a couple of pleasant hours in jovial comfort, watching engineers dangling precariously from a pole by torchlight. Logically, my husband had left the bedroom light on, so we could see when power was restored. Slightly inebriated, I helped him home, we heated up the stew, I shamelessly missed my rehearsal and the fish survived.



And the moral of the story is

Always remember you are one power cut away from being cold, hungry and tripping over a cat. Western Power have now produced a box of emergency supplies that are recommended in these situations. Wine may also be beneficial.

Cherry Pyke

South Petherwin Pre School 20th anniversary

We would like to thank all the families, children and members of the community who came to help celebrate the 20th anniversary of the preschool on the school site in October. It was lovely to meet Wendy Davey and Wendy Lewis who set up and ran the preschool when it first began. Joy Bloomfield was presented with a gift for all her hard work and dedication to the preschool over the past 20 years. All the photo books and scrap books made interesting viewing, showing how the preschool has changed. In the next few weeks the children will be getting very excited preparing for Christmas, including practicing our next Christmas play, and looking forward to our party with Father Christmas.

Rachel Jeffery



L to r ; Wendy Lewis, Liz Gurr, Joy Bloomfield, Rachel Jeffery, Wendy Davey



Specialist manufacturer of top quality sheds, stables, summer houses, garages, gates and fencing at sensible prices, made to your requirements

Lower Landlake, Launceston,
Cornwall PL15 9LU. Tel-01566 774791



Our experienced dedicated equine Vets now provide a weekly half price visit on Mondays in the Launceston area. We offer a comprehensive, affordable service for all horses, big or small, from stud work to routine vaccinations. Our fully mobile digital X- ray units, scanners and dental tools allow us to bring modern Veterinary skills to your stable.

Phone 01579 382663

Follow us on Facebook for the latest offers and news

facebook



**Your local paper
published
every Thursday**

**Tindle House
Westgate Street
Launceston
01566 772424**

**Also available on-line
www.launceston-today.co.uk**

Castle Veterinary Group Limited

Pennygillam Way
Launceston
Cornwall PL15 7ED
Farm Tel: 01566 772371
Pets Tel: 01566 772211
Fax: 01566 777465



Castle Veterinary Group Limited

Unit 1, Down Farm
Lamerton
Nr. Tavistock
Devon PL19 8QA
Tel: 01822 612779

Open Hours: Mon-Fri 8.30am-6.30pm
(Farm closes 5.30pm) Sat 8.30am-12.30-
pm Closed Sunday Consultations by
appointment only

Open Hours: Mon-Fri 3.00-4.00pm
Closed Sat & Sun

Consultations by appointment only

Nurse clinics: we offer free appoint-
ments with qualified nurses for checks
regarding teeth, weight and adolescence.
Alternative therapy **Acupuncture.**

Puppy parties: a 4 week course for
invited puppies. Subjects covered are
socialisation and diet, vaccinations and
neutering, home care and parasites.

From Dan Rogerson MP

A letter from Dan Rogerson MP to all Parish Magazines in his constituency giving an (non-party political) update on some of the matters that have been raised with him as the local MP



NHS Kernow have announced that they are asking for bids to run Cornwall's out of hours GP contract from 31st May 2015, when the current contract with Serco ends. I want to make sure that the new contract delivers a decent weekend and out of hours GP service for residents in rural communities, as well as avoiding some of the problems people have experienced over the past few years. If you have used the out of hours GP service and have any comments, good or bad, or have any ideas about how the service could be improved, please contact me using the details below

I have also been pushing for NHS England to approve the planned expansion of Launceston Medical Centre. The centre currently has 11 GPs working out of 9 GP consulting rooms and would like to expand to provide services to the growing number of patients. There is a public meeting to discuss the plans at 7pm on Thursday 18th December in the Guildhall at Launceston Town Hall. I will be attending with representatives of NHS England, the local Clinical Commissioning Group and Launceston Medical Centre to discuss how we can best improve the service for those that are having problems getting an appointment or finding a parking space. Please do come along if this is an issue you are concerned about.

Following many complaints from local people, I have been working to crack down on nuisance calls that are pestering people day in and day out, and which can be a menace that put people at risk of scams and fraud just as much as a crook or a pushy salesman turning up at their door. I want to hear from people who are suffering from nuisance calls so I can make sure the Government's Nuisance Calls Task Force know how much of a problem this is for people in our area and to see what I can do to help. If you have been having problems with nuisance calls please



H. R. JASPER AND SON LTD
WHOLESALE BUTCHERS

BOTATHAN ABATTOIR
SOUTH PETHERWIN
LAUNCESTON
CORNWALL PL15 7JL

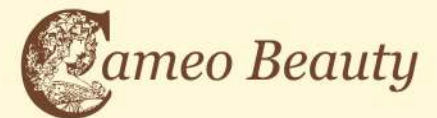
Tel: 01566 772843 (3 lines) Fax: 01566 776648

HOUSE AND GARDEN WOODCRAFT

Multi-skilled tradesman with over 30 years experience: professional carpenter and joiner-general household maintenance-bespoke handmade household & garden furniture-kitchens and bathrooms-small household plumbing jobs



Looking for an honest worker and a reliable friendly service?
If so, call Arthur Philp on
01566775289 or
07890104755



- ✦ Body Wraps
- ✦ Massage
- ✦ Waxing
- ✦ Semi Permanent Make Up
- ✦ Microdermabrasion
- ✦ Ultra Visage Non Surgical Facials
- ✦ Advanced Cosmetic Procedures
- ✦ Eyelash Perming
- ✦ Electrolysis
- ✦ Manicure
- ✦ Minx
- ✦ Eyelash Extensions

✦ Gift Vouchers & Walk-in
Appointments Available

Telephone
01566 775377

Group Travel

Enterprise park, Midway Road, Bodmin, PL31 2FQ

2014 EXCURSIONS

- 6th DEC CLARKS SHOPPING VILLAGE
14th DEC MOUSEHOLE & ANGARRACK LIGHTS with seasonal supper
20th DEC OLYMPIA INTERNATIONAL HORSE SHOW

**LOOKING FOR THAT EXTRA SPECIAL CHRISTMAS PRESENT FOR THE
CHILDREN OR GRAND CHILDREN ?**

WHY NOT BOOK A SEAT FOR THEM TO

HARRY POTTERS WORLD (hogwort express) 18TH FEBRUARY 2015

FOR BOOKINGS AND BROCHURE
PLEASE CONTACT 01208 77989/ 01208 72669

More details on www.grouptravelcoachhire.com

Email: benneymoon@btinternet.com

KJ BROMELL EST. 1974

**PVCu WINDOWS & DOORS CONSERVATORIES KITCHENS & BATHROOMS
GLASS BALUSTRADES BUILDING SUPPLIES**

Kings Hill Industrial Estate, Bude EX23 8QN www.kjbromell.co.uk 01288 357020

- ◆ we manufacture, supply and fit double glazed PVCu windows, doors and custom designed conservatories
- ◆ we design and supply beautiful, functional kitchens, bathrooms and wet rooms to help you create your ideal home
- ◆ open up the view from your patio or balcony with glass balustrading supplied and fitted by our skilled craftsmen
- ◆ at our site in Bude we have a large building supplies shop – open to both trade and the public.

Come and see what we have to offer!

let me know about it by filling out my quick survey online at <http://bit.do/nuisancecalls>

The Government have recently awarded £4.3 million to help fix potholes across Cornwall. One of the most common complaints I hear as local MP is the state of some of our roads, so I am pleased that the Government has responded and is offering this much-needed funding to invest in our roads. Of course money will not be the solution to all of the problems across Cornwall, but if you are having problems with specific potholes on your street or in your area, please do let me know and I will try and get any problems fixed.

If there is anything else that I can help with, please don't hesitate to contact me.

Best wishes, Dan

Dan Rogerson MP

Office Address: 4 Tower Street, Launceston, Cornwall. PL15 8BQ

E-mail: contact@danrogerson.org **Telephone:** 01566 777123

Harvest Celebrations at the Chapel

The Chapel was beautifully decorated for our well attended morning service held on Sunday 5th October. It was led by our Guest Preacher, Mr Richard Uglow from Egloskerry. He gave us a challenging talk, one of his points being the danger taken up with worldly possessions and good times, instead of following in God's way and will. We sang some lovely traditional Harvest hymns accompanied by Mrs Mary Stoneman on the organ. A retiring collection was taken for 'All We Can' (Methodist Relief & Development Fund)

On Tuesday evening our service was led by Rev Eleanor Reddington who gave a short talk on seeds. The seeds we grow in our lives; we should be sharing and showing these as kindness, smiles and love. The organist was Mr Gordon Maunder. Over 50 people then sat down to enjoy a delicious Harvest supper which had been prepared by Joan Whale and Mary Stoneman and been provided by Chapel members and friends. The hall was full of chat, laughter, fun and fellowship. Joan and Mary are extremely grateful to all the help they received from the willing band of helpers, all of which contributed to a very successful Harvest supper.

Mary Stoneman





South Petherwin



www.thelittlebuttonshop.co.uk

- Fabrics and Felt
- Buttons and Beads
- Ribbons and Trims
- Jewellery Making
- Haberdashery
- Gifts and Cards

**NEW
OPENING
HOURS**

- Bike Parts & Tools
- Bags & Clothing
- Locks & Security
- Pumps & Saddles
- Sports Nutrition etc.

Monday - Friday 09:00 - 17:30
Closed Saturday and Sunday

Tel: 01566 774428

LOGS4YOU



**Seasoned hardwood logs
delivered free to your door.**

**Satisfaction guaranteed with the
quality and quantity of wood. Various
sizes of load available (Also nets @
£3.50 - free delivery on 5 or more
nets)**

**Friendly and reliable service
Call 07821 879106
01566 782796
for more details**

**HIRST CONSTRUCTION Ltd
HIRST ENVIRONMENTAL SERVICES Ltd**

Week St Mary, Holsworthy

SEPTIC TANK CLEARANCE/

installation of all septic/ treatment
plants. Blockages.

Bedding sand (bulk)-plant hire/skips

Mini digger work/groundworks.

Free estimates

SEASONED WOOD LOGS



1/2 load softwood
only £70. **Delivered
free to South
Petherwin Area**

www.hirstconstruction.co.uk
01288 341095/07836533535

Jonathan Blake

Money Management

**Jonathan Blake lives in South Petherwin and offers personal service and access
to uncomplicated independent financial advice.**

Jonathan Blake Money Management Limited
Unit 1, Holwood Business Centre Blunts, SALTASH
Cornwall PL12 5DW

Tel: 01752 851748 Mobile: 07970 011651

E-mail: info@jbmmml.co.uk
www.jonathanblakemoney.co.uk

Jonathan Blake Money Management Limited is authorised and regulated by
the Financial Conduct Authority.

Ruby's Garage



Car, 4x4 & Light Commercial

Sales, Service & Spares

Your local family owned independent garage for over 40 years
Specialising in advanced vehicle technology

- Servicing and MOT facilities
- Workshop equipped with latest all makes Diagnostic Equipment
- Competitive prices on Tyres, Batteries and Clutches
- Specialist in 4x4's with wide range of spares currently in stock
- Suppliers of new and used Cars, 4x4's and Light Commercial
- Full bodyshop facilities including insurance work carried out
- Air Conditioning checks and servicing carried out

For more information or advice, contact us by the following:
TEL: 01566 782402/782536 FAX: 01566 782741
e-mail: brubys@aol.com or visit us at www.rubysgarage.co.uk

Winter when we were young

A villager recalls a winter of over 50 years ago-

Three of us would walk from Dawes House to school. I remember one year when the snow was thick on the road with freezing temperatures. We trudged up the hill towards school. As we came to the Drinking Trough (granite trough beside the road where the horses used to stop to drink) we would stop and admire the long glistening icicles hanging down from the rock face.



15%
Service
discount
for our local
customers

We are celebrating our 15th year as ESG Boilercare and our 15th year as part of the South Petherwin community.

And with no plans of going anywhere, you'll be pleased to know we'll be keeping you warm for many winters to come.

Paul, Maggie and the team.

Tel: 01566 782 789
www.esgboilercare.co.uk

Services & Repairs - Oil Boilers & Cookers - Breakdowns repaired in one visit



The following letter is from Mick Towers, regarding an item in the last issue about the village telephone box. We have subsequently learnt that our box is not on the list for decommissioning but Mick raises an interesting idea.....

Hello

I only moved into the village last month so I can't really comment on whether or not the phone box should be disconnected. However, I've lived for the last ten years in a village in the Midlands which took the decision to buy their box for £1. Like numerous other villages in the vicinity we decided to turn it into a 'Library Box'. Someone took the responsibility for fitting wooden racking into the box and one or more others decided that they would keep it tidy and clean the windows etc.. Villagers filled the box with their unwanted books, borrowed books (sometimes keeping a book if they wanted too, after all it was not a 'lending library'). It was very successful in its own small way. Things like this are not earth shattering, but in a small village it's often the small things that help to maintain a sense of community.

Mick Towers.



And an anonymous letter regarding access to the new play area in the school grounds

Hello

Recently an unsigned notice has been put up at the entrance to the new Parish play area. This designating the use of the play area to times when pre-school and school children are not using it. This limits the use of the play area for children who do not attend the Parish pre school or school. There are those living in the village that may have caring responsibility for grandchildren for instance. For them, in the shorter days during term time, the playground is effectively out of bounds.

I understand the Parish Council are to discuss this at a future meeting but it is clear that something which was meant for Parish use is now only available at times decided by the school. I also believe the notice was placed there as some adults and younger children were disrupting school children in their classrooms when accessing the playground. Not to mention bringing dogs on to the premises.



I fully understand the need for the school and pre school to protect and be seen to be protecting children in their care. Ofsted, as well as parents, would probably have quite a bit to say if there was free access. I wish the Parish Council well in their deliberations but fear there might not be any option to that currently in place. Unless the community fund could be put towards a fence dividing the play area from the school playground.

A grandparent



South Petherwin WW1



Remembrance Sunday 2014

South Petherwin fell silent at 11am on Remembrance Sunday as traffic was halted on either side of the war memorial. A short Service was conducted by Rev Eleanor Reddington assisted by Dr Brian Davis. Peter Bailey read out the names of all the fallen from the war memorial; where they were had lived in the Parish, and where they had died in service. Roger Parsons laid the Parish wreath and Alan Brook laid a wreath on behalf of the family of Ronald Creber.



Approximately fifty people attended the service and many Parishioners commented on how moving the service was. Helen Masters said 'It was great to see so many people at the service from all walks of life and all ages, toddlers to granddads, all standing together paying homage to the fallen. This years service was very moving and emotional.'

Drivers Pay Respect.

The positioning of the war Memorial means holding up the traffic at both ends of the village for the duration of the Service on Remembrance Sunday. For the last two years I have done this by the pump. I was told to expect a little flack and perhaps some rudeness, with stories of revving engines from cars waiting to get through. This has not been the case. I try to position myself to give people the opportunity of going to Launceston via Landlake and everyone has understood. The one that stands out was the delivery driver, no doubt on a tight schedule, who needed to get to Tiny Meadows. He was understanding and waited with his engine turned off, until the service was over. Thanks to all of them for their tolerance in a brief annual event which is of great significance to many people.

Peter Northmore



NEVILL HOVEY & CO LTD
CHARTERED ACCOUNTANTS

Tim Smith FCA CTA

Southgate Close, Launceston, Cornwall PL15 9DU

Telephone: (01566) 772109 Fax: (01566) 772072

Email: tim@nevillhovey.co.uk

www.nevillhovey.co.uk

Adrian Davey Painting & Decorating

Exterior & Interior Painting, Wallpapering

Home 01566 780477 Mobile 07729500390

NIC PARKER



Mobile
hair-
dresser

Fully Qualified
over 20 years experience
Competitive rates
Ladies, Gents and Children



**Tel; 01566 772393
Mob; 07816 183125**

36 Trelinnoe Gardens South Petherwin



Fully Insured Lady Gardener
RHS Level 2 Certified

**Do you need extra help to keep
your garden just the way
you like it?**

Whether it's regular appointments or a particular garden project, I offer:
Planting and care of beds, border & Containers, design and re-design ideas, weeding, digging and general tidying, pruning and cutting down, lawn and hedge cutting

07968 170130

STIR IT UP!

Traditionally the last Sunday before Advent, falling this year on November 23rd, is Stir Up Sunday, said to have been introduced by Prince Albert, husband of Queen Victoria (along with other seasonal traditions such as Christmas trees).



Stir Up Sunday is when you should prepare your Christmas Pud, and everyone in the household should have a turn at mixing it and have a wish – thus the name! In recent times, two-thirds of British children surveyed, revealed that they had never experienced stirring Christmas pudding mix, so why not have a go this year and get everyone involved?

Alison Barham

News from SPAG

Joanne's greenhouse remains full of cape gooseberries and baby aubergines, other plot holders have a fine selection of greens to take them through the cold dark months, a few parsnips and carrots are staying in the cold earth until Christmas, jam jars saved through the year are stuffed with colourful chutneys, while demijohns bubble away in quiet corners.



Autumn is here and the lashing November rains have even put paid to our scheduled big clear up, however the pleasurable occupation of reflecting on the year and making plans by the fireside begins. If with feet up, listening to the sweet tones of Monty Don and sipping on a neighbour's rhubarb wine you feel it's your year to have a go, we have plots available; quarter, half or full size. Secure a plot now for £5 or £10 depending on



the size so that you can make preparations before March/April when our full year begins. For enquiries please call Abi 07943 699208, or Joanne 01566 775494 or email southpetherwinallotments@gmail.com

A Trip to the Battlefields

In July, myself and a select group of students from Callington Community College went on a trip, I will always remember; The World War One Battlefields Trip. We went to Belgium and the Somme regions of France. It was a totally life changing experience and if anyone has the opportunity to do it then I recommend it highly. The week was a rollercoaster of emotions ranging from awe, to sadness, to appreciation and happiness, but worth every emotion.



Eleanor at the Menin Gate

Before each day I would check the booklet that Phil Parsons gave to me before we left and I tried to search for the men from South Petherwin, the main person being Fred Jasper. This was an amazing thing to do as it made the experience so much more close to home and both personal and emotional. We travelled to so many places, and I partook in many activities which have altered my views in ways which were previously unimaginable. I feel like a different person after reading my poem at Theipval memorial, and laying a wreath in a ceremony at the Menin gate, and creating a sculpture which will be used as part of a monument. This trip was one of the most amazing experiences I have ever had and I will never forget how close I felt to the men who sacrificed their lives for us.

Eleanor Maunder

Remembrance Service



On 18th January 2015 at 6pm in the Parish Church, there will be a short service of remembrance for Arthur Edward Wannacott on the centenary of his death.

His commemorative plaque will be added to the First World War memorial in the Church as we continue to mark the 100th anniversary of the war and those who died from our community. Arthur was 22 when he died and came from Dawes House

Rev Anne Brown

School News

We are back raring to go after half term, looking ahead towards a busy and productive run up to Christmas. We have four new chickens, two blue Barnvelder and two orange and black young chickens. Mr. Gray has picked these for their eggs (fingers crossed) and placid natures. The children are now deciding which class has which chicken and what their names will be.



Our next WOW week will be D.T (design technology) based and in the style of "The Apprentice". Each class will be given £50 and they will spend the week designing and making items to sell at the Christmas Fair. The aim is to make the largest profit. Come along on December 9th 6pm-8pm to see how well they have done. There will also be other stalls including; toys, jams, soaps jewellery, The Body Shop, Phoenix cards, refreshments (e.g. jacket potatoes, soup, mince pies) gifts for parents and a craft room.

Our annual Christingle service will be held at the Methodist Chapel on Friday December 19th at 1.30pm. Everyone is welcome. We hope you all have a very happy and peaceful Christmas.

Christmas Services in South Petherwin

St Paternus Parish Church

Sunday 21st December 6.30pm Carols by Candlelight.

Parish Carol Service. Bring your own light or lantern and help create the Christmas atmosphere. Mulled wine and fruit punch after the Service

Wednesday 24th December. 4.30pm

Christmas Eve Service. All welcome to hear the story of the nativity and share in the spirit of Christmas

Methodist Chapel

Friday 19th December. 1.30pm Christingle Service.

Join with the children from SP school to welcome the light of Christmas



And a message from Rev Anne Brown -

If anyone wishes to receive home communion or would just like a chat please ring me on 01566 770649 and I will arrange a visit

A letter from Rev Eleanor Reddington, Methodist Minister at South Petherwin



Dear friends,

I don't know about you, but I'm getting confused – or maybe that should just be I'm confused. As soon as the children went back to school, the Christmas cards came out on display, closely followed by Christmas special offers. For me, September saw the start of Harvest Festival services, which continued into October, where they were joined by Church Council meetings (business meetings which have to be held then). Now, I'm just beginning to think about Remembrance Sunday, and Helena reminds me it's my turn to write this newsletter, which usually has a Christmassy theme.

Sitting down to write this reminds that I shall soon have to write our Christmas newsletter. One of the joys of Christmas is that we can catch up with friends in different parts of the country, and even world. A few months ago I finally succumbed and joined facebook – mainly to find out what sea and river swims have been organised by a group locally. However, I've also been able to keep up to date with my youngest niece who has just arrived in Madagascar on board the African Mercy – one of the Mercy Ships. It still seems incredible that within a few minutes of her posting something on facebook we are reading it here.

That has set up 2 thoughts in my mind –one is that, good though social media is, we should never let it take the place of talking to people and keeping in touch with them. As Christmas approaches don't forget to send those cards to people you may not see very often, and make time to enclose a letter with it. I know I still enjoy reading letters from friends, and a letter from us could be just the thing to cheer someone up, or help them though a difficult time.

The other thought: "I wonder how Mary and Joseph would have announced Jesus' birth on Facebook?" It's already conjured up a few amusing pictures in my mind, so I'll leave you to think of some ideas, and simply remind you that, as Christmas is Jesus' birthday, shouldn't we be remembering and worshipping him on it? Happy Christmas.

Eleanor

Rev Eleanor Reddington Tel 01566 782240 e875@btinternet.com



Willy Maybury very sadly passed away on October 25th 2014 after a mercifully short illness. He was very kind and a true gentleman. He will be sorely missed by his friends and neighbours. Our condolences to Lynda and all his family.



GAS – OIL – LPG
BOILER INSTALLATION /SERVICE
& REPAIR - OIL TANK INSTALLATION
GENERAL PLUMBING
BATHROOMS - WET ROOMS










ALSO **TEL: 01566 880 123**

COME VISIT OUR
BATHROOM SHOWROOM
AT KENNARDS HOUSE (OPPOSITE TRETHORNE LEISURE FARM)

LOVATON BOARDING CATTERY
 Feline Advisory Bureaux Listed Cattery
 Daws House, Launceston, PL15 7JF
 Home from home holiday for your cats, run by a qualified
 Veterinary Nurse; pick up and delivery service available.
 Modern purpose built PVC cattery, deluxe heated penthouse chalets
 Please ring Andrea for more information on 01566 778501 or email
andrea@lovatoncattery.co.uk or visit www.lovatoncattery.co.uk



CHRIS LYLE PLASTERING
& PROPERTY MAINTENANCE
TELEPHONE: 07861783082
www.chrislyleplastering.co.uk chrislyleplastering@yahoo.co.uk

As your local, time served plasterer I offer a full range of plastering services that
 include: Traditional plastering-Plasterboarding-Lime plastering-Tyrolean
 application-External render-Internal and external painting-Damp proof plastering-
 Dry lining

25 YEARS EXPERIENCE—FREE QUOTATION—RECOMMENDATIONS
AVAILABLE—MEMBER OF GUILD OF BUILDERS & CONTRACTORS



Hine
LANDSCAPING & GARDENING

TRECROGO CHAPEL HOUSE
 SOUTH PETHEWIN, LAUNCESTON
 07967387748
hinelandscaping@yahoo.com

Mobile Foot Care

Sally Isaac S.A.C. Dip. FHPT/FHPP

Gentle and professional
 foot care in the comfort
 of your own home

If you suffer discomfort from
 corns, callus, ingrown toenails,
 cracked heels, thickened nails
 etc. or just have difficulty cut-
 ting your toenails give me a ring



Telephone Sally on 07961 076 168



R Mears & Sons
Chimney Sweeps
 Established over 30 years

Vac Brush. Full CCTV investigations.
 Pots, Cowlings & Bird Protection fitted.
 Solid Fuel Appliances, Rayburns,
 Woodburners, Stoves etc serviced.
 Fully Insured.

Tel: 01840 261221
 Mob: 07737 533392
www.sweepcornwall.com



Parish Diary - Regular Events

Organisation	Details	Contact
Parish Council Meeting	Second Wednesday in the month 7.30 pm, Village Hall	Clerk: Alan Brook 777183
St Paternus C of E	Service 11.15 am	Wardens: Barbara Cobbledick 772559 Debbie Adams 774244
Methodist Chapel	Morning Service 11 am	Steward: Tony Smith 782204
Prayer Group	Every other Wednesday	Muriel Parsons 773027
Lunch Club	Last Monday in month (unless Bank Holiday)	Tony & Wendy Smith 782204
Knitting	Most Thursdays 2 pm, West Petherwin Farm	Muriel Parsons 773027
Bones In Mind Beats Osteoporosis	Every Monday (except when Lunch Club or Bank Holiday)	Vi Brook 779243
Pre-School	Mon-Fri 9-12am, lunch club 12-1pm; afternoons Mon, Tues, Thurs 1-3pm; toddlers Fri 1.30-3pm (term time only)	Rachel Jeffery 779476
Bell Ringers	Mondays, 7.00 pm practice	Leon Vanstone 773619
Skittles	Tuesdays 7 pm, Village Hall	Vi Brook 779243
Bingo	Last Wednesday of each month, 2pm Village Hall	Pat Locke 774671
Mobile Library	Tuesdays 12.25-12.40 pm Village Pump	Alternate Tuesdays

The Little Red Bus (Launceston Community Transport Partnership) covers South Petherwin area on Thursdays. For information, ring 777960

Village Hall: To hire hall, contact Sue Vernon 772640

Methodist Hall To hire hall, contact Wendy Smith 782204

Oil Syndicate Contact Sue Vernon 772640

YOUR PARISH COUNCIL

The Parish Council meets on the second Wednesday each month at 7.30 pm in the Village Hall. It is open for anyone to come and listen in.

Parish Councillors are:

Chairman: John Whiting

Clerk: Alan Brook 777183. spparishclerk@icloud.com

Councillors: Phil Parsons, Michael Screech, Andrew Hosking, Dawn Rogers, Adrian Finnimore, Roger Kneebone

Cornwall Councillor: Neil Burden 01566 782286 nburden@cornwall.gov.uk



The first step for bright young things.

Our experienced staff develop “*warm and caring relationships with the children that foster a general sense of trust and well-being*” and “*help to promote the development of early communication skills and a positive attitude to learning.*” Ofsted

Monday, Tuesday and Thursday: 9am – 3pm

Wednesday and Friday: 9am – 1pm Lunch Club: 12 – 1pm

£7.50 half day / £15 full day

Toddler Group, Friday: 1.30pm – 3pm (the first session is free)

We now have places for funded two year olds.

For more information call Rachel on 01566 779476

Charity Number: 1024955

David Elcock

PLUMBING & HEATING

Tel: 01566 774249

Mobile: 07977 041905

Trevalle,
Daws House,
Launceston,
Cornwall
PL15 7JE



Andrew Hosking

Springfield
Tregaller Lane, Daws House
Launceston, Cornwall
PL15 7JH
Tel 01566 772537/
775818

Designer & Maker of
Quality Furniture & Joinery



**For Williams
Trailers**

**DISTRIBUTORS COVERING
CORNWALL AND DEVON**

**SALES • HIRE
SERVICE • REPAIRS**

'OVER 100 TRAILERS IN STOCK' www.prjengineering.co.uk



ENGINEERING LTD

TEL (01566) 782794

TEL (01566) 782794

Do come and see our extensive range of Children's Farming Toys
THE TRAILER CENTRE, Nr LAUNCESTON PL15 7QH
(4 MILES FROM LAUNCESTON ON THE B3254 TOWARDS LISKEARD)

JAMES WILLIAMS CARPENTRY

Bespoke Storage Solutions
Window & Door Replacement & Repairs
Kitchens & Bathroom Fitting
Hanging Doors
Plastering Flooring Tiling

We take pride in our excellent reputation to please our customers through hard work, precise workmanship and good housekeeping.

Please check out our website

www.jameswilliamscarpentry.co.uk

T: 01566 248308 M: 074113 77720

Parish Diary - Special Events

<i>date</i>	<i>Details</i>	<i>Contact</i>
Sat 29th Nov	Christmas Fayre. 10-12. St Paternus church	Barbara Cobbledick 772559
Sat 6th Dec	Christmas coffee morning. 10.30 Methodist Hall	Tony Smith 782204
Tues 9th Dec	School Christmas Fayre 6-8pm	SP School 776363
Thurs 11th Dec	Defibrillator meeting. 7pm. Village Hall	Sue Vernon 772640
Mon 15th Dec	Christmas lunch club. 12.30 Methodist hall	Wendy Smith 782204
Friday 19th Dec	Christingle Service. 1.30 Methodist Chapel School breaks up	SP School 776363
Sat 20th Dec	Lantern making. 10-4pm Village Hall	Abi Caine 07943 699208
Sun 21st Dec	Carol singing around the village. Meet 5pm. Village Hall.	Abi Caine 07943 699208
Sun 21st Dec	Parish Carol Service. 6.30. St Paternus Church	Anne Brown 770649
Tuesday 6th Jan	New school term begins	SP School 776363
Sat 10th Jan	Coffee morning. 10.30 Methodist Hall	Tony Smith 782204

Recycling Collection dates; Both rubbish and recycling are collected on a **WEDNESDAY**. Rubbish is collected every week; recycling (and garden waste for subscribers) on alternate weeks. This year our collection dates are unaffected by Christmas/New Year holidays. Next rubbish collection dates are 26th Nov 10th & 24th Dec & 7th Jan. Recycling on alternate Weds **Helpline number-; 0300 1234 141**

SOME USEFUL TELEPHONE NUMBERS

Emergencies: Police Ambulance Fire Brigade Coastguard 999

Police (Non emergency-general Enquiries)

101

Environment Agency—Floodline 08459 881188

Environment Agency—Emergency Hotline 0800 807060

Transco (Gas Emergency Service) 0800 111999

South West Water 0800 169 1144

Western Power Distribution (new emergency no) 0800 6783105

Crime stoppers 0800 555111

Citizens Advice Bureau Launceston (9am-noon) 08444 994188

Community Police Officer Clare Danson 01566 771419

Rev Anne Brown—Vicar (Cof E) 01566 770649

Rev Eleanor Reddington— Methodist Minister 01566 782240

Easy Rider at 86! or A Cup of Tea with John Edwards.

HN; *How long have you lived in the Parish John?*

JE; Well, I was born in Launceston in 1928 but my family moved to Trecrogo End Lane when I was six. Since then I've always lived in the Parish. Been here all my life pretty well.

HN; *Did you go to school in South Petherwin?*

JE; I went to the National School in Launceston until I was six and then the village school in South Petherwin. That was when it was on the old site and the headmaster lived in the big house by the Church. There were about ninety children in the school in three classes. Then in the war-time we had about thirty more evacuees. I stayed there until I was 13 and then left to work at Honiton Farm.

HN; *Did you stay in farming?*

JE; No, after the war I worked in the building trade with my father. He died in 1958 and I carried on working for myself. There was always plenty of work, repairing farm buildings and such like. Towards the end I had a small holding too and repaired cars. Infact you could say I turned my hand to most things.

HN; *And what about girlfriends when you were young?*

JE; Aww I don't really remember. I married Phyllis in 1955 and we've been together ever since. (*Phyllis ; he had to many girlfriends to remember them all!*)

HN; *You must have seen a lot of changes in the village?*

JE; Yes quite a few. I remember when there was a busy shop, a petrol pump and a cobbler. And maybe other things I forget. But the village seemed much busier back then. People walking round and chatting more. But not all the changes have been bad. You just have to accept them really. I used to go to Church a lot and was a Church warden and a sidesman but I don't go now because I don't believe in money changing hands in a church. Don't like the idea of it. That's just the way I was brought up I suppose.

HN; *I hear you were on the Parish Council?*

JE; Yes I were on the council for 41 years and Chair for some of that. It were my idea to have the public toilets near the village shop, and the floodlighting in the church yard. I'm proud of that, and when we won the battle to stop a sewage site being built at the back of Trelinnoe Gardens.



HN; *I saw you at the defibrillator meeting in the village hall recently.*

JE; I think it's a good idea. I first saw one at the Royal Cornwall Show. It's worth having, even if it only saves one life. Anyone could use it, it's easier than you'd think. They've done a good job those people who are trying to get one for the village.

HN; *How do you spend your time John now you've retired?*

JE; Well I love my motorbike. It's a Suzuki 250 and I still ride it. I've had a motorbike since I was 17. I bought the first one for £6 and it was a year older than me (made in 1927!) And I belong to the 'Old Cornwall Society' and like their meetings in Launceston. And I watch sport on telly – boxing, horse racing anything really. Oh and we don't miss Downton Abbey if we can help it.

HN; *And what makes you happy?*

JE; Still being able to walk around at my age and having my health. And still being together with Phyllis after 59 years!



South Petherwin Band of Bell Ringers

BEL WRINGING

Well at least it got your attention ! Do hope you continue to read on a bit. Our Vicar, Anne Brown took the Chair at the recent AGM, when Leon Vanstone was elected Captain and Nigel Parker as Vice Captain. Sue Vernon and Mike Ryalls were re-elected as Hon. Secretary and Treasurer.

Hopefully, you will continue to hear the Church Bells every Sunday morning (10.45[ish] to 11.15) and on Monday evenings, practice night, between 7.00 and 9.00(but no later)! Many people develop an interest in bell ringing from hearing them, and if you would like to come along then do so on any Monday evening and see if you enjoy it. Leon will be holding 'Taster' sessions on the first Monday evening of each month between 7.00 and 7.30 under the supervision of experienced ringers.



The Band has a wide range of both Lady and Gentlemen members, from beginners to those who have been ringing for fifty years, and some 'returners' after absence for various reasons. It is fun (but has a serious side as well) as ringing requires such skills as concentration, observation, and a keen ear, but above all it is good exercise. Beware, bell ringing is addictive! We all make many mistakes, but there is always plenty of help around to aid improvement. Above all, it is fun, and when all six bells are rung well it is a truly great experience. To find out a little more contact Sue Vernon on 772640, or just come along to and through the West Door on a Monday evening and you will be made most welcome.

Nigel Parker