

Winds of Change

South Petherwin Launceston,
PL 15 7LP
Tel: 01566776988 Mob: 07768 116691

The Inn place for all your
catering requirements

An extensive bar menu 7 days a week serving a full range of home
cooked meals from ham salad to steak with all the trimmings.
After a day out why not come on in for a plate of fresh cod n' chips.
Serving **REAL** food and using fresh local produce.

Open Daily for Lunch and Evening Meals

Sunday Carvery 12 noon to 2:30 pm

Booking advisable for Sundays Remember, you meet the best people
in The Winds of Change.



We need your views!

The Magazine depends on contributions from readers. We welcome letters or articles on any subject connected to the Parish. Please email your ideas, experiences or opinions in less than 500 words to hmnorthmore@msn.com. Alternatively contact any of the committee below.. We also welcome any jokes or funny stories!

Parish Magazine Committee

Helena Northmore (778744 hmnorthmore@msn.com) Helen Masters (775545) Phil Parsons (777179), Cherry Pyke (776998), Sue Vernon (772640), Peter Northmore (778744), Vanessa Elcock (774249) Mary Stoneman (773375)

Advertising rates are as follows, for a full year (six issues): quarter page: £30 — half page: £60 — full page: £120. Please speak to Vanessa Elcock (774249). Personal announcements are free of charge.

Copy for the next issue of the Magazine should be given to a member of the editorial committee not later than **5th July 2014**. (Please remember to attach your name and telephone number in case of queries.)

South Petherwin Parish Magazine



Issue no 61

May 2014

Church Warden Resigns at St Paternus Church.



Presentation in the Church

After nine years as Church Warden at St Paternus Church, Valerie Adams stepped down last month, with a mixture of sadness and relief. She said 'It has been an interesting and at times challenging nine years but an enjoyable experience. However my health has made it more difficult recently and the time has come to hand over to someone else'.

The new Church Warden is Barbara Cobbledick. She joins Deborah Adams who is starting her ninth year as Church Warden. Valerie will continue as a worship leader and a committed member of the Parochial Church Council. The congregation presented Valerie with a bouquet of flowers and a Dartington vase as a token of their gratitude and affection.



L to R Valerie Adams, Rev Anne Brown, Barbara Cobbledick and Deborah Adams

Defibrillator Demonstration and Health Check Evening



Sue with a defibrillator

In the last issue it was suggested that having a defibrillator in the village would be a great asset for residents in South Petherwin. The response to this has been positive but it's become clear that many people believe that you need special training to use one.

This is not so, as the defibrillator 'talks' to you (rather like a satnav) and tells you what to do. So we are planning a demonstration of one, in the village hall, together with blood pressure and blood glucose checks for anyone who would like them. We expect this to happen one evening in the last week of June, but at the time of going to press we are still waiting for a confirmed date. There will also be an opportunity to question the health care professionals on related matters, and tea coffee and biscuits will be available.

Do keep your eyes open for the posters that will be put up nearer the time, giving the exact date – not only will you see how easy it can be to help save someone's life but you can also get yourself checked out without having to queue in the surgery!

Sue Vernon

And Whitstone have one already.....

As stated above, South Petherwin Parish supported by the magazine, is investigating the possibility of installing a defibrillator in the village. One was recently installed at Whitstone and on behalf of the magazine, Phil Parsons contacted Parish Councillor Richard Horne. Their experience was that support grew as information spread, particularly about ease of use, and benefits. Whitstone was also able to obtain part funding from the British Heart Foundation, which might be a possibility for South Petherwin. Once installed it is owned by the Parish. It needs to be placed in an obvious location, with notices announcing its presence and site.

A training day was held in Whitstone attended by 35 people but training is not essential as Sue Vernon explains above. Thankfully Whitstone have not had to use theirs yet and it is one of those devices which might never be used, but you never know!

Peter Northmore

+++++Stop press+++++Fire at Honiton Farm

Several fire engines attended a serious barn fire at Honiton farm on Monday 12th May. The alarm was raised at 11am and the fire quickly took hold. In total 60 fire crew were at the site, using special breathing apparatus and two hose reels supplied by a water relay from a hydrant. Fortunately no individuals or animals were hurt but water supply in the surrounding area was affected for a few hours. This is the third barn fire in the Parish within two years.

Congratulations to

Timothy Goodman and Taymara Cheeseman,



who were married in South Petherwin Methodist Chapel in April, and honeymooned at Lake Garda in Italy. Timothy works on the family farm at Brockle, but will make his home with Taymara in Launceston. We wish them a long and happy marriage.

Do you like gardening? Got a bit of time to spare?



Becky Little is looking for volunteers from the community to help her class 1 children with their gardening project.



Or what about knitting? Calling all local knitters!



Becky Little would also like to make a tee pee for her Class 1 children using knitted squares. She would welcome some help from local knitters.

For more information about either project ring
South Petherwin school on 776363

If you'd like to advertise any item for sale, or celebrate a birthday or anniversary, or just shout about something special please email -hmnorthmore@msn.com or contact any of the magazine committee (details back page)

Noticeboard

Do you need a cleaner?

My name is Kath and I live in South Petherwin.

I can do ironing, hoovering and all types of cleaning. I can be flexible with hours and have good references.



If you need a one off clean, or help on a regular basis, give me a ring
01566 772608



South Petherwin Website

Catch up on all the latest parish news and information! Visit the website at
www.southpetherwin.com.

FOR SALE

Greenhurst Ascot Awning
2.5 m by 2.0 m.
Cost New £199.
Approx 3 yrs old but only used for 1 ½ summers.
Any sensible offers considered.
Tel 777862.

A warm welcome to everyone who has recently moved into the Parish.

*We would love to see you at any of the village events and local clubs
(see page 12/13 for details)*

Or if you need any information to help you settle in, please ring any of the magazine committee on the back page. If we can't help we'll probably know someone who can!

Community Shop

Many thanks to those who completed the recent questionnaire about the community shop. In the end we received 118 completed questionnaires of which 14 % said they would use the shop daily and 41% 2/3 times a week. Only 2% said they would never use it. Over all 93% thought having a shop in the village was either highly or very important.



It is hoped that once the report is finalised and it is approved by the diocese, we will be able to access the funds to commence work. We would also like to thank all those who came to the community shop tea party, which was a great success with over 50 people enjoying some of the products we hope to stock in the shop.

We will be holding a meeting for those who were interested in working on the steering committee. If you are willing to be part of the team that will see this project come to fruition, why not come along, the meeting will be at -

7.00pm on Tuesday 27th May in the church.

For any further information contact Anne Brown on 01566 770 649

South Petherwin Parish Council AGM

Wednesday 11th June at 7.30

Village Hall

Contact Alan Brook for further information

email spaparishclerk@icloud.com or ring 777183

South Petherwin Bell Ringers Success

On 5th April, months of knockout competitions resulted in South Petherwin ringers winning a cup in the Charles Lyle cup, a competition organised by the Tamar Valley Guild of Ringers. They came first in the B section, and second in the Open section, the final rounds being held in Marhamchurch.

Ringers at South Petherwin and St Mary's in Launceston share practice nights and support each other in competitions and at other ringing events.

Anyone wishing to 'have a go' will be very welcome on Monday evenings at South Petherwin or Thursday evenings at St Mary's. Both towers have very good teachers and it is always good fun – you'll be surprised how quickly you can learn!!



For more information ring John Atkinson on 774264



Memories Day

The South Petherwin World War 1 Memory Day held at the Methodist Chapel Hall in April proved to be a great success. The event was organised by the South Petherwin WW1 -100 committee, including Peter Bailey, Roger Pyke and Phil Parsons. From 10am to 3pm a steady stream of visitors of all ages were fully interactive with the posters, memorabilia, maps, letters and personal histories of the Petherwin local lads whose names are recorded on the war memorial.

Andrew Fuge, local postman, brought along a dented cigarette case which had belonged to his grandfather Albert Davey. As a serving soldier in the Worcester regiment his life was saved when shrapnel hit his chest pocket where he kept his cigarette case. (see photo below)

Helen Masters commented on how the event brought to life the names on the war memorial, "I go past the memorial most days and see the names. It has been really interesting learning about who they were, where they lived, served and died. These are local names and families and the men were so young. A really interesting event". The event organisers were overwhelmed by the memories and stories of young men who found themselves part of a global event. Some returned, but for those young men whose names are recorded on the war memorial, their lives became part of the long list of the fallen, a long way from home, serving their country.



The memory day helped to gather some new information but more importantly it brought to life the individual stories of the Petherwin Boys on the war memorial. The group would like to thank all those who attended the day and the Methodist Chapel Coffee Morning Group for allowing the event to join with them along with support from the Parish Council, Parish Magazine and the Wind Turbine Fund.

For more information and stories from the memory day and the lives of the young men on the war memorial go to the website southpetherwin.com.

Phil Parsons



Our experienced dedicated equine Vets now provide a weekly half price visit on Mondays in the Launceston area. We offer a comprehensive, affordable service for all horses, big or small, from stud work to routine vaccinations. Our fully mobile digital X-ray units, scanners and dental tools allow us to bring modern Veterinary skills to your stable.

Phone 01579 382663

Follow us on Facebook for the latest offers and news

facebook



**Your local paper
published
every Thursday**

**Tindle House
Westgate Street
Launceston
01566 772424**

**Also available on-line
www.launceston-today.co.uk**



R Mears & Sons Chimney Sweeps

Established over 30 years

Vac Brush. Full CCTV investigations.
Pots, Cowlings & Bird Protection fitted.
Solid Fuel Appliances, Rayburns,
Woodburners, Stoves etc serviced.

Fully Insured.

Tel: 01840 261221

Mob: 07737 533392

www.sweepcornwall.com





H. R. JASPER AND SON LTD
WHOLESALE BUTCHERS

BOTATHAN ABATTOIR
SOUTH PETHERWIN
LAUNCESTON
CORNWALL PL15 7JL

Tel: 01566 772843 (3 lines) Fax: 01566 776648

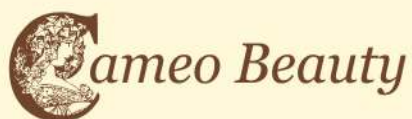
HOUSE AND GARDEN WOODCRAFT

Multi-skilled tradesman with over 30 years experience: professional carpenter and joiner-general household maintenance-bespoke handmade household & garden furniture-kitchens and bathrooms-small household plumbing jobs



Looking for an honest worker and a reliable friendly service?

If so, call Arthur Philp on
01566775289 or
07890104755



- ✿ Body Wraps
- ✿ Massage
- ✿ Waxing
- ✿ Semi Permanent Make Up
- ✿ Microdermabrasion
- ✿ Ultra Visage Non Surgical Facials
- ✿ Advanced Cosmetic Procedures
- ✿ Eyelash Perming
- ✿ Electrolysis
- ✿ Manicure
- ✿ Minx
- ✿ Eyelash Extensions

✿ Gift Vouchers & Walk-in
Appointments Available

Telephone
01566 775377



Methodist Chapel Graveyard

Please spare a thought for our grass cutter who keeps the graveyard area immaculate and for family and friends who tend to their loved one's graves. Unfortunately dogs are being allowed to foul these private areas. Dog owners should keep their dogs on leads at all times and use the pathway only to pass through the churchyard. Should there be a mishap, please pick up and deposit in the dog bin located outside the gate on the school side of the Chapel. Your thoughtfulness would be much appreciated.



Specialist manufacturer of top quality sheds, stables, summer houses, garages, gates and fencing at sensible prices, made to your requirements

Lower Landlake, Launceston,
Cornwall PL15 9LU. Tel-01566 774791

Castle Veterinary Group Limited

Pennygillam Way
Launceston
Cornwall PL15 7ED
Farm Tel: 01566 772371
Pets Tel: 01566 772211
Fax: 01566 777465



Castle Veterinary Group Limited

Unit 1, Down Farm
Lamerton
Nr. Tavistock
Devon PL19 8QA
Tel: 01822 612779

Open Hours: Mon-Fri 8.30am-6.30pm
(Farm closes 5.30pm) Sat 8.30am-12.30-
pm Closed Sunday Consultations by
appointment only

Open Hours: Mon-Fri 3.00-4.00pm
Closed Sat & Sun

Consultations by appointment only

Nurse clinics: we offer free appointments with qualified nurses for checks regarding teeth, weight and adolescence. Alternative therapy **Acupuncture.**

Puppy parties: a 4 week course for invited puppies. Subjects covered are socialisation and diet, vaccinations and neutering, home care and parasites.



South Petherwin



www.thelittlebuttonshop.co.uk

- Fabrics and Felt
- Buttons and Beads
- Ribbons and Trims
- Jewellery Making
- Haberdashery
- Gifts and Cards

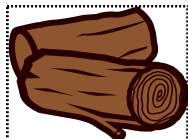
**NEW
OPENING
HOURS**

- Bike Parts & Tools
- Bags & Clothing
- Locks & Security
- Pumps & Saddles
- Sports Nutrition etc.

Monday - Friday 09:00 - 17:30
Closed Saturday and Sunday

Tel: 01566 774428

LOGS4YOU



**Seasoned hardwood logs
delivered free to your door.**

**Satisfaction guaranteed with the
quality and quantity of wood. Various
sizes of load available**

**(Also nets @ £3.50 - free delivery on 5
or more nets)**

**Friendly and reliable service
Call 07821 879106
01566 782796
for more details**

**HIRST CONSTRUCTION Ltd
HIRST ENVIRONMENTAL SERVICES Ltd**

Week St Mary, Holsworthy

SEPTIC TANK CLEARANCE/

installation of all septic/ treatment
plants. Blockages.
Bedding sand (bulk)-plant hire/skips
Mini digger work/groundworks.
Free estimates

SEASONED WOOD LOGS



1/2 load softwood
only £70. **Delivered
free to South
Petherwin Area**

www.hirstconstruction.co.uk
01288 341095/07836533535

South Petherwin Cricket Club Fixtures 2014

First Team		Date	Second team	
Werrington	Home	26 May	Bocconoc	Away
St Minver	Away	31 May	St Minver	Home
Laddock	Home	7 June	Wadebridge	Away
Grampound Rd	Away	14 June	St Stephens	Home
Liskeard	Away	21 June	Laddock	Home
St Blazey	Home	28 June	St Austell	Away
St Minver	Home	5 July	St Minver	Away
St Austell	Away	12 July	Lanhydrock	Home
Grampound Road	Home	19 July	St Stephens	Away

Cricket news

South Petherwin Cricket Club have not had the start of season they hoped for. Derek Clemence, club captain, expressed his disappointment, 'Due to the wet weather at the start of the season the club cancelled three matches. It is always difficult to catch up on lost games. We hope for better weather and the opportunity to play the game we love.'



The club welcome newcomers at all levels to come and join them. If you would rather watch than play you are more than welcome. If you wish to contact the club then please ring **Derek Clemence 07810493583** or **Roger Gerry 07973909556**.

Group Travel

Dunmere Road Garage, Dunmere Road, Bodmin Cornwall PL31 2QN

EXCURSIONS 2014

21st June	Exmouth to Exeter Canal Cruise
5th July	South West and Wales Truckfest 3 counties ground
1st August	Dartmoor Zoo
3rd August	Gatcombe Festival of British Eventing
13th August	British Firework Championships Plymouth
30-31 August	Blandford Steam Fair
5-7th September	Burghley Horse Trials 3 days half board
9th September	Widcombe Fair

FOR BOOKINGS AND BROCHURE
PLEASE CONTACT 01208 77989/ 01208 72669

More details on www.grouptravelcoachhire.com
Email: benneymoon@btinternet.com



PVCu WINDOWS & DOORS CONSERVATORIES KITCHENS & BATHROOMS
GLASS BALUSTRADES BUILDING SUPPLIES

Kings Hill Industrial Estate, Bude EX23 8QN www.kjbromell.co.uk 01288 357020

- ◆ we manufacture, supply and fit double glazed PVCu windows, doors and custom designed conservatories
- ◆ we design and supply beautiful, functional kitchens, bathrooms and wet rooms to help you create your ideal home
- ◆ open up the view from your patio or balcony with glass balustrading supplied and fitted by our skilled craftsmen
- ◆ at our site in Bude we have a large building supplies shop – open to both trade and the public.

Come and see what we have to offer!

News from South Petherwin Allotment Group (SPAG)



We have had quite an exciting time of it so far in 2014. The Cornwall Community Foundation chose to bring a crowd of trustees along one sunny afternoon to have a peak at what we are doing and how we had made use of their grant. So the shipping container was cranked open, the teas poured and the rocky road consumed while we perambulated about the plots and members were quizzed about the no dig method, dispatching slugs and whether there was a healthy competitiveness amongst plot holders or did leek envy ever break out into violence...



Borage

Very sorry to see some old friends give up their plots this year but very happy to welcome some new ones. We are nearly full but do have some space available so please email southpetherwinallotments@gmail.com if interested or call Abi Caine on 07950 491757. Lastly remember to cover your butts! Bumblebees are attracted to the water but drown once on the surface, so cover or float something suitable to provide a life raft.

Abi Caine SPAG.

Neighbourhood Watch Scheme.

An active NHW householder is one who knows what to do when a crime or other emergency occurs, knows their neighbours and is willing to help them, observe the unusual and is willing to report it and take sensible precautions for their home and personal security.

The local PCSO is Clare Danson. Police contact details can be found in the 'Useful Tel No's section' on page 12

Co-ordinators;	The Village	Helen Masters	775545
	Tiny Meadows	Richard Beacham	773614
	Tregaller Lane and Tremeale	Mary Stoneman	773375
	Tregaller Lane and Tremeale	Crispin Earle	774038
	Daws House	Andrea Foster	779181
	Kennards House	Terry Goodman	86847
	School watch	Gillian Sleep	773300

If you are interested in joining the scheme, please contact one of the above. We especially need more co-ordinators to cover estates and other areas of the Parish



Golden wedding bells for Wendy and Tony Lewis

What's the secret of a long and happy marriage? Tony and Wendy Lewis certainly know, as they celebrated their golden wedding anniversary last month.



The couple met at school when they were 11, but didn't start going out (*as we called it then!*) until they were 17. They married at their local Methodist Church in West Ealing on 28th March 1964. It was a blustery March day and Wendy remembers clutching on to her veil for the photo's. They had hoped to go to a posh hotel in Rye for their honeymoon but found the cost out of reach and settled for a week in a monastery guest house on the edge of town. 'But it couldn't have been better' remembers Wendy, 'We had a lovely week'.

The couple moved to Cornwall in 1977, by which time they had three children, Keith, Kirsty, and Gemma. They quickly settled into their new life, with Tony employed by the Vauxhall dealers in Launceston and Wendy working as an assistant playgroup leader in South Petherwin. They now have seven grandchildren, six step grandchildren and one step great grandson! And they all helped Tony and Wendy celebrate their golden wedding anniversary with a happy, noisy party at the village hall last month.

And Tony's advice for a happy marriage? 'Don't give up. Whatever life throws at you, just work through it together.' The couple have certainly had more than their fair share of trials and tribulations throughout the years with many challenges. But Tony said 'there's never been a day when I have regretted being married to Wendy'. She readily agreed and said 'we've had a bond ever since the beginning.' Congratulations to both of them and we wish them many more happy years together.

Helena Northmore

Village Hall AGM

The AGM of the village hall committee will be held on
Thursday 19th June at 7pm in the hall.

The position of Chairman is now vacant and the committee will welcome any nominations from both existing and prospective new committee members.

Everyone is welcome.

Do please come along and show your support for our village hall.



15%
Service discount
for our local
customers

We are celebrating our 15th year as ESG Boilercare and our 15th year as part of the South Petherwin community.

And with no plans of going anywhere, you'll be pleased to know we'll be keeping you warm for many winters to come.

Paul, Maggie and the team.

Tel: 01566 782 789
www.esgboilercare.co.uk

Services & Repairs - Oil Boilers & Cookers - Breakdowns repaired in one visit



Ruby's Garage



Car, 4x4 & Light Commercial

Sales, Service & Spares

Your local family owned independent garage for over 40 years
Specialising in advanced vehicle technology

- Servicing and MOT facilities
- Workshop equipped with latest all makes Diagnostic Equipment
- Competitive prices on Tyres, Batteries and Clutches
- Specialist in 4x4's with wide range of spares currently in stock
- Suppliers of new and used Cars, 4x4's and Light Commercial
- Full bodyshop facilities including insurance work carried out
- Air Conditioning checks and servicing carried out

For more information or advice, contact us by the following:

TEL: 01566 782402/782536 FAX: 01566 782741

e-mail: brubys@aol.com or visit us at www.rubysgarage.co.uk

Do you have any problems getting to your surgery?

This was one of the questions asked in the Lewannick Patients Group (LPG) questionnaire/survey last autumn entitled, 'Doctors Surgery - Access and Community Transport.' Lewannick is fortunate to have a surgery in the village and the LPG group decided to respond to concerns expressed for those in rural areas needing to access the surgery and collect prescriptions. As a neighbouring Parish there are a number of patients who live in South Petherwin and use the Lewannick surgery. Over three hundred questionnaires were completed and the results independently accessed by Volunteer Cornwall.

The questionnaire results were placed on display on April 26th at Lewannick Village Hall. There were a number of questions asked such as 'Where do you live?' The majority who responded were spread between Lewannick (62) Altarnun (56) Polyphant (54) and South Petherwin (22). When asked 'Do you have any problems getting to your

surgery?' 46 responded with yes but overwhelmingly 253 said no. When asked 'How well can you arrange transport for *next day* appointments?' 110 said very well, 41 reasonably well, 21 well, and another 21 no response. There were 13 who found it impossible to get to the surgery. A similar response rate followed the question 'How well can you arrange transport for *next week* appointments?' and it was clear that the majority of respondents did not have access issues to medical facilities and were able to rely on family and friends for transport and help with picking up prescriptions.

At the start of the survey the LPG group anticipated a need for transport and discussed how the Little Red Bus could assist. However, as the results demonstrate, on the whole patients are finding their own transport solutions. For further information on the results contact Maggie Woods 07712301743 or Phil Parsons tel 01566 777179

Phil Parsons

CARAVANS, CAMPING AND CHAOS!

Pack up your bag for **Launceston Town Hall** between **29th and 31st May at 7.30pm**

where Launceston Amateur Dramatic Society (LADS) will perform their spring production,

'Third Week in August' by Peter Gordon

Tickets can still be purchased from Cornish Delicacies opposite St Mary's Church (Tel 01566 777835) and may also be available on the door.

Prices are £6.50 (Thursday) and £7.50 (Friday/Saturday)

. Book now to get a good seat close to the action!

Jonathan Blake Money Management

Jonathan Blake lives in South Petherwin and offers personal service and access to uncomplicated independent financial advice.

Jonathan Blake Money Management Limited
Unit 1, Holwood Business Centre Blunts, SALTASH
Cornwall PL12 5DW

Tel: 01752 851748 Mobile: 07970 011651

E-mail: info@jbmm.co.uk
www.jonathanblakemoney.co.uk

Jonathan Blake Money Management Limited is authorised and regulated by the Financial Conduct Authority.

GEORGE BATEMAN

Property Maintenance
Small Building Work, Interior & Exterior
Decorating, etc. No Job too Small

Tel: 01566 773752

Mobile Foot Care

Sally Isaac S.A.C. Dip. FHPT/FHPP

**Gentle and professional
foot care in the comfort
of your own home**

*If you suffer discomfort from
corns, callus, ingrown toenails,
cracked heels, thickened nails
etc. or just have difficulty cut-
ting your toenails give me a ring*



Telephone Sally on 07961 076 168

The Butchers Boy.



Graham Davey, who lives at Trethorne, had a mobile butchers round in South Petherwin during the 1960s and 70s. His family owned a butchers shop on the site now occupied by Warrens, and was one of seven butchers' shops in Launceston at the time. When Jasper's shop closed in the village he developed a round of almost 150 customers between South Petherwin and Tregadillet which he ran for about fifteen years, before handing over to Henry. He left the shop at 8am on Fridays returning at about 7.30pm. Lunch was taken on the round. There were no calculators and everything was worked out in his head with the aid of a ready reckoner table which converted weights to prices.

The round was undertaken for the most part in a green van with a white sliding roof to keep the customers dry as he was preparing the meat. The van was designed and converted by Mr Cobbledick who had workshops on the site of the present B&Q



warehouse. Several butcher boys learned to drive in it. Graham has good memories of many of the customers, some of whom still live or have families in the area. Mr and Mrs Doidge in Trelinnoe Close provided a regular tea stop.

On the left, leaving the village towards Launceston was a grocery shop and petrol pump owned by Les and Cyril Waring. To get to the shop

there was a door and a narrow passageway. The door is still there. There was another petrol pump on the opposite side of the road which belonged to Mr Maddever but Graham doesn't remember it working. Mr Maddever lived with his sister Miss Maddever. He remembers the Maddever's as being slightly eccentric and her as a good artist. He believes she was a teacher at South Petherwin.

He spoke of Mr Dyke the dentist, who built a steam engine in Petherwin Water. The Congdons, Whites, Wills, Finnemore's, Uglow's and many others. Particular customers had likings for different cuts of meat, some preferring leaner joints and others with a bit more marbling. A particularly popular item was tomatoes from Mr Thorne at St Giles.

As well as delivering meat Graham also worked as a DJ evenings and weekends. Eventually he needed a larger vehicle, but when customers saw it some thought he might be making too much money and he had to explain why it was needed in order to keep their custom. Graham enjoyed his time on the round and hardly missed a day even in very cold winters, with the aid of snow chains and warm clothes, as he didn't like to let customers down. He liked South Petherwin so much he eventually bought a house in Petherwin Water where he lived for a few years.

Peter Northmore



NEVILL HOVEY & CO LTD
CHARTERED ACCOUNTANTS

Tim Smith FCA CTA

Southgate Close, Launceston, Cornwall PL15 9DU

Telephone: (01566) 772109 Fax: (01566) 772072

Email: tim@nevillhovey.co.uk

www.nevillhovey.co.uk

Adrian Davey Painting & Decorating

Exterior & Interior Painting, Wallpapering

Home 01566 780477 Mobile 07729500390

NIC PARKER



Mobile
hair-
dresser

Fully Qualified
over 20 years experience
Competitive rates
Ladies, Gents and Children



**Tel; 01566 772393
Mob; 07816 183125**

36 Trelinnoe Gardens South Petherwin



Fully Insured Lady Gardener
RHS Level 2 Certified

**Do you need extra help to keep
your garden just the way
you like it?**

Whether it's regular appointments or a particular garden project, I offer:
Planting and care of beds, border & Containers, design and re-design ideas, weeding, digging and general tidying, pruning and cutting down, lawn and hedge cutting

07968 170130

**A letter from Rev Anne Brown,
the Vicar at
St Paternus Church**

Dear All

As the weather improves, and we have longer days we all start to feel better, about things, life with all its complexities and challenges, doesn't seem so dark and depressing, we see signs of new life, trees once bare are now shrouded with new leaf, flowers bloom, the bird song is even louder – life emerges from the dark.



Of course that is all rather waxing lyrical, and full of generalities, for some life will continue to be a struggle, things will not be all sweetness and light, but the truth is, life moves on. Heraclitus, an ancient Greek philosopher, said 'no man can ever walk in the same river' which is quite profound, however much the river appears to be the same it is constantly new. He also proposed the idea that things are constantly changing, universal flux, and that opposites collide.

Over 2000 years later, I can see what he was trying to get at, we all need to be aware of the world around us, to be part of the continuing changes that occur, to be willing to see things in a new way. Faith in Christ gives us all a chance to start over to see things new, to try and start again, but it is up to us, we can live in the winter of discontent or move into the light of new life, the choice is ours, but sometimes it does need help.

I will be leading a service of healing, prayer and reconciliation at South Petherwin Church on Sunday 1st June at 6pm to offer help and prayers for those who want to move on – all are welcome.

Anne
Rev Anne Brown
01566 770649
Email; thethreeriversteam@btinternet.com



Sadly we say goodbye to

Kenneth Goodman – Kenneth was a well known resident in the Parish. He was dedicated to his home and work at Brockle Farm and was a keen and helpful member of the Methodist chapel. He sadly passed away just a month before his grandson Timothy's wedding, which he would have so much enjoyed attending. We send our condolences to his family.

Elf spotted in South Petherwin!



While on a walk down our one and only public footpath, hound and small child in tow, my eye was drawn to a conspicuous scattering of bright red over the woodland floor. At first glance it looked as though someone had been littering with some rather vivid orange peel. On closer inspection the



source of this splash of colour, while in fact related to the Orange Peel Fungus *Aleuria aurantia*, was actually the less common Scarlet Elf Cup *Sarcoscypha austriaca*.

This pretty little fungus is found growing late winter/spring among the moss on dead twigs and branches in shady, damp places, just like the lower part of West Petherwin Woods.

The fungus has a short stalk and a bright red irregular-shaped cup. The outside of the cup is an orange-ochre colour and quite velvety to the touch, suggestive of the alternative name for this fungus – the Scarlet Elf Cap. There is another less common species called the Ruby Elf Cup *Sarcoscypha coccinea* that is virtually identical, but it is impossible to tell the two apart without a microscope.



One of my first thoughts, being a bit of a forager, was can you eat it? Sources are divided on whether or not this fungus is edible. It certainly has been used in cooking without any reported ill effects, although the appeal is apparently more in the colour it adds to the dish rather than the taste. Most authorities however do advise against consuming it. Maybe it is best left where it is, happily decomposing wood (and providing drinking vessels / headgear for the South Petherwin elf contingent)!

Karen Taylor

Eating Wild Mushrooms

5 Important Rules

- **Always** be 100% sure of identification.
- **Always** cook your mushrooms thoroughly.
- **Only** eat a small amount when trying a new type of mushroom.
- **Only** try one type of mushroom at a time - and wait 24 hours for any reactions.
- **Only** eat mushrooms that are in good condition.

Parish Diary - Regular Events

Organisation	Details	Contact
Parish Council Meeting	Second Wednesday in the month 7.30 pm, Village Hall	Clerk: Alan Brook 777183
St Paternus C of E	Service 11.15 am	Wardens: Valerie Adams; Debbie Adams 774244
Methodist Chapel	Morning Service 11 am	Steward: Tony Smith 782204
Prayer Group	Every other Wednesday	Muriel Parsons 773027
Lunch Club	Last Monday in month (unless Bank Holiday)	Tony & Wendy Smith 782204
Knitting	Most Thursdays 2 pm, West Petherwin Farm	Muriel Parsons 773027
Bones In Mind Beats Osteoporosis	Every Monday (except when Lunch Club or Bank Holiday)	Vi Brook 779243
Pre-School	Mon-Fri 9-12am, lunch club 12-1pm; afternoons Mon, Tues, Thurs 1-3pm; toddlers Fri 1.30-3pm (term time only)	Rachel Jefferys 779476
Bell Ringers	Mondays, 7.00 pm practice	John Atkinson 774264
Skittles	Tuesdays 7 pm, Village Hall	Vi Brook 779243
Bingo	Last Wednesday of each month, 2pm Village Hall	Pat Locke 774671
Mobile Library	Tuesdays 12.25-12.40 pm Village Pump	Tues 29/1/13 and every alternate Tuesday

The Little Red Bus (Launceston Community Transport Partnership) covers South Petherwin area on Thursdays. For information, ring 777960

Village Hall: To hire hall, contact Sue Vernon 772640

Methodist Hall To hire hall, contact Wendy Smith 782204

Oil Syndicate Contact Sue Vernon 772640

YOUR PARISH COUNCIL

The Parish Council meets on the second Wednesday each month at 7.30 pm in the Village Hall. It is open for anyone to come and listen in.

Parish Councillors are:

Chairman: John Whiting
 Clerk: Alan Brook 777183. sparishclerk@icloud.com
 Councillors: Terry Goodman, Phil Parsons, Michael Screech, Andrew Hosking, Dawn Rogers, Mary Tyler, Chris Goodman, Adrian Finnimore, Roger Kneebone
 Cornwall Councillor: Neil Burden 01566 782286 nburden@cornwall.gov.uk

South Petherwin school



Our Ugandan School Partnership



Some of you may remember that in October 2012 Tim Gray and Jo Borthwick (nee Dennis) travelled to Kisiizi Parents School in Uganda as part of the Global Partnership scheme. Then in December two of the Ugandan teachers, Agaba and Medad, visited us and spent a week filled with new experiences.

Now myself and Darren Bungey, also a Teaching Assistant, will be travelling to Kisiizi on May 21st for the next stage of our partnership. We plan to do an art project with the children at the school, taking out plenty of resources for them to use, both with us and after we leave.



I am very excited and apprehensive, especially as the journey is so long; a ten hour flight followed by an eleven hour car journey. I haven't been abroad on a plane for 22 years ! I can't wait to meet the children and their teachers and learn as much as I can about them and their culture. I will let you know how we get on.

Helen Masters

Good news – Mrs Searle is still at the school!

Mrs Searle has worked at South Petherwin school for 25 years. In reporting this in the last issue we indicated that she was also leaving the school. Happily this is not the case. We send sincere apologies to Mrs Searle for this error and wish her many more happy years at the school.

Village Noticeboards

There are three Parish noticeboards located outside the Post Office, the School and on the corner of Tregaller Lane and Upper Tregaller Lane. The noticeboards are for the display of Parish Council information, legal notices and notices of general interest to Parishioners. All notices are subject to the discretion of the Parish Clerk.

Because of limited space notices should preferably be A5 in size or smaller. Contact details of the person posting the notice should be noted on the reverse unless obvious in the notice text.

Alan Brook—Clerk to the Parish Council



GAS – OIL – LPG
BOILER INSTALLATION /SERVICE
& REPAIR - OIL TANK INSTALLATION
GENERAL PLUMBING
BATHROOMS - WET ROOMS









ALSO **TEL: 01566 880 123**

COME VISIT OUR
BATHROOM SHOWROOM
AT KENNARDS HOUSE (OPPOSITE TRETHORNE LEISURE FARM)

LOVATON BOARDING CATTERY

Feline Advisory Bureaux Listed Cattery

Daws House, Launceston, PL15 7JF

Home from home holiday for your cats, run by a qualified

Veterinary Nurse; pick up and delivery service available.

Modern purpose built PVC cattery, deluxe heated penthouse chalets

Please ring Andrea for more information on 01566 778501 or email

andrea@lovatoncattery.co.uk or visit www.lovatoncattery.co.uk



CHRIS LYLE PLASTERING

& PROPERTY MAINTENANCE

TELEPHONE: 07861783082

www.chrislyleplastering.co.uk chrislyleplastering@yahoo.co.uk

As your local, time served plasterer I offer a full range of plastering services that include: Traditional plastering-Plasterboarding-Lime plastering-Tyroleam application-External render-Internal and external painting-Damp proof plastering-Dry lining

25 YEARS EXPERIENCE—FREE QUOTATION—RECOMMENDATIONS
AVAILABLE—MEMBER OF GUILD OF BUILDERS & CONTRACTORS

Parish Diary - Special Events

<i>date</i>	<i>Details</i>	<i>Contact</i>
Tues 27 May	Community Shop Meeting. 7pm In the Church	Anne Brown 770649
Mon 2 June	Lunch Club 12.30. Methodist Hall	Wendy Smith 782204
Wed 11 June	SP Parish Council AGM. 7.30pm. Village Hall	Alan Brook 777183
Sat 14 June	Coffee morning. 10.30am. Methodist Hall	Tony Smith 782204
Thurs 19 June	Village Hall AGM. 7pm . Village Hall	Sue Vernon 772640
Mon 30 June	Lunch Club. 12.30. Methodist Hall	Wendy Smith 782204
Sat 12 July	Coffee morning. 10.30am. Methodist Hall	Tony Smith 782204
Mon 28 July	Lunch Club. 12.30. Methodist Hall	Wendy Smith 782204

Recycling Collection dates; Both rubbish and recycling are collected on a **WEDNESDAY**. Rubbish is collected every week; recycling and garden waste (for subscribers) on alternate weeks. Next Recycling dates will be Wed 28th May, 11th and 25th June, 9th and 23rd July

SOME USEFUL TELEPHONE NUMBERS

Emergencies: Police Ambulance Fire Brigade Coastguard 999

Police (Non emergency-general Enquiries)

101

Environment Agency—Floodline 08459 881188

Environment Agency—Emergency Hotline 0800 807060

Transco (Gas Emergency Service) 0800 111999

South West Water 0800 169 1144

Western Power Distribution 0800 365900

Crime stoppers 0800 555111

Citizens Advice Bureau Launceston (9am-noon) 01208 264691

Community Police Officer Clare Danson 01566 771419

Rev Anne Brown –Vicar (Cof E) 01566 770649

Rev Eleanor Reddington– Methodist Minister 01566 782240

For Williams Trailers

DISTRIBUTORS COVERING
CORNWALL AND DEVON

**SALES • HIRE
SERVICE • REPAIRS**

'OVER 100 TRAILERS IN STOCK' www.prjengineering.co.uk

PRJ ENGINEERING LTD
TEL (01566) 782794
TEL (01566) 782794

Do come and see our extensive range of Children's Farming Toys
THE TRAILER CENTRE, Nr LAUNCESTON PL15 7QH
(4 MILES FROM LAUNCESTON ON THE B3254 TOWARDS LISKEARD)

JAMES WILLIAMS CARPENTRY

Bespoke Storage Solutions
Window & Door Replacement & Repairs
Kitchens & Bathroom Fitting
Hanging Doors
Plastering Flooring Tiling

We take pride in our excellent reputation to please our customers through hard work, precise workmanship and good housekeeping.

Please check out our website
www.jameswilliamscarpentry.co.uk

T: 01566 248308 M: 074113 77720



The first step for bright young things.

Our experienced staff develop "warm and caring relationships with the children that foster a general sense of trust and well-being" and "help to promote the development of early communication skills and a positive attitude to learning." Ofsted

Monday, Tuesday and Thursday: 9am – 3pm
Wednesday and Friday: 9am – 1pm Lunch Club: 12 – 1pm
£7.50 half day / £15 full day
Toddler Group, Friday: 1.30pm – 3pm (the first session is free)

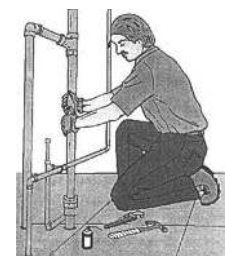
We now have places for funded two year olds.
For more information call Rachel on 01566 779476
Charity Number: 1024955

David Elcock

PLUMBING & HEATING

**Tel: 01566 774249
Mobile: 07977 041905**

Trevalle,
Daws House,
Launceston,
Cornwall
PL15 7JE



Andrew Hosking

Springfield
Tregaller Lane, Daws House
Launceston, Cornwall
PL15 7JH
Tel 01566 772537/
775818

Designer & Maker of
Quality Furniture & Joinery