

Winds of Change

South Petherwin Launceston,
PL 15 7LP
Tel: 01566776988 Mob: 07768 116691



The Inn place for all your
catering requirements

An extensive bar menu 7 days a week serving a full range of home
cooked meals from ham salad to steak with all the trimmings.
After a day out why not come on in for a plate of fresh cod n' chips.
Serving **REAL** food and using fresh local produce.

Open Daily for Lunch and Evening Meals

Sunday Carvery 12 noon to 2:30 pm

Booking advisable for Sundays Remember, you meet the best people
in The Winds of Change.

Childrens Page—there are 22 eggs in the picture

Any items for the magazine should be emailed to Helena Northmore at
hmnorthmore@msn.com or ring 01566 778744 . Alternatively please contact any of
the magazine committee –details below

Parish Magazine Committee

Helena Northmore (778744, hmnorthmore@msn.com) Helen Masters
(775545) Phil Parsons (777179), Cherry Pyke (776998), Sue Vernon
(772640), Peter Northmore (778744), Vanessa Elcock (774249)

Advertising rates are as follows, for a full year (six issues): quarter page: £30
— half page: £60 — full page: £120 Please speak to Vanessa Elcock (774249).
Personal announcements are free of charge.

Copy for the next issue of the Magazine should be given to a member of the
editorial committee not later than **5th May 2014**. (Please remember to
attach your name and telephone number in case of queries.)

South Petherwin Parish Magazine



Issue no 60

March 2014

10th Anniversary Edition *Well done everyone!*



Derek Pitman, Phil Parsons, and John Belsey, founding members of the Parish
Magazine meet up to celebrate the magazine's tenth anniversary. John Belsey and
Derek Pitman have both moved from the area leaving Phil Parsons as the sole
founding member on the committee.

John recalled how the first edition was produced by Phil and himself in his living
room, 'it was a challenge but we, the gang of three, wanted to make a go of it and it
seems ten years on we started a worthwhile Parish Project.' Helena Northmore,
current editor, passed on congratulations from the present magazine committee to
the three founding members for their hard work and for giving the magazine such
solid foundations.

See Page 20 for Derek Pitman's description of the early days of the magazine.

South Petherwin Community Shop

One **huge** step closer !

On Sunday 23rd February, the Community Shop Project was given a real boost, by being chosen as one of two projects to be funded by the 'Bishop's Den'. A team of 'Dragons', lead by the Bishop of Truro chose the project as part of his challenge to find ways of 'Doing Church Differently'. We now need to move forward as follows;

- **Set up a group to establish the community shop**

We need people passionate about the Community Shop, to work with the Plunkett Foundation to oversee the project and bring this idea alive. Experience not necessary, but enthusiasm to see the project succeed is.

- **Find a manager to run the shop**

This will be a part time paid post, so if you think you have the qualities needed to make this business thrive, the job description is on the next page, contact us with your expression of interest in this post. Interviews will be undertaken by the community shop committee, once they are established.

- **Find volunteers willing to assist the shop.**

If you can offer a couple of hours a week or more, to work in the shop, please let us know.

Without these three key elements being met, the shop will not happen.



In The 'Bishops Den'!

*Left to right– Cindy Marsh,
Lo Atkinson, Rev Anne Brown,
Rt Rev Tim Thornton Bishop of Truro
Photo by Paul Richards*

**For any of the above,
please contact**

**Rev Anne Brown
The Rectory
52 Trelinnoe Gardens
South Petherwin**

01566 770649

threeriverteam@btinternet.com



Wedding bells!!

Jessica Quick of Lifton and
Nicholas Jasper of Polyphant
were married in St Paternus

Church on Saturday 1st February 2014. Their reception was held at Strawberry Fields in Lifton. The couple now live in Trelinnoe Gardens South Petherwin . They would like to thank the Revd. Anne Brown who conducted a lovely service. We wish them a long and happy marriage.



Ladies Probus Club

New Members welcome!

Launceston and District Ladies Probus Club are looking for new members, either retired or semi-retired, who have held responsible positions. Meeting at The Eagle House Hotel on the first Monday of each month for socialising and a talk by a guest speaker, they are non-political or denominational. If you would like friendly, relaxed conversation in a convivial atmosphere, please contact

Yvonne Tyrrell, 01566 776858,
or Judy Bleay, 01566 779154 .

South Petherwin Website

Catch up on all the latest
parish news and information!
Visit the website at
www.southpetherwin.com.



If you'd like to advertise any item for sale, or celebrate a birthday or anniversary, or just shout about something special please email -hmnorthmore@msn.com or contact any of the magazine committee (details back page)

Noticeboard



Derek Pitman

On Wednesday 26th February 2014 Derek and Joan finally got their wish to move closer to their family. They were lucky enough to have a dry day to pack up their home and by teatime were on their way to a new chapter in their lives. He was a very good neighbour to Peter and I and his contribution to the village hall, and village life in general, was immense. We will miss him greatly, but hope that he and Joan will both be very happy in Wiltshire. *Sue Vernon*



**Happy birthday
Barbara Cobbledick!**

**with love from all your
friends in the book group**

**Cherry, Lacey, Marilyn,
Di, Helen
Peter and Helena xxx**



CAB Cornwall

provides free, independent, confidential and impartial advice to everyone on their rights and responsibilities. To access our services you can now telephone us on **0844 499 4188** (between 10:00 and 15:00 Monday to Friday). You will speak to a trained assessor who will provide assisted information and if appropriate arrange for you to receive further advice either over the phone or face-to-face.

"Too often we underestimate the power of a touch, a smile, a kind word, a listening ear, an honest compliment, or the smallest act of caring, all of which have the potential to turn a life around. *Leo Buscaglia*

Community Shop Manager

A self-motivated resilient dynamic personality with proven management experience is required to set up and run the new village store within the Church of St Paternus, South Petherwin.

This is an exciting new venture, and the successful candidate will be expected to embrace the broad responsibilities this post demands, be responsible for the volunteers and day to day running of the shop and the activities involved. He /She must have, or be prepared to undertake an enhanced DBS due to the nature of the position, and also Food and Hygiene certification.

It is envisaged the position will be over 20 hours per week initially, however flexibility is the key.

Contact Rev Anne Brown –details on previous page

Community Shop Tea Party

St Paternus Church, South Petherwin



Saturday April 5th 2014

5.30 – 7.30 p.m.

Come along for a bite to eat
(pasties, savouries, tea and cakes)

See ideas for a Shop in the Church in South Petherwin and suggest some of your own

**Help us with ideas to plan the shop
Tell us what you would like the shop to sell**

South Petherwin WW1



Have you ever wondered as you passed the Church who were those men who are commemorated on the War Memorial: 'Where did Harold Gunner live?' or 'What did Charlie Medland do?' or 'Who the heck was William Oswald Theobald?' Few of us will know the answers to these questions yet these were men of the Parish, each one recognised instantly as they went about their daily work, walked down the street, stood chatting at the pump or attended Church or Chapel every Sunday.



One hundred years ago each of the young men, whose names we see on the granite cross in St Paternus churchyard, would have been as familiar to parishioners as our families are today and their loss would have been felt by the entire Parish. People have argued and will continue to argue whether or not it was right for our country to go to war but the truth remains that there were few pacifists in 1914. These young men saw it as their duty to answer the call to arms and having done so lost their lives. It is unthinkable that their sacrifice should be forgotten as, whatever your views on the legitimacy of the war, forgetting would make their deaths pointless.

It is now 100 years since Britain and the Commonwealth went to war in 1914. The increased publicity given by the government and the media to matters concerning WW1 gives us in the Parish the opportunity to resurrect the memory of our brave forbears. To this end work has been done researching the fallen servicemen and information has been compiled outlining their homes, families, their work and military service. A free memorial booklet will be distributed with the Parish Magazine to coincide with the anniversary of the outbreak of the war in August but more information is needed. This can come only from photographs, letters, grannies' stories and mementos which have been passed down from surviving family members.

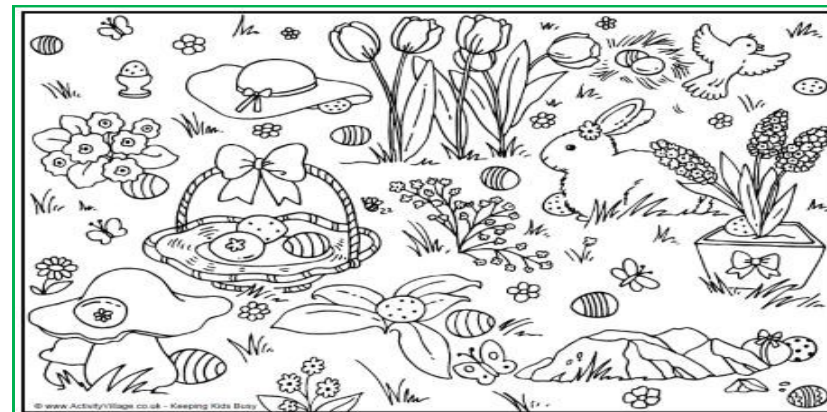
A 'Memories Day' will be held in South Petherwin Methodist Chapel on Saturday 5th April 10.30-3pm when information already compiled will be on display and it is hoped that parishioners with information of their own will come along and share their knowledge.

Further information from Peter Bailey on (01566) 774818

Children's page



How many Easter eggs can you find? (answer on page 28)



R Mears & Sons Chimney Sweeps

Established over 30 years

Vac Brush. Full CCTV investigations.
Pots, Cowlings & Bird Protection fitted.

Solid Fuel Appliances, Rayburns,
Woodburners, Stoves etc serviced.

Fully Insured.



Tel: 01840 261221
Mob: 07737 533392
www.sweepcornwall.com



Quality Jaspers Meats

H. R. JASPER AND SON LTD
WHOLESALE BUTCHERS

BOTATHAN ABATTOIR
SOUTH PETHERWIN
LAUNCESTON
CORNWALL PL15 7JL

Tel: 01566 772843 (3 lines) Fax: 01566 776648



Specialist manufacturer of top quality sheds, stables, summer houses, garages, gates and fencing at sensible prices, made to your requirements

Lower Landlake, Launceston,
Cornwall PL15 9LU. Tel-01566 774791

Megan's Home Cleaning

Your friendly local service

- Domestic Cleaning &
In-house chore's -

☎ (01566) 77 33 96

☎ 07748 474 323

✉ MegansHomeCleaning@ymail.com

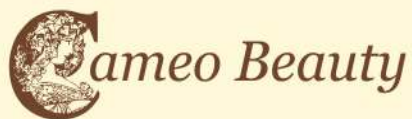
HOUSE AND GARDEN WOODCRAFT

Multi-skilled tradesman with over 30 years experience: professional carpenter and joiner-general household maintenance-bespoke handmade household & garden furniture-kitchens and bathrooms-small household plumbing jobs



Looking for an honest worker and a reliable friendly service?

If so, call Arthur Philp on
01566775289 or
07890104755



- ✦ Body Wraps
- ✦ Massage
- ✦ Waxing
- ✦ Semi Permanent Make Up
- ✦ Microdermabrasion
- ✦ Ultra Visage Non Surgical Facials
- ✦ Advanced Cosmetic Procedures
- ✦ Eyelash Perming
- ✦ Electrolysis
- ✦ Manicure
- ✦ Minx
- ✦ Eyelash Extensions

✦ Gift Vouchers & Walk-in
Appointments Available

Telephone
01566 775377

Castle Veterinary Group Limited

Pennygillam Way
Launceston
Cornwall PL15 7ED
Farm Tel: 01566 772371
Pets Tel: 01566 772211
Fax: 01566 777465



Castle Veterinary Group Limited

Unit 1, Down Farm
Lamerton
Nr. Tavistock
Devon PL19 8QA
Tel: 01822 612779

Open Hours: Mon-Fri 8.30am-6.30pm
(Farm closes 5.30pm) Sat 8.30am-12.30pm
Closed Sunday Consultations by appointment only

Open Hours: Mon-Fri 3.00-4.00pm
Closed Sat & Sun

Consultations by appointment only

Nurse clinics: we offer free appointments with qualified nurses for checks regarding teeth, weight and adolescence. Alternative therapy **Acupuncture.**

Puppy parties: a 4 week course for invited puppies. Subjects covered are socialisation and diet, vaccinations and neutering, home care and parasites.



South Petherwin



www.thelittlebuttonshop.co.uk

- Fabrics and Felt
- Buttons and Beads
- Ribbons and Trims
- Jewellery Making
- Haberdashery
- Gifts and Cards

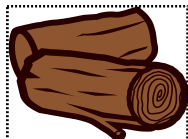
**NEW
OPENING
HOURS**

- Bike Parts & Tools
- Bags & Clothing
- Locks & Security
- Pumps & Saddles
- Sports Nutrition etc.

Monday - Friday 09:00 - 17:30
Closed Saturday and Sunday

Tel: 01566 774428

LOGS4YOU



**Seasoned hardwood logs
delivered free to your door.**

**Satisfaction guaranteed with the
quality and quantity of wood. Various
sizes of load available**

**(Also nets @ £3.50 - free delivery on 5
or more nets)**

Friendly and reliable service

Call 07821 879106

01566 782796

for more details

**HIRST CONSTRUCTION LTD
& HIRST HYDRO CLEANSING LTD
Week St Mary, Holsworthy**

**SEPTIC TANK CLEARANCE/
installation of all septic/ treatment
plants**

**Aggregate Supply-Agricultural
Services-Ground works & Civil
Engineering-Haulage-Plant Hire-
Property Maintenance-Skip Hire**



**SEASONED WOOD LOGS
delivered free to South
Petherwin Area**

www.hirstconstruction.co.uk
01288 341095/07836533535

A letter from the Methodist Minister, Rev Eleanor Reddington



Dear friends,

Isn't it lovely to see signs of spring all around us? Snowdrops have been out for weeks, and now daffodils are also coming into bloom. The camellia in our garden is just starting to bloom, and there are primroses in the bank opposite. Catkins are visible on the trees, and there are lambs in the fields. We've even had a couple of days when the weather has been spring-like as well! Those bursts of sunshine and blue sky have lifted our spirits and made us all feel so much better.

All around us there are signs of new life, and these are also signs of hope. As the days begin to lengthen, there is the hope of better weather. As we look at all the flowers blooming there is the promise of the riot of colour that comes as more and more flowers bloom. As seeds are sown, and shoots appear, there is the promise of food and plenty later in the year. Yes, it's been a long, dark and drab winter, but those signs of spring remind us that there is the hope and promise of longer and brighter days to come.

In the life of the Church, we are entering the season of Lent when we remember the temptations of Jesus in the wilderness. For forty days, we reflect on his hunger and suffering there. However, Lent also brings with it a sign of hope, because it ends with Jesus' death on the cross for us, and then his glorious resurrection. Whatever difficulties we may be facing, we are reminded that there is hope, and God's promise that he shares those difficulties with us. As we enjoy the signs of new life all around us, let's remember that God offers us hope and new life as well through the death and resurrection of his Son, Jesus.

Have a truly Happy Easter.

Eleanor

01566 782240 email e875@btinternet.com

Douglas Gale of Tiny Meadows sadly passed away in February. He moved to the village in 1974 to work at Jasper's abattoir, and for some time helped to run the local youth club. He was a great cricket fan, and also spent as much time as he could walking on Dartmoor. We send our sympathies to Mrs Gale.

Group Travel

Dunmere Road Garage, Dunmere Road, Bodmin Cornwall PL31 2QN
Email: benneymoon@btinternet.com

EXCURSIONS 2014

12th April	Cribbs Causeway
25th April	Mariazion. Penzance and train to St Ives
9-13th May	Dutch Bulb fields Keukenhof Gardens and Floriend B & B
10th May	Badmington Horse Trials
20th May	Adams Farm as in BBC Countryfile
21st June	Exmouth to Exeter Canal Cruise
5th July	South West and Wales Truckfest 3 counties ground
1st Aug	Dartmoor Zoo

FOR BOOKINGS AND BROCHURE
PLEASE CONTACT 01208 77989/ 01208 72669

More details on www.grouptravelcoachhire.com

KJ BROMELL

PVCu WINDOWS & DOORS CONSERVATORIES KITCHENS & BATHROOMS
GLASS BALUSTRADES BUILDING SUPPLIES

Kings Hill Industrial Estate, Bude EX23 8QN www.kjbromell.co.uk 01288 357020

- ◆ we manufacture, supply and fit double glazed PVCu windows, doors and custom designed conservatories
- ◆ we design and supply beautiful, functional kitchens, bathrooms and wet rooms to help you create your ideal home
- ◆ open up the view from your patio or balcony with glass balustrading supplied and fitted by our skilled craftsmen
- ◆ at our site in Bude we have a large building supplies shop – open to both trade and the public.

Come and see what we have to offer!



WOW WEEK at South Petherwin School!

"Children at South Petherwin school participated in their second WOW Week at the end of February, inspired by a range of street art to create their own art work. These works of art were displayed in the local church for all to see and prizes awarded by Rev. Anne Brown and her congregation for their favourite pieces.



During this exciting week children were inspired to take a lead in their own learning and we aim to develop this further in our final WOW WEEK during the summer. Art works will be framed and sold to parents to help raise money for the PTA. If you haven't had a chance to see them yet do take a look in the church before it's too late!"

Tim Gray head teacher



Goodbye and thanks Mrs Searle!

Mrs. Sandra Searle our lovely school lunchtime supervisor and cleaner has been working for South Petherwin School for over 25 years. She received a certificate, flowers and a voucher for all her hard work. All the children and staff want to say a big thank you to her and wish her well for the next 25 years!!



Saving Lives

Would you know what to do if someone close to you had a heart attack?

Imagine the scene. You are walking through the village, or maybe at home watching television, and the person you are with has a heart attack. You stay calm and dial 999 but after a severe cardiac arrest there is only an 8 minute window of opportunity to save a life. What could you do while waiting for the ambulance to arrive? This is where a defibrillator can literally make the difference between life and death. These machines will shock a heart that has stopped and, in many cases, save a life.

If we had a automated electronic defibrillator (AED) in the Parish how would it work? Once 999 is called, the operator would tell you where the AED was situated and give you the code to release it from its case. Whilst one person performs chest compressions, another can go and fetch it. Once opened, the defibrillator talks to you and tells you exactly what to do. So you don't have to be specially trained to use it as most people think. If the ambulance service is delayed in arriving at the scene, the defibrillator could make the difference between life and death. They can be situated in an easily accessible place – maybe a telephone box or bus shelter.



The Parish Magazine has it in mind to recommend to the Parish Council that South Petherwin should have a publicly accessible automated electronic defibrillator (AED). Surely this would be a good use of some turbine money? A worthy parish project that would be of benefit to all? What do you think? Email your thoughts to me, Sue Vernon at sue_vernon@sky.com.

To find out about essential first aid courses in the area, contact St John's Ambulance at www.sja.org.uk or ring 01305 751157



And living to a ripe old age.....

Tessa Baker has recently been doing some research on her childhood home at Strand South Petherwin. She came across the following entry in the Church Wardens Accounts at Cornwall Record Office in Truro.

South Petherwin Churchwardens Accounts 1818-1819.

'For the burial of Mrs. Eliz. Turner in the church she being in the 110 year of her age 3s 4d'.



We are celebrating our 15th year as ESG Boilercare and our 15th year as part of the South Petherwin community.

And with no plans of going anywhere, you'll be pleased to know we'll be keeping you warm for many winters to come.

Paul, Maggie and the team.

Tel: 01566 782 789
www.esgboilercare.co.uk

Services & Repairs – Oil Boilers & Cookers – Breakdowns repaired in one visit



Ruby's Garage



Car, 4x4 & Light Commercial

Sales, Service & Spares

Your local family owned independent garage for over 40 years
Specialising in advanced vehicle technology

- Servicing and MOT facilities
- Workshop equipped with latest all makes Diagnostic Equipment
- Competitive prices on Tyres, Batteries and Clutches
- Specialist in 4x4's with wide range of spares currently in stock
- Suppliers of new and used Cars, 4x4's and Light Commercial
- Full bodyshop facilities including insurance work carried out
- Air Conditioning checks and servicing carried out

For more information or advice, contact us by the following:

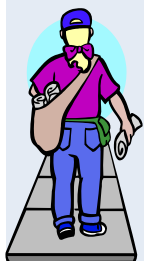
TEL: 01566 782402/782536 FAX: 01566 782741

e-mail: brubys@aol.com or visit us at www.rubysgarage.co.uk

The History of South Petherwin Parish Magazine 2003 – 2014

In 2003 John Belsey, formerly of Tiny Meadows, conceived the idea of a Parish Magazine. He approached Philip Parsons and me, with the idea. Others had done it so how could we go about it? I contacted friends in St Giles on the Heath who already ran a magazine and following on from this we decided on a 24 page, A5 formula. We would print it bi-monthly, funded by paying adverts and delivered free to all homes within the Parish.

John and Philip recruited Kaye Montgomery as editor, and Cherry and Roger Pyke as reporters. John Belsey and I then spent an afternoon visiting businesses on Pennygillam Industrial Estate, and within a couple of hours had secured advertising promises in excess of £150, thus generating a quarter of our proposed initial printing outlay. We were all well pleased with this support. We were now able to produce a pilot Issue of twelve pages prior to Christmas 2003, and assess its impact.



Following favourable reports received, we went on to publish our first 24 page magazine in April 2004. Following further contact with local businesses and skilled tradesmen in our community, we were able to bank £825 worth of paying adverts, more than enough for one year's printing (£600 needed for six printings). The project was proceeding exceptionally well! From this early beginning, our Parish Magazine has continued to flourish to the present day. Within 10 years we

have produced 59 issues equating to 1392 individual pages and 29,900 copies delivered. Since 2012 the magazine has been printed by Phil Tucker in Whitchurch and is sent electronically to him. But we are still dependent on volunteers to distribute it.

None of this would have been possible without the dedication of the committee of 2004 and the present committee of 2014, who have given their time freely to this project. Kaye Montgomery retired in July 2012, and Helena Northmore took over as editor, introducing colour to the magazine. Roger Pyke has also left the committee but in recent times Peter Northmore Vanessa Elcock, and Helen Masters have all joined. Sue Vernon organises the distribution of the magazine, and Vanessa Elcock manages the advertising space.

We must also thank all our advertisers, many of whom have been with us from the beginning, and without whom the magazine would not be possible. The magazine is as vibrant today as it has always been and continues with a healthy bank balance and a dedicated stable committee.

It is now with some sadness that I am saying goodbye as I am moving away from the area. It has been a pleasure and an accomplishment being involved and meeting such lovely people. I wish you all well and I have no doubt that the magazine will continue to thrive.

Derek Pitman



Jonathan Blake Money Management

Jonathan Blake lives in South Petherwin and offers personal service and access to uncomplicated independent financial advice.

Jonathan Blake Money Management Limited
Unit 1, Holwood Business Centre Blunts, SALTASH
Cornwall PL12 5DW

Tel: 01752 851748 Mobile: 07970 011651

E-mail: info@jbmmml.co.uk
www.jonathanblakemoney.co.uk

Jonathan Blake Money Management Limited is authorised and regulated by the Financial Conduct Authority.

GEORGE BATEMAN

*Property Maintenance
Small Building Work, Interior & Exterior
Decorating, etc. No Job too Small*

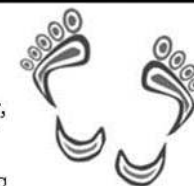
Tel: 01566 773752

Mobile Foot Care

Sally Isaac S.A.C. Dip. FHPT/FHPP

**Gentle and professional
foot care in the comfort
of your own home**

*If you suffer discomfort from
corns, callus, ingrown toenails,
cracked heels, thickened nails
etc. or just have difficulty cut-
ting your toenails give me a ring*



Telephone Sally on 07961 076 168

A Cup of tea with Alan Brook

Alan is the newly appointed clerk to the Parish Council. Here he chats to Helena Northmore about living in Cornwall, his varied career and the importance of good health.



HN; What brought you to Cornwall Alan?

AB; Well I'm originally from Gravesend in Kent but lived in London and Surrey for many years. I was in a stressful job and then my health broke down. I was seriously ill for some time, and at one point the doctors didn't think I was going to make it. Fortunately I was okay but was advised that I needed a complete change of lifestyle. I had stayed in Tregadillet and liked the area, so in 1996 I moved down here. Something I have never regretted.

HN; Tell me about your family.

AB; Sadly both my father and brother have died, but my mother moved down here in 2000 and lives in the village. Everyone seems to know Vi! I met my partner René in 2003 while I was building the house we now live in. We got married in 2006 and it was the first time a civil partnership was performed at Launceston Registry Office. It was a wonderful day.

HN; What was your career?

AB; I did a degree in accountancy but realised I didn't want to make a career of it. So I switched to International Human Resources and specialised in designing contracts for people working all over the world. I also prepared them to cope with a different lifestyle and economic differences especially in third world countries. It was complex and interesting and gave me a terrific insight into different cultures and working practices. Since moving to Cornwall I have worked for the Citizens Advice Bureau and MacMillan Cancer Support in fundraising, and now as clerk to the Parish Council

HN; What made you apply to be clerk?

AB; It may surprise you to know I'm not keen on politics. I'm not a political person and always see issues from both sides. But I'm a good administrator and like doing research, and I wanted to be more involved in what's going on locally.

HN; How will you make your mark on the Parish Council?



NEVILL HOVEY & CO LTD
CHARTERED ACCOUNTANTS

Tim Smith FCA CTA

Southgate Close, Launceston, Cornwall PL15 9DU

Telephone: (01566) 772109 Fax: (01566) 772072

Email: tim@nevillhovey.co.uk

www.nevillhovey.co.uk

Adrian Davey Painting & Decorating

Exterior & Interior Painting, Wallpapering

Home 01566 780477 Mobile 07729500390

NIC PARKER



Mobile
hair-
dresser

Fully Qualified
over 20 years experience
Competitive rates
Ladies, Gents and Children



**Tel; 01566 772393
Mob; 07816 183125**

36 Trelinnoe Gardens South Petherwin



Fully Insured Lady Gardener
RHS Level 2 Certified

**Do you need extra help to keep
your garden just the way
you like it?**

Whether it's regular appointments or a particular garden project, I offer:
Planting and care of beds, border & Containers, design and re-design ideas, weeding, digging and general tidying, pruning and cutting down, lawn and hedge cutting

07968 170130

Wind Turbine Grants Decided.

The Wind Turbine Trustees met during March and awarded a total of £2,400 to the following local organisations all of which had a demonstrable link to South Petherwin Parish or provided support to residents of the Parish:

South Petherwin Allotments for three projects,

The Tregadillet Songbirds Choir,

South Petherwin Cricket Club,

South Petherwin First World War Centenary Project,

South Petherwin Skittles Club.

The Trustees present were: Mary Tyler, Trustee, PC Representative to the Trustees.

Chris Powesland, Chair and Trustee.

Jonathon Blake, Treasurer and Trustee.

Rachel Jeffery, Secretary and Trustee.

Peter Northmore, Trustee.

Tony Smith, Trustee.

Also present as witness to the meeting was Dawn Rogers, Deputy Chair of the Parish Council. Apart from a small working balance, the current fund has been allocated. It is hoped that more funds will be available later in the year and anyone wishing to apply please look out for posters and information in the Parish Magazine.

Green Power Station Open Day

The latest green power station was officially opened at Papillion Farm, Kennards house on Wednesday 5th March. Clean Earth, the company who own the power station along with the wind turbine manufacturer, EWT hosted an open day with refreshments and access to the internal workings of the turbine. Other green power examples included a working example of a wood chip burner producing hot water. The event attracted a flow of interested people.



A number of the local businesses involved in the project were able to view the completed project, including the landowner Adrian Finnimore and Peter Stenlake owner of Stenlakes Ltd based at Tregaller. The main power cable from Tregaller to Kennards House connecting the turbine to the National Grid was buried underground by Stenlakes Ltd using specialist machinery. Peter Stenlake, company director, commented how important these projects were in regard to maintaining local jobs and business, "despite the weather we were kept busy through the quiet part of the winter with this project helping to maintain local jobs. We have completed a number of similar projects both in the Parish and across the county." Clean Earth commercial director Andrew Cameron emphasised how important it was to him that the company tried to source local contractors based within the county, "We are a Cornish firm that wants to support the Cornish economy".

AB; My objective is to keep things running well and make sure everything is done in the correct legal way. Fran Dennison was the clerk before me, and is proving a hard act to follow. I want to build on her work making new technology work for the council and maybe looking at social media to involve people in the Parish more. I want to add value to the council through using my skills and experience to the benefit of the community.

HN; What's the best thing about living in South Petherwin?

AB; The environment and the people. I love being able to walk our dog Nell, and people always stop to chat. There is a real community spirit here, and a friendliness and politeness you don't get in London.

HN; When were you happiest?

AB; During the last few years since I met my partner René (*whispering; what else can I say? He's in the next room and can hear me!*)

HN; What turns you into a 'grumpy old man'?

AB Injustice, ongoing pain, people who litter. Oh and undercooked white bread in Tesco's. Don't get me started on that one.

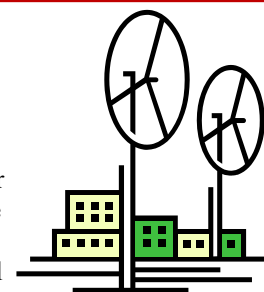
HN; What one thing would make life better for you?

AB; People doing things when they say they will!

What happens when the wind stops blowing?

Thoughts about the wind turbines

I was fascinated by the article about our new 'local power station' in the last magazine where it was implied that the electricity generated was somehow special and local to us. Two thoughts occurred to me, the first was 'What will happen to South Petherwin on very cold, still, frosty nights when the turbine is not working? Will we all freeze?'



Secondly if the electricity is local it does not have to travel as far along the wires as 'ordinary' electricity so will it be cheaper? I think the answer to both questions is NO because turbines just feed electricity into the good old National Grid and we all receive the electricity we need, whenever we need it, generated by whatever source is available. Build your turbines if you must but please don't try to justify yourselves, you will never persuade everyone to love them.

Fran Dennison

Parish Diary - Regular Events

Organisation	Details	Contact
Parish Council Meeting	Second Wednesday in the month 7.30 pm, Village Hall	Clerk: Alan Brook 777183
St Paternus C of E	Service 11.15 am	Wardens: Valerie Adams; Debbie Adams 774244
Methodist Chapel	Morning Service 11 am	Steward: Tony Smith 782204
Prayer Group	Every other Wednesday	Muriel Parsons 773027
Lunch Club	Last Monday in month (unless Bank Holiday)	Tony & Wendy Smith 782204
Knitting	Most Thursdays 2 pm, West Petherwin Farm	Muriel Parsons 773027
Bones In Mind Beats Osteoporosis	Every Monday (except when Lunch Club or Bank Holiday)	Vi Brook 779243
Pre-School	Mon-Fri 9-12am, lunch club 12-1pm; afternoons Mon, Tues, Thurs 1-3pm; toddlers Fri 1.30-3pm (term time only)	Rachel Jefferys 779476
Bell Ringers	Mondays, 7.00 pm practice	John Atkinson 774264
Skittles	Tuesdays 7 pm, Village Hall	Vi Brook 779243
Bingo	Last Wednesday of each month, 2pm Village Hall	Pat Locke 774671
Mobile Library	Tuesdays 12.25-12.40 pm Village Pump	Tues 29/1/13 and every alternate Tuesday

The Little Red Bus (Launceston Community Transport Partnership) covers South Petherwin area on Thursdays. For information, ring 777960

Village Hall: To hire hall, contact Sue Vernon 772640

Methodist Hall To hire hall, contact Wendy Smith 782204

Oil Syndicate Contact Sue Vernon 772640

YOUR PARISH COUNCIL

The Parish Council meets on the second Wednesday each month at 7.30 pm in the Village Hall. It is open for anyone to come and listen in.

Parish Councillors are:

Chairman: John Whiting
 Clerk: Alan Brook 777183. sparishclerk@icloud.com
 Councillors: Terry Goodman, Phil Parsons, Michael Screech, Andrew Hosking, Dawn Rogers, Mary Tyler, Chris Goodman, Adrian Finnimore, Roger Kneebone
 Cornwall Councillor: Neil Burden 01566 782286 nburden@cornwall.gov.uk

SPRING 2014

Allotment News

Now that the weather seems to be settling down, the allotment holders are starting work again and hope to be growing lots of delicious produce this summer. With this in mind - **would anyone be interested in buying excess produce?** If so, please ring Abbi on 07943 699208. She will compile a list of names and tel.numbers and let you know as and when vegetables are available to purchase. They will be brought up to the village, so you won't have to search out the allotments!! Really fresh vegetables with almost no road miles – what could be better?



Primula Vulgaris or Primrose

The Wild Primrose is a cheerful little wildflower, like a little splash of sunshine indicating spring is on its way. It's a hardy perennial with pretty pale yellow flowers and orange-yellow centres, on short stems with a rosette of fat, wrinkled leaves. Its name derives from the Latin for "First Rose".

The plant was used in ancient times to treat paralysis and gout and was believed to be a flower originating in Paradise. The flowers can be made into jam and wine. The five petals represent birth, initiation, consummation, repose and death. A six-petalled Primrose is said to bring luck in love and marriage.



Lambing time. Photo by Phil and Matt Parsons

**Good Friday is
18th April
Easter Sunday is
20th April**





GAS – OIL – LPG
BOILER INSTALLATION /SERVICE
& REPAIR - OIL TANK INSTALLATION
GENERAL PLUMBING
BATHROOMS - WET ROOMS









ALSO **TEL: 01566 880 123**

COME VISIT OUR
BATHROOM SHOWROOM

AT KENNARDS HOUSE (OPPOSITE TRETHERNE LEISURE FARM)

LOVATON BOARDING CATTERY

Feline Advisory Bureaux Listed Cattery

Daws House, Launceston, PL15 7JF

Home from home holiday for your cats, run by a qualified

Veterinary Nurse; pick up and delivery service available.

Modern purpose built PVC cattery, deluxe heated penthouse chalets

Please ring Andrea for more information on 01566 778501 or email

andrea@lovatoncattery.co.uk or visit www.lovatoncattery.co.uk



CHRIS LYLE PLASTERING

& PROPERTY MAINTENANCE

TELEPHONE: 07861783082

www.chrislyleplastering.co.uk chrislyleplastering@yahoo.co.uk

As your local, time served plasterer I offer a full range of plastering services that include: Traditional plastering-Plasterboarding-Lime plastering-Tyrolean application-External render-Internal and external painting-Damp proof plastering-Dry lining

25 YEARS EXPERIENCE—FREE QUOTATION—RECOMMENDATIONS
AVAILABLE—MEMBER OF GUILD OF BUILDERS & CONTRACTORS

Parish Diary - Special Events

<i>date</i>	<i>Details</i>	<i>Contact</i>
Fri 4th April	Christian Aid Lunch Methodist Hall 12-2pm	Wendy Smith 782204
Fri 4th April	School breaks up	SP School 776363
Sat 5th April	Coffee morning and WW1 'Memories Day' Methodist Hall 10.30-3pm	Peter Bailey 774818 Tony Smith 782204
Sat 5th April	Community Shop Tea Party St Paternus Church 5.30-7.30	Anne Brown 770649
Wed 23rd April	School term starts	SP School 776363
Mon 28th April	Lunch Club Methodist Hall 12.30	Wendy Smith 782204
Sat 10th May	Coffee morning Methodist Hall 10.30	Tony Smith 782204
Sun 11th May	Methodist Chapel Anniversary Special Service 11am. Concert 6.30pm	Tony Smith 782204

Recycling Collection dates; Both rubbish and recycling are collected on a **WEDNESDAY**. Rubbish is collected every week; recycling and garden waste (for subscribers) on alternate weeks. Next Recycling dates will be Wed 2nd 16th 30th April and 14th May

SOME USEFUL TELEPHONE NUMBERS

Emergencies: Police Ambulance Fire Brigade Coastguard 999

Police (Non emergency-general Enquiries)

101

Environment Agency—Floodline 08459 881188

Environment Agency—Emergency Hotline 0800 807060

Transco (Gas Emergency Service) 0800 111999

South West Water 0800 169 1144

Western Power Distribution 0800 365900

Crime stoppers 0800 555111

Citizens Advice Bureau Launceston (9am-noon) 01208 264691

Community Police Officer Clare Danson 01566 771419

Rev Anne Brown—Vicar (Cof E) 01566 770649

Rev Eleanor Reddington—Methodist Minister 01566 782240

For Williams Trailers

DISTRIBUTORS COVERING
CORNWALL AND DEVON

**SALES • HIRE
SERVICE • REPAIRS**

'OVER 100 TRAILERS IN STOCK' www.prjengineering.co.uk

PRJ ENGINEERING LTD
TEL (01566) 782794
TEL (01566) 782794

Do come and see our extensive range of Children's Farming Toys
THE TRAILER CENTRE, Nr LAUNCESTON PL15 7QH
(4 MILES FROM LAUNCESTON ON THE B3254 TOWARDS LISKEARD)

JAMES WILLIAMS CARPENTRY

Bespoke Storage Solutions
Window & Door Replacement & Repairs
Kitchens & Bathroom Fitting
Hanging Doors
Plastering Flooring Tiling

We take pride in our excellent reputation to please our customers through hard work, precise workmanship and good housekeeping.

Please check out our website
www.jameswilliamscarpentry.co.uk

T: 01566 248308 M: 074113 77720



The first step for bright young things.

Our experienced staff develop "warm and caring relationships with the children that foster a general sense of trust and well-being" and "help to promote the development of early communication skills and a positive attitude to learning." Ofsted

Monday, Tuesday and Thursday: 9am – 3pm
Wednesday and Friday: 9am – 1pm Lunch Club: 12 – 1pm
£7.50 half day / £15 full day
Toddler Group, Friday: 1.30pm – 3pm (the first session is free)

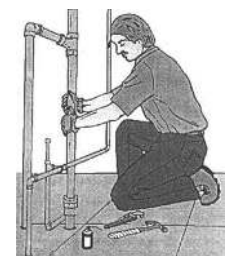
We now have places for funded two year olds.
For more information call Rachel on 01566 779476
Charity Number: 1024955

David Elcock

PLUMBING & HEATING

**Tel: 01566 774249
Mobile: 07977 041905**

Trevalle,
Daws House,
Launceston,
Cornwall
PL15 7JE



Andrew Hosking

Springfield
Tregaller Lane, Daws House
Launceston, Cornwall
PL15 7JH
Tel 01566 772537/
775818

Designer & Maker of
Quality Furniture & Joinery