

Winds of Change

South Petherwin Launceston, PL 15
7LP
Tel: 01566776988 Mob: 07768 116691

The Inn place for all your
catering requirements

An extensive bar menu 7 days a week serving a full range of home
cooked meals from ham salad to steak with all the trimmings.
After a day out why not come on in for a plate of fresh cod n' chips.
Serving **REAL** food and using fresh local produce.

Open Daily for Lunch and Evening Meals

Sunday Carvery 12 noon to 2:30 pm

Booking advisable for Sundays Remember, you meet the best people
in The Winds of Change.



****Change of email address****

Unfortunately my email account was recently hacked into, and I have had to change
my email address . Any items for the magazine should now be emailed to
Helena Northmore at hmnorthmore@msn.com or ring 01566 778744 . Alternatively
please contact any of the magazine committee –details below **Helena Northmore**

Parish Magazine Committee

Helena Northmore (778744, hmnorthmore@msn.co.uk),
Phil Parsons (777179), Derek Pitman (779612), Cherry Pyke (776998),
Sue Vernon (772640), Peter Northmore (778744), Vanessa Elcock
(774249)

Advertising rates are as follows, for a full year (six issues): quarter page: £30
— half page: £60 — full page: £120 Please speak to Vanessa Elcock (774249).
Personal announcements are free of charge.

Copy for the next issue of the Magazine should be given to a member of the
editorial committee not later than **5th March 2014**. *(Please remember to
attach your name and telephone number in case of queries.)*

South Petherwin Parish Magazine



Issue no 59

January 2014

Strong winds blow in the new year!



This winter will be remembered for strong winds and torrential downpours
throughout the county. In view of the extensive damage and flooding along the
coastline, we got away with it comparatively lightly here in the Parish. However
there are worrying potholes in the roads, and a large tree came down in St Paternus
churchyard during the early hours of Thursday 2nd January. Fortunately no one was
hurt although three gravestones were damaged.

The tree was cleared on Saturday morning by the council. Rev Anne Brown said
the council acted very quickly, especially considering the amount of damage else-
where. She continued 'most of the trees in the cemetery are self-sown and have
been there for many years and were surveyed for safety only a few months ago.'
However Rev Brown added that both the trees and the monuments in the cemetery
will be surveyed again to ensure everyone's safety.

**A letter from Neil Burden,
Cornwall Councillor .**

Dear All

Firstly can I wish everyone all the best for 2014 and may some of your dreams come true and those many life challenges you face surmountable. Can I thank all those who have helped clear drains over this very wet period your good neighbourliness has been greatly appreciated.

Council administration:-

We now have seven political groups at County hall so a working alliance has been formed across party but as four years ago it feels like a long honeymoon period for the new council to gain momentum as we once again have many members who are new to local Government. The Council will be having to make some hard decisions and scale back activity with real cuts to frontline services e.g. Library and One Stop Shop opening hours, These proposals go out to 12 week public consultation very soon. Some other local services e.g. local bus subsidies will survive as council members have decided to raise the council tax by 1.97% this will bring in a further £6m.

My role:-

After the intense work as Children's Lead and Deputy Leader in the last administration often 24 days a month, my new roles are equally interesting appointed as the Scrutiny Management Chair of all Depts also chairing the select Committees, Independent members Group Leader, Chair of the Tamar valley AONB, and still closely involved with Children in Care, the National Children's and Young people's Board and the Rural Commission.

Regards ,

Neil

nburden@cornwall.gov.uk neil@neilburden.com 01566 782286.

Please contact me if I can be of any help or just direct you to those who can.



Village Hall—important news

At a meeting held on Thursday 9th January, the village hall committee agreed that in order to cover the rising cost of electricity, the rent for the hall should be raised. The current rent of £10 per session has been at that level for more years than anyone on the committee could remember, and it was agreed that, as from April 1st 2014, it will be raised to £12 per session – i.e. per morning, afternoon or evening. For more information about renting the hall contact Sue Vernon on 01566 772640 or email sue_vernon@sky.com



South Petherwin Parish Magazine Committee



*Left to right; Derek Pitman, Peter Northmore, Cherry Pyke, Phil Parsons
Vanessa Elcock, Helena Northmore, Helen Masters, Sue Vernon*

Happy New Year to all our readers!

**And thanks to all who have advertised in the
magazine during 2013.**

We wish you a happy and prosperous New Year.

**Thanks also to the kind volunteers who distribute the
magazine whatever the weather, and everyone who has
contributed with articles and photos
Without you, we wouldn't have a magazine.**

If you'd like to advertise any item for sale, or celebrate a birthday or anniversary, or just shout about something special please email -hmnorthmore@msn.com or contact any of the magazine committee (details back page)

Noticeboard

South Petherwin Website

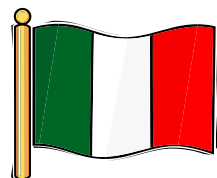
Catch up on all the latest parish news and information! Visit the website at :<http://www.southpetherwin.com>.

Goodbye, Good luck and
thank you
To Mrs Evans

Who has just left South
Petherwin School.

We will miss you!

With love from all
The children at
South Petherwin school



*Arriverderci
To*

*Peter and Ruth Hutt
Who are moving
To Italy.*

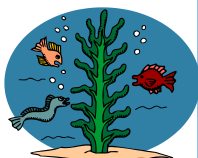
You'll be missed!

Fish tank for sale

Ring Helen Masters on

01566 775545

or email tolivar1@btinternet.com



*Happy 50th Birthday Robin!
Have a great day !
Love from Helen, the family
and all your friends in the Parish*

(we know you'll hate this!!)



The Parish Precept—to increase or freeze?

South Petherwin Parish Council, in line with all Parish Councils decides the rate at which the Parish tax called the 'Precept' is set. Recently Parish councils across the county will have debated whether to freeze or increase their precept for this year. If the precept is frozen the Parish Council may have to make a more substantial increase at some future stage when faced with increasing costs or funding a major project. A small increase, little but often, is generally seen as less burdensome. Currently Cornwall Council, (through us the tax payer) contributes towards the Parish Precept but in the future this support may be withdrawn. This, coupled with Cornwall Councils plan to charge for salt bins to be filled, spraying of the weeds along the highway, and the withdrawal of funding for Parish toilets will all add to the long term financial burden on Parish Councils.

So what are the advantages of freezing the Precept? At this time of financial cut backs Parish Councils have to learn to manage with less, and should not add to the taxation burden unless it has good cause. A freeze for one or two years will force Parish Councils to manage their budgets and not take for granted a year on year increase. If a Parish Council has reasonable reserves and the likelihood of funds from other sources including those offered by wind turbines (which are on offer for twenty years) then surely those Parishes have never had it so good?

South Petherwin Parish Council has decided to increase the precept by a moderate amount to an annual total of £5000.

Phil Parsons

Christmas Sing a Long

Despite the likelihood of getting drenched or blown off their feet, over thirty brave souls gathered in the village hall towards the end of December to sing Christmas songs and carols. Ably accompanied by pianist Sharon (oh dear, the piano needs tuning!) we all sang some of our favourite songs, listened to Peter's funny stories and heard a few tales of Christmas time long ago. We also made an attempt to sing the newly rediscovered 'Petherwin Carol' (How beautiful upon the mountain), but found the tune difficult to grasp – I fear it may not catch on again! By the end of the evening there was little of the mulled apple juice & mince pies left and we were all feeling more cheery & ready for the festive season.

Sue Vernon



**Castle Veterinary Group
Limited**

Pennygillam Way
Launceston
Cornwall PL15 7ED
Farm Tel: 01566 772371
Pets Tel: 01566 772211
Fax: 01566 777465



**Castle Veterinary Group
Limited**

Unit 1, Down Farm
Lamerton
Nr. Tavistock
Devon PL19 8QA
Tel: 01822 612779

Open Hours: Mon-Fri 8.30am-6.30pm
(Farm closes 5.30pm) Sat 8.30am-12.30-
pm Closed Sunday Consultations by
appointment only

Open Hours: Mon-Fri 3.00-4.00pm
Closed Sat & Sun

Consultations by appointment only

Nurse clinics: we offer free appoint-
ments with qualified nurses for checks
regarding teeth, weight and adolescence.
Alternative therapy **Acupuncture**.

Puppy parties: a 4 week course for
invited puppies. Subjects covered are
socialisation and diet, vaccinations and
neutering, home care and parasites.



EAT THAT FROG
COMMUNITY INTEREST COMPANY

**Computer Courses
Maths & English Courses**

All ages (18+) and abilities welcome

Nationally recognised qualifications

Highly subsidised/free courses

The Old National School, St Thomas Road,
Launceston, PL15 8BU

Please call us on: 01566 778547

Free Parking & Free Taster Session available



Specialist manufacturer of top quality sheds,
stables, summer houses, garages, gates and
fencing at sensible prices, made to your re-
quirements

Lower Landlake, Launceston,
Cornwall PL15 9LU. **Tel-01566 774791**

Megan's Home Cleaning
Your friendly local service

- Domestic Cleaning &
In-house chore's -

☎ (01566) 77 33 96

☎ 07748 474 323

✉ MegansHomeCleaning@gmail.com



**R Mears & Sons
Chimney Sweeps**

Established over 30 years

Vac Brush. Full CCTV investigations.
Pots, Cowlings & Bird Protection fitted.
Solid Fuel Appliances, Rayburns,
Woodburners, Stoves etc serviced.

Fully Insured.

Tel: 01840 261221

Mob: 07737 533392

www.sweepcornwall.com





H. R. JASPER AND SON LTD
WHOLESALE BUTCHERS

BOTATHAN ABATTOIR
SOUTH PETHERWIN
LAUNCESTON
CORNWALL PL15 7JL

Tel: 01566 772843 (3 lines) Fax: 01566 776648

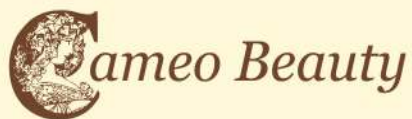
HOUSE AND GARDEN WOODCRAFT

Multi-skilled tradesman with over 30 years experience: professional carpenter and joiner-general household maintenance-bespoke handmade household & garden furniture-kitchens and bathrooms-small household plumbing jobs



Looking for an honest worker and a reliable friendly service?

If so, call Arthur Philp on
01566775289 or
07890104755



- ✦ Body Wraps
- ✦ Massage
- ✦ Waxing
- ✦ Semi Permanent Make Up
- ✦ Microdermabrasion
- ✦ Ultra Visage Non Surgical Facials
- ✦ Advanced Cosmetic Procedures
- ✦ Eyelash Perming
- ✦ Electrolysis
- ✦ Manicure
- ✦ Minx
- ✦ Eyelash Extensions

✦ Gift Vouchers & Walk-in
 Appointments Available

Telephone
 01566 775377



South Petherwin Parish Community Fund

Organisations or individuals are invited to apply for grants from trustees appointed by the Parish Council to distribute funds from wind turbines erected in the Parish

Application forms are available from the secretary to the trustees: Rachel Jeffery

Email: rjeffery1978@hotmail.com

Tel 01566 777974 or 07932 838999

Applications must be submitted by 7th March 2014 and grants will be awarded in April 2014. Applicants must demonstrate that funds will be used to enhance the life of the people in the Parish or raise the profile of the Parish. For 2014 there is a total of £2500 (minus a small amount for administrative costs) for distribution.

Applicants do not need to reside in the Parish



New Wind Turbine on solid foundations.

At the beginning of January 2014 a wind turbine was erected within nine hours at East Compass Farm, Kennards House. A team of eight men started at 1.30pm and finished at 10pm. With the help of two large cranes they joined the various parts of the turbine together like a large Mecano set.

The concrete base was laid many weeks before, with over 200 metres of concrete and 35 tons of steel in the foundations, making a grand total of a 500 ton base for a 105 ton turbine to sit on the top. The blades weigh 2 tons and the generator, or round piece the blades fit into, is 30 tons. The steel towers made in Wales come in two segments and these weigh 50 tons with another 19 tons of steel for the swivel. Local firms involved in this project included Faheys Concrete, Bond Brothers Hire equipment, Stone from Greystone Quarry and Stenlakes Ltd. All electricity from this new green power station will go firstly to the local power grid for use in South Petherwin, with the remainder exported.



SOUTH PETHERWIN POST OFFICE & THE LITTLE BUTTON SHOP



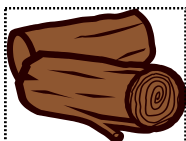
- Greetings Cards
- Stationery
- Local Art
- Gifts
- Home Accessories
- Fabrics & Felt
- Haberdashery
- Jewellery Making
- Buttons & Beads
- Ribbons & Trims

Craft workshops and parties coming soon.
www.thelittlebuttonshop.co.uk

South Petherwin
Launceston, PL15 7JZ
Tel: 01566 774428

Opening Hours:
Mon – Fri: 9.00 – 5.30
Sat: 9.00 – 12.30

LOGS4YOU



**Seasoned hardwood logs
delivered free to your door.**

**Satisfaction guaranteed with the
quality and quantity of wood. Various
sizes of load available**

**(Also nets @ £3.50 – free delivery on 5
or more nets)**

**Friendly and reliable service
Call 07821 879106
01566 782796
for more details**

**HIRST CONSTRUCTION LTD
& HIRST HYDRO CLEANSING LTD
Week St Mary, Holsworthy**

SEPTIC TANK CLEARANCE/
installation of all septic/ treatment
plants

Aggregate Supply-Agricultural
Services-Ground works & Civil
Engineering-Haulage-Plant Hire-
Property Maintenance-Skip Hire



SEASONED WOOD LOGS
delivered free to South
Petherwin Area

www.hirstconstruction.co.uk
01288 341095/07836533535

Sweet Potato, ginger and lime soup

1 onion ½ tsp cumin
2 green chillies ½ tsp ground
2" of ginger coriander
500ml vegetable stock 500g Sweet potatoes
Zest and juice of a small lime



Method

Fry the onion, garlic, chilli and grated ginger for
a couple of minutes.

Add the cumin and coriander and fry to release
the flavour.

Now add the stock and diced potatoes.

Cook for 20 -30 minutes.

Add the coconut milk.

Blend until smooth and add the lime juice and zest.

Season to taste and serve with some chopped coriander if wished.

This tastes good with crusty bread or naan bread.

Calling all Walkers!

*Walking on Dartmoor can be a challenge but on the 10th February,
keen walkers can take part in a 10 mile circular walk in support of
Children's Hospice South West and Dartmoor Rescue. Members of
Dartmoor Rescue will be there to make sure you are safe.*

The walk starts from Postbridge car park at 9.00am. Walkers will be
given Grid References for 6 checkpoints and each team must plan their
own route using the information given. The aim of the walk is to visit all
checkpoints and reach Postbridge before the sun sets for a hot drink!

*Everyone must wear suitable clothes for the open moor in February
and should have a detailed map of the area,
a compass, torch, food and drink, and loud
whistle! At least one of the team must have
basic navigation, compass and map reading
skills.*



Group Travel

Dunmere Road Garage, Dunmere Road, Bodmin Cornwall PL31 2QN
Email: benneymoon@btinternet.com

EXCURSIONS 2014

31st Mar– 5th April	Welsh Experience
12th April	Cribbs Causeway
25th April	Mariazion. Penzance and train to St Ives
9-13th May	Dutch Bulb fields Keukenhof Gardens and Floriend B & B
10th May	Badmington Horse Trials
20th May	Adams Farm as in BBC Countryfile
21st June	Exmouth to Exeter Canal Cruise
5th July	South West and Wales Truckfest 3 counties ground

FOR BOOKINGS AND BROCHURE
PLEASE CONTACT 01208 77989/ 01208 72669

More details on www.grouptravelcoachhire.com



PVCu WINDOWS & DOORS CONSERVATORIES KITCHENS & BATHROOMS
GLASS BALUSTRADES BUILDING SUPPLIES

Kings Hill Industrial Estate, Bude EX23 8QN www.kjbromell.co.uk 01288 357020

- ◆ we manufacture, supply and fit double glazed PVCu windows, doors and custom designed conservatories
- ◆ we design and supply beautiful, functional kitchens, bathrooms and wet rooms to help you create your ideal home
- ◆ open up the view from your patio or balcony with glass balustrading supplied and fitted by our skilled craftsmen
- ◆ at our site in Bude we have a large building supplies shop – open to both trade and the public.

Come and see what we have to offer!

Community Shop Project

Rev. Anne Brown, Vicar at St Paternus Church

Things are progressing on the community shop front, albeit quite slowly, as Christmas has rather disrupted plans. An open meeting about the Community Shop was held in mid-December in the church. Fourteen people attended, with another dozen offering their comments prior to the meeting. The meeting discussed the shop concept and were shown the proposed position, which is at the rear corner of the church. The area is currently used as a storage area, but had been used in the past as a choir vestry. All those present at the meeting supported the concept.



There was also a meeting with the Diocesan Advisory Council, who are responsible for any changes which occur within Anglican Churches. They have agreed that providing the work carried out is in line with their recommendations they can see no problem with the shop being situated in the church in the area designated. It is envisaged that the shop will be run by volunteers but managed by a paid manager who would look after stock control and banking.

I have met with the Parish Council, who are supportive of the overall plan and felt that a community shop would enhance the village. All that aside, now the real work needs to begin, and help is needed. We need to carry out a village survey, which will happen in the next couple of weeks; would you be willing to help? We also need to draw up a business plan, so we know where we are going. I have no experience of doing this, so can anyone help as without it we will not be able to get any funding.

I am unable to carry the responsibility for this project alone, so a committee needs to be established to move the project forward. Do you have any experience that could help or have a passion to see this project succeed? If so please contact me. If no one does, the project will go not forward. So please contact me, without your help, this project will remain just that, a project, a nice concept, a pipe dream but with your help it could be a wonderful community resource in the heart of our village.

For further information or to offer help and support
contact Rev Anne Brown on 01566 770649
or email threeriversteam@btinternet.com



Fond Farewells to Fran

By Michael Screech
South Petherwin Parish Council

I was one of the interviewers' when Fran Dennison applied for the post of Parish Clerk in the Autumn of 2000. Fran stood out as being an excellent candidate, as she had been the Clerk of Lostwithiel Council, for the previous twelve years, prior to moving to Winstead House.

Fran initially said she would commit to being our Clerk, for three to four years if possible.

Thirteen years later she has now decided to take retirement. She has been a fantastic, unbiased and fair Clerk, keeping the councillors in order, giving advice and keeping everyone up to date with all the necessary information, doing her best to keep the Parish affairs in order.



I think Fran's speciality is knowing when, where and who to contact at County Council level given that she has twenty five consecutive years dealing with anything from pot holes, fly tipping, dog bins, planning Issues, bridge repairs, wind turbines, public toilet and footpaths just to name a few of the issues..

Fran has seen off all the other council members in her time except me. I'm not sure what that means! At her last Council meeting in December 13, all the Councillors' thanked her and gave her a small gift in appreciation for all the work she has done for the Parish and wished Fran and her husband Dick, all the very best in their retirement wherever it may be when they move.



"Great British Fish and Chip Supper – Friday 16th May 2014

Want to eat Fish and Chips, while raising money for charity? Hold a fish and chip supper on Friday 16th May 2014 whilst raising awareness of spinal cord injury and supporting SIA's vital services. You can hold a fish and chip supper in your own home, at work or hold a larger supper at your local community centre.

SIA will provide a fundraising pack containing hints and tips, recipes, invitations and donation envelopes. For more information or request a fundraising pack call Elizabeth Wright on 0845 071 4350 or email fundraising@siafishandchips.co.uk or visit www.siafishandchips.co.uk



We are celebrating our 15th year as ESG Boilercare and our 15th year as part of the South Petherwin community.

And with no plans of going anywhere, you'll be pleased to know we'll be keeping you warm for many winters to come.

Paul, Maggie and the team.

Tel: 01566 782 789
www.esgboilercare.co.uk

Services & Repairs – Oil Boilers & Cookers – Breakdowns repaired in one visit



Ruby's Garage



Car, 4x4 & Light Commercial

Sales, Service & Spares

Your local family owned independent garage for over 40 years
Specialising in advanced vehicle technology

- Servicing and MOT facilities
- Workshop equipped with latest all makes Diagnostic Equipment
- Competitive prices on Tyres, Batteries and Clutches
- Specialist in 4x4's with wide range of spares currently in stock
- Suppliers of new and used Cars, 4x4's and Light Commercial
- Full bodyshop facilities including insurance work carried out
- Air Conditioning checks and servicing carried out

For more information or advice, contact us by the following:
TEL: **01566 782402/782536** FAX: **01566 782741**
e-mail: brubys@aol.com or visit us at www.rubysgarage.co.uk

Christmas events in the Methodist Chapel



A very successful Christmas Coffee morning was held on 7th December when we were delighted to welcome Mr John Gillbard who launched his new book 'South Petherwin-Past and Present'. John was born at Pollinick Farm and it had been his dream for many years to produce a book about the village and surrounding area. He did a roaring trade with his new book with people coming from far and wide to make a purchase. We were kept extremely busy serving tea/coffee, as were the ladies manning the stalls. New acquaintances were made; some people had not met for many years. We were very grateful to all the helpers.



On 16th December over 30 Lunch Club members sat down to enjoy their Christmas Lunch and tucked into Roast Turkey and all the trimmings, followed by a choice of Christmas pudding, fresh fruit salad or trifle with tea/coffee and mince pies. Rev E Reddington then led a short Carol service accompanied by Mary Stoneman on the keyboard. A hearty rendition of 'We Wish You A Merry Christmas' concluded the afternoon. Donations were invited for 'The Mustard Tree Macmillan Centre' at Derriford hospital and a collection of £150 was made.



On Friday 20th December Rev E Reddington led the South Petherwin Primary School's Christingle Service held in the chapel on the last day of term. Our Christmas celebrations concluded with a very well attended Parish Carol service which was held in the beautifully decorated chapel on Sunday Evening 22nd December led by Rev E Reddington. We were set a memory test by singing some Carols by candlelight! Mr John Whale was the organist, Tea/coffee and mince pies were served following the service and a sum of £120 from the collection was forwarded to Marie Curie Cancer Care.

Jonathan Blake Money Management

Jonathan Blake lives in South Petherwin and offers personal service and access to uncomplicated independent financial advice.

Jonathan Blake Money Management Limited
Unit 1, Holwood Business Centre Blunts, SALTASH
Cornwall PL12 5DW

Tel: 01752 851748 Mobile: 07970 011651

**E-mail: info@jbmm.co.uk
www.jonathanblakemoney.co.uk**

Jonathan Blake Money Management Limited is authorised and regulated by the Financial Conduct Authority.

GEORGE BATEMAN

*Property Maintenance
Small Building Work, Interior & Exterior
Decorating, etc. No Job too Small*

Tel: 01566 773752

Mobile Foot Care

Sally Isaac S.A.C. Dip. FHPT/FHPP

**Gentle and professional
foot care in the comfort
of your own home**

*If you suffer discomfort from
corns, callus, ingrown toenails,
cracked heels, thickened nails
etc. or just have difficulty cut-
ting your toenails give me a ring*



Telephone Sally on 07961 076 168

First World War Centenary

2014 marks the centenary of the outbreak of the First world war. Roger Pyke Phil Parsons and the Parish Magazine are planning to mark the centenary by gathering stories and mementoes of those in the Parish who were affected by the war. Phil Parsons asks for your help in this.....

Family Memories of the First World War

This year, South Petherwin Parish will remember the lives of the young men who served their country during the 1914-1918 First World War. Roger Pyke and myself have been gathering local stories about soldiers from this Parish, both those that died and those who returned, and want to collect as many stories as possible. So if you have a family member who served or has a memory of the war then please let us know. You may have a picture or memento. For example a WW1 shell (shown right) with the Ypres cathedral embossed on it was found at West Petherwin Farm in a hedgerow. Was it a memento sold to raise funds for WW1 war veterans or brought back by a serving soldier? We would hope to display as much information gathered to date and add more from your memories. Full details of venue and date in the next months magazine. Contact Phil Parsons Tel 01566 777179 email philp653@gmail.com.



A Young Soldier's bible



In the last issue of this magazine, Roger Pyke wrote about a lady who had contacted the Village website regarding a bible she thought may have belonged to Horace Westlake. Horace was a young soldier, from South Petherwin, who had been killed in the battle of Loos in 1915 aged just 19. His name is on the village war memorial. The bible had been found on the battlefield and the inscription though faded indicated it had been presented by the Wesleyan chapel in 1906. It was unknown whether Horace still had relatives in this area.

Following this article, Roger was contacted by Myra Ellacott who was Horace Westlake's niece. Myra lives in Launceston but belongs to the village skittles group and was pleased to see the article about the bible. Horace died before Myra was born but she remembers her mother,



NEVILL HOVEY & CO LTD
CHARTERED ACCOUNTANTS

Tim Smith FCA CTA

Southgate Close, Launceston, Cornwall PL15 9DU

Telephone: (01566) 772109 Fax: (01566) 772072

Email: tim@nevillhovey.co.uk

www.nevillhovey.co.uk

Adrian Davey Painting & Decorating

Exterior & Interior Painting, Wallpapering

Home 01566 780477 Mobile 07729500390

NIC PARKER



Mobile
hair-
dresser

Fully Qualified
over 20 years experience
Competitive rates
Ladies, Gents and Children



Tel; 01566 772393
Mob; 07816 183125

36 Trelinnoe Gardens South Petherwin



Fully Insured Lady Gardener
RHS Level 2 Certified

Do you need extra help to keep
your garden just the way
you like it?

Whether it's regular appointments or a particular garden project, I offer:
Planting and care of beds, border & Containers, design and re-design ideas, weeding, digging and general tidying, pruning and cutting down, lawn and hedge cutting

07968 170130



South Petherwin Allotment Gardeners

Well it continues to be quite a winter doesn't it? No snow yet, but an opportunity at least for allotment holders to brush up on carpentry skills on account of sheds, hen coops and fences all flung wildly into the hedgerow, hiked out and hammered together again, as if the scene reminiscent of the wizard of Oz had never happened. Most notably on Christmas eve... as dusk was falling and the chickens scratched and clucked contentedly in the mauve half light I made out the muted, rasping, lonely sound of a tenon saw and heard the words: "perhaps we didn't need to replace that roofing felt after all". Well, a bit like that anyway.



The main news is, after a successful grant application to the 100 club we were able to plant a considerable edible wildlife hedge so a great many thanks to all involved. Looking forward to watching it grow, create a good windbreak, provide natural protection and food source for animals and hopefully a few jars of preserves and cordials to boot. There is much work to be done and the storm did do a little damage so if anyone does happen to have some roofing felt redundant in the back of their garages we could make good use of it.



AGM is coming up, now is the time to contact us if you are interested in a full, half or quarter size plot. Look forward to seeing you there!
southpetherwinallotments@gmail.com,
07943 699208.

Abi Caine, SPAG.

Gwen, talking about him and says that as brother and sister they were very close. After Horace went to war the family were worried they didn't hear from him. Gwen wrote to Horace expressing her concern and begging him to write to let them know he was safe. Myra says that the whole family were devastated to learn of his death but her mother Gwen was particularly affected.



Myra Ellacott



The bible which may have belonged to Horace Westlake

Gwen and Horace's letters can be seen on the website; a poignant reminder of the pain and grief many families experienced during the First World War. Phil Parsons and Roger Pyke are taking steps to confirm the authenticity of the bible and Myra is hopeful it will then be returned to her family.



Robert Graves

WW1 poet and soldier

The Soldier

If I should die, think only this of me:
That there's some corner of a foreign field
That is for ever England. There shall be
In that rich earth a richer dust concealed;
A dust whom England bore, shaped, made aware,
Gave, once, her flowers to love, her ways to roam,
A body of England's, breathing English air,
Washed by the rivers, blest by suns of home.

And think, this heart, all evil shed away,
A pulse in the eternal mind, no less
Gives somewhere back the thoughts by England given;
Her sights and sounds; dreams happy as her day;
And laughter, learnt of friends; and gentleness,
In hearts at peace, under an English heaven.

Rupert Brook



Parish Diary - Regular Events

Organisation	Details	Contact
Parish Council Meeting	Second Wednesday in the month 7.30 pm, Village Hall	Clerk: Alan Brook 777183
St Paternus C of E	Service 11.15 am	Wardens: Valerie Adams; Debbie Adams 774244
Methodist Chapel	Morning Service 11 am	Steward: Tony Smith 782204
Prayer Group	Every other Wednesday	Muriel Parsons 773027
Lunch Club	Last Monday in month (unless Bank Holiday)	Tony & Wendy Smith 782204
Knitting	Most Thursdays 2 pm, West Petherwin Farm	Muriel Parsons 773027
Bimbos	Every Monday (except when Lunch Club or Bank Holiday)	Vi Brook 779243
Pre-School	Mon-Fri 9-12am, lunch club 12-1pm; afternoons Mon, Tues, Thurs 1-3pm; toddlers Fri 1.30-3pm (term time only)	Rachel Jefferys 779476
Bell Ringers	Mondays, 7.30 pm practice	John Atkinson 774264
Skittles	Tuesdays 7 pm, Village Hall	Vi Brook 779243
Bingo	Last Wednesday of each month, 2pm Village Hall	Derek Pitman 779612
Mobile Library	Tuesdays 12.25-12.40 pm Village Pump	Tues 29/1/13 and every alternate Tuesday

The Little Red Bus (Launceston Community Transport Partnership) covers South Petherwin area on Thursdays. For information, ring 777960

Village Hall: To hire hall, contact Sue Vernon 772640

Methodist Hall To hire hall, contact Wendy Smith 782204

Oil Syndicate Contact Sue Vernon 772640

YOUR PARISH COUNCIL

The Parish Council meets on the second Wednesday each month at 7.30 pm in the Village Hall. It is open for anyone to come and listen in.

Parish Councillors are:

Chairman: John Whiting

Clerk: Alan Brook 777183. spparishclerk@icloud.com

Councillors: Terry Goodman, Phil Parsons, Michael Screech, Andrew Hosking, Dawn Rogers, Mary Tyler, Chris Goodman, Adrian Finnimore, Roger Kneebone

Cornwall Councillor: Neil Burden 01566 782286 nburden@cornwall.gov.uk

South Petherwin School News



Happy New Year to you all!

This term is already off to a busy start. Our head teacher Mr. Gray has taken on a temporary executive headship at Egloskerry School and is splitting his time between the two schools. South Petherwin is in the capable hands of Mrs Little and Miss Wills in his absence. After fourteen years as a teacher and governor, Mrs Evans has taken up a post as a Mentor at Plymouth University. She will be missed and has greatly contributed to many children's education. We wish her every success. In her place Mr. Tucker has temporarily taken over Class 3. We welcome him and Mr. Jones (part time P.E) and Mrs. Mengal-Smart (part time Maths and PE) to our school.

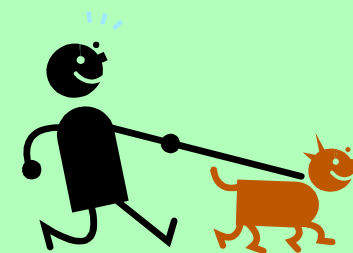
This term we have lots of exciting topics;
Reception and key stage 1 - Caring for our world
Key stage 2 - India

Please feel free to come and see the school or let us know if you have any skills you could share with us.

Helen Masters

Dog walking in the countryside

South Petherwin provides a range of dog walking places. On the flat, out to the school and around the island or down past the pub. For those who enjoy a longer walk; past the church, through the kissing gate, and down across the field following the public footpath, into the wood. However there is a need for a note of caution as just before Christmas a dog was caught attacking a sheep in the field. Thankfully the owner called it away before any serious harm was caused.



The farmer, Mr Parsons, wishes to highlight the need for dog owners using the footpath to keep their dog on a lead. He said "No doubt there is a temptation to let the dog off the lead at the entrance to the field. Or to stop at the gate and watch the dog run around the field, but having recently seen the effects of a dog attacking my sheep just before lambing I would ask dog owners to keep their dogs on a lead while crossing the field and follow the footpath. Thank you to the owners who already do this."



Dowson's
PLUMBING & HEATING
ENGINEERS

GAS – OIL – LPG
BOILER INSTALLATION /SERVICE
& REPAIR - OIL TANK INSTALLATION
GENERAL PLUMBING
BATHROOMS - WET ROOMS









ALSO

TEL: 01566 880 123

**COME VISIT OUR
BATHROOM SHOWROOM**

AT KENNARDS HOUSE (OPPOSITE TRETHERNE LEISURE FARM)

LOVATON BOARDING CATTERY

Feline Advisory Bureaux Listed Cattery

Daws House, Launceston, PL15 7JF

Home from home holiday for your cats, run by a qualified

Veterinary Nurse; pick up and delivery service available.

Modern purpose built PVC cattery, deluxe heated penthouse chalets

Please ring Andrea for more information on 01566 778501 or email

andrea@lovatoncattery.co.uk or visit www.lovatoncattery.co.uk



CHRIS LYLE PLASTERING

& PROPERTY MAINTENANCE

TELEPHONE: 07861783082

www.chrislyleplastering.co.uk chrislyleplastering@yahoo.co.uk

As your local, time served plasterer I offer a full range of plastering services that include: Traditional plastering-Plasterboarding-Lime plastering-Tyroleam application-External render-Internal and external painting-Damp proof plastering-Dry lining

**25 YEARS EXPERIENCE—FREE QUOTATION—RECOMMENDATIONS
AVAILABLE—MEMBER OF GUILD OF BUILDERS & CONTRACTORS**

Parish Diary - Special Events

<i>date</i>	<i>Details</i>	<i>Contact</i>
Sat 8th February	Coffee morning. Methodist Hall. 10.30	Tony Smith 782204
17-21 February	School half term	SP School 776363
Mon 24th February	Lunch Club Methodist Hall. 12.30	Wendy Smith 782204
Sat 8th March	Coffee morning. Methodist hall.10.30	Tony Smith 782204
Mon 31st March	Lunch Club. Methodist Hall, 12.30	Wendy Smith 782204

Recycling Collection dates; Both rubbish and recycling are collected on a **WEDNESDAY**. Rubbish is collected every week; recycling and garden waste (for subscribers) on alternate weeks. Next Recycling dates will be Wed 29th Jan, 12th and 26th Feb, and 12th March
Helpline number-; 0300 1234 141

SOME USEFUL TELEPHONE NUMBERS

Emergencies: Police Ambulance Fire Brigade Coastguard 999

Environment Agency—Floodline	08459 881188
Environment Agency—Emergency Hotline	0800 807060
Transco (Gas Emergency Service)	0800 111999
South West Water	0800 169 1144
Western Power Distribution	0800 365900
Police (Non emergency-general Enquiries)	101
Crime stoppers	0800 555111
Citizens Advice Bureau Launceston (9am-noon)	01208 264691
Community Police Officer Clare Danson	01566 771419
Rev Anne Brown –Vicar (Cof E)	01566 770649
Rev Eleanor Reddington– Methodist Minister	01566 782240

Ifor Williams Trailers

DISTRIBUTORS COVERING
CORNWALL AND DEVON

**SALES • HIRE
SERVICE • REPAIRS**

'OVER 100 TRAILERS IN STOCK' www.prjengineering.co.uk

PRJ ENGINEERING LTD
TEL (01566) 782794
TEL (01566) 782794

Do come and see our extensive range of Children's Farming Toys
THE TRAILER CENTRE, Nr LAUNCESTON PL15 7QH
(4 MILES FROM LAUNCESTON ON THE B3254 TOWARDS LISKEARD)

JAMES WILLIAMS CARPENTRY

Bespoke Storage Solutions
Window & Door Replacement & Repairs
Kitchens & Bathroom Fitting
Hanging Doors
Plastering Flooring Tiling

We take pride in our excellent reputation to please our customers through hard work, precise workmanship and good housekeeping.

Please check out our website
www.jameswilliamscarpentry.co.uk

T: 01566 248308 M: 074113 77720

VILLAGE HALL
committee members urgently required!

The village hall committee is urgently in need of more members. The village hall is a charity and without sufficient support from the village it could ultimately have to close its doors. We do need to ensure its future by having an enthusiastic and supportive committee.

It is not an onerous job - we do not have many meetings in a year and they do not last too long.

Please consider whether or not you could support the hall in this way, and if interested, please ring Sue Vernon on 772640



David Elcock

PLUMBING & HEATING

**Tel: 01566 774249
Mobile: 07977 041905**

Trevale,
Daws House,
Launceston,
Cornwall
PL15 7JE



Andrew Hosking

Springfield
Tregaller Lane, Daws House
Launceston, Cornwall
PL15 7JH

**Tel 01566 772537/
775818**

Designer & Maker of
Quality Furniture & Joinery