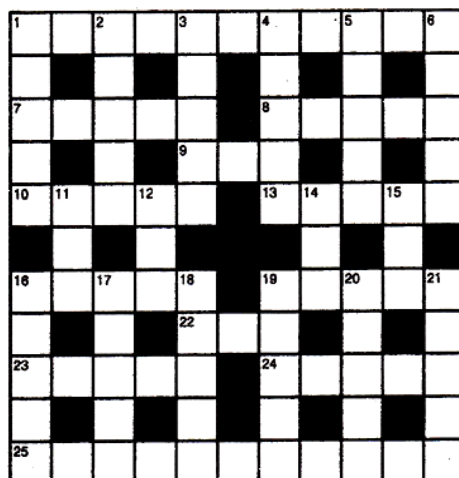


CROSSWORD

ACROSS

1. Cornish Sth Coast Resort (6 -4)
7. Out of sorts (5)
8. Belly ache (5)
9. Before (3)
10. Alpine Province (5)
13. Honey badger (5)
16. Waste filings (5)
19. Ascend (5)
22. Night Hawk (3)
23. Degrease (5)
24. Killer whales (5)
25. Cornish Sth Coast water (8- 3)



DOWN

- | | |
|-------------------------------|--|
| 1. St Michael's Horse (5) | 14. Shoemaker needs this tool by law (3) |
| 2. Forever a prisoner (5) | 15. A Lost tree (3) |
| 3. Short knowledge (5) | 16. Graze abrasion (5) |
| 4. So Much Better (5) | 17. Coral Island (5) |
| 5. Towel for the baby (5) | 18. Page number (5) |
| 6. Better than ever (5) | 19. Hit hard (5) |
| 11. The way a plane moves (3) | 20. Taxi drivers seat (2- 3) |
| 12. Posh Paddle (3) | 21. Domineering (5) |

Answers on page 26

Parish Magazine Committee

Helena Northmore (778744, hmnorthmore@yahoo.co.uk),
Phil Parsons (777179), Derek Pitman (779612), Cherry Pyke (776998),
Sue Vernon (772640), Peter Northmore (778744), Vanessa Elcock
(774249)

Advertising rates are as follows, for a full year (six issues): quarter page: £30
— half page: £60 — full page: £120 Please speak to Vanessa Elcock (774249).
Personal announcements are free of charge.

Copy for the next issue of the Magazine should be given to a member of the
editorial committee not later than **3rd September 2013**. (Please remember
to attach your name and telephone number in case of queries.)

South Petherwin Parish Magazine



Issue No 56

July 2013

GEMMA KICKS FOR GLORY!

It's countdown time to the 2013 Deaflympics and South Petherwin's Gemma Sanders will be flying the flag for Great Britain in the Sofia Stadium Bulgaria with the England Womens football team. Gemma's proud that she is the only player from Cornwall or indeed from the whole of the South West of England!

She has been training hard with the GB team all year and has played against teams all over the country including the Arsenal Womens football team. Gemma wishes to thank the Parish Magazine and the Village Hall Committee for their grants and support.



Gemma receives a cheque from the Magazine committee

She told the Magazine " It's a huge relief to have all the funding in place. I want to say a big thank you to all my family and friends and everyone who has sponsored me. Without them, I wouldn't be going. I fly out on the 22nd of July and expect to play Russia or Germany on the 24th. I can't wait!"

There are seven countries in the football tournament including Germany, Japan, Poland and the USA. They all have strong teams which should make for some great football. If you want to keep up to date on the progress of the GB football teams, then go to www.deaflympics.com, or www.ukdeafsport.org.uk/deaflympics.

GOOD LUCK GEMMA! WE'RE RIGHT BEHIND YOU!



Community Benefit

At the Annual Parish Meeting on 5th June, concern was expressed regarding the make up and functions of the Community Benefit trustees. At the well publicised and well attended public meeting held in February, volunteers were asked to come forward to act as trustees to oversee the distribution of money received from the operators of the wind turbines erected in the Parish. Seven people volunteered, and these members of the community together with the Chairman and one other member of the Parish Council now form the trustees. The chairman of the Parish Council is John Whiting, the second member from the council is Mary Tyler and the other trustees are: Jonathan Blake, Sally-Anne Freestone, Tim Grey, Rachel Jeffery, Peter Northmore, Chris Powlesland and Tony Smith. These trustees come from all parts of the Parish and represent all age groups.

The delay in the setting up the trust was caused by the local council elections. It was not known until May whether or not the Parish Council would have an election and therefore who would be on the council and who the chairman would be. The Charity Commissioners have now been contacted and the procedure of being accepted as a charity is underway. Everything should be sorted out very soon.

Fran Dennison Parish Clerk

Morrison's Development

Following two years of discussion, the planning application for the new Morrisons supermarket development with a pub and fast food restaurant has gained planning approval. The Cornwall Council Strategic Planning Committee heard representation in support of the application from the Stourcombe Resident Association and South Petherwin Parish Council. Launceston in Bloom spoke against the application and the councillors discussed a number of issues of concern including the trees, impact on the CO-OP and town centre and the listed building at Badash Farm. The local Cornwall Councillors raised their concerns in relation to the widening of the B3254 above the Slate Quarr, flooding, and the opportunity of new jobs. In a vote, the application was supported by twenty members of the committee with one against. It is too early to give an indication as to when any development will begin but if and when it is made available we will keep our readers informed.

Phil Parsons, Parish Councillor

Where's Neil?

Attempts by email and telephone to contact Neil Burden, our new local Cornwall Councillor, to ask for a few lines on how he intends to represent us have gone unanswered. A pity really as interest in all forms of political elections is diminishing and generally local turnout is poor. We would welcome his views particularly about the wind turbine applications.



Winds of Change

South Petherwin Launceston, PL 15 7LP
Tel: 01566776988 Mob: 07768 116691



The Inn place for all your catering requirements

An extensive bar menu 7 days a week serving a full range of home cooked meals from ham salad to steak with all the trimmings. After a day out why not come on in for a plate of fresh cod n' chips. Serving **REAL** food and using fresh local produce.
Open Daily for Lunch and Evening Meals

Sunday Carvery 12 noon to 2:30 pm

Booking advisable for Sundays Remember, you meet the best people in The Winds of Change.

Visit our new website, www.thewindsofchange.co.uk

HOUSE AND GARDEN WOODCRAFT

Multi-skilled tradesman with over 30 years experience: professional carpenter and joiner-general household maintenance-bespoke handmade household & garden furniture-kitchens and bathrooms-small household plumbing jobs



Looking for an honest worker and a reliable friendly service?

If so, call Arthur Philp on
**01566775289 or
07890104755**



Fully Insured Lady Gardener
RHS Level 2 Certified

Do you need extra help to keep your garden just the way you like it?

Whether it's regular appointments or a particular garden project, I offer:
Planting and care of beds, border & containers, Design and re-design ideas, Weeding, digging & general tidying, Pruning & cutting down, Lawn & hedge cutting

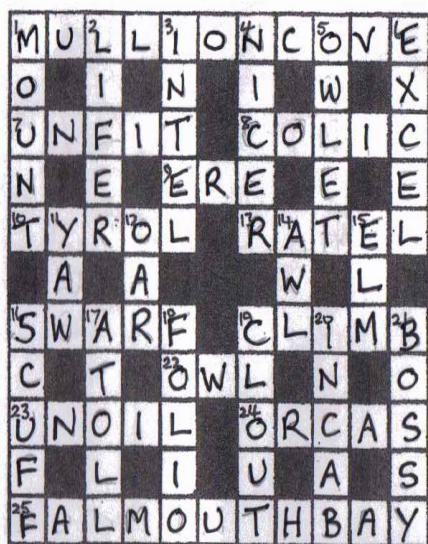
07968 170130



SERVICE & REPAIR
Exclusively for Oil Boilers and Cookers
01566 782 789
www.esgboilercare.co.uk

With thanks to Maggie and Paul from ESG for their generous donation to the Magazine this month

Solution to Crossword on page 28



Our Magazine....

Our magazine is totally dependent on people sending in entries about anything that's happening in the Parish.

Please tell us about any events in the village or in your family life, any funny stories or memories of time gone by.

Either email or ring me or speak to any of the magazine committee (details on the back page) and we'll do the rest!

Helena Northmore, Magazine Editor.
 01566 778744
hmnorthmore@yahoo.co.uk

Robots in South Petherwin !

Despite the financial difficulties being experienced by dairy farmers these days, two local farmers are bucking the trend and starting up new dairy businesses. They have recently installed robotic milking machines and one of them, Jimmy Tucker of Larrick Farm, says the early indications are that the gamble will pay off.

He currently has 56 Holstein Friesian cows which effectively milk themselves! Each cow has a computerized tag which is scanned each time the cow enters the milking stall in the hopes of food. The computer allows each cow to be milked a maximum of five times a day, with a minimum time elapsing between feeds of 4.5 hours. The food bins don't open if the cow has returned too quickly or milk if the cow has exceeded her quota. A robotic arm is guided to the udder by lasers, sprays a wash over the teats and then guides the milking cups onto them. In a matter of minutes the cow is milked and released from the pen, to be quickly replaced by another eager cow looking for food and the relief that milking brings. The cattle actually queue up!!!



The computer registers every detail about each cow's time in the milking pen, and provides a wealth of information to Jimmy, not only logging facts and predicting yields, but also highlighting possible problems or any indications of ill health. The milk is then passed into a tank from which it is collected every two days.

As this is the cows' first year with the robot, they are being kept in the shed until they are used to the system instead of grazing the fields, but this is not as unkind as it sounds. There are individual stalls for each cow, each with a 'mattress' of crushed rubber covered in sawdust. The shed is built over an eleven foot deep slurry pit, with slats in the concrete floor, so that the cows are never standing in any appreciable muck. Should we have yet another wet summer they will be a lot more comfortable and dry than they would be out in the rain and the mud.

Sue Vernon

**Castle Veterinary Group
Limited**

Pennygillam Way
Launceston
Cornwall PL15 7ED
Farm Tel: 01566 772371
Pets Tel: 01566 772211
Fax: 01566 777465



**Castle Veterinary Group
Limited**

Unit 1, Down Farm
Lamerton
Nr. Tavistock
Devon PL19 8QA
Tel: 01822 612779

Open Hours: Mon-Fri 8.30am-6.30pm
(Farm closes 5.30pm) Sat 8.30am-12.30-
pm Closed Sunday Consultations by
appointment only

Open Hours: Mon-Fri 3.00-4.00pm
Closed Sat & Sun

Consultations by appointment only

Nurse clinics: we offer free appoint-
ments with qualified nurses for checks
regarding teeth, weight and adolescence.
Alternative therapy **Acupuncture**.

Puppy parties: a 4 week course for
invited puppies. Subjects covered are
socialisation and diet, vaccinations and
neutering, home care and parasites.



EAT THAT FROG
COMMUNITY INTEREST COMPANY

**Computer Courses
Maths & English Courses**

All ages (18+) and abilities welcome
Nationally recognised qualifications
Highly subsidised/free courses

The Old National School, St Thomas Road,
Launceston, PL15 8BU
Please call us on: 01566 778547

Free Parking & Free Taster Session available



Specialist manufacturer of top quality sheds,
stables, summer houses, garages, gates and
fencing at sensible prices, made to your re-
quirements

Lower Landlake, Launceston,
Cornwall PL15 9LU. **Tel-01566 774791**

Megan's Home Cleaning
Your friendly local service

- Domestic Cleaning &
In-house chore's -

☎ (01566) 77 33 96

☎ 07748 474 323

✉ MegansHomeCleaning@ymail.com



**R Mears & Sons
Chimney Sweeps**

Established over 30 years

Vac Brush. Full CCTV investigations.
Pots, Cowlings & Bird Protection fitted.
Solid Fuel Appliances, Rayburns,
Woodburners, Stoves etc serviced.
Fully Insured.

Tel: 01840 261221
Mob: 07737 533392
www.sweepcornwall.com



South Petherwin Cricket club fixtures for 2013

First Team		Date	Second Team	
Wadebridge 2	Away	27th July	St Newlyn East	Home
Boconnoc	Home	3rd August	St Austell 4	Away
Tintagel	Away	10th August	Saltash 2	Home
Ladock	Home	17th August	Boconnoc 2	Away
Veryan	Away	24th August	Lanhydrock 2	Home
Bude	Home	26th August	Bude 2	Away
Bugle	Away	31st August	Callington 4	Home
St Stephen	Home	7th September	Wadebridge 3	Away

South Petherwin Website

Catch up on all the latest parish news and information! Visit the website at :<http://www.southpetherwin.com>.

Launceston Memory Café

www.memorycafelaunceston.org.uk



The Launceston Memory Café, which offers support for those living with dementia, both the sufferers and their carers, is growing in numbers. Because of this the café would like to recruit more volunteers. They would be happy to hear from anyone interested in helping with the café sessions, held on alternate Saturdays 2-4pm at Central Methodist Church hall in Launceston.

Please contact Cym Downing on 01566 774425 or Pauline Smith on 01566 775557. Further information on the Café can be found at www.memorycafelaunceston.org.uk

Reg Charity No 1139639

SPAG –The First Crop

Most people would recommend little and often in relation to gardening and especially allotments. I generally like to spend at least two weeks pretending it isn't there, then immerse myself for a whole weekend unable to think of doing anything else. So it was this weekend: I only stopped when my teabags ran out. Right now, there are potatoes coming into flower, beans struggling in windblown determination up their bean poles, and broad beans worrying about amiable bee friends turning up in sufficient quantities to fill their pods to bursting. I like to have time to lean on my spade and watch a bumble on the bright mustard of a parsnip flower.



The first contented hour on my allotment was spent prying caterpillars from their yellowing nettle home and plastering them happily onto a healthier crop, for these were obviously peacocks (or is it tortoiseshells) and welcome. Having accumulated sufficient stings to stave off arthritis for ever, I unearthed a leathery beast.

Nursing the writhing thing in my gloved hand I embarked on a journey up the plot to ask Sue Wildman for identification, only to be halted by some small frantic movement to my left. A young sparrow was caught in fruit netting. Some moments



later with the deftness of a surgeon the sparrow was sufficiently free to give Sue a sharp nip on the finger. Every trace of the netting was removed and the sparrow was noisily gone.

I realised that perhaps the reason for my taking on this humungous supersized plot that could feed my little family x 10 was actually to be cultivating plants to attract butterflies. NOT cabbage whites, I hear the sharp intake of breath, but orange tips, red admirals, peacocks, commas and painted ladies. How? Well I know that orange tips require ladies smock, a delicate pink wild flower to survive, and that tortoiseshells or maybe peacocks require nettles to lay their eggs on and devour in the form of caterpillars; I need to find out the rest. If anyone has any information or interest please get in touch. If you see a fritillary it might just be coming from SPAG.

Finally tools stowed, dog ready for a cool kitchen floor and a hearty bone, I noticed with satisfaction the mornings caterpillars were pulling the sides of their little nettle leaf beds together with their downy strings. Next instalment; natural swimming pools, goats or not, and a quiet plan to turn the shed into a sauna.

Abigail Caine South Petherwin Allotment Growers. Enquiries re plots to southpetherwinallotments@gmail.co.uk or 01566 782639



Keep the sea on your right and follow the yellow signs.

(Or how I started walking the coastal path and kept on walking!)



With my three boys all grown up, I decided to walk the Cornish Coastal path. Something I had always wanted to do. Now, I can't think why I waited so long! I started at Welcombe Mouth, north of Bude, and walked to Marsland Mouth on the Devon/Cornwall border. From there down to Port Gavern was probably the most strenuous part of the whole walk. So if you get this far, keep going because the views are amazing and you will find beaches you would never see or hear of, if you weren't walking the coast path.

After a few days walking I persuaded Dave my husband, that I needed a campervan. (Not essential but great fun!) I did a lot of the walk on my own but Dave and friends and family joined me for some of the walks. It gets a bit complicated if you are on your own. I would normally leave the campervan at the end of the days walk and then catch a bus back to the start. This can be a bit of a nightmare as coastal parking can be expensive but Google maps help with free parking sites. The other problem

you come across is rivers. Sometimes there is a ferry but you can guarantee the tides are wrong when you arrive or it only runs in summer, or it may say wade across at low tide, so I always tried to finish a days walk at a river and then start the other side the following day.

I used "Walk the Cornish Coastal Path" by John H.N. Mason. It's a great flip over guide book with the whole walk split into sections marked easy, moderate, and



Ruby's Garage



Car, 4x4 & Light Commercial

Sales, Service & Spares

Your local family owned independent garage for over 40 years
Specialising in advanced vehicle technology

- Servicing and MOT facilities
- Workshop equipped with latest all makes Diagnostic Equipment
- Competitive prices on Tyres, Batteries and Clutches
- Specialist in 4x4's with wide range of spares currently in stock
- Suppliers of new and used Cars, 4x4's and Light Commercials
- Full bodyshop facilities including insurance work carried out
- Air Conditioning checks and servicing carried out

For more information or advice, contact us by the following:

TEL: 01566 782402/782536 FAX: 01566 782741

e-mail: brubys@aol.com or visit us at www.rubysgarage.co.uk

David Elcock

PLUMBING & HEATING

Tel: 01566 774249
Mobile: 07977 041905

Trevale,
Daws House,
Launceston,
Cornwall
PL15 7JE



Andrew Hosking

Springfield
Tregaller Lane, Daws House
Launceston, Cornwall
PL15 7JH
Tel 01566 772537/
775818

Designer & Maker of
Quality Furniture & Joinery

Group Travel

Dunmere Road Garage, Dunmere Road, Bodmin Cornwall PL31 2QN
Email: benneymoon@btinternet.com

EXCURSIONS 2013

3rd August	Newton Abbot Races
4th August	Gatecombe open/intermediate British Festival of the Horse
9th August	Grand Heritage Cruise
14th August	British World Firework Championships Plymouth
7/8th Sept	Burgley Horse Trials weekend
21st Sept	Haynes Motor Museum
9th October	Tavistock Goosey Fair
18th October	Daniel O'Donnell, Plymouth Pavilions

FOR BOOKINGS AND BROCHURE
PLEASE CONTACT 01208 77989/ 01208 72669

More details on www.grouptravelcoachhire.com

KJ BROMELL

PVCu WINDOWS & DOORS CONSERVATORIES KITCHENS & BATHROOMS
GLASS BALUSTRADES BUILDING SUPPLIES

Kings Hill Industrial Estate, Bude EX23 8QN www.kjbromell.co.uk 01288 357020

- ◆ we manufacture, supply and fit double glazed PVCu windows, doors and custom designed conservatories
- ◆ we design and supply beautiful, functional kitchens, bathrooms and wet rooms to help you create your ideal home
- ◆ open up the view from your patio or balcony with glass balustrading supplied and fitted by our skilled craftsmen
- ◆ at our site in Bude we have a large building supplies shop – open to both trade and the public.

Come and see what we have to offer!

strenuous, and showing places of interest, campsites, accommodation, refreshments and pubs on route. You need a good pair of walking boots, waterproof coat and trousers, plenty of food and drink for the stretches where no refreshments are available, sun cream, hat, plenty of layers as the weather can change very quickly on the coast, and a mobile phone. A walking pole is another good idea.

I would normally walk 12-15 miles a day and I would go for 2-3 days at a time. I'm lucky that I work at a school so have time in the school holidays. I only went when the weather forecast was good. I don't see any point in walking in the rain and mist. The day I got to Lands End was amazing. Other places that stand out are Perranporth Beach (2 miles walk along the beach), the seals at Godrevy Point, Cape Cornwall, Cadgwith, Gilan Creek, Falmouth (only because the dog got bitten by an adder so a £60 vet bill) Cawsands and Kingsand and of course the finish at the Cremyll Ferry. I finished the whole 258 miles on 25th July 2012.

By that time I had really got the walking bug so set off for Minehead to complete the whole of the South West Coast Path -630 miles in total. I have got as far as Salcombe in South Devon with 180 miles to go, to the finish in Poole Dorset. I may finish this summer but am in no hurry. My only regret is that I should have walked for charity but never thought I would get this far. If you live in Cornwall this really is a thing to put on your 'To Do' list. Amazing from start to finish.

Ness Elcock

Threat to the Coastal Path.

Like Ness in the article above, I am a keen walker and have often enjoyed walking along the Coastal Path. I was therefore very concerned by recent comments from the Environment Minister Richard Benyon at the Royal Cornwall Show, which indicated that he believes the Coastal Path is an expensive legacy and is considering scrapping it.



The Ramblers Association has started a campaign to defend the path and has figures demonstrating the amount of income the various paths around the UK bring to local areas. We may not live that close to the coast in Cornish terms but it still has an effect on our county economy. For more information go to—<http://www.ramblers.org.uk/what-we-do/news/2013/june/minister-throws-doubt-on-coast-path.aspx#sthash.yzTZWMdu.dpuf>

Peter Northmore

SOUTH PETHERWIN POST OFFICE



& THE LITTLE BUTTON SHOP



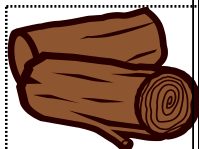
- Greetings Cards
- Stationery
- Local Art
- Gifts
- Home Accessories
- Fabrics & Felt
- Haberdashery
- Jewellery Making
- Buttons & Beads
- Ribbons & Trims

Craft workshops and parties coming soon.
www.thelittlebuttonshop.co.uk

South Petherwin
Launceston, PL15 7JZ
Tel: 01566 774428

Opening Hours:
Mon – Fri: 9.00 – 5.30
Sat: 9.00 – 12.30

LOGS4YOU



**Seasoned hardwood logs
delivered free to your door.**

**Satisfaction guaranteed with the
quality and quantity of wood. Various
sizes of load available**

**(Also nets @ £3.50 – free delivery on 5
or more nets)**

Friendly and reliable service

Call 07821 879106

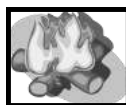
01566 782796

for more details

HIRST CONSTRUCTION LTD & HIRST HYDRO CLEANSING LTD Week St Mary, Holsworthy

SEPTIC TANK CLEARANCE/
installation of all septic/ treatment
plants

Aggregate Supply-Agricultural
Services-Ground works & Civil
Engineering-Haulage-Plant Hire-
Property Maintenance-Skip Hire

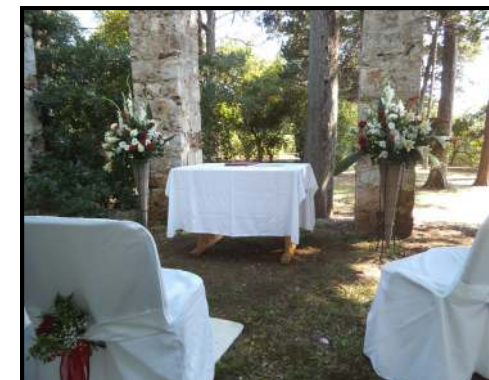


**SEASONED WOOD LOGS
delivered free to South
Petherwin Area**

www.hirstconstruction.co.uk
01288 341095/07836533535

And a wedding with a difference.....

‘Mum, Emma & I are getting married in Croatia. Will you and Dad be able to come?’ What a question! Of course we would be there, and so began the planning for what was a wonderfully romantic wedding and a hot sunny holiday in Dubrovnik. We booked ourselves into what turned out to be a very modern and comfortable apartment overlooking the Adriatic, the Old City of Dubrovnik and the island of Lokrum, where the ceremony was to take place. Those of our friends who had already visited the City told us how beautiful it is and we were not disappointed.



The wedding day dawned and there was time to visit the daily farmers’ market in the square for fresh fruit and lunch before donning our finery – casual dress code thank goodness, the men would have melted in suits and ties! Forty guests waited on the Old Quay for the ferry that would take us to Lokrum.

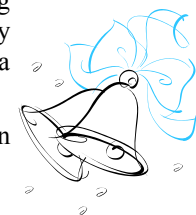


No vehicles are allowed inside the City, so the bride and groom walked through the City Gate and down to the quay, giving lots of holiday makers an unexpected photo opportunity. A ten minute ferry ride brought us to the nature reserve island. We all walked up to an olive grove where chairs and flowers awaited us, and a guitarist played quietly in the background.

The ceremony was simple and the vows a little different from the standard English ones. After lots of photos and laughter, we all walked across to another grove where canapés and bubbly were served. Then it was back to our boat and a cruise around the rest of the island before adjourning to a local restaurant for the wedding breakfast. What a wonderful day and a very relaxed and happy bridal couple – there is a lot to be said for a wedding planner in a distant land, doing all the organizing!

Now we have a new daughter-in-law, hundreds of photos, even more happy memoriesand even Easy Jet gave us no problems!!

Sue Vernon



A holiday with a difference....

What image is called up in your mind when you hear the words "Red Square, Moscow"? If you are of a certain age and grew up in the era of the Cold War and Soviet Communism, you will probably think of tanks and guns and military parades before a phalanx of grim-faced, grey, elderly men. Well . . . things have changed in Russia. When we visited Red Square in May, it was packed with people playing football, basketball, ping pong, pop music blaring out from the live acts on stage, trade stands selling washing machines, children rushing around with flags and ice creams. What a shock!

In fact after a two-week trip to Russia we have had to adjust a lot of our ideas about the country. It's true that we were visiting the more affluent areas and places frequented by tourists, but everywhere we were greeted by friendly, smiling, helpful people, who seemed to be very prosperous and enjoying life (whatever the political background). And everywhere we went we were greeted by music: the band outside the



Catherine Palace playing Swan Lake, a duo of middle-aged blonde ladies in pink traditional dresses singing folk-songs on the bridge at Uglich, and *acappella* choirs singing orthodox church music in every pavilion and cathedral.

We started with a few days in St Petersburg, a beautiful city with a rich history and culture from the Mariinsky Ballet to Faberge eggs. Then a week cruising through lakes, rivers and canals, through forests of birch trees and pines, with glimpses of onion-domed churches and dachas on the banks. We stopped off for visits to an open-air museum of amazing wooden buildings, a small town full of churches and historic buildings (and the first Russian tractor carefully preserved). Finally we had a few days in Moscow, where our visit included not only Red Square and the Kremlin, but a tour of Moscow by night, including the extraordinary underground system with its chandeliers, mosaics, paintings and sculpture. There was far too much for us to take in, in just two weeks, but we felt we had been immersed in Russian culture and came home with so much to think about and having had a wonderful time.

Kaye Montgomery



Jonathan Blake Money Management

Jonathan Blake lives in South Petherwin and offers access to uncomplicated independent financial advice

Jonathan Blake Money Management Limited
Unit 1, Holwood Business Centre, Blunts,
SALTASH, Cornwall PL12 5DW

Tel: 01752 851748 Fax: 01752 851749 Mobile: 07970 011651

E-mail: info@jbmmml.co.uk www.jonathanblakemoney.co.uk

Jonathan Blake Money Management Limited is authorised and regulated by the Financial Services Authority

GEORGE BATEMAN

**Property Maintenance
Small Building Work, Interior & Exterior
Decorating, etc. No Job too Small**

Tel: 01566 773752

Mobile Foot Care

Sally Isaac S.A.C. Dip. FHPT/FHPP

**Gentle and professional
foot care in the comfort
of your own home**

*If you suffer discomfort from
corns, callus, ingrown toenails,
cracked heels, thickened nails
etc. or just have difficulty cut-
ting your toenails give me a ring*



Telephone Sally on 07961 076 168

A Cup of tea with.....Maurice Pitt

Helena Northmore chats to Maurice Pitt who has lived in the village since May 2012. He is 81 years old and disabled with emphysema.

HN. What brought you to South Petherwin?

MP. My heart..... no not a heart condition (laughs) but a certain lady who has been my friend for many years. I used to live in Tremayne and did voluntary work as a hospital driver. Shirley was my most congenial passenger! My wife and I were separated then and my marriage had been on the rocks for a long time. My friendship with Shirley grew and I wanted to live nearer to her. I had many friends in South Petherwin and often came to social events here.



HN. So a bit of a ladies man ?

MP. Yes.....a bit naughty sometimes!

HN. Tell me about your health

MP. I always had a weak chest as a child and had my adenoids taken out. Not in hospital you understand, but in the front bedroom of our house. During the war there was lots of dust from bombed buildings which made it all worse. People told me my chest would improve when I could start smoking. So I started early, and it wasn't easy, but I persevered. Can you believe it? Then just as I got the hang of it, the doctor told me to stop but by then I was hooked and it wasn't easy to give up. I had lots of bronchitis and then developed this emphysema.

HN. How does emphysema affect you?

MP. It's a condition of the lungs so it's hard to breathe. I have this tube that gives me oxygen. I have to wear it all the time, day and night, and it's attached to this oxygen tank. At first I used to fall over the tubing a lot. I can only walk short distances. I have a motorised scooter so I can go out but it's a palaver changing tubes and I get exhausted. It makes everything more difficult.

HN. Do you have much help?

MP. A carer comes in twice a day to help me wash and dress and get my meals ready. But I try to do as much as I can for myself. I do a weekly shop online from Morrisons supermarket. The computer is a big help. And on a good day like today, I can sort out my own medicine.

HN. What are the main frustrations?

MP. Little things. Like I'm sitting here looking at the two new apple trees in my front garden. They need tying up and staking but I know I can't do it.



NEVILL HOVEY & CO LTD
CHARTERED ACCOUNTANTS

Tim Smith FCA CTA

Southgate Close, Launceston, Cornwall PL15 9DU

Telephone: (01566) 772109 Fax: (01566) 772072

Email: tim@nevillhovey.co.uk

www.nevillhovey.co.uk

Adrian Davey Painting & Decorating

Exterior & Interior Painting, Wallpapering

Home 01566 780477 Mobile 07729500390

Foxies

PROFESSIONAL DOG GROOMING

- Friendly service, helpful groomer
- Hydrobath
- Handstripping/Scissoring/Clipping
- Organic Shampoos
- Parking point outside
- Collection and Delivery
- Free to Launceston and surrounding area
- All breeds of dog welcome



FOXIES DOG GROOMERS



South Petherwin, Launceston—Tel: 01566 777655



H. R. JASPER AND SON LTD
WHOLESALE BUTCHERS

BOTATHAN ABATTOIR
SOUTH PETHERWIN
LAUNCESTON
CORNWALL PL15 7JL

Tel: 01566 772843 (3 lines) Fax: 01566 776648



GAS - OIL - LPG
BOILER INSTALLATION /SERVICE
& REPAIR - OIL TANK INSTALLATION
GENERAL PLUMBING
BATHROOMS - WET ROOMS



ALSO **TEL: 01566 880 123**
COME VISIT OUR
BATHROOM SHOWROOM
AT KENNARDS HOUSE (OPPOSITE TRETHERNE LEISURE FARM)

HN What was your job before you retired?

MP. When I left school I did building work for a few years then went into a factory making diesel injectors in Sudbury in Suffolk. I was a shop steward. After that we moved down to Cornwall and ran a small holding and a shop in Delabole. But we got caught up in a mortgage fiddle and lost the lot. We were the innocent party but no one cared about that. So we moved to Tremayne and started building up another smallholding. It was hard but we did alright.

HN. When were you happiest?

MP. That's a difficult question. I think when my four children were little. There was so much happiness and my children brought me such joy. They are all grown up now but three of them still live in the Bude area. My youngest daughter is a 'floating reverend' somewhere in the Midlands. She does mission work to people living and working on the canals. They are all good children and come and see me when they can.

HN. Is faith important to you?

MP. I think it probably is. Don't get me wrong, I was a naughty little lad. No angel. But when I got ill I tried to see a vicar in hospital but it didn't happen. Now Rev Anne Brown comes to see me at home and brings communion and it feels better. It feels right.

HN. Thanks Maurice. It's been a real pleasure talking to you.

Methodist Chapel News

We held a very well attended Cream Tea afternoon event on Saturday 29th June when our Minister Rev Eleanor Reddington gave a very interesting PowerPoint presentation on the channel swim she did as part of a relay team for the charity Aspire in 2009. She also spoke about the very important work the Charity does to help people who have suffered with spinal injuries.



Rev Reddington then went on to speak about her next challenge for Aspire which involves a 3 mile swim across The Solent on 17th August (weather permitting) and is training hard for this event. The people attending were invited to sponsor her for this if they so wished. To date she has raised over £800 towards her target of £1000. We all wished her a very successful swim.

Mary Stoneman

Parish Diary - Regular Events

Organisation	Details	Contact
Parish Council Meeting	Second Wednesday in the month, 7.30 pm, Village Hall	Clerk: Fran Dennison 782277
St Paternus C of E	Service 11.15 am	Wardens: Valerie Adams; Debbie Adams 774244
Methodist Chapel	Morning Service 11 am	Steward: Tony Smith 782204
Prayer Group	Every other Wednesday	Muriel Parsons 773027
Lunch Club	Last Monday in month (unless Bank Holiday)	Tony & Wendy Smith 782204
Knitting	Most Thursdays 2 pm, West Petherwin Farm	Muriel Parsons 773027
Bimbos	Every Monday (except when Lunch Club or Bank Holiday)	Vi Brook 779243
Pre-School	Mon-Fri 9-12am, lunch club 12-1pm; afternoons Mon, Tues, Thurs 1-3pm; toddlers Fri 1.30-3pm (term time only)	Rachel Fasham 779476
Bell Ringers	Mondays, 7.30 pm practice	John Atkinson 774264
Skittles	Tuesdays 7 pm, Village Hall	Vi Brook 779243
Bingo	Last Wednesday of each month, 2pm Village Hall	Derek Pitman 779612
Mobile Library	Tuesdays 12.25-12.40 pm Village Pump	Tues 29/1/13 and every alternate Tuesday

The Little Red Bus (Launceston Community Transport Partnership) covers South Petherwin area on Thursdays. For information, ring 01566 777960

Village Hall: To hire hall, contact Sue Vernon 772640

Methodist Hall To hire hall, contact Wendy Smith 782204

Oil Syndicate Contact Sue Vernon 772640

YOUR PARISH COUNCIL

The Parish Council meets on the second Wednesday each month at 7.30 pm in the Village Hall. It is open for anyone to come and listen in.

Your Parish Councillors are:

Chairman: John Whiting

Clerk: Fran Dennison 01566 782277

Councillors: Lavinia Archer, Caroline Davies, Terry Goodman, Phil Parsons, Andy Patterson, Michael Screech, Andrew Hoskin, Dawn Rogers

Cornwall Councillor: Neil Burden 01566 782286 nburden@cornwall.gov.uk



Children's Page

There are 10 differences in these photo's. Can you spot them?

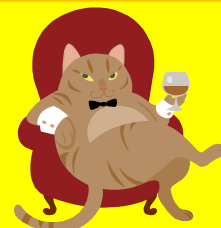


Solution 1. Shovel handle removed 2. Line on right shirt removed 3. Seam on boy's hat removed 4. Girl's chin missing 5. Girl's shovel changed 6. Portion of girl's hair ribbon removed 7. Bucket of water coloured in 8. Umbrella top coloured in 9. Boy's button moved 10. Window in castle moved

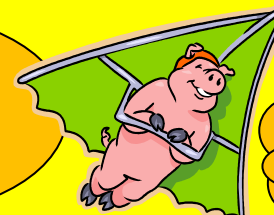
A man walks into a pet shop. 'Do you have any dogs going cheap?' 'No sir' said the shop keeper 'All ours go woof woof!'

CAT FOUND!!

Readers might remember the article some months ago about a cat which had been missing for two years. The article was spotted in the magazine and the cat which had been living very rough has now been returned to its rightful home. THE OTHER SIDE OF THE A30!



What do you call a singing laptop?
Adele!!



What did the pig say at the beach on a hot summer's day?
I'm bacon!!



Michael Johnson Plumbing

Bathrooms and Kitchens fitted

All work guaranteed for two years

The Stable, Bray Shop
Callington PL178QN

Mobile: **07989386921**

Email: mjbuilding@btinternet.com

LOVATON BOARDING CATTERY

Feline Advisory Bureaux Listed Cattery

Daws House, Launceston, PL15 7JF

Home from home holiday for your cats, run by a qualified
Veterinary Nurse; pick up and delivery service available.

Modern purpose built PVC cattery, deluxe heated penthouse chalets

*Please ring Andrea for more information on 01566 778501 or email
andrea@lovatoncattery.co.uk or visit www.lovatoncattery.co.uk*



CHRIS LYLE PLASTERING

& PROPERTY MAINTENANCE

TELEPHONE: **07861783082**

www.chrislyleplastering.co.uk chrislyleplastering@yahoo.co.uk

As your local, time served plasterer I offer a full range of plastering services that
include: Traditional plastering-Plasterboarding-Lime plastering-Tyrolean
application-External render-Internal and external painting-Damp proof plastering-
Dry lining

**25 YEARS EXPERIENCE—FREE QUOTATION—RECOMMENDATIONS
AVAILABLE—MEMBER OF GUILD OF BUILDERS & CONTRACTORS**

Parish Diary - Special Events

<i>date</i>	<i>Details</i>	<i>Contact</i>
Sat 27th July	Summer Fayre. St Paternus Church . 2-4pm	Val Adams 774244
Sun 4th August	6pm. Sung Evensong. St Paternus Church	Rev Brown 770649
Fri 9th August	3pm-Cream Tea and 6.30pm -BBQ. Both at Wesley House in aid of St Paternus Church Funds	John Atkinson 774264 Rev Brown 770649
Sat 10th August	10.30am Coffee Morning Methodist Hall	Tony Smith 782204
Mon 2nd Sept	Lunch Club. Methodist Hall	Wendy Smith 782204
Fri 6th Sept	School Term starts	School 776363
Mon 30th Sept	Lunch Club. Methodist Hall	Wendy Smith 782204
Sun 6th Oct	11am and 6.30pm Harvest Festival Services Methodist Chapel	Tony Smith 782204
Tues 8th Oct	6.45pm Service followed by Harvest Supper Methodist Chapel	Mary Stoneman 773375

Recycling Collection dates; Both rubbish and recycling are collected on a
WEDNESDAY. Rubbish is collected every week; recycling and garden waste (for
subscribers) on alternate weeks. Next Recycling dates will be Wed 24th July, 7th and
21st August, 4th September
Helpline number-; 0300 1234 141

SOME USEFUL TELEPHONE NUMBERS

Emergencies: Police Ambulance Fire Brigade Coastguard 999

Environment Agency—Floodline	08459 881188
Environment Agency—Emergency Hotline	0800 807060
Transco (Gas Emergency Service)	0800 111999
South West Water	0800 169 1144
Western Power Distribution	0800 365900
Police (Non emergency-general Enquiries)	101
Crimestoppers	0800 555111
Citizens Advice Bureau Launceston (9am-noon)	01208 264691
Community Police Officer Clare Danson	01566 771419
Rev Anne Brown –Vicar (Cof E)	01566 770649
Rev Eleanor Reddington– Methodist Minister	01566 782240

Ifor Williams Trailers

**DISTRIBUTORS COVERING
CORNWALL AND DEVON**

**SALES • HIRE
SERVICE • REPAIRS**

'OVER 100 TRAILERS IN STOCK' www.prjengineering.co.uk

PRJ ENGINEERING LTD
TEL (01566) 782794
TEL (01566) 782794

Do come and see our extensive range of Children's Farming Toys
THE TRAILER CENTRE, Nr LAUNCESTON PL15 7QH
(4 MILES FROM LAUNCESTON ON THE B3254 TOWARDS LISKEARD)

JAMES WILLIAMS CARPENTRY

**Bespoke Storage Solutions
Window & Door Replacement & Repairs
Kitchens & Bathroom Fitting
Hanging Doors
Plastering
Flooring Tiling**

We take pride in our excellent reputation to please our customers through hard work, precise workmanship and good house-keeping.

Please check out our website

www.jameswilliamscarpentry.co.uk

T: 01566 248514 M: 074113 77720

A letter from the Methodist Minister at South Petherwin

Dear Friends,

First of all many thanks to everyone who supported the Cream Tea on June 29th. It raised £193. A further £100 has been donated, and so far I've raised £927 for Aspire. Last week I was training in Bude Seapool, and a couple who were watching said "Are you training for a Triathlon?" You should have seen their faces when I replied "No, to swim across the Solent."! We've got a training weekend in Dover in July when I'll meet of the other swimmers. There are 12 of us swimming, and we'll be in groups of four according to swim speed. Each group will have their own RIB (Rigid Inflatable Boat), and there'll also be a motorboat with us. We hope to set off from Fort Gickicker at 12 noon on August 17th.

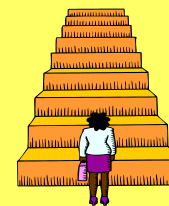
Various people have used words like idiot, crazy and daft to describe what I'm doing but then, the same words have been used to describe challenges people have set themselves over the years, and they've also been used to describe experiments that have led to all sorts of scientific breakthroughs. For instance the first attempts to build a plane were ridiculed, and yet flight has become a normal mode of travel for many people.

Many of the things we now take for granted were once someone's dream or challenge. We all need something which will push us, or make us push ourselves, that little bit further and that little bit harder. After all, it's part of learning, growing and developing. What we do may not change the world, or lead to a great new discovery, but it will build confidence and bring us satisfaction, and in my case, raise money to help improve the lives of people with spinal injuries.

I grew up being regarded as daft by my friends at school, because I went to Church. They didn't understand it when I responded to God's call to become a minister. I don't mind being regarded as foolish for following where God leads, and as following Him is still the main direction in my life, everything else is easy!

Love,
Eleanor

Rev Eleanor Reddington
The Manse, Coads Green Launceston PL15 7LU
Tel- 01566 782240 email- e875@btinternet.com



Sadly we say Goodbye to

Monty Wadland — Monty was known as a happy-go-lucky & popular chap when he lived in South Petherwin at Glen Coe, which is now Magnolia Cottage. He enjoyed singing and apart from his builders' labourer job, he also enjoyed serving behind the bar at the pub in North Hill. He always had a cheery manner and a kind word for everyone and many in Launceston will miss seeing him about the town.