

Parish Magazine Committee

Editor: Alison Barham 772596
alisonbarham21@gmail.com

Advertising: Jo Tope 779575
jotopel@yahoo.co.uk

Treasurer: Helen Masters 775545

Secretary: Sue Vernon 772640

Phil Parsons 777179

Cherry Pyke 776998

Phil Fox 773125

Ella Payne 248423

Copy for the next issue of the magazine should be emailed to Alison Barham or given to a member of the editorial committee no later than

31st October please.

For the website please contact Phil Fox on phillip_fox@yahoo.com



VILLAGE CALENDAR

The Parish Magazine Committee intend to produce a parish calendar for 2021 which will also coincide with our 100th issue!! This will feature all your photos taken throughout the year: village life and events, people, wildlife, pets, landscapes.

The plan is to have the calendar, which will be sold in aid of charity, ready to buy in November 2020. Happy snapping!

Remembrance Day Sunday 10th November



A short service and wreath laying will be held at the War Memorial at 10.45 followed by a service at St Paternus Church.



Dupath Well
Simon Harry

Printed by Phil Tucker Email philip.tucker@parishmagazineprinting.co.uk

South Petherwin Parish Magazine



Issue no 93

September 2019



CANINE CAPERS AT DOG SHOW!



See INSIDE For details

Parish Council Update By Rebecca Frame, Parish Clerk



Hopefully you have seen that progress has been made at Daw's House to address the speeding problem. The 'gateway' feature and road markings, as you enter Daw's House from Launceston, are now in place and also the introduction of additional road markings at Petherwin Water. The Parish Council would be very interested to hear if the traffic speeding features have made any impact on speeding traffic.



Stage 2 of the Community Governance Review (boundary changes) has commenced. Stage 2 involves Cornwall Council agreeing draft recommendations for public consultation by December 2019. The Electoral Review Panel will be holding ten public engagement meetings across Cornwall. The relevant meeting for this area is: **Friday 27 September in Tregadillett Community Centre from 7pm.** Parishes being focused on are Launceston, South Petherwin, St Stephens by Launceston Rural, St Thomas the Apostle Rural (Launceston Community Network Area); Davidstow and Treneglos (Camelford Community Network Area).

Parish councils' have also been invited to comment on submissions received from third parties that affect their parish. All submissions can be seen at: <https://www.cornwall.gov.uk/council-and-democracy/elections/community-governance-reviews/information-about-stage-2-of-the-community-governance-review>.

ADVERTISER INDEX

South Petherwin Parish Magazine includes advertisers' details in good faith, but please note that we cannot be held responsible for any goods or services which these businesses provide. Please support our advertisers, they support the magazine.

If you wish to advertise with us, please contact the Advertising Officer, Jo Tope

Phone: 779575 Email: jotope1@yahoo.co.uk

Advertiser	Page	Advertiser	Page
Adrian Davey painting & decorating	21	Jonathan Blake Money Management	23
Andrew Hosking, furniture & joinery	12	Lovaton Cattery, Andrea	21
Bees Trees & Garden Maintenance	29	Melanie Young, chimney sweep	9
Calweton Vets	29	Mobile Foot Care, Sally Isaac	11
Caroline Harris Bookkeeping	13	Nic Parker hairdressing	12
Castle Vets	13	North Cornwall Pest Solutions	20
David Elcock, plumbing & heating	20	Parnalls, solicitors	30
Dowson's Plumbing	28	PRJ Engineering, trailer centre	9
ESG Boilercare	22	R Mears & Sons, chimney sweep	11
Flat Out ironing service, J Radford	21	Radford Plumbing	12
George Bateman, building	8	Round & Round the Garden	29
Group Travel	22	Ruby's Garage	23
Hardwood logs for sale	20	Slimming World	30
Hine Landscaping & Gardening	11	South Petherwin Pre School	8
Jack Rich, Lawnmower repair	8	Stress-less anxiety solutions	14
Jaspers, wholesale butchers	30	The Frog & Bucket pub	10



Neighbourhood Watch in the Parish

Beware of scam calls received in the form of a recorded message and purporting to be from BT Technical Division stating that you will be cut off in the next 30 minutes with the option to press 1 for further instructions. Anyone who has caller display may see the number preceded by the local area code 01566. Please do not act on these calls, just hang up.

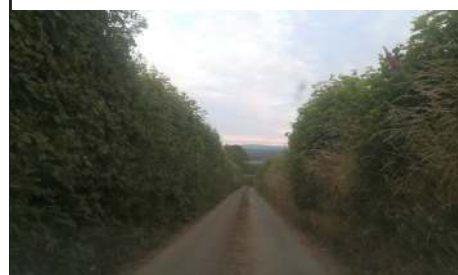
Co-ordinators:

Tregaller Lane and Tremeale: Mary Stoneman (773375) and Crispin Earle (774038)
The Village: Helen Masters (775545)
Tiny Meadows: Richard Beacham (773614)
Daws House: Andrea Foster (779181)
School watch: Gillian Sleep (773300)

If you are interested in joining the scheme please contact any of the above.

Answers to village trail picture quiz in July's issue (page 3).

1. John William Saunders
2. Tractor (1 Church Walk)
3. West Petherwin Farm entrance
4. The Rectory
5. Number 10 Trelinnoe Gardens



**This month's picture quiz:
where is this?**

NOTICEBOARD



*Amy Trehane married Dan Jasper
on July 6th at South Petherwin
Methodist Chapel.
They both live in the village.
Congratulations to Amy & Dan and
best wishes for a long and
happy marriage!*

Simple Blackberry Gin/Vodka

I have made this for the past few years and it makes a perfect Christmas present if you can keep it that long!

Ingredients:

250 g ripe blackberries
70 cl gin or vodka (own brand is perfect, no flavoured gin though)
110 g white sugar

Instructions:

Place the blackberries in a sterilised jar and cover with the sugar. Add the gin and give the jar a good shake. Place the jar in a dark place, like a kitchen cupboard. Give the jar a shake every so often over the next few days until the sugar has dissolved. Leave to mature. It's drinkable in 4 weeks but it can be left for 3 months. Strain the gin through a muslin cloth, trying not to break up the blackberries. Pour the liquid into a bottle. If you think it needs it, add a little more sugar and shake until it's dissolved.

Tip: Though you won't need the actual blackberries after this stage you don't have to discard them. Pop them into a glass of Prosecco for a blackberry gin cocktail. After 4 weeks, the gin is beautiful dark red in colour. It still holds a boozy strength but with a fruity tone of the blackberries. For the perfect, refreshing summer cocktail, serve a double measure chilled over ice and topped up with tonic. If you leave the gin for 3 months, it mellows and the full fruitiness of the blackberries comes through and it's smooth enough to serve over ice as a liqueur. An excellent addition is a cinnamon stick which can be added to the gin at the same time as the sugar.



CHARITY BAKE SALE

Josie Hosking held a bake sale on August 9th to raise money for the NSPCC. Despite the wet weather she managed to raise £104! Thank you to everyone who came along.



Parish Council Update By Rebecca Frame, Parish Clerk

Finally the Parish Council continue to engage with the agent regarding planning application PA19/06624, agri-business centre and employment trunk road service area at Kennards House, to determine a date for a parish consultation; no date has yet been set but **the 19th or 20th September have been suggested by the agent.** The representative at Avison Young is Peter Stockall and he can be contacted at peter.stockall@avisonyoung.com.

Rebecca

To contact the Parish Council:

South Petherwin Parish Council Clerk: parishcouncil@southpetherwinpc.org

Parish Council Chairman: Phil Parsons; philparsouthpetherwinpc@gmail.com

Tel 01566 777179, mobile 07597 383685

Parish Council Vice-chair: Rachel Jeffery - rjefferysouthpetherwinpc@gmail.com

Your Parish Councillors:



Season of mists and mellow fruitfulness....

*Warm September brings the fruit;
Sportsmen then begin to shoot.
Fresh October brings the pheasant;
Then to gather nuts is pleasant.*

From the poem The Garden Year by Sara Coleridge

I can't believe it's September already! In this issue we have the usual interesting assortment of articles, especially on charity events - either in the pipeline or just completed - raising money for great causes such as prostate cancer, the NSPCC, a Dog Show to raise funds for a once-in-a-lifetime trip, and recycling for KicksCount to name a few. And that's on top of all the other activities that regularly occur in the parish. Happy reading!

Alison Barham, Editor

Former South Petherwin pupil to go to Bunjakko Island Vocational School in Uganda!!



Megan Belsey (pictured left), a former South Petherwin CP pupil and current student at Launceston College, has successfully gained a place to attend a life changing trip to Uganda!

Megan, 15, had to apply to her Principal stating why she would like to attend the trip and giving reasons why she felt she should be chosen. Some of the reasons for wanting to attend the once-in-a-lifetime trip were that she is passionate about helping others and that she felt she would gain valuable life lessons and experiences from the trip, whilst being able to make some precious memories. When Megan received the news that she had been selected for the trip, she was overjoyed!!

Whilst in Uganda, Megan will have the opportunity to help with renovating the partner school, helping make the children of Bunjakko's learning environment a safe and enjoyable place to be. They will also visit an orphanage and there will be the opportunity to sponsor one of the children they meet. Megan has lived in South Petherwin for most of her life, as have her parents, and she can't wait to go to another village and see the differences and similarities between the two.

To enable the trip to go ahead, the students need to raise funds for their place on the trip. Megan organised the Dog Show in South Petherwin on Sunday 8th September (photos on front cover and right) and raised £524 — a great start to her fund raising!! There are numerous other events in the planning to aid fundraising, so keep your eyes peeled for Prize Bingo, a table-top sale and of course Wine & Wisdom!!!

If you can't attend any of the events, but wish to donate towards Megan's trip, she would be very grateful and you can do so by contacting her Mum (Kate) kate.belsey@hotmail.co.uk or her Dad (Jamie) jamie.belsey@cudadrinks.co.uk.



GARDENING MATTERS

In September the garden shifts noticeably from summer into early autumn. Cool nights and damp mornings, glistening cobwebs and fading light.

Jobs to consider in September

- Harvesting apples, pears, autumn raspberries and blackberries.
- Keep picking vegetables such as beans, courgettes, tomatoes and cucumbers.
- Autumn lawn care such as scarifying, aerating and re-sowing. Apply an autumn feed to promote strong roots and maintain a healthy lawn through winter.
- Plant biennials such as foxgloves, wall flowers and sweet williams into their flowering position.
- Plant spring bulbs such as crocus, daffodils and dwarf iris.
- Put netting over ponds before leaf fall gets underway.
- Trim evergreen hedges and shrubs and they will stay in shape through the winter.
- Take cuttings for hedges and topiary such as yew and box.
- Move evergreen shrubs as the soil is still warm and damp so the roots can establish before the winter frosts arrive.
- There is still time to sow salad crops and vegetables such as kale and spinach for over winter.

Many grasses are looking their best at this time of year and their seed-heads continue to give structure to the garden through the winter.

Below: *Stipa gigantea* and *Miscanthus sinensis*



Ella Payne

Email: samnellap@gmail.com

Fundraising Gig On Behalf of Prostate Cancer UK



On the evening of Friday August 23rd at The Frog and Bucket pub, my band 'The Moody Booze' performed live, trying to raise funds for Prostate Cancer UK. This is a charity we have been raising money for this year through various events, such as gigs and pub quizzes.

For this gig we had a guest artist, namely Abi Caine. It was very, very hot, and the afternoon's rehearsal had been like a sauna, but fortunately we took on enough water to make it to the evening.

The gig started late, due to technical problems caused by feedback, and this still caused the odd issue during the first half of the gig, and also Abi's solo set.

In the first half we performed songs by Eric Clapton, ZZ Top, Neil Young, and two songs with Abi leading on vocals – Harvest Moon by Neil Young, and Raised on Robbery by Joni Mitchell.

The band then went to take their medication and Abi took over with a performance showcasing her own song writing skills, as well as her superb voice.

Before the band resumed for the second half, the raffle took place and various prizes were won, including the main prize of a two day stay for two people at holiday accommodation near Henley on Thames.

Fortunately the technical issues did not re-appear in the second half, and we performed songs by Creedence Clearwater Revival, The Beatles, David Bowie, Free, Eddie and The Hot Rods, finishing the night with Keep on Rockin' in The Free World by Neil Young.

After totting up the money taken during the gig, we raised a total of just over £350 for Prostate Cancer UK, and with the money raised earlier in the year, we are hovering around the £1650 mark, with another gig still to come.

The band (apart from me) came from Hayling Island, The Isle of Wight, Milton Keynes, Leighton Buzzard, and West Drayton in order to perform on the night, which shows the commitment they have to raising funds for this cause. Hopefully we'll be back in the not too distant future.

Phil Fox

SHARE: South Hill Parish Community Energy group

SHARE has joined the recycling program **Terracycle** to reduce the amount of plastics that can't be recycled kerbside.

Terracycle turn the items into new products like park benches, and credit our nominated charity **KicksCount** who aim to reduce the UK still-birth rate by educating pregnant mums about the importance of their baby's movements. SHARE has set up a number of local collection points including a bin decorated by the children at the school Summer Fayre and now placed outside the Methodist Church for all to use.

Items that can be recycled are limited to what the manufacturers dictate, it's the products not the plastic itself that donates if it is accepted by Terracycle.

They include:

- all biscuit, cracker and cake wrappers, including multipacks
- all crisp and snacks packets incl. popcorn, pretzels, peanuts and Pringles
- all sweets and confectionary wrappers
- baby food pouches and lids
- bread loaf bags
- triggers and pumps off bottles
- disposable gloves
- air fresheners and packaging
- dishwasher tablet and salt flexible packaging
- tops of washing up liquid bottles
- used toothbrushes, electric heads and plastic packaging and toothpaste tubes
- pet food pouches, clean dry and bagged + plastic bags from biscuit & treats ALL PETS
- contact lenses—the foil and plastic packaging

We cannot take anything not on this list.

For updates and more information visit our web page:

<http://south-hill.co.uk/charity-recycling>

Join the Facebook group:

<https://www.facebook.com/groups/832979876753455/>

Or email SHARE@south-hill.co.uk

SHARE South Hill
Association for
Renewable Energy



Defibrillator Fridge Magnets

By Phil Fox

In the work carried out leading up to the deployment of the village defibrillator, it was certainly implied that anyone calling 999 in and around the village to report a possible cardiac arrest would be informed of the location of the defibrillator, and given the code to unlock the cabinet to gain access.

Since it went live, the South West Ambulance Trust (who run the 999 service in Cornwall) have stated that no details of the defibrillator cabinet code will be given to any caller unless they are within 200 metres of the cabinet. This obviously rules out most of the population of the village and the surrounding area!

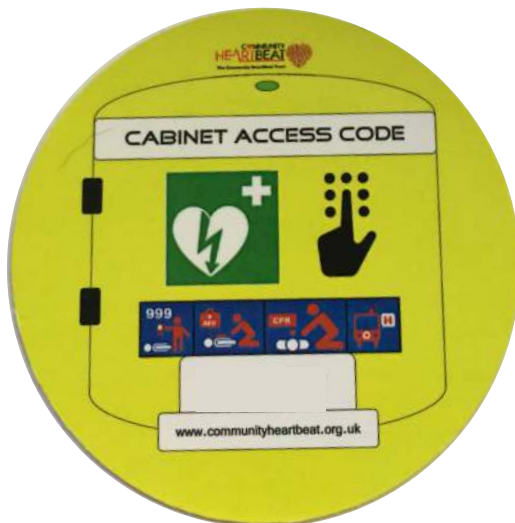
Since learning of this, the South Petherwin Defibrillator Group (SPED) have been trying to find a workable solution to enable access to the cabinet for most of the village and the immediate surrounding area. Various options have been explored, but the only viable one has been to distribute fridge magnets that contain the code to unlock the cabinet.

To that end, 310 magnets will be distributed, along with the Parish Magazine, to homes in the village and the immediate surrounding area. If these are kept somewhere prominent it means that the defibrillator cabinet can be accessed in times of emergency, even if the incident is outside the South West Ambulance Service's 200 metre boundary.

As there are more than 310 homes in the Parish Magazine distribution area, not every copy of the magazine will come with a fridge magnet. In the event that you haven't been supplied with one, but feel you would like one, please contact me to register an interest. There is a cost implication in supplying the magnets, and if there is sufficient interest in additional ones, we may be able to order an additional batch and give them to those specifically requesting one.

Since the SPED group made a decision to supply the fridge magnets, but before they could be deployed, there have been two incidents in the village where a defibrillator was required. In the first, the emergency services did not give out the cabinet code, but luckily another defibrillator was found, and in the second, the code was given, and the defibrillator was retrieved but not deployed. Hopefully, the deployment of the magnets will ensure the defibrillator is available when needed.

Contact Phil on:
phillip_fox@yahoo.com



News From Cake and Rakers

Over the summer we have been able to establish paths through the meadow areas, which have opened up access to the churchyard for visitors, as well as adding to the mosaic of habitats for wildlife. We were unable to do this previously due to a lack of equipment, but we now happily have access to a working petrol mower as well as a good old fashioned push-along – harder

work but more in keeping with our ethos!

We have also been maintaining the areas around graves that we know are regularly visited. Cormac have also agreed to include the area with the recent memorials opposite the church porch in their monthly maintenance regime. If you need regular access to a memorial that is not currently accessible please let us know and we can



include it in our cutting plan.

At the time of writing the next cut is imminent and will include the whole of the churchyard, so raking it will be quite an undertaking – please get in touch if you'd like to be added to our list of volunteers or just to be kept informed of events spcakeandrakers@gmail.com.

One of our main aims when we started this project was to attract grasshoppers back to the silent churchyard. A few months ago the first few chirrups were heard, and recently we enjoyed a full chorus! Here's one of the singers.



Photo: Simon Harry

Karen Harry



Santa sent us some holiday snaps. Guess where from! He really enjoyed exploring with the spotters guides from the old 'phone box and is now relaxed and ready for final preparations for Christmas. He starts, of course, with cards, so that they can be chosen at leisure and sent in good time, so he'll be at Central Methodist Church as usual from 1st November (10 to 4) and until 7th December.

HELPING LOCAL PEOPLE IN THEIR
PERSONAL LIVES & BUSINESSES



Parnalls
SOLICITORS ESTABLISHED 1790

All About You



NetRights
Social Media, Internet & Media Law

Real Support in
a Virtual World

☎ 01566 772375 ✉ ENQUIRIES@PARNALLS.COM



**South Petherwin
Methodist Church
Tuesdays at 7.30**

Call Jane on 07769 734316

**Email: jane.roberts996@gmail.com
#slim_with_jane**

**Football Club Wednesday
9.30am, 5.30pm, 7.30pm**

**Ambulance hall Launceston:
Monday with Dawn (07764484188)
9.30am 7.30pm
Thursday with Kate (07974041548)
10am, 12, 5pm and 7pm**

The South Petherwin Community Benefit Trust

The fund was started in 2012 and money comes from income earned by two wind turbines within the parish boundaries. These are Bottenett and Trevozah, combined income approximately £3,500 a year. These are the only turbines that donate through the Community Benefit Fund Trustees. Other turbines within the parish administer funds in their own way.

Applicants do not need to live within the parish but the application must be able to demonstrate that the money will benefit the parish at large or individuals living within the parish. To date, taking into account already allocated funds, there is £7,115 in the bank and people are encouraged to apply. The application process is as easy as we could make it. We also respect applicants' confidentiality.

To date we have provided funds toward the allotments, South Petherwin Cricket Club and Tregadillet Songbirds. Benches were also funded for the school and parish play area. The parish Fun Day in June was given a considerable sum towards the event; the village hall had funding towards a new kitchen and more secure windows and doors; as well as an initial payment for the defibrillator. Funds have also been given to individual applicants for education purposes and memorials. Following an application we offered to make funding available for the parish website as well as supporting the parish magazine. In excess of £5000 has been shared amongst the above and several other applicants to date.

As with all grant making organisations we have conditions which are set by the contributors to the funds. Accounts are audited initially by independent auditors and again by Cornwall Council which holds the money until satisfied our procedures are appropriate. The conditions set by Bottonett and Trevozah include we cannot give money to any religious or political bodies and that money can't be used for entertainment (winning and dining) or hospitality. Neither do we directly supplement individual incomes.

We have refused very few applications and usually give the amount asked for, although in some instances we have given less than requested. We publish accounts annually in the parish magazine and also at the parish meeting held in April.

Our meetings are usually held in a trustee's home and as such we do not encourage public attendance. This saves the fund money and in any event when funding was being allocated the public would be asked to leave. All trustees are volunteers and, with the exception of the secretary who receives £50 a year for ink, paper and postage, nobody receives any money from the fund.

At present there are seven trustees, including two parish council representatives. We welcome all applications, in particular from different sources and individuals. All applications are given respectful consideration even if refused. This is your fund and your money. Do not be afraid to apply.

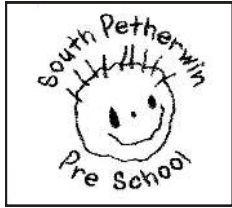
Peter Northmore



H. R. JASPER AND SON LTD
WHOLESALE BUTCHERS

**BOTATHAN ABATTOIR
SOUTH PETHERWIN
LAUNCESTON
CORNWALL PL15 7JL**

Tel: 01566 772843 (3 lines) Fax: 01566 776648



The first step for bright young things.

Our experienced staff develop *“warm and caring relationships with the children that foster a general sense of trust and well-being”* and *“help to promote the development of early communication skills and a positive attitude to learning.”* Ofsted

Monday, Tuesday, Wednesday & Thursday : 9am – 3pm
Friday : 9am – 1pm Lunch Club: 12 – 1pm
£10.50 half day / £21 full day

We now have places for funded two year olds.
For more information call Rachel on 01566 779476



Jack Rich Mower Service and Repair

Service and repairs to most makes and models of garden machinery. Work tailored to suit requirements and budget. Collection and delivery available. Call Jack - 07580757880

GEORGE BATEMAN

Property Maintenance, Small Building Work,

Interior & Exterior Decorating, etc.

No Job too Small

Tel: 01566 773752



Our experienced dedicated equine Vets now provide a weekly half price visit on Mondays in the Launceston area. We offer a comprehensive, affordable service for all horses, big or small, from stud work to routine vaccinations.

Our fully mobile digital X-ray units, scanners and dental tools allow us to bring modern Veterinary skills to your stable.

Phone 01579 382663

Follow us on Facebook for the latest offers and news.



Fully Insured Lady Gardener
RHS Level 2 Certified

Do you need extra help to keep
your garden just the way
you like it?

Whether it's regular appointments or a particular garden project, I offer:
Planting and care of beds, border & Containers, design and re-design ideas.
Weeding, digging and general tidying,
pruning and cutting down, lawn and hedge cutting

07968 170130



BEES TREES & GARDEN SERVICES

www.beestrees.co.uk

- ALL ASPECTS OF TREE SURGERY UNDERTAKEN
- FULLY QUALIFIED ARBORIST
- FULLY INSURED
- TREE FELLING, PRUNING, RESHAPING & LIFTING
- SURVEYS & HEALTH INSPECTION
- HEDGE CUTTING
- ALL SITES LEFT CLEAN & TIDY

CALL DANIEL FOR A FREE QUOTE

01566 772 268 or 07909 517 833

beestrees1@outlook.com

CaféScientifique is a nationwide network of groups for the informal discussion of scientific issues

Next Launceston meeting:
Tuesday 15 October 2019 at 7.00pm
at Eagle House Hotel

"A sea of Plastics"

by Professor Tamara Galloway, BSc, PhD
Biosciences, University of Exeter

Professor Galloway's research group studies the biological effects of environmental chemicals in human and wildlife populations.

Entry still free but donations are very welcome to cover hire of room & speakers' expenses. All refreshments must be paid for

Venue: Eagle House Hotel, 3 Castle Street,
Launceston PL1 5 8BA

For any queries contact: Cherry Warne on 01566 772701 or email:

cheerywatsonovna@btinternet.com
or through our website:
www.cafescilaunceston.org

**COADS GREEN
METHODIST CHAPEL
FILM AFTERNOONS**

1st Sunday of each month
Free of charge
Please come along and join us



BREAKTHROUGH

Will be shown at
**Coads Green
Chapel on Sunday
6th October at 2:30
pm**

The true story about one
mother's unfaltering love in
the face of impossible
odds.

SAVE THE DATE: Sunday 3rd November
Film tbc



The Trailer Centre,
Nr. Launceston 01566 782794

www.prjengineering.co.uk

4 miles from Launceston on B3254
Email: sales@prjengineering.co.uk
Postcode: PL15 7QH

MAIN DISTRIBUTOR FOR

'BRITAINS LEADING
TRAILER
MANUFACTURER'



COVERING CORNWALL AND DEVON

Opening
Times:
Mon - Fri
8:30 - 1, 1:30 - 5
Saturday
9 - 12

WIDE RANGE OF TRAILERS
AVAILABLE FOR HIRE FROM £40 A DAY

EXTENSIVE RANGE OF SPARES IN STOCK
COVERING MOST MAKES OF TRAILER



**SALES * HIRE
SERVICE * REPAIRS**

FULLY EQUIPPED WORKSHOP
FACILITIES FOR SERVICE AND REPAIRS

LARGE SELECTION OF CHILDRENS
FARMING TOYS INC. BRUDER & ROLLY TOYS

Over 35 Years
Experience



**Boiler Service,
Breakdown & Repair**

**Aga/Rayburn Service,
Breakdown & Repair**

**Landlords
Safety Checks**



Telephone: 01566 880 123

Melanie Young

Local Chimney Sweep and Vac
Master sweep trained
Fully insured

**Tel: 01566 889006
Mobile: 07773 333718**
swws@hotmail.co.uk



THE FROG & BUCKET PUB SOUTH PETHERWIN



**Chris, Debbi,
Phil, George & Tina
extend a warm welcome to you!**

**Open 7 days a week
from midday until 11pm
Tel: 01566 776988**

“Tea & Toast Summer Special”

at South Petherwin Chapel

At the request of the parents and grandparents who attend “Tea & Toast” two extra special days were set up for the summer holidays. The first was on Thursday 8th August and was well attended. Our regular pre-school children brought along their older brothers and sisters, so the place was full with laughter and excitement. The morning was very successful and included face painting and lots of toys to amuse the children as the parents and grandparents were able to catch up whilst enjoying the usual freshly brewed beverages and a slice of toast.

The second Summer Special was held on Thursday 22nd August and was equally successful with all the usual activities plus extra games provided to entertain all the children. We also heard more about the recycling project SHARE. (There is a dustbin placed in the chapel grounds, with explanatory notice, for the collection of these recyclable items.)

“Tea & Toast” will recommence on **Thursday 5th September** from 8:30 to 10:00am where we look forward to welcoming back our parents, grandparents and carers as well as some new members.

We would like to thank everyone who has attended these weekly sessions and helped us to make it a great community event.

God bless

Tony & Margaret Stephens



SOUTH PETHERWIN METHODIST CHURCH



A farewell gift was presented to Tony and Wendy Smith on behalf of South Petherwin Methodist Church on Sunday 23rd June, by Revd Jo Smart and Mrs Mary Stoneman (church member) in appreciation of all the time and effort they had put into serving the church.

Tony and Wendy held various offices within the church spanning over some 20 years,

including serving on the church council. Tony served as church steward from October 1998 to the present time. He was also gift aid secretary, property committee member and oversaw the building of the new porch and facilities which was opened in 2006. Wendy served as church council secretary from February 1999 until October 2006. With her skills in publishing she produced the weekly chapel notices sheets, together with the annual flower and door stewarding rotas. Together, they ran the monthly lunch club and coffee mornings until the final ones in May 2019, due to their imminent departure.

Tony and Wendy have now moved to Bristol to be nearer their family and our prayers and blessings go with them.

Coffee Mornings

These are held on the 2nd Saturday of the month from 10.30 am-noon and are at present supporting the Launceston Food Bank.

You are invited to come along and join us, enjoy a cup of coffee/tea with a piece of homemade cake, catch up with friends and perhaps be tempted to buy something from our bring and buy stall.

Mary Stoneman



Harvest Festival Services:

Sunday 6th October 11am

Guest Preacher, Rev Ken Wakefield

Monday 7th October 6.45pm

Short Service to be led by Mr Keith Browne

Harvest Supper to follow £5.00 Adults £2.50 Children
Bookings please – Mary Stoneman 01566 773375

Mobile Foot Care

Sally Isaac S.A.C. Dip. FHPT/FHPP

Gentle and professional
foot care in the comfort
of your own home

*If you suffer discomfort from
corns, callus, ingrown toenails,
cracked heels, thickened nails
etc. or just have difficulty cutting
your toenails give me a ring*



Telephone Sally on 07961 076 168



LANDSCAPING & GARDENING

HINE

At Hine landscape gardening,
we have available a team of expertise.
We can help you realise the potential
of whatever outdoor project
you have in mind large or small.

Maintenance - Lawns - Trees - Clearance - Stonewalling

07967 387748

www.hinegardening.co.uk
e:hinelandscaping@yahoo.com

Trecrogo Chapel House, South Pethewin, Launceston



R Mears & Sons Chimney Sweeps & Stove Installation

Established over 30 years

Vac Brush. Full CCTV investigations.

Pots, Cowlings & Bird Protection fitted. Chimneys Lined.

Solid Fuel Appliances, Rayburns, Woodburners,

Stoves, etc serviced. Fully Insured.

Tel: 01840 261221 Tavistock: 01822 664554

Mob: 07737 533392

www.sweepdevon.com



Radford Plumbing

Kitchen & Bathroom Fitting

Kitchens, Bathrooms, Wet Rooms
General Plumbing, Tiling Electrical Work,
Flooring Carpentry, Plastering



- Free Quotes
- All work to high standards and guaranteed
- We manage your project from start to finish

Guy Radford

01566 782 070 / 07825 611 580

guy@radfordplumbing.co.uk

www.radfordplumbing.co.uk

Wood View, North Hill, Launceston, PL15 7PQ

Nic Parker

Mobile | Hairdresser



07816 183125

01566 772393

36 Trelinnoe Gardens, South Petherwin,
Launceston, PL15 7TH

• Fully Qualified With Over 20 Years Experience •



Andrew Hosking

Springfield
Tregaller Lane, Daws House
Launceston, Cornwall
PL15 7JH
Tel 01566 772537/
775818

Designer & Maker of
Quality Furniture & Joinery

SOUTH PETHERWIN CRICKET CLUB

As the 2019 season comes to a close at South Petherwin CC, there is plenty to celebrate on the field. Both teams performed well with some of the younger players progressing and performing brilliantly throughout the season. There have been four players from the club also represent Cornwall this year. The first team secured 3rd place in Division 3, for a second consecutive year, which is a fantastic achievement. The second team, after promotion last year, did excellently to finish in 5th place in Division 5. Everyone at the club can feel proud of what we achieved this year.

Unfortunately, regardless of recent success, the clubs future is not safe. Due to recent planning applications, the ground we play on at Kennards House (next to Launceston showground) is due to be relocated. With no other playing surface guaranteed, the 100 year history of the village's cricket club is at risk. Hopefully, the planning proposers Kivells will be able to keep the club at its current location to ensure all of the hard work will not be wasted. We have been at the current location for nearly 30 years and have had many successes there.

The next event the club are proud to host is a County final on the 14th of September. This will be the last match of the season at the club and we would welcome anyone willing to come up and watch. There will be refreshments served all day, as well as a BBQ in the afternoon.

If you're looking to play some cricket next year, willing to sponsor the club, or can provide any guidance on any planning predicament, feel free to contact Jacob Masters - 07891115713 - jacoblrfc@hotmail.co.uk.

Lawrence House Museum welcomes its new curator



We are pleased to announce the appointment of the new interim curator of Lawrence House Museum, Dr Damon Dennis (pictured). Having worked in both the Ashmolean and Pitt Rivers museums in Oxford, Dr Dennis took his first degree in Archaeology at Oxford University and then did his PhD in Anthropology at University College, London. Following the retirement of Jake Jackson as curator earlier this year after an association of over 20 years, there has been something of an interregnum during which volunteers and town councillors alike have worked hard to ensure the museum has continued as usual and is now open on Saturdays. Dr Dennis's present appointment is on an interim basis until 20th December to allow Launceston Town Council time to consider and set a budget for the museum for 2020.

Lawrence House Museum is open on Monday to Saturday from 10.30am – 4.30pm, last entry 4.00pm. **The Museum closes on Friday 25th October.** Entry to the museum is still free so you can come as often as you like.

Contact details: Phone 01566 773277; email: lawrencehousemuseum@yahoo.co.uk.
Website = www.lawrencehousemuseum.org



School News

By Theresa Mills

We are delighted to welcome our new reception children into school. They have settled so well and we look forward to following their progress throughout their time with us.



We also have another new addition, Buddy our school dog. Buddy was introduced to the children in assembly and I don't know who was happier – Buddy or the children. Wagging tails and smiles all round! Buddy is only 12 weeks at the moment but when he is older he is going to train to be a pet therapy dog.



If you would like to join our lovely school team, we have a vacancy for a midday supervisor. This is for one hour a day (12.15 to 1.15) i.e. five hours a week. For further details, please click on the vacancy tab on our website.

Caroline Harris MIAB Bookkeeping Services

www.cmhbookkeeping.co.uk

- Bookkeeping
- Accounts preparation
- VAT
- Self-assessment
- Secretarial services
- Many years office and business experience

Tel: 01566 783502

Mob: 07866 953708

E-mail: cmhbookkeeping@btinternet.com

The Old Chapel, Portgate Hill, Lewdown, Okehampton, EX20 4PX



“ I WOULDN'T TAKE MY PET ANYWHERE ELSE ”



You need a friendly and local vet you can trust and our customers trust us to provide the best possible care for their pets.

Personal, professional and compassionate veterinary care in Launceston.



CASTLE VETERINARY GROUP

Pets – 01566 772211 Farm - 01566 772371
 Pennygillam Way, Launceston PL15 7ED
info@castleveterinarygroup.co.uk
www.castleveterinarygroup.co.uk

CHURCH NEWS

St Paternus Church (C of E)

Forthcoming events & services

9th November	10 - 12	Gift Day	In the church
20th October	11.15 am	Harvest Festival (morning only)	In the church
25th October	7.30pm	Quiz	Village Hall (see below)
10th November	10.45 am	Remembrance Sunday	War memorial then the church
December 1st	4.30pm	Dark to light Advent service	In the church

Don't forget:

Coffee mornings are held on the first Saturday of every month in the church

It's Quiz Time!

When? Friday 25th October at 7.30

Where? Village hall

What? A fun quiz for all the family!

How much? £3.00 per person

Make up a team of up to 6 or just come along and join a team

Tea and coffee provided but bring your own snacks and drinks

For more information ring Robin West on 07768288527

Proceeds towards the upkeep of the church



STRESS-LESS ANXIETY SOLUTIONS

Axe your anxiety, wipe out your worries...

Call Jeff to find out how to axe your anxiety without pills or potions in six weeks or less...

1-2 South Battens, North Hill, PL15 7NJ

Tel: 07492870395

Email: slhypno@outlook.com

Jonathan Blake

Money Management

Jonathan Blake lives in South Petherwin and offers personal service and access to uncomplicated independent financial advice.

Jonathan Blake Money Management Limited
Unit 1, Holwood Business Centre Blunts, SALTASH
Cornwall PL12 5DW

Tel: 01752 851748 Mobile: 07970 011651

E-mail: info@ibmml.co.uk
www.jonathanblakemoney.co.uk

Jonathan Blake Money Management Limited is authorised and regulated by the Financial Conduct Authority.

Ruby's Garage



Car, 4x4 & Light Commercial

Sales, Service & Spares

Your local family owned independent garage for over 45 years
Specialising in advanced vehicle technology

- Servicing and MOT facilities
- Workshop equipped with latest all makes Diagnostic Equipment
- Competitive prices on Tyres, Batteries and Clutches
- Specialist in 4x4's with wide range of spares currently in stock
- Suppliers of new and used Cars, 4x4's and Light Commercials
- Full bodyshop facilities including insurance work carried out
- Air Conditioning checks and servicing carried out

For more information or advice, contact us by the following:

TEL: 01566 782402/782536 FAX: 01566 782741

e-mail: brubys@aol.com or visit us at www.rubysgarage.co.uk

Group Travel

Enterprise Park, Midway Road,
Bodmin, Cornwall
PL31 2FQ
Tel: 01208 77989



BODMIN M.O.T. CENTRE at Group Travel

Class 4, 5 and 7. Trade enquiries available upon request. Tel: 01208 77989

2019 COACH EXCURSIONS & TOURS

7 th – 11 th OCT	AUTUMN TOUR TO OXFORDSHIRE	22 nd – 25 th NOV	TURKEY & TINSEL AT SANDOWN, ISLE OF WIGHT
16 th OCT	CLARKS SHOPPING VILLAGE & WELLS *	30 th NOV	BUCKFAST ABBEY CHRISTMAS FOOD & CRAFT FAYRE
25 th OCT	HALLOWEEN SPOOKTACULAR MYSTERY TOUR	7 th DEC	BATH CHRISTMAS MARKET
26 th OCT	DISNEY ON ICE, WESTPOINT, EXETER	15 th DEC	TOUR OF CORNISH CHRISTMAS LIGHTS
2 nd NOV	BRIDGWATER CARNIVAL	21 st DEC	SNOW WHITE @ THE EXETER CORN EXCHANGE
16 th NOV	LONGLEAT FESTIVAL OF LIGHT	7 th JAN 2020	CINDERELLA @ THEATRE ROYAL, PLYMOUTH

* In conjunction with North Hill Good Companions Group

16 TO 70 SEAT COACHES AVAILABLE FOR PRIVATE HIRE, CORPORATE/ VIP, EVENTS & CONFERENCES, WEDDINGS (CAN INCLUDE STAG & HEN PARTY PACKAGE), HOLIDAY TRANSFERS, FUNERALS, DAYS OUT, GROUP TOURS, GOLFING HOLIDAYS & SPORTING EVENTS.

FOR BOOKINGS AND A BROCHURE PLEASE CALL

01208 77989 / 01208 72669

Website: grouptravelcoachhire.com Email: grouptravelcornwall@btconnect.com



BoilerCare Ltd.

South Petherwin and Daws House residents get a 10% service discount.

We carry out services and repairs for oil fired boilers and cookers in the Launceston area.

Our engineers carry spares as standard and aim to fix breakdowns in one visit.

Speak to us on **01566 782 789** for more information, or visit our website at www.esgboilercare.co.uk



Wasps are probably best known for disrupting summer picnics, but they are actually very important in keeping the ecosystem balanced. Without wasps, the world could be overrun with spiders and insects. Each summer, social wasps in the UK capture an estimated 14 million kilograms of insect prey, including caterpillars and greenfly.

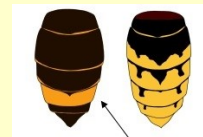
The fearsome-looking hornet may not be a well-loved insect, either, but it is actually just a large wasp, though less aggressive, and also an important pollinator and pest controller.



An illegal immigrant, however, visited Cornwall last year: the Asian Hornet (left). In fact September 9th-15th this year is Asian Hornet week, raising awareness of the predator. Although posing no greater danger to humans than a native bee or wasp, it is a highly effective predator of insects, including honey bees and other beneficial species, and can cause significant losses to bee colonies. There are several key features to look out for which will help you

distinguish between Asian hornets and our native European hornet:

- The Asian hornet is smaller than the European (which is big!)
- The Asian hornet has an almost entirely dark abdomen except for one yellow stripe. European hornets, on the other hand, have a brown and yellow striped abdomen like a wasp.
- Asian hornets have bright yellow tips to their legs whereas the legs of European hornets are dark.
- Asian hornets are only active during the day, unlike our native hornet which is most active at night.



If you think you may have spotted an Asian hornet please either email alrntnonnative@ceh.ac.uk with location details and a photo if possible. But it is important not to disturb an active hornet's nest or a wasp's nest, and please take care not to approach a nest or provoke these insects. *Lavinia Archer*



Photos by Helen Masters

FARMING NEWS



Autumn arrives on the 1st of September and for the farming industry this is the month to finish the cereal harvest and plant the next fodder crops including grass seeds, turnips, kale and rapeseed. The sooner these crops are planted in warm soils the quicker the establishment. This year's harvest was hit by the heavy August rain and while yields were good, the straw lost its golden colour and strength.

The sheep farmers who lamb early - January - will have put the ram in with the ewes.

Of course there is still no clear understanding of what impact Brexit will have on the agricultural industry but perhaps more pressing is the climate debate and the impact this will have, both on the production side and on the landscape. There are numerous experts re-evaluating food production and agriculture but as one farmer stated, "They'd better make sure they still have food in store and on the supermarket shelf or else everyone will get in a panic."

Phil Parsons

Contact your local MP: SCOTT MANN (Con)

Westminster:

House of Commons, London SW1A 0AA

Constituency office of Scott Mann:

10 Market House Arcade, Fore Street,
Bodmin PL31 2JA

Telephone 01208 74337



LOVATON BOARDING CATTERY

Feline Advisory Bureaux Listed Cattery

Daws House, Launceston, PL15 7JF

Home from home holiday for your cats, run by a qualified
Veterinary Nurse; pick up and delivery service available.

Modern purpose built PVC cattery, deluxe heated penthouse chalets

Please ring Andrea for more information on 01566 778501 or email
andrea@lovatoncattery.co.uk or visit www.lovatoncattery.co.uk

Adrian Davey Painting & Decorating

Exterior & Interior Painting, Wallpapering

Home 01566 780477 Mobile 07729500390

FLAT OUT ironing service

tel: 01566 782 070

mobile: 07702 205 339

email: jax@radfordplumbing.co.uk

TAILOR MADE SERVICE

MINOR REPAIRS UNDERTAKEN

COMPETITIVE RATES

DOMESTIC & COMMERCIAL IRONING SERVICE

LOCAL COLLECTION AND DELIVERY AVAILABLE

everything always ironed with care,
guaranteed.

Jackie



**BARN DRY SEASONED HARD WOOD LOGS
FOR SALE**

Full Size (2.6m3) or Half Load (1.3m3)
AVAILABLE

CALL SIMON ON 07971198201



North Cornwall Pest Solutions

Controlling in your area

- Moles
- Rabbits
- Mice & Rats
- Fleas
- Wasps
- Hornets

Fully insured

BPCA Level 2 in Pest Management

07770677029
northcornwallpestsolutions@gmail.co.uk

Prompt, Discreet, Friendly Service

THINK WILDLIFE
PRICED-REIT

David Elcock

PLUMBING & HEATING

Tel: 01566 774249
Mobile: 07977 041905

Trevale,
Daws House,
Launceston,
Cornwall
PL15 7JE



Pre school News

By Rachel Jeffery

We would like to welcome all the new families that have joined the preschool this year. We hope that your children enjoy their time at the preschool with us, exploring all that we have to offer.



We were very busy at the end of the last school year. At our end of year party, we were lucky enough to have a visit from Dartmoor Zoo. The Zoo brought in a snake and Bearded Dragon for the children to see, as well as giant stick insects and a giant African snail to meet and touch. The children liked the Bearded Dragon best as it went for a walk around the preschool, and they were fascinated by its tongue when it ate a piece of fruit.

The children also entered Launceston Show: this year our challenge was to make a puppet theatre. The children had several ideas and created all their own puppets out of various different media. We had cardboard and tape kindly donated to us by Mr Rik Jones, and the children quickly set to painting and making their theatre for the puppets. On the day of the show we were very pleased to find out that we had won second place. The children were excited to see the rosette and certificate they were awarded by the judges. We look forward to finding out what our challenge will be next year.



The Really Useful Page

WHAT	WHEN	WHERE	WHO
Methodist Coffee Morning	10.30am Sat 12th October & Sat 9th November	Methodist Hall	Mary Stoneman 773375
Tea & Toast	Every Thursday during School term 8.30-10am	Sunday school room, Methodist Church	Rev Jo Smart 01566 782921
Prayer meeting	First and third Monday of the month at 4pm	Methodist Church	Tony Stephens 01566 776519
St Paternus Church coffee morning	The first Saturday of each month from 10am	St Paternus Church	D Adams 774244; B Cobbledick 772559
SING!	7-9pm Thursday Restarts October 10th	Village Hall	Sam Davies 07590 371796
BIMBO's (Over 50's keep fit)	Every Monday (except B/Hols and last Monday of the month) 9.30am	Methodist Hall	Vi Brook 779243
Bell ringers	7.30pm Mondays	St Paternus Church	Nigel Parker 773233
Skittles	7pm Tuesdays	Village Hall	Vi Brook 779243
Bingo	Last Wednesday of the month 2pm	Village Hall	Pat Locke 774671
Table tennis	10am Tuesdays	Village Hall	Bill Salt 779950

Launceston Food Bank

Helping Local People in Crisis

Unit 13D
Newport Industrial Estate
Launceston PL15 8EX
info@launceston.foodbank.org.uk
01566 779550

Check website or telephone for opening times

South Petherwin (Wind Turbine) Community Fund

Your Fund – Your Money

For application form contact the Secretary
Pether Northmore
Tel: 778744
Email: peternorthmore1@btinternet.com

Next meeting October 2nd
Applications to be received by October 1st at the latest please

Mobile Post Office
Every Tuesday
12.45-13.45

South Petherwin
Methodist Chapel car park



It is possible that the mobile van that comes to the village on Tuesday lunchtimes will be redeployed elsewhere in the county and replaced by an outreach post office service run by (Gunnislake Post Office) in the village hall for two hours on a Thursday afternoon. At present we are waiting for the kit signal to be tested from there.
We will keep you posted of any developments.

Useful Numbers

Emergencies:

Police Ambulance Fire Brigade Coastguard **999**
Police (Non emergency-general Enquiries) **101**
Email: 101@devonandcornwall.pnn.police.uk
Non-emergency medical calls **111**
Crime stoppers 0800 555111
Environment Agency—Emergency Hotline 0800 807060
South West Water 0344 346 2020
Western Power Distribution - emergency 0800 6783105



Church Services

St Paternus Church (C of E)

Sunday worship at 11.15
(no service on 5th Sunday of the month)

Rev Heather West 770649

Church wardens:
Deborah Adams 774244
Barbara Cobbledick 772559

Methodist Chapel

Sunday Service at 11am

Minister: Rev Jo Smart 782921
Steward: Tony Stephens 776519

South Petherwin Parish Council

The Parish Council meets on the second Wednesday of each month at 7pm in the Village Hall (May-October) & the Methodist Chapel Hall (November-April).
It is open for anyone to come and listen in.

Parish Councillors:

Chairman: Phil Parsons
Michael Screech
Adrian Finnimore
Roger Kneebone
Dawn Rogers
Chris Powlesland
Sue Vernon
Amy Trehane
Rachel Jeffery
Steve Rogers

Clerk: Rebecca Frame

Email: parishcouncil@southpetherwinpc.org

Oil Syndicate

Contact Ann Nicholson
01566 779254

Email agnhexworthy42@gmail.com

Cornwall Council

Tel 0300 1234 100

Website:
www.cornwall.gov.uk

Email: enquiries@cornwall.gov.uk

Cornwall Councillor: Neil Burden
01566 782286 nburden@cornwall.gov.uk



For rubbish, recycling and garden waste collection dates:

Call 0300 1234 100
or go to: www.cornwall.gov.uk

