

South Petherwin Parish Magazine



Issue no 79

May 2017

Community Shop Closing!

By Mike Ryalls

Sadly it's true. The South Petherwin Community shop, located in St Paternus Church, will close its door for the last time at 1pm on Friday 26th May.

A couple of years ago, Ann Brown, our then priest, made a bid for cash from the Diocese to bring the Church more into the Community, as I understand it. She was successful to the tune of about £60,000. She then started to form a Committee to oversee the use of these funds. This is where I first became involved and joined several others who were interested.

Ann had plans for a Community Shop in the Church with a toilet, disability access, kitchen area and a play area. She did her best to find out if the Village wanted this. At least two general meetings were held to ascertain this. There seemed to be good support. So, a small group of us set about building a shop at the back of the Church on Saturdays. I think we did a pretty good job!

Bishop Tim came to open the shop about 18 months ago. By then our committee was well established and we had appointed a Manager. As with all new businesses we expected a slow start. But we had the funds and were very lucky to be able to open a post office in the shop as well. A steady trickle of villagers and some from outside visited our new project .

PTO

Also inside —

Trecrogo's
wallaby

Local Election
Results

The School Ofsted
Inspection

The Great Village
Get together

Update on the
Church Clock

Then Ann Brown was asked to go further South-West to a new Parish. The plans for a toilet had to be shelved due to expense. This was a bit of a blow but the Committee felt we could go on and grow the project.

The nature of the Committee changed a little – some left, others joined. We knew we needed to advertise more. We knew parking was a problem. We knew entrance to the Church and Shop was a problem. We knew some thought this was not the right use of a Church. We knew our hours of opening would not suit all. We knew Tesco's was just down the road. But we still felt that the Village was behind us. They had attended our pre-opening meetings and to all intents and purposes they seemed to support us.

After all an English village has a shop, a church and pub, doesn't it?

As the months went by trade did not improve. Our manager did her best to promote the shop in various ways. Opening hours were changed. People wrote in this magazine about how if you don't use it you'll lose it. Well, we've lost it.

It was with a very heavy heart that at the end of April the Committee decided the shop was not a viable project. It was losing too much money each month. So, the decision was made to close. We're all very sorry for those who used the shop regularly, and for those who volunteered in it. South Petherwin will be the poorer without it.

Important!
Do you have any shares
in the shop?
Then read this!

Will anyone who bought **shares** in the village shop please go into the shop before 26th May and redeem them. After that date, please contact Mike Ryalls, 22 Tiny Meadows, South Petherwin PL15 7JD. The deadline is 31st. August 2017.

Local Elections for Cornwall Council

This May Council elections caused a little confusion for parishioners wishing to vote as the voting venue was relocated to the Village Hall. Any number of parishioners arrived at the Methodist Chapel only to take a second look at their polling card and read, 'Village Hall'.

Neil Burden was elected once more as the Independent Councillor for the Stoke Climsland ward, including South Petherwin, with over 1000 votes and a turn-out of about 40%.

Good-bye to Sue, Shop Manager

By Mike Ryalls

On Friday, 28th April, we said good-bye to Sue Wood-Smith, our shop manager. She took on the role a couple of months before the community shop opened and was instrumental in setting it up. She personally oversaw all the spadework involved in researching items to sell, insurances involved, visiting other community shops and liaising with the Post Office.

When we eventually opened Sue was there with her smiley face and dry humour to make everyone's visit a happy one. Nothing was too much trouble for her. If you wanted anything special ordered, Sue would do it. If you needed anything delivered, Sue arranged it.

What many of you don't know is that Sue worked for many more hours than we paid her. She never complained about this. Papers had to be collected from Launceston before she opened, Post Office forms had to be filled in after she closed. All this and a lot more I don't know about, she did very efficiently. Sue, we will miss you and thank you for your hard work. We wish you all the very best in your next adventure.



Mike presents Sue with a leaving gift from the shop committee

G'day Bruce!

No one could believe their eyes! Was it real? Was it lost? A wallaby was seen recently in the back garden of a house in Trecrogo. Yes really! The news was reported widely locally and nationally. (Yay! Trecrogo made Spotlight!)



No one has any idea where it came from as none are reported missing from local wildlife parks. The RSPCA were called but the bouncer escaped before it could be captured. Good on yer mate, but let's hope you get home soon, safe and sound!



Notes from the Parish Clerk

The town and parish council elections will have been held by the time of going to press, but as there were only seven nominations received for South Petherwin Parish Council, these people are duly elected. They are all current councillors, and are Cllr Parsons, Rogers, Powlesland, Fox, Finnimore, Screech and Kneebone.

Cllr Whiting is leaving the council after many years on it, including a stint as chairman, and the council would like to extend their thanks to him for all his hard work and commitment. Cllr Butler is also finishing her stint as chairman, and has not stood again as a councillor. Thanks go to Cllr Butler for her hard work in the last year. This leaves three positions which will need to be co-opted. If you are interested, look out for notices on the boards and website for further information.

The Annual General Parish Meeting was held in April and as usual it was great to hear from all the different parish organisations and societies—it really is a busy parish with lots on offer for everybody. The draft minutes are on the website, and it's worth taking a quick look at them, as it highlights all the activities of the past year and things to come too.

This is my last report as clerk, as I finish on May 19th. I have had a varied and enjoyable two years and I would like to thank all the councillors and parishioners who I have come across during my role. You can still email the council, and you will hear in due course who the new clerk is and how to contact them directly.

Alison Barham

Email; parishcouncil@southpetherwinpc.org

Councillor Julie Butler writes;-

As Alison says, I have decided to step down as a councillor due to personal commitments. I have enjoyed my time as a councillor and Chair in the last year, and I look forward to hearing what the council gets up to in the future.

As retiring Chairman of the Parish Council I would like to say how sorry we are to be losing Alison as our parish clerk. Alison has been the clerk for over two years and has carried out all duties with great care and diligence, she will be missed.

On a personal note I cannot thank Alison enough for all her help in my year as chairman. It would have been a much harder year without her, she has helped me in every way with a cheerful smile. Thank you Alison.

Don't the residents of South Petherwin care?

The people of South Petherwin must be the most content residents in Britain. They seem to have no complaints, comments or questions for the parish or county councils about pot holes, traffic, wind turbines or rubbish, nor anything to say about the various clubs, organisations and community ventures in the parish.

South Petherwin is a large parish of around a thousand souls yet hardly any of them attended the recent Annual General Parish Meeting on 19th April. Our parish councillors must be happy too, since only half of them were there. Those who did attend the meeting were all members of village groups, who gave their annual report to each other and our county councillor, Neil Burden.

Shame on you South Petherwin! Do you really have nothing to say about how the parish is run? Don't you care? Please try to come to next April's parish meeting in the village hall and keep me company.

Lavinia Archer

The Classic Bike and Car Rally

The Classic bike and car rally tour took place in April, once again following the old Petherwin Hill road. Classic cars and bikes owners navigated their way up the old road, slipping and sliding on the way. The owner of the Triumph motorcycle, in the photo said, "I love my old Triumph, it's got me up that hill of yours!".



Caroline Harris MIAB
Bookkeeping Services

www.cmhbookkeeping.co.uk

- Bookkeeping
- Accounts preparation
- VAT
- Self-assessment
- Secretarial services
- Many years office and business experience

Tel: 01566 783502

Mob: 07866 953708

E-mail: cmhbookkeeping@btinternet.com

The Old Chapel, Portgate Hill, Lewdown, Okehampton, EX20 4PX



H. R. JASPER AND SON LTD
WHOLESALE BUTCHERS

BOTATHAN ABATTOIR
SOUTH PETHERWIN
LAUNCESTON
CORNWALL PL15 7JL

Tel: 01566 772843 (3 lines) Fax: 01566 776648

CJC Services

Based in South Petherwin

Tree Care — Felling — Seasoned Logs

Stone Walling — Fencing — Vermin Control

Woodland & Garden Maintenance

Tel 07968998425



Specialist manufacturer of top quality sheds, stables, summer houses, garages, gates and fencing at sensible prices, made to your requirements

Lower Landlake, Launceston,
Cornwall PL15 9LU.
Tel-01566 774791

www.landlakesawmills.com . Email- landlakesawmills@outlook.com

Foxies

PROFESSIONAL DOG GROOMING

- ✿ Friendly service, helpful groomer
- ✿ Hydrobath
- ✿ Scissoring / Clipping
- ✿ Parking point outside
- ✿ Collection & Delivery Service Available
FREE TO LAUNCESTON AND SURROUNDING AREA
- ✿ City & Guilds Qualified



South Petherwin, Launceston - Telephone: 01566 777655



**Eden Project's Big Lunch
and The Great Get together
in memory of Jo Cox MP.**



**Sunday June 18th
Village Hall
12 midday**



Don't forget **Sunday June 18th from 12.00 midday** is a chance for a bit of a village knees up. Simply bring food and drink to share to the village Hall. If it's sunny, which it will be I'm sure, we can set up outside, with maybe a little bit of music too.

This is in response to the Eden Project's Big Lunch and The Great Get together in memory of Jo Cox MP. Remember this great idea started in Cornwall, so come and be a part of it. Check out the websites for the Big Lunch or Great Get Together if you're curious, otherwise just turn up with a plate of food and meet that neighbour you've always wondered about or haven't even met yet...

If you fancy playing the musical instrument, that spends far too much time leaning against the wall then bring that along too



CASTLE VETERINARY GROUP LIMITED

Pennygillam Way, Launceston, PL15 7ED

Telephone: Farm 01566 772371; Pets 01566 772211

Website: www.castleveterinarygroup.co.uk



Monday - Friday 8.30am - 6.30pm & Saturday 8.30am - 3.00pm

24 hour emergency service provided by our own friendly vets

Did you know? Castle Vets have been caring for pets and farm animals in Launceston and the surrounding area for over 130 years!



R Mears & Sons **Chimney Sweeps & Stove Installation**

Established over 30 years

Vac Brush. Full CCTV investigations.

Pots, Cowlings & Bird Protection fitted. Chimneys Lined.

Solid Fuel Appliances, Rayburns, Woodburners,

Stoves, etc serviced. Fully Insured.

Tel: 01840 261221 Tavistock: 01822 664554

Mob: 07737 533392

www.sweepdevon.com



IMPORTANT DEFIBRILLATOR NEWS

There were only a few people at the recent meeting to explain the VETS scheme to the village, so I will endeavour to explain it here, as it affects everybody who may need to have access to the defibrillator & it is important that everyone understands the system. The committee plan to set up a **Voluntary Emergency Telephone System (VETS)**, which can assist anyone who finds themselves needing the defibrillator but are unable to go & fetch it because they are alone with the patient & performing CPR, or have no transport.

Ten households will volunteer their 'reader display' telephone numbers to the scheme & will be prepared to accept an emergency summons to jump in the car & deliver the machine to where it is needed. The charity, Community Heartbeat Trust, from whom we purchased the defibrillator, will set up the telephone system for us, at a cost of £100. Every household in the village will be given a fridge magnet, showing the dedicated telephone number for **VETS**, which should be kept near your 'phone. After calling 999, whilst doing CPR you can quickly call the dedicated number, (putting the phone on loudspeaker if possible so that you can continue compressions)) and ask whoever answers to fetch the machine – in your inevitable panic, don't forget to tell them your address!! When the number is dialled, it will ring out & be displayed simultaneously on all 10 volunteers' phones. The first person to accept the call will cancel out all the other 'phones.



It is perfectly possible, and indeed to be hoped, that the ambulance will arrive before the defibrillator; however this will not always happen and it is far better to have both options available. Remember – **YOU DO NOT HAVE TO BE TRAINED** in the use of the machine because it has a picture screen & speaks instructions to you. **IT WILL NOT SHOCK** a person who does not need shocking. You cannot harm the patient – and nothing is worse for them than being dead!!!! Nor can you be sued for attempting to save a life.

We would like to have another '**defibrillator demonstration**' evening to further familiarise people with it and give them more confidence to use it. If you would want to attend such a meeting, will you **please contact Sue 772640 or Phil 773125** so that we can ensure that we have sufficient people to make such an evening worthwhile, as SPED have to pay a fee for it. We look forward to hearing from everyone.

Sue Vernon

CHURCH CLOCK UPDATE

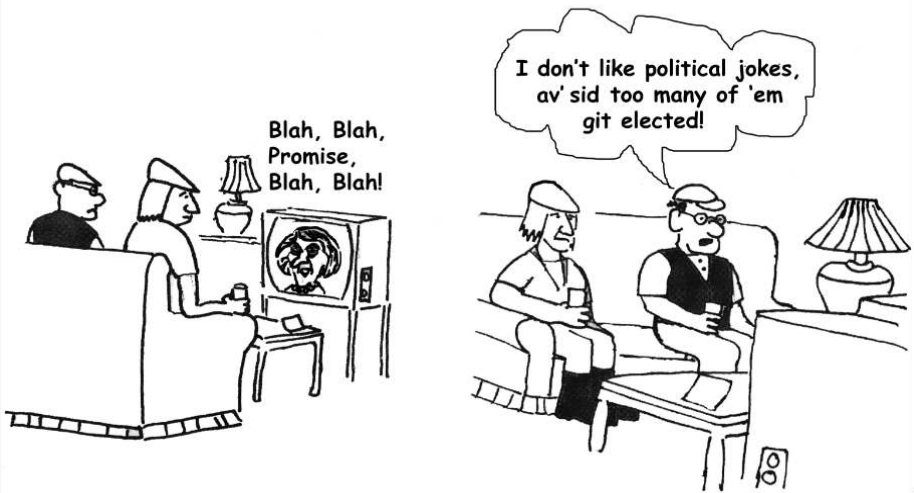
By now it had been hoped that the Church clock would be back in the village with the two regilded and repainted clock faces. Many of you will have noticed that whilst one of the faces has been re-installed, there is still an ominous gap on the eastern side of the church tower. Why ?

When the senior clock technician inspected the work that had been undertaken on the Eastern Dial he was not completely satisfied that the 'end result' was up to his expectation so in order to ensure 'up to at least another generation of trouble free timekeeping' then further work at the Clockmaker's own expense was necessary. The installation would have to wait until his exacting standards were achieved.

Far better wait a little longer before full operation resumes than to find out in a few years that there was another and more serious problem to be tackled with more expenditure. By the time (yet another dreadful pun !) the next Parish Magazine goes to print, the clock will be as before – keeping correct time, seen by all passing through or residing in the village, and chiming the hours and the 'quarters' as it has since 1911.

Nigel Parker

Pader Wynn by Roger Pyke



Radford Plumbing

Kitchen & Bathroom Fitting

Kitchens, Bathrooms, Wet Rooms

General Plumbing, Tiling Electrical Work,

Flooring Carpentry, Plastering



- Free Quotes
- All work to high standards and guaranteed
- We manage your project from start to finish

Guy Radford

01566 782 070 / 07825 611 580

guy@radfordplumbing.co.uk

www.radfordplumbing.co.uk

Wood View, North Hill, Launceston, PL15 7PQ

Parnalls
SOLICITORS ESTABLISHED 1780

Giving you
peace of
mind



As we age Wills, Trusts, Power of Attorney, Inheritance Tax Planning and Deputyship Applications become pressing matters. **At Parnalls we'll help you get it right.**

Contact us on **01566 772375** or by email
Deborah Adams adamdsd@parnalls.com
Jonathan Pounder pounderj@parnalls.com

Parnalls . 15-19 Westgate Street
Launceston . Cornwall . PL15 7AB
T. 01566-772375 W parnalls.com



**Andrew
Hosking**

Springfield
Tregaller Lane, Daws House
Launceston, Cornwall
PL15 7JH
Tel 01566 772537/
775818

Designer & Maker of
Quality Furniture & Joinery



The first step for bright young things.

Our experienced staff develop *“warm and caring relationships with the children that foster a general sense of trust and well-being”* and *“help to promote the development of early communication skills and a positive attitude to learning.”* Ofsted

Monday, Tuesday, Wednesday & Thursday : 9am – 3pm

Friday : 9am – 1pm Lunch Club: 12 – 1pm

£10.50 half day / £21 full day

We now have places for funded two year olds.

For more information call Rachel on 01566 779476

Charity Number: 1024955

Mobile Foot Care

Sally Isaac S.A.C. Dip. FHPT/FHPP

**Gentle and professional
foot care in the comfort
of your own home**

*If you suffer discomfort from
corns, callus, ingrown toenails,
cracked heels, thickened nails
etc. or just have difficulty cutting
your toenails give me a ring*



Telephone Sally on 07961 076 168



HINE

LANDSCAPING & GARDENING

At Hine landscape gardening,
we have available a team of expertise.
We can help you realise the potential
of whatever outdoor project
you have in mind large or small.

Maintenance - Lawns - Trees - Clearance - Stonewalling

07967 387748

www.hinegardening.co.uk
[e:hinelandscaping@yahoo.com](mailto:hinelandscaping@yahoo.com)

Trecrogo Chapel House, South Pethewin, Launceston

The Really Useful Page

<u>WHAT</u>	<u>WHEN</u>	<u>WHERE</u>	<u>WHO</u>
Lunch Club	Mon 26th June Mon 31st July	Methodist Hall 12.30	Wendy Smith 782204
Coffee morning	Sat 10th June Sat 8th July	Methodist Hall 10.30am	Tony Smith 782204
Knitting	Most Thursdays at 2pm	West Petherwin Farm	Muriel Parsons 773027
BIMBO's (over 50's keep fit)	Every Monday (except B/hols and lunch club dates)	at the "Winds of Change" during Methodist Hall building work.	Vi Brook 779243
Bell ringers	7.30 pm Mondays	St Paternus Church	Nigel Parker 773233
Skittles	7pm Tuesdays	Village Hall	Peter Northmore 778744 Vi Brook 779243
Bingo	Last Wednesday of the month 2pm	Village Hall	Pat Locke 774671
Table Tennis	10am Tuesday mornings	Village Hall	Sue Vernon 772640 Tony Bawn (U3A) 784665
S. Petherwin Cricket Team	Weekly practice and fixtures	S. Petherwin Cricket ground	07810 493583 07973 909556

Local Member of Parliament

SCOTT MANN (con)

Contact details;

Westminster
Scott Mann MP
House of Commons
London
SW1A 0AA

Constituency
Office of Scott Mann MP
10 Market House Arcade
Fore Street
Bodmin PL31 2JA

Telephone 01208 74337

Cornwall Council

Tel 0300 1234 100

Website;
www.cornwall.gov.uk

Email ; enquiries@cornwall.gov.uk

Cornwall Councillor: Neil Burden
01566 782286 nburden@cornwall.gov.uk



Rubbish and Recycling Collection Dates

Both rubbish and recycling are collected on a **WEDNESDAY**.

Rubbish is collected every Wednesday.

Recycling on alternate weeks.
Next recycling dates are 24th May
7th and 21st June , 5th July

For more information go to-
www.cornwall.gov.uk

Oil Syndicate

Contact Ann Nicholson

01566 779254

Email agnhexworthy42@gmail.com

Church Services

St Paternus Church (C of E)

Sunday worship at 11.15
(no service on 5th Sunday of the month)

Rev Heather West 770649

Church wardens ;
Deborah Adams 774244
Barbara Cobbledick 772559

Methodist Chapel

Sunday Service at 11am

Minister; Rev Jo Smart 782921
Steward; Tony Smith 782204

South Petherwin Wind Turbine Community Fund

Your Fund– Your Money

**For application form contact
the secretary -
peternorthmore1@btinternet.com
tel—778744**

**Next trustees meeting
Monday 17th July 2017**

Useful Information

The Little Red Bus (Launceston Community Transport Partnership) covers South Petherwin area on Thursdays. For information, ring 777960

Village Hall: To hire hall, contact Sue Vernon **772640**

Methodist Hall To hire hall, contact Wendy Smith **782204**

Useful Numbers

Emergencies:

Police Ambulance Fire Brigade Coastguard 999

Police (Non emergency-general Enquiries) 101

Email;
101@devonandcornwall.pnn.police.uk

Environment Agency—Emergency Hotline 0800 807060

South West Water 0344 346 2020

Western Power Distribution - emergency 0800 6783105

Crime stoppers 0800 555111

South Petherwin Parish Council

The Parish Council meets on the second Wednesday each month at 7.30 pm in the Village Hall. It is open for anyone to come and listen in.

Parish Councillors are:

Chairman: To be elected

Clerk: To be appointed

email;

parishcouncil@southpetherwinpc.org

Councillors:

Michael Screech, Adrian Finnimore, Roger Kneebone, Dawn Rogers, Phil Parsons, Phil Fox and Chris Powlesland



The Trailer Centre,
Nr. Launceston 01566 782794

www.prjengineering.co.uk

4 miles from Launceston on B3254
Email: sales@prjengineering.co.uk
Postcode: PL15 7QH

MAIN DISTRIBUTOR FOR

'BRITAINS LEADING
TRAILER
MANUFACTURER'



COVERING CORNWALL AND DEVON

Opening
Times:
Mon - Fri
8:30 - 1, 1:30 - 5
Saturday
9 - 12



WIDE RANGE OF TRAILERS
AVAILABLE FOR HIRE FROM £40 A DAY

EXTENSIVE RANGE OF SPARES IN STOCK
COVERING MOST MAKES OF TRAILER



SALES * HIRE
SERVICE * REPAIRS



FULLY EQUIPPED WORKSHOP
FACILITIES FOR SERVICE AND REPAIRS

LARGE SELECTION OF CHILDRENS
FARMING TOYS INC. BRUDER & ROLLY TOYS

GEORGE BATEMAN

Property Maintenance Small Building Work,

Interior & Exterior Decorating, etc.

No Job too Small

Tel: 01566 773752

*Your Local Unisex
Hair Salon*

*Newton Farm
Lewannick
Launceston
PL15 7QH*



Free parking & competitive prices

*Call Steph on 07506741243 or email
steph_cornelius@hotmail.co.uk to book an appointment*

Melanie Young

Local Chimney Sweep and Vac

Master sweep trained

Fully insured

Tel: 01566 889006
Mobile: 07773 333718
swws@hotmail.co.uk

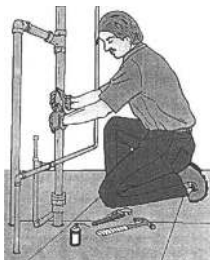


David Elcock

PLUMBING & HEATING

Tel: 01566 774249
Mobile: 07977 041905

Trevale,
Daws House,
Launceston,
Cornwall
PL15 7JE



Our experienced dedicated equine Vets now provide a weekly half price visit on Mondays in the Launceston area. We offer a comprehensive, affordable service for all horses, big or small, from stud work to routine vaccinations.

Our fully mobile digital X-ray units, scanners and dental tools allow us to bring modern Veterinary skills to your

Phone 01579 382663

Follow us on Facebook for the latest offers and news

facebook



CHRIS LYLE
PLASTERING & PROPERTY
MAINTENANCE

Office hours 9am – 5pm: 01579 382135

W: www.chrislyleplastering.co.uk E: info@chrislyleplastering.co.uk

PLASTERING WORKS

Lime Plastering

Lime pointing

Plastering over Artex

Plaster boarding

External rendering

Chimney rendering/re-pointing

Rooms re plastered

Damp proof plastering

Tyroleaning

Insurance quotes

MAINTENANCE WORKS

Interior/exterior Painting

Damp Proofing

Wall/floor tiles

Concrete Paths

Patio slab works

Laminate flooring

External wall slate/tile hanging

Internal insulation for solid walls

Shed / Summerhouse construction

Coving

30 Years experience – Free quotations - Recommendations available

Member of the Guild of Builder and Contractors

City & Guilds Qualified - Local Tradesmen

**Unit 4, Callington Business Park, Tanners Way, Moss Side Ind Est,
Callington, Cornwall, PL17 7SH**

James Williams Carpentry

- Bespoke Storage Solutions, Decking
- Window & Door Replacement & Repairs
- Kitchen & Bathroom Supply and Fitting
- Doors
- Plastering
- Flooring
- Tiling



We take pride in our excellent reputation

to

please our customers through hard work, precise workmanship and good housekeeping.

Please view our website

www.jameswilliamscarpentry.co.uk

T: 01566 248308

M: 074113 77720



Oil, Gas & LPG



Boiler Servicing & Repair



Plumbing & Heating

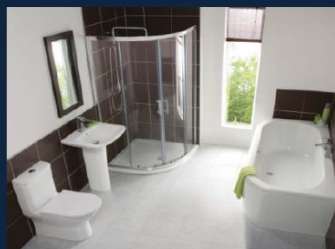
Over 35 Years Experience

Tel: Launceston 880 123

**COME VISIT OUR
BATHROOM SHOWROOM
AT
KENNARDS HOUSE**

(We are opposite Trethorne Leisure Park)

www.dowsons-online.co.uk



SILAGE SEASON

For the dairy farmers the silage season follows shortly after the cows have been let out to graze the spring grass as their winter supply of silage stored indoors comes to an end.



First cut silage this year started late April for some dairy farmers in the parish but the majority will be done in May. The low roar of a 400hp forager gobbling up the rows of grass will be heard across the parish. Then the roar of the 150+hp tractor pulling it's trailer filled to the brim with grass coursing its way along the country lanes to the silage clamp. Finally the steady roar of the 150+hp tractor pushing the trailer tipped silage back in to the clamp and rolling it down ready to be eaten this coming winter. Not so many years ago a fifty acre cut of silage could have taken a week or more to complete but today it's done in a matter of hours. For the dairy farmer it is vital to harvest the crop quickly to preserve its nutritional value and prevent it from getting either too wet or too dry depending on the unpredictable weather.



A GOOD SAMARITAN On the road to South Petherwin.

Sally Shepherd lives in Tregadillett but attends St Pater-nus church, South Petherwin. On Easter Saturday morn-ing, she was on her way to arrange flowers in the church when her car developed a puncture. She was just outside the village on the road from Kennards House.

Feeling worried, and wondering what to do, she stood looking at the flat tyre when a good Samaritan stopped his car and offered help. Despite the chilly weather, he got down on his knees and changed Sally's tyre. She says it wasn't easy as the nuts on the wheel were damp and cold but the good Samaritan did it all without any fuss.

But who was he? Sally says he reluctantly gave his name as Bob Wills but she doesn't know where he lives so can't thank him properly. Hopefully he might see this article as Sally says she will never forget his help and kindness on Easter Satur-day and feels we are so lucky to live in an area where perfect strangers are still will-ing to stop and help a neighbour in trouble.

Methodist Chapel News

Following the important information detailed in the last issue, due to unforeseen circumstances the building work has been put on hold. Normal access to the churchyard will continue until further notice. Thank you for bearing with us.

LENT LUNCH

This was held on Friday 7th April when homemade soup and rolls and cheese and biscuits were served. As a result, a donation of £68 was sent to Christian Aid.

PRAYER MEETINGS

These continue to be held in chapel on the 1st and 3rd Mondays 6.30pm to 7.00pm led by Rev Jo Smart. All are welcome as we pray together to discern God's will for the chapel and the community in which we have been placed.

COFFEE MORNINGS & LUNCH CLUB

These continue on a monthly basis with the coffee mornings being held on the 2nd Saturday of each month and the lunch club normally being held on the last Monday of the month, unless there is a bank holiday. All dates are printed in the magazine (page 32). Donations from the coffee mornings continue to be given to the Launceston food bank at present. The lunch club continues to be well attended but there are a few spaces available, for details please contact Wendy Smith on 01566 782204.

We have lost a very valued and longstanding member of our chapel in the passing of Mr Owen Goodman on 7th March. He was a very active member of the chapel and will be sorely missed. Our thoughts are with all the family.

Mary Stoneman

Sadly We Say Goodbye To -;

Owen Goodman. He came to live at Brockle farm with his parents in 1939, where he continued to farm until his retirement in 1994. He then moved to Trelinnoe Close where he and Una worked hard creating a wonderful garden of flowers and vegetables. He enjoyed his regular walks around the village and lanes and was always ready for a chat and could be often found tidying the chapel churchyard. Owen always took a keen interest in village events and will be remembered with great affection by all those that knew him.



Bob Buckledee. South Petherwin Skittles Club was sad to hear that Bob had died a few weeks ago. Although living in Egloskerry, Bob and his wife Kay, were well known and active in South Petherwin for several years. He was one of the initiators of the skittles club in 1989 and continued to play an active role until about three years ago. Our condolences to his family.



Group Travel



Enterprise Park, Midway Road, Bodmin, Cornwall. PL31 2FQ

☎ +44 (0) 1208 77989

W grouptravelcoachhire.co.uk f [grouptravelcwl](https://www.facebook.com/grouptravelcwl) t [@grouptravelcwl](https://twitter.com/grouptravelcwl)

2016/17 Excursions

29 May– 2 June	Eastbourne (5days 4 nights)
15 June	River Dart cruise and steam train
8 July	Barbury Horse Trials
25 July	Mystery Tour
8 August	Paignton Zoo
9 August	British Fireworks Championships
18 August	Rosemoor Garden Show

Contact Group Travel (details below) for details of future trips

**16 - 70 SEAT COACHES FOR PRIVATE HIRE, CORPORATE WORK & WEDDINGS,
(CAN INCLUDE HEN AND STAG PARTY PACKAGE) AIRPORT BUS TRANSFERS**

FOR BOOKINGS AND BROCHURE PLEASE CALL 01208 77989 / 01208 72669
or Website: www.grouptravelcoachhire.com Email: benneymoon@btinternet.com



Boilercare Ltd.

**South Petherwin and Daws House residents get
a 10% service discount.**

We carry out services and repairs for oil fired
boilers and cookers in the Launceston area.

Our engineers carry spares as standard and aim
to fix breakdowns in one visit.

Speak to us on **01566 782 789** for more information,
or visit our website at www.esgboilercare.co.uk





Jonathan Blake

Money Management

Jonathan Blake lives in South Petherwin and offers personal service and access to uncomplicated independent financial advice.

Jonathan Blake Money Management Limited
Unit 1, Holwood Business Centre Blunts, SALTASH
Cornwall PL12 5DW

Tel: 01752 851748 Mobile: 07970 011651

E-mail: info@jbmml.co.uk
www.jonathanblakemoney.co.uk

Jonathan Blake Money Management Limited is authorised and regulated by the Financial Conduct Authority.

Ruby's Garage



Car, 4x4 & Light Commercial

Sales, Service & Spares

Your local family owned independent garage for over 40 years
Specialising in advanced vehicle technology

- Servicing and MOT facilities
- Workshop equipped with latest all makes Diagnostic Equipment
- Competitive prices on Tyres, Batteries and Clutches
- Specialist in 4x4's with wide range of spares currently in stock
- Suppliers of new and used Cars, 4x4's and Light Commercials
- Full bodyshop facilities including insurance work carried out
- Air Conditioning checks and servicing carried out

For more information or advice, contact us by the following:

TEL: 01566 782402/782536 FAX: 01566 782741

e-mail: brubys@aol.com or visit us at www.rubysgarage.co.uk



School News

By Helen Masters



A letter from Theresa Mills, headteacher-

I am pleased to let you know that our Ofsted report is now published. Huge thanks to everyone who contributed to such a successful outcome. I am particularly pleased that comments from the pupils are woven throughout the report. The inspector really captured what makes South Petherwin School special as children are at the heart of everything we do and the fact that they had a very clear voice in the inspection is a testament to this. Here is a little snapshot of the findings:

"Current pupils' achievement across the school is good because the headteacher has a clear understanding of what good learning looks like. Pupils say that teachers ask questions that help them to understand how to do things. One pupil said, 'They don't just tell you how to do things', showing they enjoy discovering answers for themselves. Pupils engage well with their learning because they find work interesting and stimulating. As a result, their behaviour is good. They follow instructions carefully, pay avid attention to the teacher and work very well with each other." Ofsted, 18th April 2017

News of our successful Ofsted must have got out as we currently have 108 children on roll and are already full for 2017/2018. We are therefore looking forward to our extension work which will start in the Summer Holidays. This will involve enlarging our two infant classes and the hall. Even though we will have more space, we don't intend increasing the numbers on roll as we want South Petherwin School to remain as a true 'village school'. These improvements are merely to make the learning environment the best it can possibly be for the children in our care.

Thanks again to everyone for all your support and congratulations to the whole of the South Petherwin School Community.

Upcoming events:

- 22nd May** Sports Day.
Class 4 residential to Camp Kernow,
Class 3 Multi Sports Festival, Class 1 visit to the woods
- 17th June** Summer Fayre All Welcome

HOLY WELL IN SOUTH PETHERWIN

Earlier this year I was lucky enough to be allowed onto private land in South Petherwin, with friend Helen Fox, to visit the site of a holy well and spring. Helen has been researching Cornish Holy Wells for several years and visited over 200 of them, and has so far published two volumes with photographs and descriptions, as well as a set of oracle cards with meditations.

We knew of the spring and I had read on the Launceston Now and Then site, that in the past, water from this well had been used in the parish church for christenings. Helen spotted what was clearly the outline and stones of a well house in the bank about 75yds above the spring. In the days when the fields between there and the road were in single ownership there could have been a path going straight across from the well house to the still existing farm lane by the old horse trough. The spring itself is in a delightful and sizeable enclosure, with the remains of a low slate wall and very old native trees, including oak, hawthorn, holly and alder. We felt a powerful and lovely atmosphere in the place, and that there may have been important gatherings here in the past. The spring can be seen gently bubbling up into a small pool, and graced by an elegant tree above it.



It is likely that the water would have been pumped up to the well house (the field is on quite a steep slope) to be collected when needed. It is not known why there is no saint dedicated to this well. However the saint most likely to be connected with it is St Paternus, to whom the parish church is dedicated, as also is North Petherwin's church, and the holy well there. St Paternus was also known as St Pattern or St Padern and two stories are linked to him – (1) He was a local chieftan who had a son St Constantine, who gave up his throne to become a monk. – (2) He was a Welsh abbot who went to Brittany to set up the monastery at Vannes.

Our thanks to Julian and Barbara Cobbledick for kindly making this memorable visit possible. For further information about Cornwall's Holy Wells and Helen's books she can be contacted at helenfox761@btinternet.com or on 01579 342636.

Jan Russell

BRIGHT MARGINS

- A WRITER'S JOURNEY

By Cherry Pyke



About two years ago, with the inspiration from friends and technical creativity of my husband, I decided to develop a new way of sharing my love of writing with a wider audience. As people seem to enjoy my articles, journals and musings and they bring a smile or a chuckle, it was time to start a blog. Naturally, when a writer's ideas evolve and flourish, so reality squashes them with a huge boot and computer software chews them up with gleeful complication; but eventually, optimism soars over the grimace of adversity and the **www.brightmargins.com** website was launched in April.

Embracing social media, whilst providing a friendly website for readers who prefer not to be so interactive, Bright Margins includes a live blog feed from Facebook.



All my latest articles, photographs, observations, reviews and journeys are viewable from the home page. Simply click on the Facebook link to like, share or comment on these posts. I'm also on Twitter @BrightMargins if you prefer brief snippets or have less time to read. Unless I go travelling, most of my writing is based

around the local area and my quirky view of the world, so there are plenty of recognisable viewpoints.

Excitingly, I'll also be offering writing services with special offers on bespoke wedding journals and poems. If you're lost for words when needing to prepare a speech, important letter or have a new business/event to review, then Bright Margins is here for you too. More information available on **www.brightmargins.com**.

Enormous credit and appreciation must go to Roger Pyke who has gradually designed this website over two years, whilst enduring chronic ME disabilities and maintaining both the Parish website, **www.southpetherwin.com** and **www.launcestonthen.co.uk** for the town, with tremendous dedication and humour. As a new adventure, this feels giddily enthralling, so I'd love to share it with you. Have a look, sit back and relish the chance to enjoy some unique words for sparkling memories.



LOVATON BOARDING CATTERY

Feline Advisory Bureaux Listed Cattery

Daws House, Launceston, PL15 7JF

Home from home holiday for your cats, run by a qualified
Veterinary Nurse; pick up and delivery service available.

Modern purpose built PVC cattery, deluxe heated penthouse chalets

*Please ring Andrea for more information on 01566 778501 or email
andrea@lovatoncattery.co.uk or visit www.lovatoncattery.co.uk*

Adrian Davey Painting & Decorating

Exterior & Interior Painting, Wallpapering

Home 01566 780477 Mobile 07729500390

Nic Parker

Mobile | Hairdresser



07816183125



01566 772393



36 Trelinnoe Gardens, South Petherwin,
Launceston, PL15 7TH

• Fully Qualified With Over 20 Years Experience •



Fully Insured Lady Gardener
RHS Level 2 Certified

**Do you need extra help to keep
your garden just the way
you like it?**

Whether it's regular appointments or a
particular garden project, I offer:
Planting and care of beds, border &
Containers, design and re-design
ideas, weeding, digging and general tidying,
pruning and cutting down, lawn and hedge
cutting

07968 170130



WALLING | LANDSCAPING | CONSTRUCTION

07968 996 191

www.dbwalling.co.uk



**Cornish Stone
Wall Specialists**

Neighbourhood Watch

A Neighbourhood Watch Scheme enables communities to work together with the police and limit the opportunity for crime and anti social behaviour through increased awareness of crime prevention measures. For more information contact **Mary Stoneman on 773375** or any of the coordinators below;

The Village

Helen Masters 775545

Tiny Meadows

Richard Beacham 773614

Tregaller Lane & Tremeale

Mary Stoneman 773375 and

Crispin Earle 774038

Daws House

Andrea Foster 779181

School Watch

Gillian Sleep 773300

Parish Website

The website address is
southpetherwin.com

Roger's email is
rogerpyke1@gmail.com

Advertising in this Magazine

Advertising rates for a whole year are £35 for a quarter page, (landscape or portrait) or £70 for half a page.

contact ; Alison on 01566 772596
or email **alisonbarham21@gmail.com**

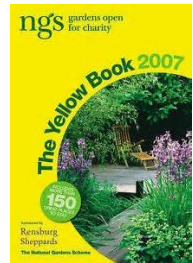
Gardening Matters

Yet again our gardens have succumbed to the changing weather. Warm days and cold nights followed by a harsh air frost at the end of April has affected the fresh new growth and flowers on many shrubs and trees. English wine makers warn that at least 50% of their 2017 grape harvest has been wiped out.

Jobs in May

- Until warmer nights from the end of May, don't be tempted to put out bedding plants and tender vegetable crops too soon.
- Watch out for slugs and snails, especially on new leafy growth and plants such as Hostas, Delphiniums, Echinacea and Sunflowers.
- Put plant supports in place for tall growing perennials.
- Dahlia tubers that have been lifted over winter can be replanted in fresh compost to encourage new shoots.
- In dry spells, ensure that container grown plants and anything recently planted is watered regularly.
- Keep on top of weeding.

May 27th/28th/29th marks the 90th anniversary of the National Garden Scheme (NGS) yellow book of gardens open for charity. Many lovely gardens are open to visit over the weekend.



Garden anagrams

1. God sore (2 words) 2. Stare 3. Lamp 4. Sacred 5. Players 6. Weeds 7. Occurs 8. Drainage

samnella@talktalk.net Ella Payne



International Dark Sky Park

By Lavinia Archer



When did you last see a shooting star or the milky way? Have you ever watched the space station slowly gliding across the sky? I really appreciate being able to look up from my garden on a clear night and see stars. When I look West towards Bodmin Moor I can see the constellations and planets. But to the East, towards Pennygillam and Launceston, all I see is a pale orange glow.

My view of the night sky is compromised by light pollution from bright security lights directed outwards so light spills up as well as down. Light travels well and is a form of pollution when used without thought. It is also an added expense to the owner, given the price of electricity. I understand that crime is not prevented by bright lights; in fact crime rates actually fall during power cuts. After all, theft or vandalism is easy to commit when you can see your target and your exit route. ?

Cornwall Council has made a bid to the International Dark Sky Association to have Bodmin Moor recognised as an International Dark Sky Park. Currently there are only three Dark Sky Parks in the UK . The designation will protect the amazing quality of the sky at night over Bodmin Moor. Recent light readings show the quality of its night sky is amongst the best in the world, and may be a candidate for a “Gold” standard Dark Sky Park. As well as helping to protect the night sky from light pollution, it will provide a focus for learning about the stars and solar systems. Darkness is good for our health; our body clocks haven’t evolved for artificial lighting and research has shown neither has wildlife; on land air or sea. A Dark Sky designation can be used to promote local tourism. Elsewhere there have been tangible benefits from this. Most people love a starry sky – lots of people study it closely, many more of us just enjoy gazing at it.

Our parish edges the moor, and part of it lies within the designated zone. We need to manage lighting better and make sure it does what it needs to, without harming the night sky. We need to be able to see what we’re doing and feel safe as we go about our business but we should consider sky friendly lighting when fitting new lights or replacing old.

If you’re interested, take a look at www.britastro.org/dark-skies/index.php I’m frustrated by light pollution. Do you have an outside light you could switch off?

Noticeboard

**Jack Henry
Thomas**

**Born
April 15 2017**

**Congratulations to
Luke and Naomi Thomas**



CLEANER AVAILABLE

**One off or regular cleaning.
Based in South Petherwin**

**Ring Kathryn on
772608**



Notice from St Paternus Church

**Please note that although the shop is sadly
closing, the Church remains open and
services will continue as usual**

**There will also be a coffee morning on the first
Saturday of every month from 10-12.**

**For further information contact Rev Heather
West or the church wardens Deborah Adams
and Barbara Cobbledick (tel nos on page 15)**

Congratulations

to

Katy Northmore and Sean Bailey

who were married

on 10th April 2017



Parish Events

Friday May 26th	Shop closure	Shop
30th May-2nd June	Half term	School
Saturday 3rd June	10-12 Coffee morning	St Paternus Church
Saturday 10th June	10.30 Coffee morning	Methodist Hall
Saturday 17th June	School summer fayre	School
Sunday 18th June	12.00 Big Lunch and Get Together	Village Hall
Monday 26th June	12.30 Lunch club	Methodist Hall
Saturday 8th July	10.30 Coffee morning	Methodist Hall
Monday 31st July	12.30 Lunch Club	Methodist Hall



**Your local paper
published
every Thursday**

**Tindle House
Westgate Street
Launceston
01566 772424**

**Also available on-line
www.launceston-today.co.uk**

Parish Magazine Committee

Editor-Helena Northmore 778744
hmnorthmore@msn.com

Advertising-Alison Barham 777561
alisonbarham21@gmail.com

Treasurer -Helen Masters 775545

Secretary—Sue Vernon 772640

Phil Parsons 777179,

Cherry Pyke 776998,

Phil Fox 773125

Copy for the next issue of the Magazine should be given to a member of the editorial committee not later than **5th July 2017**